

BDNF Antibody
Catalog # ASM10558**Specification**

BDNF Antibody - Product Information

Application	ICC/IF, WB
Primary Accession	P23560
Other Accession	NP_001137277.1
Host	Rabbit
Reactivity	Human
Clonality	Polyclonal
Description	
Rabbit Anti-Human BDNF Polyclonal	

Target/Specificity

Predicted molecular weight at ~27.9kDa.

Other Names

Abrineurin Antibody, ANON2 Antibody, BDNF_Human Antibody, Brain Derived Neurotrophic Factor Antibody, MGC34632 Antibody

Immunogen

Synthetic peptide from the N-terminal of human BDNF

Purification

Peptide Affinity Purified

Storage **-20°C**

Storage Buffer

PBS, 50% glycerol, 0.09% sodium azide

Shipping Temperature **Blue Ice or 4°C**

Certificate of Analysis

A 1:1000 dilution of SPC-703 was sufficient for detection of BDNF on 293T Rapamycin-treated lysates using Goat anti-rabbit IgG:HRP as the secondary antibody.

Cellular Localization

Secreted

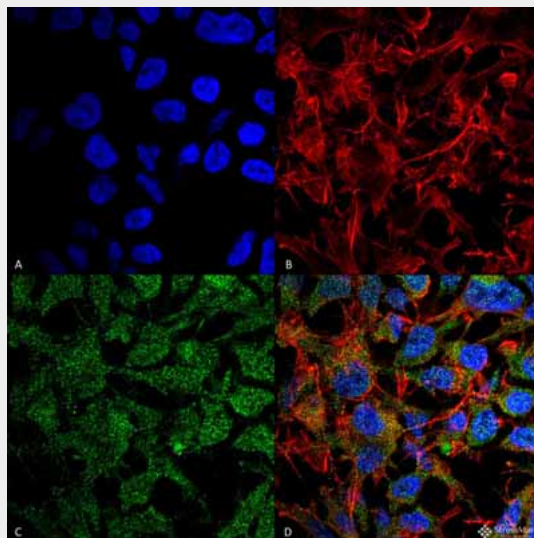
BDNF Antibody - Protocols

Provided below are standard protocols that you may find useful for product applications.

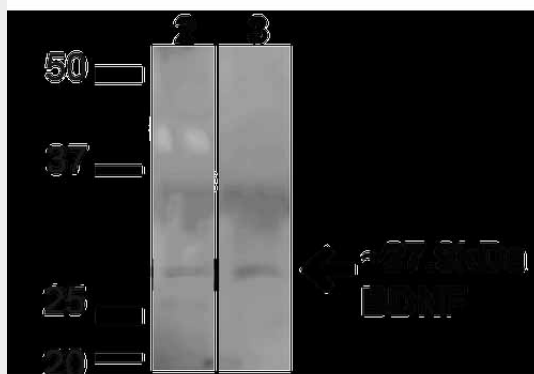
- [Western Blot](#)
- [Blocking Peptides](#)
- [Dot Blot](#)
- [Immunohistochemistry](#)
- [Immunofluorescence](#)
- [Immunoprecipitation](#)

- [Flow Cytometry](#)
- [Cell Culture](#)

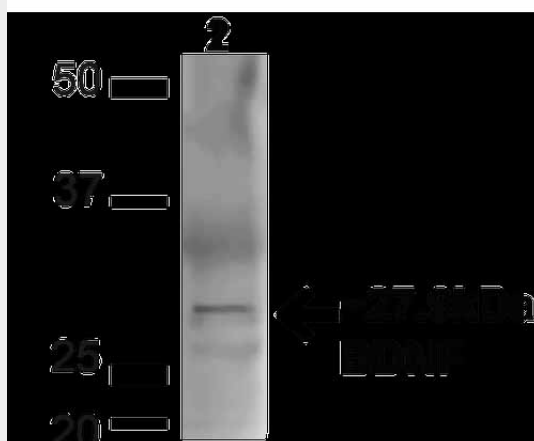
BDNF Antibody - Images



Immunocytochemistry/Immunofluorescence analysis using Rabbit Anti-BDNF Polyclonal Antibody (ASM10558). Tissue: Neuroblastoma cell line (SK-N-BE). Species: Human. Fixation: 4% Formaldehyde for 15 min at RT. Primary Antibody: Rabbit Anti-BDNF Polyclonal Antibody (ASM10558) at 1:100 for 60 min at RT. Secondary Antibody: Goat Anti-Rabbit ATTO 488 at 1:100 for 60 min at RT. Counterstain: Phalloidin Texas Red F-Actin stain; DAPI (blue) nuclear stain at 1:1000, 1:5000 for 60min RT, 5min RT. Localization: Secreted, Cytoplasm, Membrane-bound vesicle. Magnification: 60X. (A) DAPI (blue) nuclear stain (B) Phalloidin Texas Red F-Actin stain (C) BDNF Antibody (D) Composite.



Western blot analysis of Human HeLa and 293T cell lysates showing detection of ~27.9 Kda BDNF protein using Rabbit Anti-BDNF Polyclonal Antibody (ASM10558). Lane 1: MW Ladder. Lane 2: Human HeLa (20 µg). Lane 3: Human 293T (20 µg). Load: 20 µg. Block: 5% milk + TBST for 1 hour at RT. Primary Antibody: Rabbit Anti-BDNF Polyclonal Antibody (ASM10558) at 1:1000 for 1 hour at RT. Secondary Antibody: Goat Anti-Rabbit: HRP at 1:2000 for 1 hour at RT. Color Development: TMB solution for 12 min at RT. Predicted/Observed Size: ~27.9 Kda.



Western blot analysis of Mouse Brain showing detection of ~27.9 Kda BDNF protein using Rabbit Anti-BDNF Polyclonal Antibody (ASM10558). Lane 1: MW Ladder. Lane 2: Mouse Brain (20 µg). Load: 20 µg. Block: 5% milk + TBST for 1 hour at RT. Primary Antibody: Rabbit Anti-BDNF Polyclonal Antibody (ASM10558) at 1:1000 for 1 hour at RT. Secondary Antibody: Goat Anti-Rabbit: HRP at 1:2000 for 1 hour at RT. Color Development: TMB solution for 12 min at RT. Predicted/Observed Size: ~27.9 Kda.

BDNF Antibody - Background

Brain-derived neurotrophic factor, also known as BDNF, is a protein that, in humans, is encoded by the BDNF gene. BDNF is a member of the neurotrophin family of growth factors, which are related to the canonical Nerve Growth Factor. Neurotrophic factors are found in the brain and the periphery. The effects of BDNF on motor neurons might be useful in treating patients with motor neuropathies and ALS (1-3).

BDNF Antibody - References

1. Wetmore C., Ernfors P., Persson H., Olson L. (1990) Exp. Neurol. 109(2): 141-152.
2. Thoenen H., Zafra F., Hengerer B., Lindholm D. (1991) Ann NY Acad Sci. 640: 86-90.
3. Chun H.S., Son J.J., Son J.H. (2000) Neuroreport. 11(3): 511-514.