

**ACP2 Antibody (monoclonal) (M01)**

Mouse monoclonal antibody raised against a full length recombinant ACP2.

Catalog # AT1028a

**Specification**

---

**ACP2 Antibody (monoclonal) (M01) - Product Information**

Application	IF, WB, IHC, E
Primary Accession	<a href="#">P11117</a>
Other Accession	<a href="#">BC003160</a>
Reactivity	Human
Host	mouse
Clonality	Monoclonal
Isotype	IgG2b lambda
Calculated MW	48344

**ACP2 Antibody (monoclonal) (M01) - Additional Information**

**Gene ID** 53

**Other Names**

Lysosomal acid phosphatase, LAP, ACP2

**Target/Specificity**

ACP2 (AAH03160, 1 a.a. ~ 423 a.a) full-length recombinant protein with GST tag. MW of the GST tag alone is 26 KDa.

**Dilution**

WB~~1:500~1000

**Format**

Clear, colorless solution in phosphate buffered saline, pH 7.2 .

**Storage**

Store at -20°C or lower. Aliquot to avoid repeated freezing and thawing.

**Precautions**

ACP2 Antibody (monoclonal) (M01) is for research use only and not for use in diagnostic or therapeutic procedures.

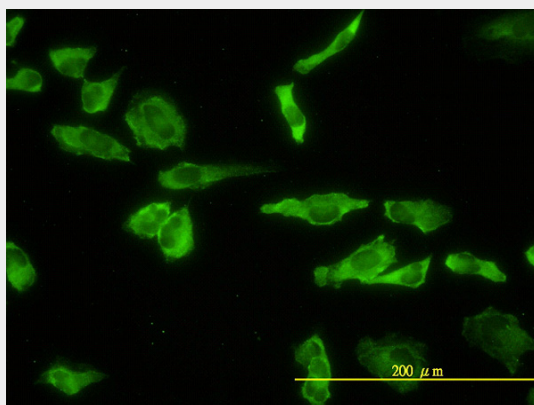
**ACP2 Antibody (monoclonal) (M01) - Protocols**

Provided below are standard protocols that you may find useful for product applications.

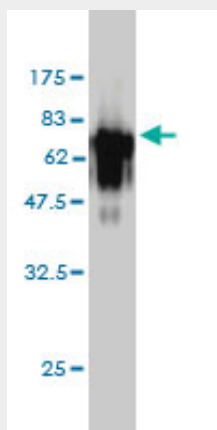
- [Western Blot](#)
- [Blocking Peptides](#)
- [Dot Blot](#)
- [Immunohistochemistry](#)

- [Immunofluorescence](#)
- [Immunoprecipitation](#)
- [Flow Cytometry](#)
- [Cell Culture](#)

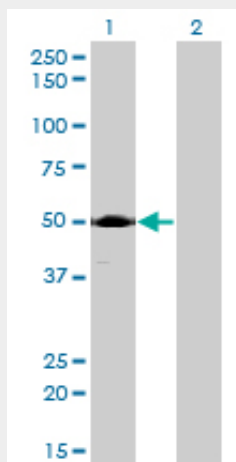
#### ACP2 Antibody (monoclonal) (M01) - Images



Immunofluorescence of monoclonal antibody to ACP2 on HeLa cell. [antibody concentration 10 ug/ml]



Antibody Reactive Against Recombinant Protein. Western Blot detection against Immunogen (72.27 kDa) .

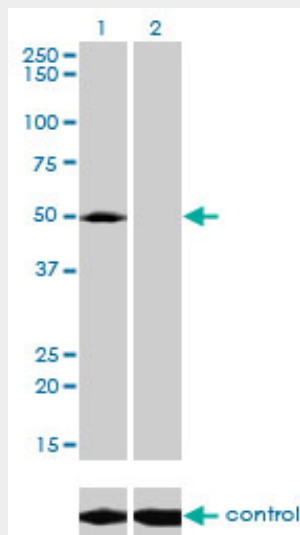


Western Blot analysis of ACP2 expression in transfected 293T cell line by ACP2 monoclonal

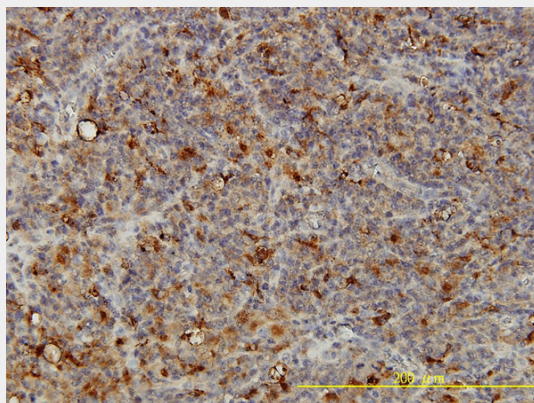
antibody (M01), clone M1-4A12.

Lane 1: ACP2 transfected lysate(48.3 KDa).

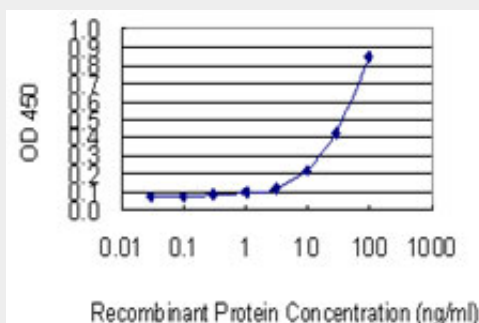
Lane 2: Non-transfected lysate.



Western blot analysis of ACP2 over-expressed 293 cell line, cotransfected with ACP2 Validated Chimera RNAi (Cat # AT1028a)



Immunoperoxidase of monoclonal antibody to ACP2 on formalin-fixed paraffin-embedded human lymphoma tissue. [antibody concentration 5 ug/ml]



Detection limit for recombinant GST tagged ACP2 is 1 ng/ml as a capture antibody.

### ACP2 Antibody (monoclonal) (M01) - Background

This gene encodes the beta subunit of lysosomal acid phosphatase (LAP). LAP is chemically and

genetically distinct from red cell acid phosphatase. The encoded protein belongs to a family of distinct isoenzymes which hydrolyze orthophosphoric monoesters to alcohol and phosphate. Mutations in this gene or in the related alpha subunit gene cause acid phosphatase deficiency. Multiple alternatively spliced transcript variants encoding different isoforms have been identified for this gene.

#### **ACP2 Antibody (monoclonal) (M01) - References**

Polymorphisms in mitochondrial genes and prostate cancer risk. Wang L, et al. Cancer Epidemiol Biomarkers Prev, 2008 Dec. PMID 19064571. Identification of a novel risk locus for progressive supranuclear palsy by a pooled genomewide scan of 500,288 single-nucleotide polymorphisms. Melquist S, et al. Am J Hum Genet, 2007 Apr. PMID 17357082. Diversification of transcriptional modulation: large-scale identification and characterization of putative alternative promoters of human genes. Kimura K, et al. Genome Res, 2006 Jan. PMID 16344560. The status, quality, and expansion of the NIH full-length cDNA project: the Mammalian Gene Collection (MGC). Gerhard DS, et al. Genome Res, 2004 Oct. PMID 15489334. Generation and initial analysis of more than 15,000 full-length human and mouse cDNA sequences. Strausberg RL, et al. Proc Natl Acad Sci U S A, 2002 Dec 24. PMID 12477932.