

**AMBP Antibody (monoclonal) (M01)****Mouse monoclonal antibody raised against a full length recombinant AMBP.****Catalog # AT1129a****Specification**

---

**AMBP Antibody (monoclonal) (M01) - Product Information**

Application	IF, WB, IHC, E
Primary Accession	<a href="#">P02760</a>
Other Accession	<a href="#">BC041593</a>
Reactivity	Human
Host	Mouse
Clonality	Monoclonal
Isotype	IgG1 Kappa
Calculated MW	38999

**AMBP Antibody (monoclonal) (M01) - Additional Information****Gene ID** 259**Other Names**

Protein AMBP, Alpha-1-microglobulin, Protein HC, Alpha-1 microglycoprotein, Complex-forming glycoprotein heterogeneous in charge, Inter-alpha-trypsin inhibitor light chain, ITI-LC, Bikunin, EDC1, HI-30, Uronic-acid-rich protein, Trypstatin, AMBP, HCP, ITIL

**Target/Specificity**

AMBP (AAH41593, 19 a.a. ~ 352 a.a) full-length recombinant protein with GST tag. MW of the GST tag alone is 26 KDa.

**Dilution**

WB~~1:500~1000

**Format**

Clear, colorless solution in phosphate buffered saline, pH 7.2 .

**Storage**

Store at -20°C or lower. Aliquot to avoid repeated freezing and thawing.

**Precautions**

AMBP Antibody (monoclonal) (M01) is for research use only and not for use in diagnostic or therapeutic procedures.

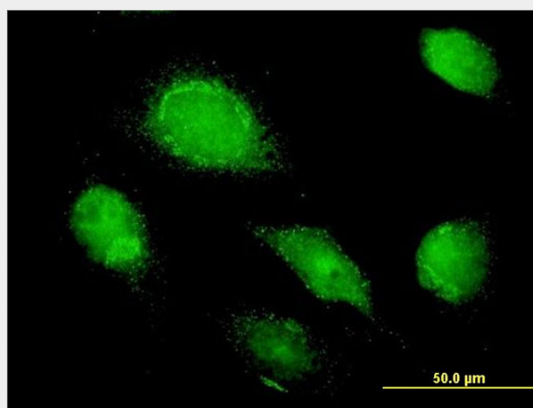
**AMBP Antibody (monoclonal) (M01) - Protocols**

Provided below are standard protocols that you may find useful for product applications.

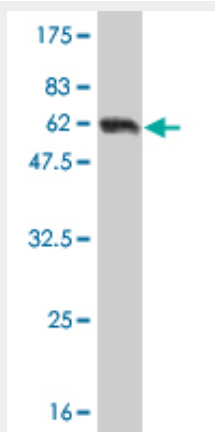
- [Western Blot](#)
- [Blocking Peptides](#)

- [Dot Blot](#)
- [Immunohistochemistry](#)
- [Immunofluorescence](#)
- [Immunoprecipitation](#)
- [Flow Cytometry](#)
- [Cell Culture](#)

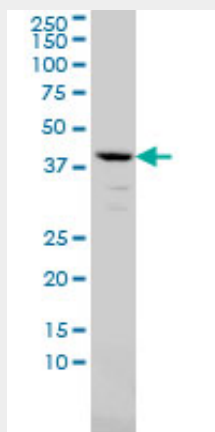
## AMBP Antibody (monoclonal) (M01) - Images



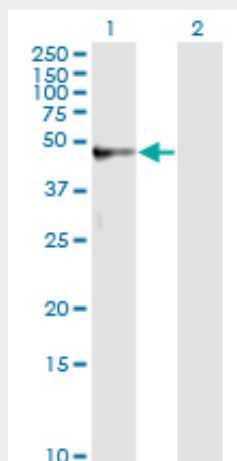
Immunofluorescence of monoclonal antibody to AMBP on HeLa cell. [antibody concentration 10 ug/ml]



Antibody Reactive Against Recombinant Protein. Western Blot detection against Immunogen (62.48 KDa) .



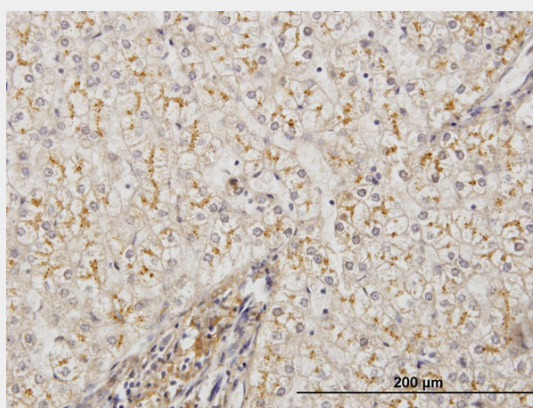
AMBP monoclonal antibody (M01), clone 3F1 Western Blot analysis of AMBP expression in A-549 (Cat # AT1129a )



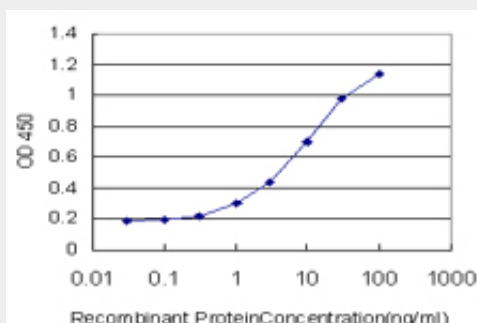
Western Blot analysis of AMBP expression in transfected 293T cell line by AMBP monoclonal antibody (M01), clone 3F1.

Lane 1: AMBP transfected lysate(39 KDa).

Lane 2: Non-transfected lysate.



Immunoperoxidase of monoclonal antibody to AMBP on formalin-fixed paraffin-embedded human liver. [antibody concentration 1 ug/ml]



Detection limit for recombinant GST tagged AMBP is approximately 1ng/ml as a capture antibody.

### AMBP Antibody (monoclonal) (M01) - Background

This gene encodes a complex glycoprotein secreted in plasma. The precursor is proteolytically processed into distinct functioning proteins: alpha-1-microglobulin, which belongs to the

superfamily of lipocalin transport proteins and may play a role in the regulation of inflammatory processes, and bikunin, which is a urinary trypsin inhibitor belonging to the superfamily of Kunitz-type protease inhibitors and plays an important role in many physiological and pathological processes. This gene is located on chromosome 9 in a cluster of lipocalin genes.

#### **AMBP Antibody (monoclonal) (M01) - References**

1. Differential proteomics analysis of amniotic fluid in pregnancies of increased nuchal translucency with normal karyotype. Cheng PJ, Wang TH, Huang SY, Kao CC, Lu JH, Hsiao CH, Steven Shaw SW. Prenat Diagn. 2011 Feb 10. doi: 10.1002 /pd.2719. [Epub ahead of print]