

**ANAPC11 Antibody (monoclonal) (M01)****Mouse monoclonal antibody raised against a full length recombinant ANAPC11.****Catalog # AT1136a****Specification**

---

**ANAPC11 Antibody (monoclonal) (M01) - Product Information**

Application	WB, E
Primary Accession	<a href="#">Q9NYG5</a>
Other Accession	<a href="#">BC000607</a>
Reactivity	Human
Host	mouse
Clonality	Monoclonal
Isotype	IgG1 kappa
Calculated MW	9841

**ANAPC11 Antibody (monoclonal) (M01) - Additional Information****Gene ID** 51529**Other Names**

Anaphase-promoting complex subunit 11, APC11, Cyclosome subunit 11, Hepatocellular carcinoma-associated RING finger protein, ANAPC11

**Target/Specificity**

ANAPC11 (AAH00607, 1 a.a. ~ 54 a.a) full-length recombinant protein with GST tag. MW of the GST tag alone is 26 KDa.

**Dilution**

WB~~1:500~1000

**Format**

Clear, colorless solution in phosphate buffered saline, pH 7.2 .

**Storage**

Store at -20°C or lower. Aliquot to avoid repeated freezing and thawing.

**Precautions**

ANAPC11 Antibody (monoclonal) (M01) is for research use only and not for use in diagnostic or therapeutic procedures.

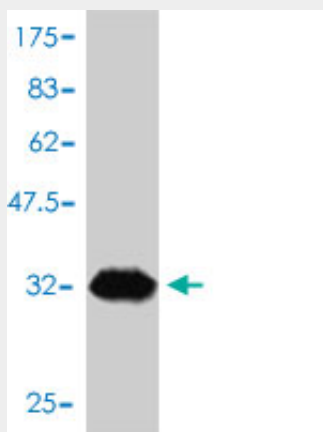
**ANAPC11 Antibody (monoclonal) (M01) - Protocols**

Provided below are standard protocols that you may find useful for product applications.

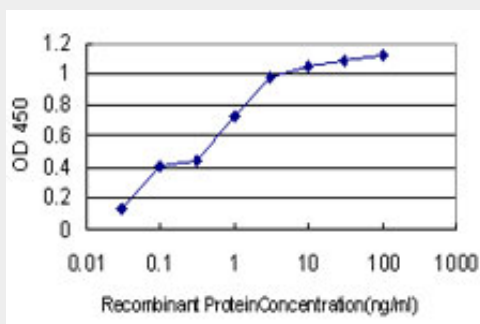
- [Western Blot](#)
- [Blocking Peptides](#)
- [Dot Blot](#)

- [Immunohistochemistry](#)
- [Immunofluorescence](#)
- [Immunoprecipitation](#)
- [Flow Cytometry](#)
- [Cell Culture](#)

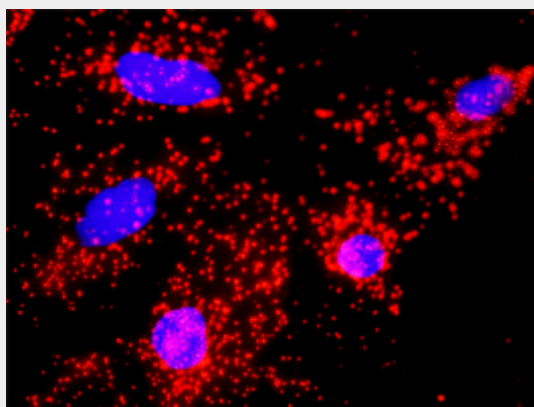
#### ANAPC11 Antibody (monoclonal) (M01) - Images



Antibody Reactive Against Recombinant Protein. Western Blot detection against Immunogen (31.68 kDa) .



Detection limit for recombinant GST tagged ANAPC11 is approximately 0.03 ng/ml as a capture antibody.



Proximity Ligation Analysis of protein-protein interactions between CDC20 and ANAPC11. HeLa cells were stained with anti-CDC20 rabbit purified polyclonal 1:1200 and anti-ANAPC11 mouse monoclonal antibody 1:50. Each red dot represents the detection of protein-protein interaction complex, and nuclei were counterstained with DAPI (blue).

**ANAPC11 Antibody (monoclonal) (M01) - References**

The emerging role of APC/CCdh1 in controlling differentiation, genomic stability and tumor suppression. W?sch R, et al. Oncogene, 2010 Jan 7. PMID 19826416. The APC/C maintains the spindle assembly checkpoint by targeting Cdc20 for destruction. Nilsson J, et al. Nat Cell Biol, 2008 Dec. PMID 18997788. Mechanism of ubiquitin-chain formation by the human anaphase-promoting complex. Jin L, et al. Cell, 2008 May 16. PMID 18485873. Identification of intrahepatic cholangiocarcinoma related genes by comparison with normal liver tissues using expressed sequence tags. Wang AG, et al. Biochem Biophys Res Commun, 2006 Jul 7. PMID 16712791. Localization of the coactivator Cdh1 and the cullin subunit Apc2 in a cryo-electron microscopy model of vertebrate APC/C. Dube P, et al. Mol Cell, 2005 Dec 22. PMID 16364912.