

APEG1 Antibody (monoclonal) (M01)

Mouse monoclonal antibody raised against a full length recombinant APEG1.

Catalog # AT1159a

Specification

APEG1 Antibody (monoclonal) (M01) - Product Information

Application	WB, E
Primary Accession	Q15772
Other Accession	BC006346
Reactivity	Human
Host	mouse
Clonality	Monoclonal
Isotype	IgG1 Kappa
Calculated MW	354289

APEG1 Antibody (monoclonal) (M01) - Additional Information

Gene ID 10290

Other Names

Striated muscle preferentially expressed protein kinase, Aortic preferentially expressed protein 1, APEG-1, SPEG, APEG1, KIAA1297

Target/Specificity

APEG1 (AAH06346, 1 a.a. ~ 113 a.a) full-length recombinant protein with GST tag. MW of the GST tag alone is 26 KDa.

Dilution

WB~~1:500~1000

Format

Clear, colorless solution in phosphate buffered saline, pH 7.2 .

Storage

Store at -20°C or lower. Aliquot to avoid repeated freezing and thawing.

Precautions

APEG1 Antibody (monoclonal) (M01) is for research use only and not for use in diagnostic or therapeutic procedures.

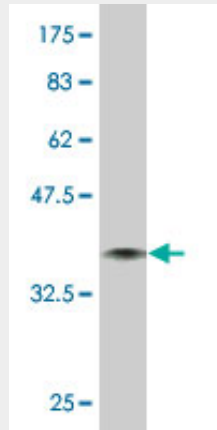
APEG1 Antibody (monoclonal) (M01) - Protocols

Provided below are standard protocols that you may find useful for product applications.

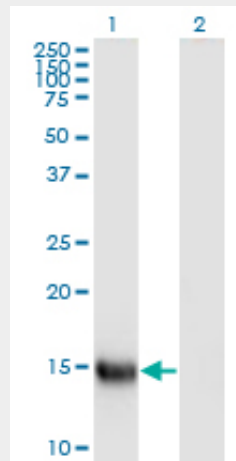
- [Western Blot](#)
- [Blocking Peptides](#)
- [Dot Blot](#)

- [Immunohistochemistry](#)
- [Immunofluorescence](#)
- [Immunoprecipitation](#)
- [Flow Cytometry](#)
- [Cell Culture](#)

APEG1 Antibody (monoclonal) (M01) - Images



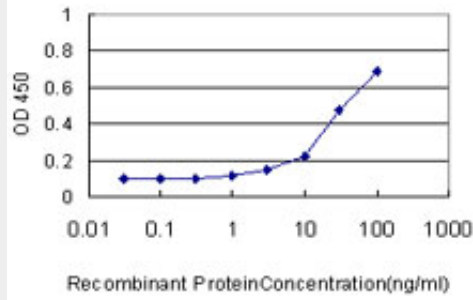
Antibody Reactive Against Recombinant Protein. Western Blot detection against Immunogen (38.17 kDa) .



Western Blot analysis of SPEG expression in transfected 293T cell line by APEG1 monoclonal antibody (M01), clone S2.

Lane 1: SPEG transfected lysate (Predicted MW: 12.7 kDa).

Lane 2: Non-transfected lysate.



Detection limit for recombinant GST tagged APEG1 is approximately 3ng/ml as a capture antibody.

APEG1 Antibody (monoclonal) (M01) - Background

This gene encodes a protein with similarity to members of the myosin light chain kinase family. This protein family is required for myocyte cytoskeletal development. Studies in mouse have determined that a lack of this protein affected myocardial development. Multiple alternatively spliced transcript variants have been reported for this gene, but the full-length nature of only two variants that encode different protein isoforms has been defined.

APEG1 Antibody (monoclonal) (M01) - References

Variation at the NFATC2 Locus Increases the Risk of Thiazolidinedione-Induced Edema in the Diabetes REduction Assessment with ramipril and rosiglitazone Medication (DREAM) Study. Bailey SD, et al. *Diabetes Care*, 2010 Jul 13. PMID 20628086. Gene-centric association signals for lipids and apolipoproteins identified via the HumanCVD BeadChip. Talmud PJ, et al. *Am J Hum Genet*, 2009 Nov. PMID 19913121. The human desmin locus: gene organization and LCR-mediated transcriptional control. Tam JL, et al. *Genomics*, 2006 Jun. PMID 16545539. X-ray structure of engineered human Aortic Preferentially Expressed Protein-1 (APEG-1). Manjasetty BA, et al. *BMC Struct Biol*, 2005 Dec 14. PMID 16354304. Diversification of transcriptional modulation: large-scale identification and characterization of putative alternative promoters of human genes. Kimura K, et al. *Genome Res*, 2006 Jan. PMID 16344560.