

APOL3 Antibody (monoclonal) (M01)**Mouse monoclonal antibody raised against a partial recombinant APOL3.****Catalog # AT1170a****Specification**

APOL3 Antibody (monoclonal) (M01) - Product Information

| | |
|-------------------|---------------------------|
| Application | WB, E |
| Primary Accession | O95236 |
| Other Accession | NM_145640 |
| Reactivity | Human |
| Host | mouse |
| Clonality | Monoclonal |
| Isotype | IgG2a Kappa |
| Calculated MW | 44278 |

APOL3 Antibody (monoclonal) (M01) - Additional Information**Gene ID** 80833**Other Names**

Apolipoprotein L3, Apolipoprotein L-III, ApoL-III, TNF-inducible protein CG12-1, CG12_1, APOL3

Target/Specificity

APOL3 (NP_663615, 240 a.a. ~ 336 a.a) partial recombinant protein with GST tag. MW of the GST tag alone is 26 KDa.

Dilution

WB~~1:500~1000

Format

Clear, colorless solution in phosphate buffered saline, pH 7.2 .

Storage

Store at -20°C or lower. Aliquot to avoid repeated freezing and thawing.

Precautions

APOL3 Antibody (monoclonal) (M01) is for research use only and not for use in diagnostic or therapeutic procedures.

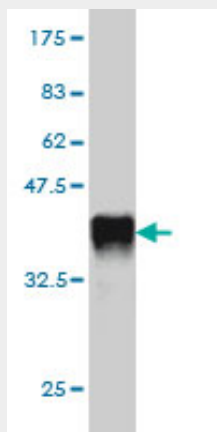
APOL3 Antibody (monoclonal) (M01) - Protocols

Provided below are standard protocols that you may find useful for product applications.

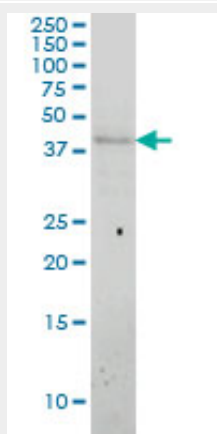
- [Western Blot](#)
- [Blocking Peptides](#)
- [Dot Blot](#)
- [Immunohistochemistry](#)

- [Immunofluorescence](#)
- [Immunoprecipitation](#)
- [Flow Cytometry](#)
- [Cell Culture](#)

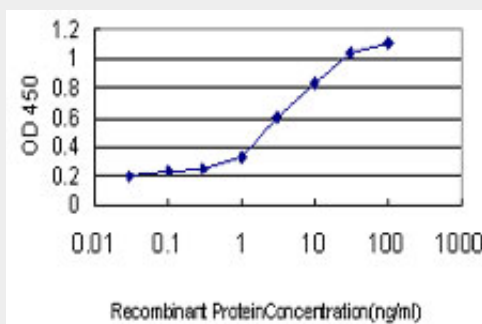
APOL3 Antibody (monoclonal) (M01) - Images



Antibody Reactive Against Recombinant Protein. Western Blot detection against Immunogen (36.41 kDa) .



APOL3 monoclonal antibody (M01), clone 4E5 Western Blot analysis of APOL3 expression in Jurkat (Cat # AT1170a)



Detection limit for recombinant GST tagged APOL3 is approximately 0.03 ng/ml as a capture antibody.

APOL3 Antibody (monoclonal) (M01) - Background

This gene is a member of the apolipoprotein L gene family, and it is present in a cluster with other family members on chromosome 6. The encoded protein is found in the cytoplasm, where it may affect the movement of lipids, including cholesterol, and/or allow the binding of lipids to organelles. In addition, expression of this gene is up-regulated by tumor necrosis factor-alpha in endothelial cells lining the normal and atherosclerotic iliac artery and aorta. Alternative splicing results in multiple transcript variants.

APOL3 Antibody (monoclonal) (M01) - References

Family-based association analysis of 42 hereditary prostate cancer families identifies the Apolipoprotein L3 region on chromosome 22q12 as a risk locus. Johanneson B, et al. Hum Mol Genet, 2010 Oct 1. PMID 20631155. Physiogenomic analysis of statin-treated patients: domain-specific counter effects within the ACACB gene on low-density lipoprotein cholesterol? Ruafo G, et al. Pharmacogenomics, 2010 Jul. PMID 20602615. Personalized smoking cessation: interactions between nicotine dose, dependence and quit-success genotype score. Rose JE, et al. Mol Med, 2010 Jul-Aug. PMID 20379614. New genetic associations detected in a host response study to hepatitis B vaccine. Davila S, et al. Genes Immun, 2010 Apr. PMID 20237496. Identifying leukocyte gene expression patterns associated with plasma lipid levels in human subjects. Ma J, et al. Atherosclerosis, 2007 Mar. PMID 16806233.