

**BANF1 Antibody (monoclonal) (M07)****Mouse monoclonal antibody raised against a full length recombinant BANF1.****Catalog # AT1267a****Specification**

---

**BANF1 Antibody (monoclonal) (M07) - Product Information**

Application	IF, WB, E
Primary Accession	<a href="#">O75531</a>
Other Accession	<a href="#">BC005942</a>
Reactivity	Human, Mouse, Rat
Host	mouse
Clonality	Monoclonal
Isotype	IgG2a Kappa
Calculated MW	10059

**BANF1 Antibody (monoclonal) (M07) - Additional Information****Gene ID** 8815**Other Names**

Barrier-to-autointegration factor, Breakpoint cluster region protein 1, Barrier-to-autointegration factor, N-terminally processed, BANF1, BAF, BCRG1

**Target/Specificity**

BANF1 (AAH05942, 1 a.a. ~ 89 a.a) full-length recombinant protein with GST tag. MW of the GST tag alone is 26 KDa.

**Dilution**

WB~~1:500~1000

**Format**

Clear, colorless solution in phosphate buffered saline, pH 7.2 .

**Storage**

Store at -20°C or lower. Aliquot to avoid repeated freezing and thawing.

**Precautions**

BANF1 Antibody (monoclonal) (M07) is for research use only and not for use in diagnostic or therapeutic procedures.

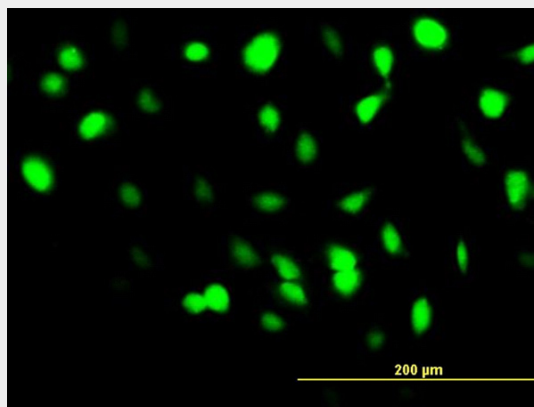
**BANF1 Antibody (monoclonal) (M07) - Protocols**

Provided below are standard protocols that you may find useful for product applications.

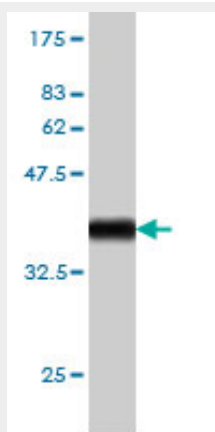
- [Western Blot](#)
- [Blocking Peptides](#)
- [Dot Blot](#)

- [Immunohistochemistry](#)
- [Immunofluorescence](#)
- [Immunoprecipitation](#)
- [Flow Cytometry](#)
- [Cell Culture](#)

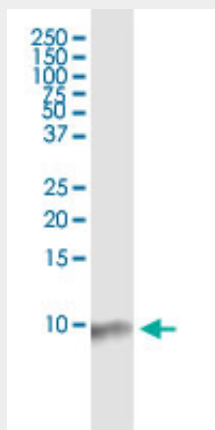
### BANF1 Antibody (monoclonal) (M07) - Images



Immunofluorescence of monoclonal antibody to BANF1 on HeLa cell. [antibody concentration 10 ug/ml]

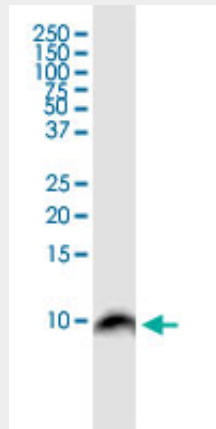


Antibody Reactive Against Recombinant Protein. Western Blot detection against Immunogen (35.53 KDa) .

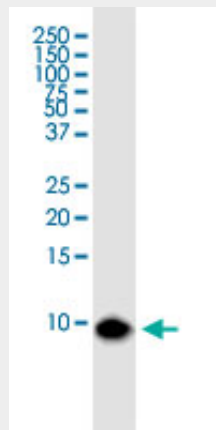


BANF1 monoclonal antibody (M07), clone M2. Western Blot analysis of BANF1 expression in

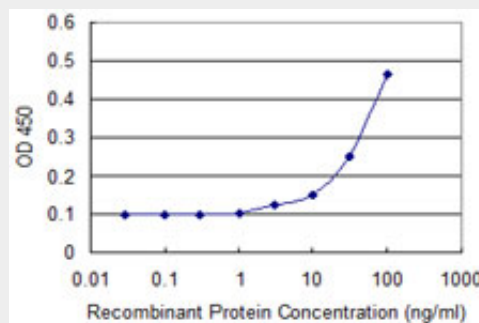
PC-12.



BANF1 monoclonal antibody (M07), clone M2. Western Blot analysis of BANF1 expression in Raw 264.7.



BANF1 monoclonal antibody (M07), clone M2. Western Blot analysis of BANF1 expression in Jurkat.



Detection limit for recombinant GST tagged BANF1 is approximately 10ng/ml as a capture antibody.

### **BANF1 Antibody (monoclonal) (M07) - Background**

The protein encoded by this gene was first identified by its ability to protect retroviruses from intramolecular integration and therefore promote intermolecular integration into the host cell genome. The protein forms a homodimer which localizes to both the nucleus and cytoplasm and is specifically associated with chromosomes during mitosis. This protein binds to double stranded DNA in a non-specific manner and also binds to LEM-domain containing proteins of the nuclear envelope. This protein is thought to facilitate nuclear reassembly by binding with both DNA and inner nuclear

membrane proteins and thereby recruit chromatin to the nuclear periphery. Alternative splicing results in multiple transcript variants encoding the same protein.

#### **BANF1 Antibody (monoclonal) (M07) - References**

1.Functional Disruption of the Moloney Murine Leukemia Virus Preintegration Complex by Vaccinia-related Kinases.Suzuki Y, Ogawa K, Koyanagi Y, Suzuki Y.J Biol Chem. 2010 Jul 30;285(31):24032-43. Epub 2010 May 28.