

**BCAS1 Antibody (monoclonal) (M03)****Mouse monoclonal antibody raised against a partial recombinant BCAS1.****Catalog # AT1279a****Specification**

---

**BCAS1 Antibody (monoclonal) (M03) - Product Information**

Application	WB, IHC, E
Primary Accession	<a href="#">O75363</a>
Other Accession	<a href="#">NM_003657</a>
Reactivity	Human
Host	mouse
Clonality	Monoclonal
Isotype	IgG2a Kappa
Calculated MW	61709

**BCAS1 Antibody (monoclonal) (M03) - Additional Information****Gene ID** 8537**Other Names**

Breast carcinoma-amplified sequence 1, Amplified and overexpressed in breast cancer, Novel amplified in breast cancer 1, BCAS1, AIBC1, NABC1

**Target/Specificity**

BCAS1 (NP\_003648, 1 a.a. ~ 80 a.a) partial recombinant protein with GST tag. MW of the GST tag alone is 26 KDa.

**Dilution**

WB~~1:500~1000

**Format**

Clear, colorless solution in phosphate buffered saline, pH 7.2 .

**Storage**

Store at -20°C or lower. Aliquot to avoid repeated freezing and thawing.

**Precautions**

BCAS1 Antibody (monoclonal) (M03) is for research use only and not for use in diagnostic or therapeutic procedures.

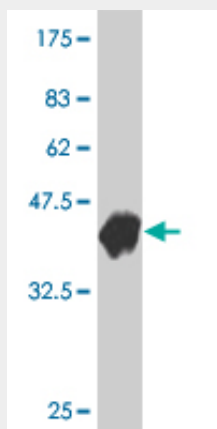
**BCAS1 Antibody (monoclonal) (M03) - Protocols**

Provided below are standard protocols that you may find useful for product applications.

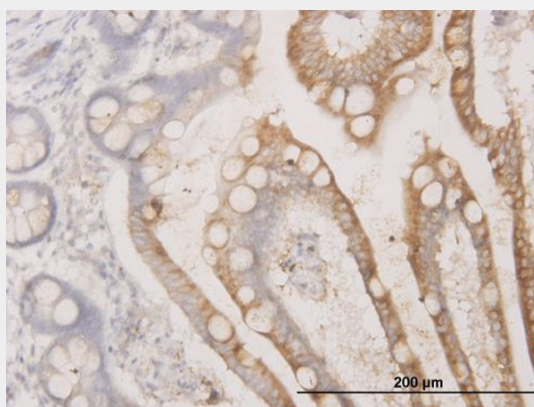
- [Western Blot](#)
- [Blocking Peptides](#)
- [Dot Blot](#)

- [Immunohistochemistry](#)
- [Immunofluorescence](#)
- [Immunoprecipitation](#)
- [Flow Cytometry](#)
- [Cell Culture](#)

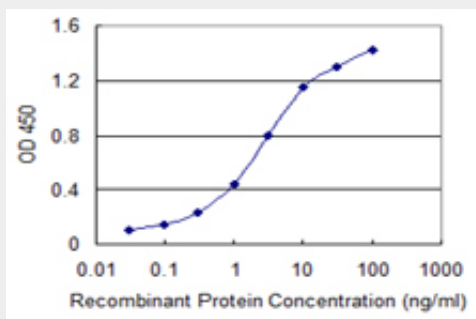
### BCAS1 Antibody (monoclonal) (M03) - Images



Antibody Reactive Against Recombinant Protein. Western Blot detection against Immunogen (34.54 kDa) .



Immunoperoxidase of monoclonal antibody to BCAS1 on formalin-fixed paraffin-embedded human small Intestine. [antibody concentration 1.5 ug/ml]



Detection limit for recombinant GST tagged BCAS1 is 0.03 ng/ml as a capture antibody.

### BCAS1 Antibody (monoclonal) (M03) - Background

This gene resides in a region at 20q13 which is amplified in a variety of tumor types and associated

with more aggressive tumor phenotypes. Among the genes identified from this region, it was found to be highly expressed in three amplified breast cancer cell lines and in one breast tumor without amplification at 20q13.2. However, this gene is not in the common region of maximal amplification and its expression was not detected in the breast cancer cell line MCF7, in which this region is highly amplified. Although not consistently expressed, this gene is a candidate oncogene.

#### **BCAS1 Antibody (monoclonal) (M03) - References**

Personalized smoking cessation: interactions between nicotine dose, dependence and quit-success genotype score. Rose JE, et al. Mol Med, 2010 Jul-Aug. PMID 20379614. Large-scale mapping of human protein-protein interactions by mass spectrometry. Ewing RM, et al. Mol Syst Biol, 2007. PMID 17353931. Analysis of candidate genes for prostate cancer. Burmester JK, et al. Hum Hered, 2004. PMID 15583422. The status, quality, and expansion of the NIH full-length cDNA project: the Mammalian Gene Collection (MGC). Gerhard DS, et al. Genome Res, 2004 Oct. PMID 15489334. Characterization of the novel amplified in breast cancer-1 (NABC1) gene product. Beardsley DJ, et al. Exp Cell Res, 2003 Nov 1. PMID 14567997.