

CAPS Antibody (monoclonal) (M01)

Mouse monoclonal antibody raised against a partial recombinant CAPS.

Catalog # AT1392a

Specification

CAPS Antibody (monoclonal) (M01) - Product Information

Application	WB, E
Primary Accession	Q13938
Other Accession	NM_004058
Reactivity	Human
Host	mouse
Clonality	Monoclonal
Isotype	IgG1 Kappa
Calculated MW	30240

CAPS Antibody (monoclonal) (M01) - Additional Information

Gene ID 828

Other Names

Calcyphosin, Calcyphosine, CAPS

Target/Specificity

CAPS (NP_004049, 1 a.a. ~ 109 a.a) partial recombinant protein with GST tag. MW of the GST tag alone is 26 KDa.

Dilution

WB~~1:500~1000

Format

Clear, colorless solution in phosphate buffered saline, pH 7.2 .

Storage

Store at -20°C or lower. Aliquot to avoid repeated freezing and thawing.

Precautions

CAPS Antibody (monoclonal) (M01) is for research use only and not for use in diagnostic or therapeutic procedures.

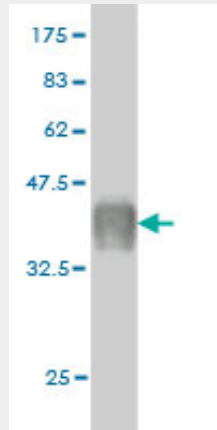
CAPS Antibody (monoclonal) (M01) - Protocols

Provided below are standard protocols that you may find useful for product applications.

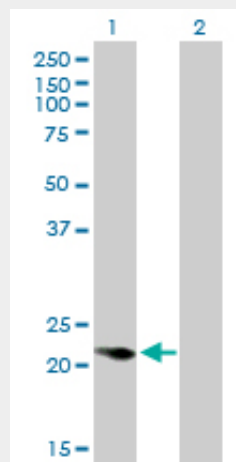
- [Western Blot](#)
- [Blocking Peptides](#)
- [Dot Blot](#)
- [Immunohistochemistry](#)

- [Immunofluorescence](#)
- [Immunoprecipitation](#)
- [Flow Cytometry](#)
- [Cell Culture](#)

CAPS Antibody (monoclonal) (M01) - Images

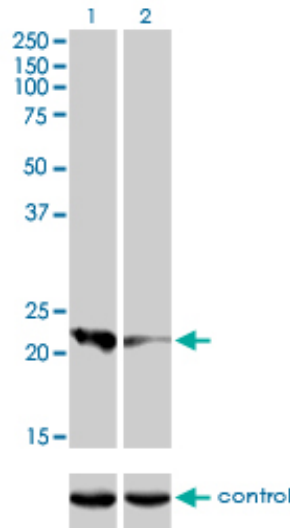


Antibody Reactive Against Recombinant Protein. Western Blot detection against Immunogen (37.73 kDa) .

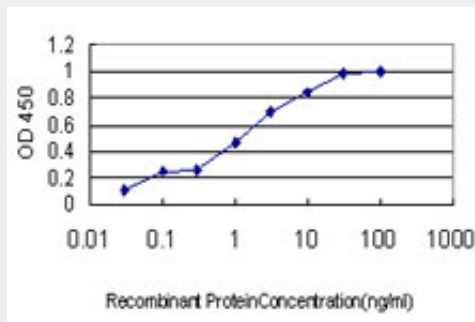


Western Blot analysis of CAPS expression in transfected 293T cell line by CAPS monoclonal antibody (M01), clone 4C6.

Lane 1: CAPS transfected lysate(21 kDa).
Lane 2: Non-transfected lysate.



Western blot analysis of CAPS over-expressed 293 cell line, cotransfected with CAPS Validated Chimera RNAi (Cat # AT1392a)



Detection limit for recombinant GST tagged CAPS is approximately 0.03ng/ml as a capture antibody.

CAPS Antibody (monoclonal) (M01) - Background

This gene encodes a calcium-binding protein, which may play a role in the regulation of ion transport. A similar protein was first described as a potentially important regulatory protein in the dog thyroid and was termed as R2D5 antigen in rabbit. Alternative splicing of this gene generates two transcript variants.

CAPS Antibody (monoclonal) (M01) - References

1. Identification of Novel Biomarkers in Pediatric Primitive Neuroectodermal Tumors and Ependymomas by Proteome-Wide Analysis. de Bont JM, den Boer ML, Kros JM, Passier MM, Reddingius RE, Smitt PA, Luider TM, Pieters R. *J Neuropathol Exp Neurol*. 2007 Jun;66(6):505-16.