

**CCDC6 Antibody (monoclonal) (M03)**

Mouse monoclonal antibody raised against a partial recombinant CCDC6.

Catalog # AT1412a

**Specification**

---

**CCDC6 Antibody (monoclonal) (M03) - Product Information**

Application	WB, E
Primary Accession	<a href="#">O16204</a>
Other Accession	<a href="#">NM_005436</a>
Reactivity	Human
Host	mouse
Clonality	Monoclonal
Isotype	IgG1 Kappa
Calculated MW	53291

**CCDC6 Antibody (monoclonal) (M03) - Additional Information****Gene ID** 8030**Other Names**

Coiled-coil domain-containing protein 6, Papillary thyroid carcinoma-encoded protein, Protein H4, CCDC6, D10S170, TST1

**Target/Specificity**

CCDC6 (NP\_005427, 375 a.a. ~ 474 a.a) partial recombinant protein with GST tag. MW of the GST tag alone is 26 KDa.

**Dilution**

WB~~1:500~1000

**Format**

Clear, colorless solution in phosphate buffered saline, pH 7.2 .

**Storage**

Store at -20°C or lower. Aliquot to avoid repeated freezing and thawing.

**Precautions**

CCDC6 Antibody (monoclonal) (M03) is for research use only and not for use in diagnostic or therapeutic procedures.

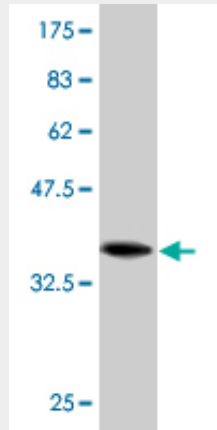
**CCDC6 Antibody (monoclonal) (M03) - Protocols**

Provided below are standard protocols that you may find useful for product applications.

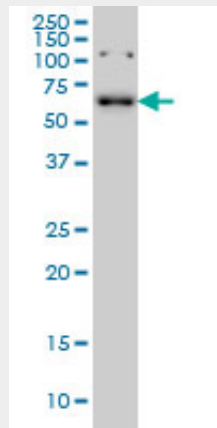
- [Western Blot](#)
- [Blocking Peptides](#)
- [Dot Blot](#)

- [Immunohistochemistry](#)
- [Immunofluorescence](#)
- [Immunoprecipitation](#)
- [Flow Cytometry](#)
- [Cell Culture](#)

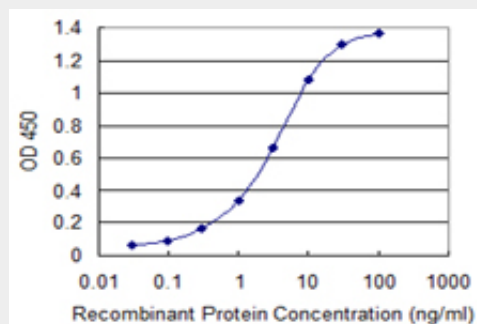
**CCDC6 Antibody (monoclonal) (M03) - Images**



Antibody Reactive Against Recombinant Protein. Western Blot detection against Immunogen (36.74 kDa) .



CCDC6 monoclonal antibody (M03), clone 5D11 Western Blot analysis of CCDC6 expression in K-562 ( (Cat # AT1412a )



Detection limit for recombinant GST tagged CCDC6 is 0.03 ng/ml as a capture antibody.

**CCDC6 Antibody (monoclonal) (M03) - Background**

This gene encodes a coiled-coil domain-containing protein. The encoded protein is ubiquitously expressed and may function as a tumor suppressor. A chromosomal rearrangement resulting in the expression of a fusion gene containing a portion of this gene and the intracellular kinase-encoding domain of the ret proto-oncogene is the cause of thyroid papillary carcinoma.

### **CCDC6 Antibody (monoclonal) (M03) - References**

CCDC6 represses CREB1 activity by recruiting histone deacetylase 1 and protein phosphatase 1. Leone V, et al. *Oncogene*, 2010 Jul 29. PMID 20498639. Personalized smoking cessation: interactions between nicotine dose, dependence and quit-success genotype score. Rose JE, et al. *Mol Med*, 2010 Jul-Aug. PMID 20379614. The variant rs1867277 in FOXE1 gene confers thyroid cancer susceptibility through the recruitment of USF1/USF2 transcription factors. Landa I, et al. *PLoS Genet*, 2009 Sep. PMID 19730683. Defining the human deubiquitinating enzyme interaction landscape. Sowa ME, et al. *Cell*, 2009 Jul 23. PMID 19615732. Transcript level modulates the inherent oncogenicity of RET/PTC oncoproteins. Richardson DS, et al. *Cancer Res*, 2009 Jun 1. PMID 19487296.