

**CCL14 Antibody (monoclonal) (M01)****Mouse monoclonal antibody raised against a partial recombinant CCL14.****Catalog # AT1414a****Specification**

---

**CCL14 Antibody (monoclonal) (M01) - Product Information**

Application	WB, E
Primary Accession	<a href="#">Q16627</a>
Other Accession	<a href="#">BC045165</a>
Reactivity	Human
Host	mouse
Clonality	Monoclonal
Isotype	IgG2b Kappa
Calculated MW	10678

**CCL14 Antibody (monoclonal) (M01) - Additional Information****Gene ID** 6358**Other Names**

C-C motif chemokine 14, Chemokine CC-1/CC-3, HCC-1/HCC-3, HCC-1(1-74), NCC-2, Small-inducible cytokine A14, HCC-1(3-74), HCC-1(4-74), HCC-1(9-74), CCL14, NCC2, SCYA14

**Target/Specificity**

CCL14 (AAH45165, 20 a.a. ~ 93 a.a) partial recombinant protein with GST tag. MW of the GST tag alone is 26 KDa.

**Dilution**

WB~~1:500~1000

**Format**

Clear, colorless solution in phosphate buffered saline, pH 7.2 .

**Storage**

Store at -20°C or lower. Aliquot to avoid repeated freezing and thawing.

**Precautions**

CCL14 Antibody (monoclonal) (M01) is for research use only and not for use in diagnostic or therapeutic procedures.

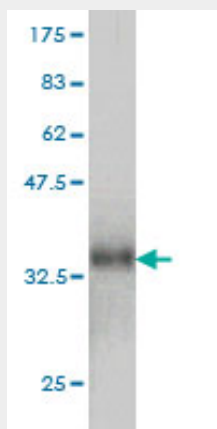
**CCL14 Antibody (monoclonal) (M01) - Protocols**

Provided below are standard protocols that you may find useful for product applications.

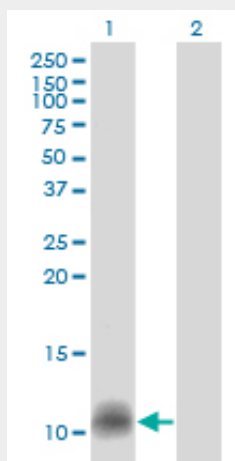
- [Western Blot](#)
- [Blocking Peptides](#)
- [Dot Blot](#)

- [Immunohistochemistry](#)
- [Immunofluorescence](#)
- [Immunoprecipitation](#)
- [Flow Cytometry](#)
- [Cell Culture](#)

### CCL14 Antibody (monoclonal) (M01) - Images



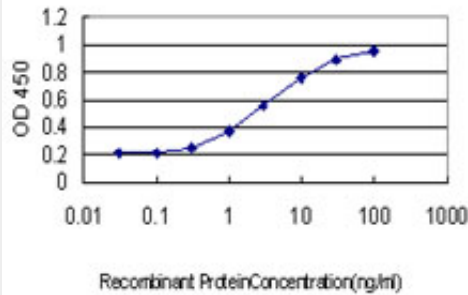
Antibody Reactive Against Recombinant Protein. Western Blot detection against Immunogen (33.77 kDa) .



Western Blot analysis of CCL14 expression in transfected 293T cell line by CCL14 monoclonal antibody (M01), clone 1F12.

Lane 1: CCL14 transfected lysate(10.7 kDa).

Lane 2: Non-transfected lysate.



Detection limit for recombinant GST tagged CCL14 is approximately 0.3ng/ml as a capture antibody.

### **CCL14 Antibody (monoclonal) (M01) - Background**

This gene, chemokine (C-C motif) ligand 14, is one of several CC cytokine genes clustered on 17q11.2. The CC cytokines are secreted proteins characterized by two adjacent cysteines. The cytokine encoded by this gene induces changes in intracellular calcium concentration and enzyme release in monocytes. Multiple transcript variants encoding different isoforms have been found for this gene. Read-through transcripts are also expressed that include exons from the upstream cytokine gene, chemokine (C-C motif) ligand 15, and are represented as GeneID: 348249.

### **CCL14 Antibody (monoclonal) (M01) - References**

Interleukin-9 polymorphism in infants with respiratory syncytial virus infection: an opposite effect in boys and girls. Schuurhof A, et al. *Pediatr Pulmonol*, 2010 Jun. PMID 20503287. Personalized smoking cessation: interactions between nicotine dose, dependence and quit-success genotype score. Rose JE, et al. *Mol Med*, 2010 Jul-Aug. PMID 20379614. A novel role for constitutively expressed epithelial-derived chemokines as antibacterial peptides in the intestinal mucosa. Kotarsky K, et al. *Mucosal Immunol*, 2010 Jan. PMID 19812544. Recognition versus adaptive up-regulation and degradation of CC chemokines by the chemokine decoy receptor D6 are determined by their N-terminal sequence. Savino B, et al. *J Biol Chem*, 2009 Sep 18. PMID 19632987. Significance of N-terminal proteolysis of CCL14a to activity on the chemokine receptors CCR1 and CCR5 and the human cytomegalovirus-encoded chemokine receptor US28. Richter R, et al. *J Immunol*, 2009 Jul 15. PMID 19553544.