

CDC2L5 Antibody (monoclonal) (M01)**Mouse monoclonal antibody raised against a full length recombinant CDC2L5.****Catalog # AT1460a****Specification**

CDC2L5 Antibody (monoclonal) (M01) - Product Information

Application	IF, WB
Primary Accession	Q14004
Other Accession	BC001274
Reactivity	Human
Host	mouse
Clonality	Monoclonal
Isotype	IgG1 kappa
Calculated MW	164923

CDC2L5 Antibody (monoclonal) (M01) - Additional Information**Gene ID** 8621**Other Names**

Cyclin-dependent kinase 13, CDC2-related protein kinase 5, Cell division cycle 2-like protein kinase 5, Cell division protein kinase 13, hCDK13, Cholinesterase-related cell division controller, CDK13, CDC2L, CDC2L5, CHED, KIAA1791

Target/Specificity

CDC2L5 (AAH01274, 1 a.a. ~ 324 a.a) full-length recombinant protein with GST tag. MW of the GST tag alone is 26 KDa.

Dilution

WB~~1:500~1000

Format

Clear, colorless solution in phosphate buffered saline, pH 7.2 .

Storage

Store at -20°C or lower. Aliquot to avoid repeated freezing and thawing.

Precautions

CDC2L5 Antibody (monoclonal) (M01) is for research use only and not for use in diagnostic or therapeutic procedures.

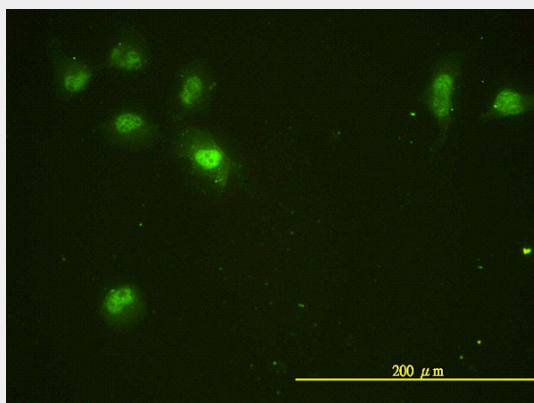
CDC2L5 Antibody (monoclonal) (M01) - Protocols

Provided below are standard protocols that you may find useful for product applications.

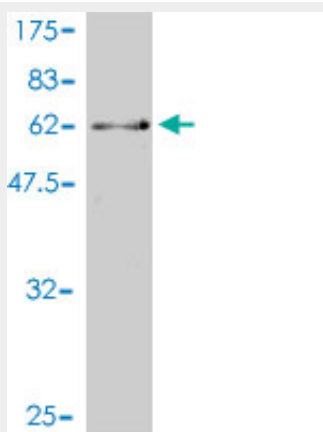
- [Western Blot](#)
- [Blocking Peptides](#)

- [Dot Blot](#)
- [Immunohistochemistry](#)
- [Immunofluorescence](#)
- [Immunoprecipitation](#)
- [Flow Cytometry](#)
- [Cell Culture](#)

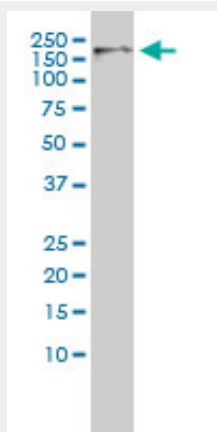
CDC2L5 Antibody (monoclonal) (M01) - Images



Immunofluorescence of monoclonal antibody to CDC2L5 on HeLa cell. [antibody concentration 10 ug/ml]



Antibody Reactive Against Recombinant Protein. Western Blot detection against Immunogen (61.38 KDa) .



CDC2L5 monoclonal antibody (M01), clone 1B3-1B11. Western Blot analysis of CDC2L5 expression in Hela S3 NE (Cat # AT1460a)

CDC2L5 Antibody (monoclonal) (M01) - Background

The protein encoded by this gene is a member of the cyclin-dependent serine/threonine protein kinase family. Members of this family are well known for their essential roles as master switches in cell cycle control. The exact function of this protein has not yet been determined, but it may play a role in mRNA processing and may be involved in regulation of hematopoiesis. Alternatively spliced transcript variants have been described.

CDC2L5 Antibody (monoclonal) (M01) - References

Cyclin-dependent kinases: a family portrait. Malumbres M, et al. Nat Cell Biol, 2009 Nov. PMID 19884882. Global, in vivo, and site-specific phosphorylation dynamics in signaling networks. Olsen JV, et al. Cell, 2006 Nov 3. PMID 17081983. A probability-based approach for high-throughput protein phosphorylation analysis and site localization. Beausoleil SA, et al. Nat Biotechnol, 2006 Oct. PMID 16964243. A systematic analysis of human CHMP protein interactions: additional MIT domain-containing proteins bind to multiple components of the human ESCRT III complex. Tsang HT, et al. Genomics, 2006 Sep. PMID 16730941. CDC2L5, a Cdk-like kinase with RS domain, interacts with the ASF/SF2-associated protein p32 and affects splicing in vivo. Even Y, et al. J Cell Biochem, 2006 Oct 15. PMID 16721827.