

CEBPE Antibody (monoclonal) (M01)

Mouse monoclonal antibody raised against a full length recombinant CEBPE.

Catalog # AT1490a

Specification

CEBPE Antibody (monoclonal) (M01) - Product Information

Application	WB
Primary Accession	Q15744
Other Accession	BC035797
Reactivity	Human
Host	mouse
Clonality	Monoclonal
Isotype	IgG2a Kappa
Calculated MW	30603

CEBPE Antibody (monoclonal) (M01) - Additional Information

Gene ID 1053

Other Names

CCAAT/enhancer-binding protein epsilon, C/EBP epsilon, CEBPE

Target/Specificity

CEBPE (AAH35797.2, 1 a.a. ~ 281 a.a) full-length recombinant protein with GST tag. MW of the GST tag alone is 26 KDa.

Dilution

WB~~1:500~1000

Format

Clear, colorless solution in phosphate buffered saline, pH 7.2 .

Storage

Store at -20°C or lower. Aliquot to avoid repeated freezing and thawing.

Precautions

CEBPE Antibody (monoclonal) (M01) is for research use only and not for use in diagnostic or therapeutic procedures.

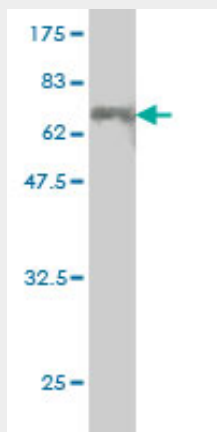
CEBPE Antibody (monoclonal) (M01) - Protocols

Provided below are standard protocols that you may find useful for product applications.

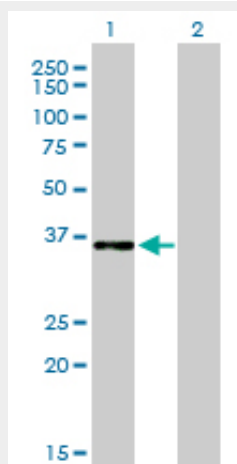
- [Western Blot](#)
- [Blocking Peptides](#)
- [Dot Blot](#)
- [Immunohistochemistry](#)

- [Immunofluorescence](#)
- [Immunoprecipitation](#)
- [Flow Cytometry](#)
- [Cell Culture](#)

CEBPE Antibody (monoclonal) (M01) - Images



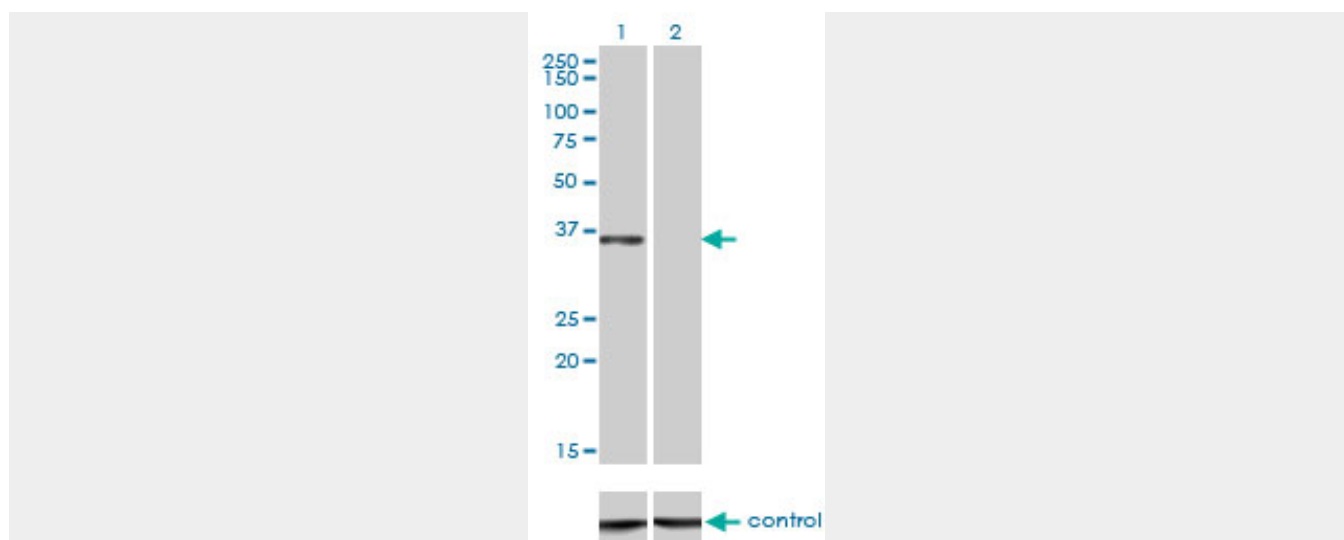
Antibody Reactive Against Recombinant Protein. Western Blot detection against Immunogen (56.65 KDa) .



Western Blot analysis of CEBPE expression in transfected 293T cell line by CEBPE monoclonal antibody (M01), clone 7A4.

Lane 1: CEBPE transfected lysate (30.6 KDa).

Lane 2: Non-transfected lysate.



Western blot analysis of CEBPE over-expressed 293 cell line, cotransfected with CEBPE Validated Chimera RNAi (Cat # AT1490a)

CEBPE Antibody (monoclonal) (M01) - Background

The protein encoded by this gene is a bZIP transcription factor which can bind as a homodimer to certain DNA regulatory regions. It can also form heterodimers with the related protein CEBP-delta. The encoded protein may be essential for terminal differentiation and functional maturation of committed granulocyte progenitor cells. Mutations in this gene have been associated with Specific Granule Deficiency, a rare congenital disorder. Multiple variants of this gene have been described, but the full-length nature of only one has been determined.

CEBPE Antibody (monoclonal) (M01) - References

Verification of the susceptibility loci on 7p12.2, 10q21.2, and 14q11.2 in precursor B-cell acute lymphoblastic leukemia of childhood. Prasad RB, et al. Blood, 2010 Mar 4. PMID 20042726. Loci on 7p12.2, 10q21.2 and 14q11.2 are associated with risk of childhood acute lymphoblastic leukemia. Papaemmanuil E, et al. Nat Genet, 2009 Sep. PMID 19684604. Inflammatory cytokine production by human neutrophils involves C/EBP transcription factors. Cloutier A, et al. J Immunol, 2009 Jan 1. PMID 19109189. Human C/EBP-epsilon activator and repressor isoforms differentially reprogram myeloid lineage commitment and differentiation. Bedi R, et al. Blood, 2009 Jan 8. PMID 18832658. C/EBPalpha and C/EBPvarepsilon induce the monocytic differentiation of myelomonocytic cells with the MLL-chimeric fusion gene. Matsushita H, et al. Oncogene, 2008 Dec 4. PMID 18776924.