

CLCA2 Antibody (monoclonal) (M01)
Mouse monoclonal antibody raised against a partial recombinant CLCA2.
Catalog # AT1549a

Specification

CLCA2 Antibody (monoclonal) (M01) - Product Information

| | |
|-------------------|---------------------------|
| Application | WB |
| Primary Accession | O9UQC9 |
| Other Accession | NM_006536 |
| Reactivity | Human |
| Host | mouse |
| Clonality | Monoclonal |
| Isotype | IgG2a Kappa |
| Calculated MW | 103941 |

CLCA2 Antibody (monoclonal) (M01) - Additional Information

Gene ID 9635

Other Names

Calcium-activated chloride channel regulator 2, 34--, Calcium-activated chloride channel family member 2, hCLCA2, Calcium-activated chloride channel protein 3, CaCC-3, hCaCC-3, Calcium-activated chloride channel regulator 2, 109 kDa form, Calcium-activated chloride channel regulator 2, 35 kDa form, CLCA2, CACC3

Target/Specificity

CLCA2 (NP_006527, 300 a.a. ~ 400 a.a) partial recombinant protein with GST tag. MW of the GST tag alone is 26 KDa.

Dilution

WB~~1:500~1000

Format

Clear, colorless solution in phosphate buffered saline, pH 7.2 .

Storage

Store at -20°C or lower. Aliquot to avoid repeated freezing and thawing.

Precautions

CLCA2 Antibody (monoclonal) (M01) is for research use only and not for use in diagnostic or therapeutic procedures.

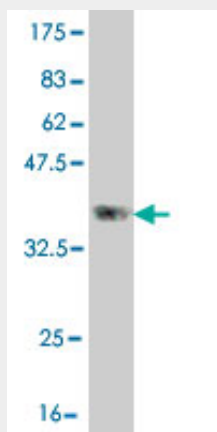
CLCA2 Antibody (monoclonal) (M01) - Protocols

Provided below are standard protocols that you may find useful for product applications.

- [Western Blot](#)

- [Blocking Peptides](#)
- [Dot Blot](#)
- [Immunohistochemistry](#)
- [Immunofluorescence](#)
- [Immunoprecipitation](#)
- [Flow Cytometry](#)
- [Cell Culture](#)

CLCA2 Antibody (monoclonal) (M01) - Images



Antibody Reactive Against Recombinant Protein. Western Blot detection against Immunogen (36.85 kDa) .

CLCA2 Antibody (monoclonal) (M01) - Background

The protein encoded by this gene belongs to the calcium sensitive chloride conductance protein family. To date, all members of this gene family map to the same site on chromosome 1p31-p22 and share high degrees of homology in size, sequence and predicted structure, but differ significantly in their tissue distributions. Since this protein is expressed predominantly in trachea and lung, it is suggested to play a role in the complex pathogenesis of cystic fibrosis. It may also serve as adhesion molecule for lung metastatic cancer cells, mediating vascular arrest and colonization, and furthermore, it has been implicated to act as a tumor suppressor gene for breast cancer.

CLCA2 Antibody (monoclonal) (M01) - References

Polymorphisms in innate immunity genes and risk of childhood leukemia. Han S, et al. Hum Immunol, 2010 Jul. PMID 20438785. Risk of meningioma and common variation in genes related to innate immunity. Rajaraman P, et al. Cancer Epidemiol Biomarkers Prev, 2010 May. PMID 20406964. hCLCA2 Is a p53-Inducible Inhibitor of Breast Cancer Cell Proliferation. Walia V, et al. Cancer Res, 2009 Aug 15. PMID 19654313. Common variation in genes related to innate immunity and risk of adult glioma. Rajaraman P, et al. Cancer Epidemiol Biomarkers Prev, 2009 May. PMID 19423540. Evaluating new candidate SNPs as low penetrance risk factors in sporadic breast cancer: a two-stage Spanish case-control study. Vega A, et al. Gynecol Oncol, 2009 Jan. PMID 18950845.