

**CRADD Antibody (monoclonal) (M01)****Mouse monoclonal antibody raised against a full length recombinant CRADD.****Catalog # AT1616a****Specification**

---

**CRADD Antibody (monoclonal) (M01) - Product Information**

Application	IF, WB, E
Primary Accession	<a href="#">P78560</a>
Other Accession	<a href="#">BC037905</a>
Reactivity	Human
Host	mouse
Clonality	Monoclonal
Isotype	IgG1 kappa
Calculated MW	22745

**CRADD Antibody (monoclonal) (M01) - Additional Information****Gene ID** 8738**Other Names**

Death domain-containing protein CRADD, Caspase and RIP adapter with death domain, RIP-associated protein with a death domain, CRADD, RAIDD

**Target/Specificity**

CRADD (AAH37905, 1 a.a. ~ 199 a.a) full-length recombinant protein with GST tag. MW of the GST tag alone is 26 KDa.

**Dilution**

WB~~1:500~1000

**Format**

Clear, colorless solution in phosphate buffered saline, pH 7.2 .

**Storage**

Store at -20°C or lower. Aliquot to avoid repeated freezing and thawing.

**Precautions**

CRADD Antibody (monoclonal) (M01) is for research use only and not for use in diagnostic or therapeutic procedures.

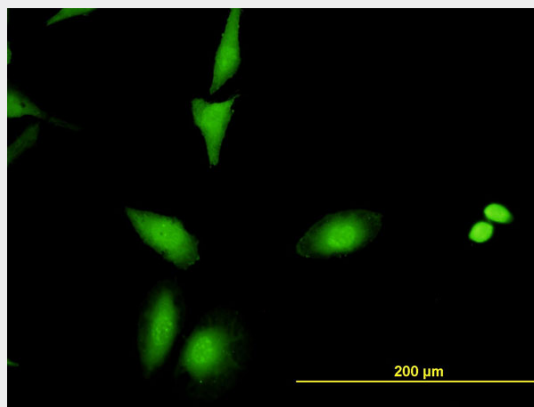
**CRADD Antibody (monoclonal) (M01) - Protocols**

Provided below are standard protocols that you may find useful for product applications.

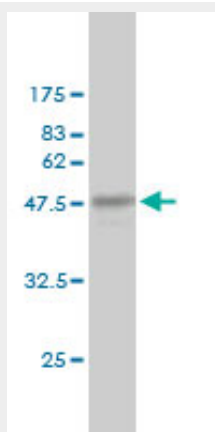
- [Western Blot](#)
- [Blocking Peptides](#)
- [Dot Blot](#)

- [Immunohistochemistry](#)
- [Immunofluorescence](#)
- [Immunoprecipitation](#)
- [Flow Cytometry](#)
- [Cell Culture](#)

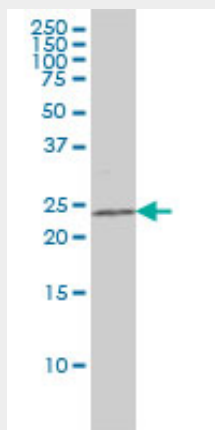
### CRADD Antibody (monoclonal) (M01) - Images



Immunofluorescence of monoclonal antibody to CRADD on HeLa cell. [antibody concentration 10 ug/ml]

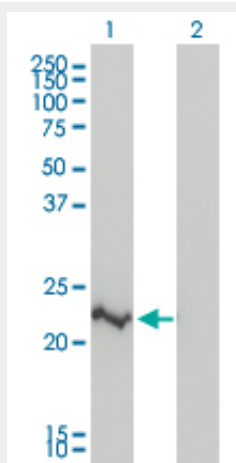


Antibody Reactive Against Recombinant Protein. Western Blot detection against Immunogen (47.63 KDa) .



CRADD monoclonal antibody (M01), clone 1F8 Western Blot analysis of CRADD expression in

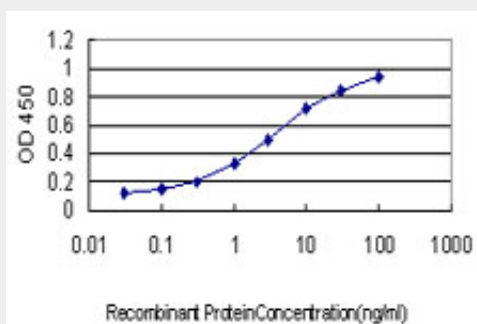
K-562 ( (Cat # AT1616a )



Western Blot analysis of CRADD expression in transfected 293T cell line by CRADD monoclonal antibody (M01), clone 1F8.

Lane 1: CRADD transfected lysate(23 KDa).

Lane 2: Non-transfected lysate.



Detection limit for recombinant GST tagged CRADD is approximately 0.1ng/ml as a capture antibody.

### CRADD Antibody (monoclonal) (M01) - Background

The protein encoded by this gene is a death domain (CARD/DD)-containing protein and has been shown to induce cell apoptosis. Through its CARD domain, this protein interacts with, and thus recruits, caspase 2/ICH1 to the cell death signal transduction complex that includes tumor necrosis factor receptor 1 (TNFR1A), RIPK1/RIP kinase, and numbers of other CARD domain-containing proteins.

### CRADD Antibody (monoclonal) (M01) - References

An approach based on a genome-wide association study reveals candidate loci for narcolepsy. Shimada M, et al. Hum Genet, 2010 Oct. PMID 20677014. The role of height-associated loci identified in genome wide association studies in the determination of pediatric stature. Zhao J, et al. BMC Med Genet, 2010 Jun 14. PMID 20546612. Identification and analysis of dominant negative mutants of RAIDD and PIDD. Jang TH, et al. Biochim Biophys Acta, 2010 Jul. PMID 20406701. New genetic associations detected in a host response study to hepatitis B vaccine. Davila S, et al. Genes Immun, 2010 Apr. PMID 20237496. PIDDosome expression and the role of caspase-2 activation for chemotherapy-induced apoptosis in RCCs. Heikaus S, et al. Cell Oncol, 2010. PMID 20208132.