

## CREB5 Antibody (monoclonal) (M01)

Mouse monoclonal antibody raised against a partial recombinant CREB5.

Catalog # AT1619a

### Specification

---

#### CREB5 Antibody (monoclonal) (M01) - Product Information

Application	IP, WB, E
Primary Accession	<a href="#">Q02930</a>
Other Accession	<a href="#">NM_001011666</a>
Reactivity	Human
Host	mouse
Clonality	Monoclonal
Isotype	IgG2a Kappa
Calculated MW	56918

#### CREB5 Antibody (monoclonal) (M01) - Additional Information

Gene ID 9586

##### Other Names

Cyclic AMP-responsive element-binding protein 5, CREB-5, cAMP-responsive element-binding protein 5, CRE-BPa, CREB5, CREBPA

##### Target/Specificity

CREB5 (NP\_001011666, 1 a.a. ~ 99 a.a) partial recombinant protein with GST tag. MW of the GST tag alone is 26 KDa.

##### Dilution

WB~~1:500~1000

##### Format

Clear, colorless solution in phosphate buffered saline, pH 7.2 .

##### Storage

Store at -20°C or lower. Aliquot to avoid repeated freezing and thawing.

##### Precautions

CREB5 Antibody (monoclonal) (M01) is for research use only and not for use in diagnostic or therapeutic procedures.

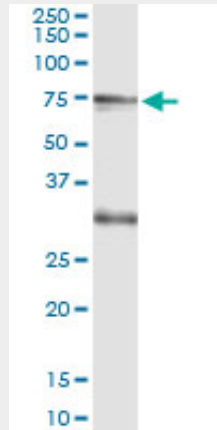
#### CREB5 Antibody (monoclonal) (M01) - Protocols

Provided below are standard protocols that you may find useful for product applications.

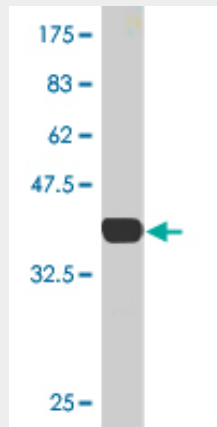
- [Western Blot](#)
- [Blocking Peptides](#)
- [Dot Blot](#)

- [Immunohistochemistry](#)
- [Immunofluorescence](#)
- [Immunoprecipitation](#)
- [Flow Cytometry](#)
- [Cell Culture](#)

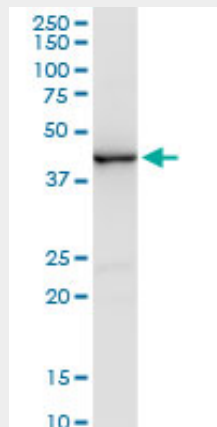
### CREB5 Antibody (monoclonal) (M01) - Images



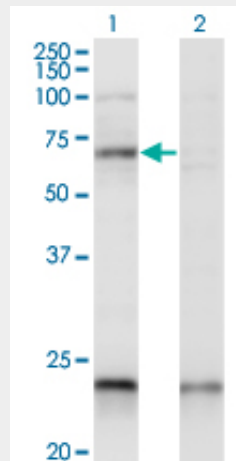
Immunoprecipitation of CREB5 transfected lysate using anti-CREB5 monoclonal antibody and Protein A Magnetic Bead ([U0007](#)), and immunoblotted with CREB5 MaxPab rabbit polyclonal antibody.



Antibody Reactive Against Recombinant Protein. Western Blot detection against Immunogen (36.63 kDa) .

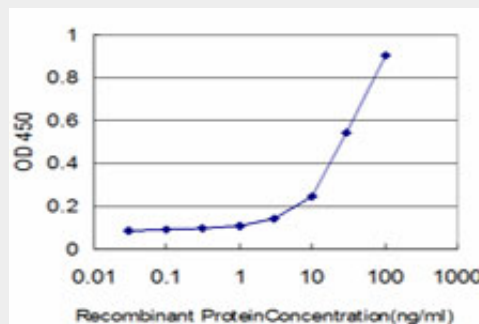


CREB5 monoclonal antibody (M01), clone 1E2. Western Blot analysis of CREB5 expression in human kidney.



Western Blot analysis of CREB5 expression in transfected 293T cell line by CREB5 monoclonal antibody (M01), clone 1E2.

Lane 1: CREB5 transfected lysate (Predicted MW: 56.9 KDa).  
Lane 2: Non-transfected lysate.



Detection limit for recombinant GST tagged CREB5 is approximately 3ng/ml as a capture antibody.

### CREB5 Antibody (monoclonal) (M01) - Background

The product of this gene belongs to the CRE (cAMP response element)-binding protein family. Members of this family contain zinc-finger and bZIP DNA-binding domains. The encoded protein specifically binds to CRE as a homodimer or a heterodimer with c-Jun or CRE-BP1, and functions as a CRE-dependent trans-activator. Alternatively spliced transcript variants encoding different isoforms have been identified.

### CREB5 Antibody (monoclonal) (M01) - References

Personalized smoking cessation: interactions between nicotine dose, dependence and quit-success genotype score. Rose JE, et al. Mol Med, 2010 Jul-Aug. PMID 20379614. Inherited genetic variant predisposes to aggressive but not indolent prostate cancer. Xu J, et al. Proc Natl Acad Sci U S A, 2010 Feb 2. PMID 20080650. Coeliac disease-associated risk variants in TNFAIP3 and REL implicate altered NF-kappaB signalling. Trynka G, et al. Gut, 2009 Aug. PMID 19240061. Molecular genetics of adult ADHD: converging evidence from genome-wide association and extended pedigree linkage studies. Lesch KP, et al. J Neural Transm, 2008 Nov. PMID 18839057. Molecular genetics of successful smoking cessation: convergent genome-wide association study results. Uhl GR, et al.

Arch Gen Psychiatry, 2008 Jun. PMID 18519826.