

**DCN Antibody (monoclonal) (M01)****Mouse monoclonal antibody raised against a full length recombinant DCN.****Catalog # AT1716a****Specification**

---

**DCN Antibody (monoclonal) (M01) - Product Information**

Application	WB, IHC, E
Primary Accession	<a href="#">P07585</a>
Other Accession	<a href="#">BC005322</a>
Reactivity	Human
Host	mouse
Clonality	Monoclonal
Isotype	IgG2b Kappa
Calculated MW	39747

**DCN Antibody (monoclonal) (M01) - Additional Information****Gene ID** 1634**Other Names**

Decorin, Bone proteoglycan II, PG-S2, PG40, DCN, SLRR1B

**Target/Specificity**

DCN (AAH05322, 1 a.a. ~ 359 a.a) full-length recombinant protein with GST tag. MW of the GST tag alone is 26 KDa.

**Dilution**

WB~~1:500~1000

**Format**

Clear, colorless solution in phosphate buffered saline, pH 7.2 .

**Storage**

Store at -20°C or lower. Aliquot to avoid repeated freezing and thawing.

**Precautions**

DCN Antibody (monoclonal) (M01) is for research use only and not for use in diagnostic or therapeutic procedures.

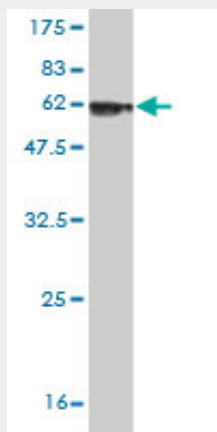
**DCN Antibody (monoclonal) (M01) - Protocols**

Provided below are standard protocols that you may find useful for product applications.

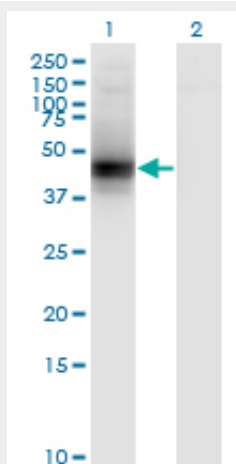
- [Western Blot](#)
- [Blocking Peptides](#)
- [Dot Blot](#)
- [Immunohistochemistry](#)

- [Immunofluorescence](#)
- [Immunoprecipitation](#)
- [Flow Cytometry](#)
- [Cell Culture](#)

#### DCN Antibody (monoclonal) (M01) - Images



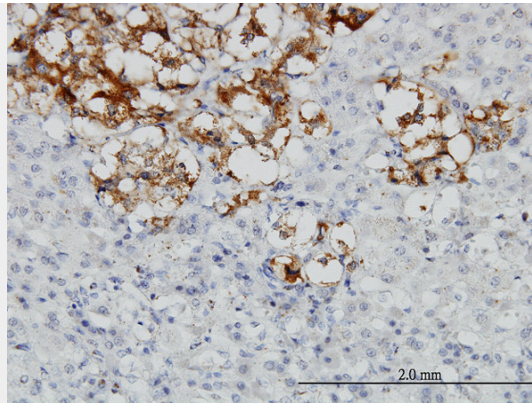
Antibody Reactive Against Recombinant Protein. Western Blot detection against Immunogen (65.23 KDa) .



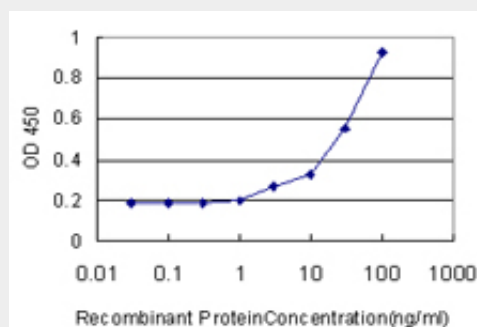
Western Blot analysis of DCN expression in transfected 293T cell line by DCN monoclonal antibody (M01), clone 3H4-1F4.

Lane 1: DCN transfected lysate (Predicted MW: 39.7 KDa).

Lane 2: Non-transfected lysate.



Immunoperoxidase of monoclonal antibody to DCN on formalin-fixed paraffin-embedded human adrenal gland. [antibody concentration 3 ug/ml]



Detection limit for recombinant GST tagged DCN is approximately 1ng/ml as a capture antibody.

### DCN Antibody (monoclonal) (M01) - Background

The protein encoded by this gene is a small cellular or pericellular matrix proteoglycan that is closely related in structure to biglycan protein. The encoded protein and biglycan are thought to be the result of a gene duplication. This protein is a component of connective tissue, binds to type I collagen fibrils, and plays a role in matrix assembly. It contains one attached glycosaminoglycan chain. This protein is capable of suppressing the growth of various tumor cell lines. There are multiple alternatively spliced transcript variants known for this gene. This gene is a candidate gene for Marfan syndrome.

### DCN Antibody (monoclonal) (M01) - References

Evaluation of candidate stromal epithelial cross-talk genes identifies association between risk of serous ovarian cancer and TERT, a cancer susceptibility hot-spot. Johnatty SE, et al. PLoS Genet, 2010 Jul 8. PMID 20628624. Variation at the NFATC2 Locus Increases the Risk of Thiazolinedione-Induced Edema in the Diabetes REduction Assessment with ramipril and rosiglitazone Medication (DREAM) Study. Bailey SD, et al. Diabetes Care, 2010 Jul 13. PMID 20628086. Decorin expression is decreased in human idiopathic fetal growth restriction. Swan BC, et al. Reprod Fertil Dev, 2010. PMID 20591329. Decorin transfection suppresses profibrogenic genes and myofibroblast formation in human corneal fibroblasts. Mohan RR, et al. Exp Eye Res, 2010 Aug. PMID 20546727. Candidate gene study to investigate the genetic determinants of normal variation in central corneal thickness. Dimasi DP, et al. Mol Vis, 2010 Mar 31. PMID 20360993.