

**EHD2 Antibody (monoclonal) (M01)****Mouse monoclonal antibody raised against a partial recombinant EHD2.****Catalog # AT1866a****Specification**

---

**EHD2 Antibody (monoclonal) (M01) - Product Information**

Application	IF, WB, E
Primary Accession	<a href="#">O9NZN4</a>
Other Accession	<a href="#">NM_014601</a>
Reactivity	Human
Host	mouse
Clonality	Monoclonal
Isotype	IgG1 Kappa
Calculated MW	61161

**EHD2 Antibody (monoclonal) (M01) - Additional Information****Gene ID** 30846**Other Names**

EH domain-containing protein 2, PAST homolog 2, EHD2, PAST2

**Target/Specificity**

EHD2 (NP\_055416, 365 a.a. ~ 427 a.a) partial recombinant protein with GST tag. MW of the GST tag alone is 26 KDa.

**Dilution**

WB~~1:500~1000

**Format**

Clear, colorless solution in phosphate buffered saline, pH 7.2 .

**Storage**

Store at -20°C or lower. Aliquot to avoid repeated freezing and thawing.

**Precautions**

EHD2 Antibody (monoclonal) (M01) is for research use only and not for use in diagnostic or therapeutic procedures.

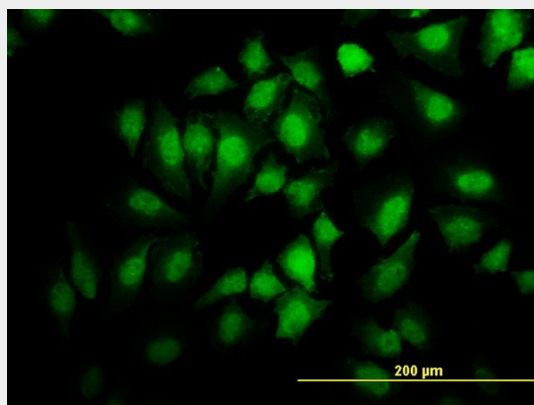
**EHD2 Antibody (monoclonal) (M01) - Protocols**

Provided below are standard protocols that you may find useful for product applications.

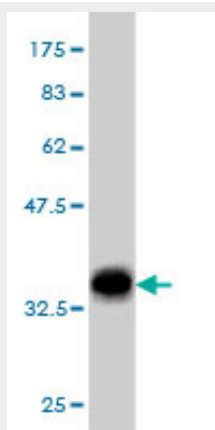
- [Western Blot](#)
- [Blocking Peptides](#)
- [Dot Blot](#)
- [Immunohistochemistry](#)

- [Immunofluorescence](#)
- [Immunoprecipitation](#)
- [Flow Cytometry](#)
- [Cell Culture](#)

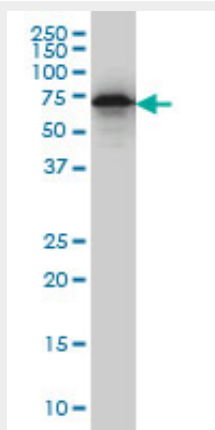
## EHD2 Antibody (monoclonal) (M01) - Images



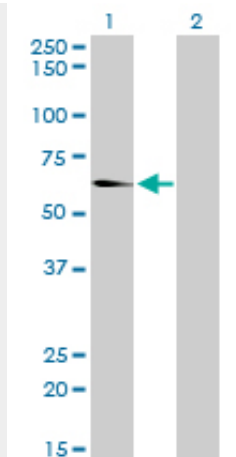
Immunofluorescence of monoclonal antibody to EHD2 on HeLa cell. [antibody concentration 10 ug/ml]



Antibody Reactive Against Recombinant Protein. Western Blot detection against Immunogen (32.67 KDa) .



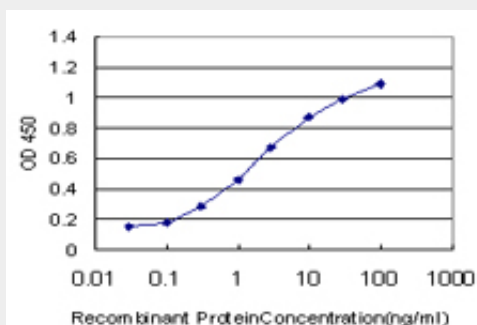
EHD2 monoclonal antibody (M01), clone 2D8 Western Blot analysis of EHD2 expression in HeLa (Cat # AT1866a )



Western Blot analysis of EHD2 expression in transfected 293T cell line by EHD2 monoclonal antibody (M01), clone 2D8.

Lane 1: EHD2 transfected lysate(61.2 KDa).

Lane 2: Non-transfected lysate.



Detection limit for recombinant GST tagged EHD2 is approximately 0.03ng/ml as a capture antibody.

### EHD2 Antibody (monoclonal) (M01) - Background

This gene encodes a member of the EH domain-containing protein family. These proteins are characterized by a C-terminal EF-hand domain, a nucleotide-binding consensus site at the N terminus and a bipartite nuclear localization signal. The encoded protein interacts with the actin cytoskeleton through an N-terminal domain and also binds to an EH domain-binding protein through the C-terminal EH domain. This interaction appears to connect clathrin-dependent endocytosis to actin, suggesting that this gene product participates in the endocytic pathway.

### EHD2 Antibody (monoclonal) (M01) - References

EH domain proteins regulate cardiac membrane protein targeting. Gudmundsson H, et al. Circ Res, 2010 Jul 9. PMID 20489164. Architectural and mechanistic insights into an EHD ATPase involved in membrane remodelling. Daumke O, et al. Nature, 2007 Oct 3. PMID 17914359. Diversification of transcriptional modulation: large-scale identification and characterization of putative alternative promoters of human genes. Kimura K, et al. Genome Res, 2006 Jan. PMID 16344560. C-terminal EH-domain-containing proteins: consensus for a role in endocytic trafficking, EH? Naslavsky N, et al. J Cell Sci, 2005 Sep 15. PMID 16155252. The status, quality, and expansion of the NIH full-length cDNA project: the Mammalian Gene Collection (MGC). Gerhard DS, et al. Genome Res, 2004 Oct. PMID 15489334.