

**EIF4G1 Antibody (monoclonal) (M01)****Mouse monoclonal antibody raised against a partial recombinant EIF4G1.****Catalog # AT1880a****Specification**

---

**EIF4G1 Antibody (monoclonal) (M01) - Product Information**

Application	WB, E
Primary Accession	<a href="#">Q04637</a>
Other Accession	<a href="#">NM_182917</a>
Reactivity	Human, Mouse
Host	mouse
Clonality	Monoclonal
Isotype	IgG2a Kappa
Calculated MW	175491

**EIF4G1 Antibody (monoclonal) (M01) - Additional Information****Gene ID** 1981**Other Names**

Eukaryotic translation initiation factor 4 gamma 1, eIF-4-gamma 1, eIF-4G 1, eIF-4G1, p220, EIF4G1, EIF4F, EIF4G, EIF4GI

**Target/Specificity**

EIF4G1 (NP\_886553, 1500 a.a. ~ 1599 a.a) partial recombinant protein with GST tag. MW of the GST tag alone is 26 KDa.

**Dilution**

WB~~1:500~1000

**Format**

Clear, colorless solution in phosphate buffered saline, pH 7.2 .

**Storage**

Store at -20°C or lower. Aliquot to avoid repeated freezing and thawing.

**Precautions**

EIF4G1 Antibody (monoclonal) (M01) is for research use only and not for use in diagnostic or therapeutic procedures.

**EIF4G1 Antibody (monoclonal) (M01) - Protocols**

Provided below are standard protocols that you may find useful for product applications.

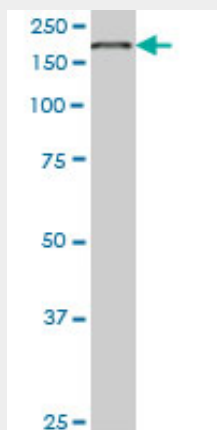
- [Western Blot](#)
- [Blocking Peptides](#)
- [Dot Blot](#)

- [Immunohistochemistry](#)
- [Immunofluorescence](#)
- [Immunoprecipitation](#)
- [Flow Cytometry](#)
- [Cell Culture](#)

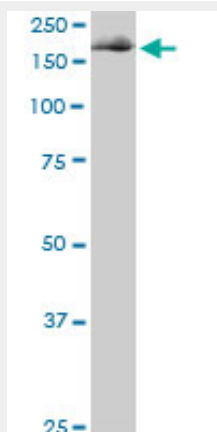
#### EIF4G1 Antibody (monoclonal) (M01) - Images



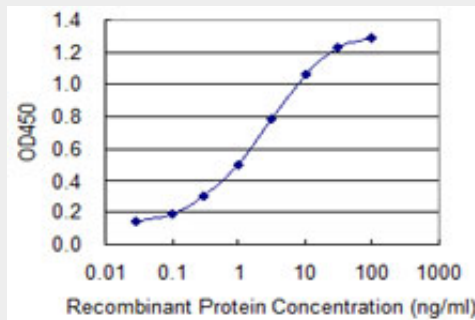
Antibody Reactive Against Recombinant Protein. Western Blot detection against Immunogen (36.74 kDa) .



EIF4G1 monoclonal antibody (M01), clone 3A10. Western Blot analysis of EIF4G1 expression in IMR-32 ( (Cat # AT1880a )



EIF4G1 monoclonal antibody (M01), clone 3A10. Western Blot analysis of EIF4G1 expression in NIH/3T3((Cat # AT1880a )



Detection limit for recombinant GST tagged EIF4G1 is 0.03 ng/ml as a capture antibody.

### EIF4G1 Antibody (monoclonal) (M01) - Background

The protein encoded by this gene is a component of the multi-subunit protein complex EIF4F. This complex facilitates the recruitment of mRNA to the ribosome, which is a rate-limiting step during the initiation phase of protein synthesis. The recognition of the mRNA cap and the ATP-dependent unwinding of 5'-terminal secondary structure is catalyzed by factors in this complex. The subunit encoded by this gene is a large scaffolding protein that contains binding sites for other members of the EIF4F complex. A domain at its N-terminus can also interact with the poly(A)-binding protein, which may mediate the circularization of mRNA during translation. Alternative splicing results in multiple transcript variants, some of which are derived from alternative promoter usage.

### EIF4G1 Antibody (monoclonal) (M01) - References

Over-expression of eukaryotic translation initiation factor 4 gamma 1 correlates with tumor progression and poor prognosis in nasopharyngeal carcinoma. Tu L, et al. Mol Cancer, 2010 Apr 16. PMID 20398343. Nuclear assortment of eIF4E coincides with shut-off of host protein synthesis upon poliovirus infection. Sukarieh R, et al. J Gen Virol, 2010 May. PMID 20053821. NAD(P)H quinone-oxydoreductase 1 protects eukaryotic translation initiation factor 4G1 from degradation by the proteasome. Alard A, et al. Mol Cell Biol, 2010 Feb. PMID 20028737. HIV- 1 protease inhibits Cap- and poly(A)-dependent translation upon eIF4G1 and PABP cleavage. Castell? A, et al. PLoS One, 2009 Nov 24. PMID 19956697. The Hsp90 inhibitor geldanamycin abrogates colocalization of eIF4E and eIF4E-transporter into stress granules and association of eIF4E with eIF4G. Suzuki Y, et al. J Biol Chem, 2009 Dec 18. PMID 19850929.