

# Neurosciences Antibodies



# Abcepta: a leader in Neurosciences antibodies

Neurosciences are impacted by a multitude of cellular processes and mechanisms, from apoptosis, autophagy, cell signaling, and cell development & differentiation to protein modification. The empirical methodologies employed by neuroscientists have been enormously expanded, from biochemical and genetic analyses of the dynamics of individual nerve cells and their molecular constituents to imaging of perceptual and motor tasks in the brain. With unsurpassed production capabilities and flexibility, Abcepta is proud to be your partner in Neurosciences antibodies.

Abcepta antibodies cover targets for an expansive range of Neurosciences research topics; from mechanisms such as neurogenesis (Neurogenin3), differentiation (Hash1, Nestin), and synapse development (ubiquitination) to neurodegenerative diseases such as Alzheimer's (APBB1), Parkinson's (PARK8, PINK1) and ion channel proteins associated with psychiatric disorders such as schizophrenia.

The products detailed in this brochure are only a few examples of the primary antibody solutions Abcepta can offer you. For an extensive list of our products, visit our website at [www.abcepta.com](http://www.abcepta.com).

## Table of Contents

- 4 Neural Chaperone Overview
- 4 Parkinson's Genes & Loci

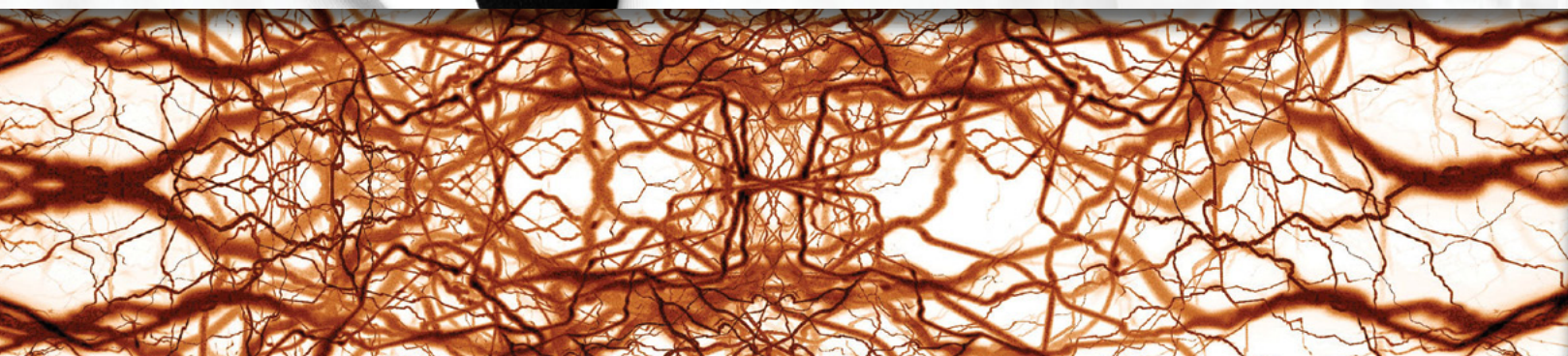
## Product Focus

- 5 Featured Neurosciences Products
- 6 Alzheimer's Disease Antibodies
- 7 Parkinson's Disease Antibodies
- 8 Neurogenesis Antibodies
- 8 Neurotransmitter Antibodies

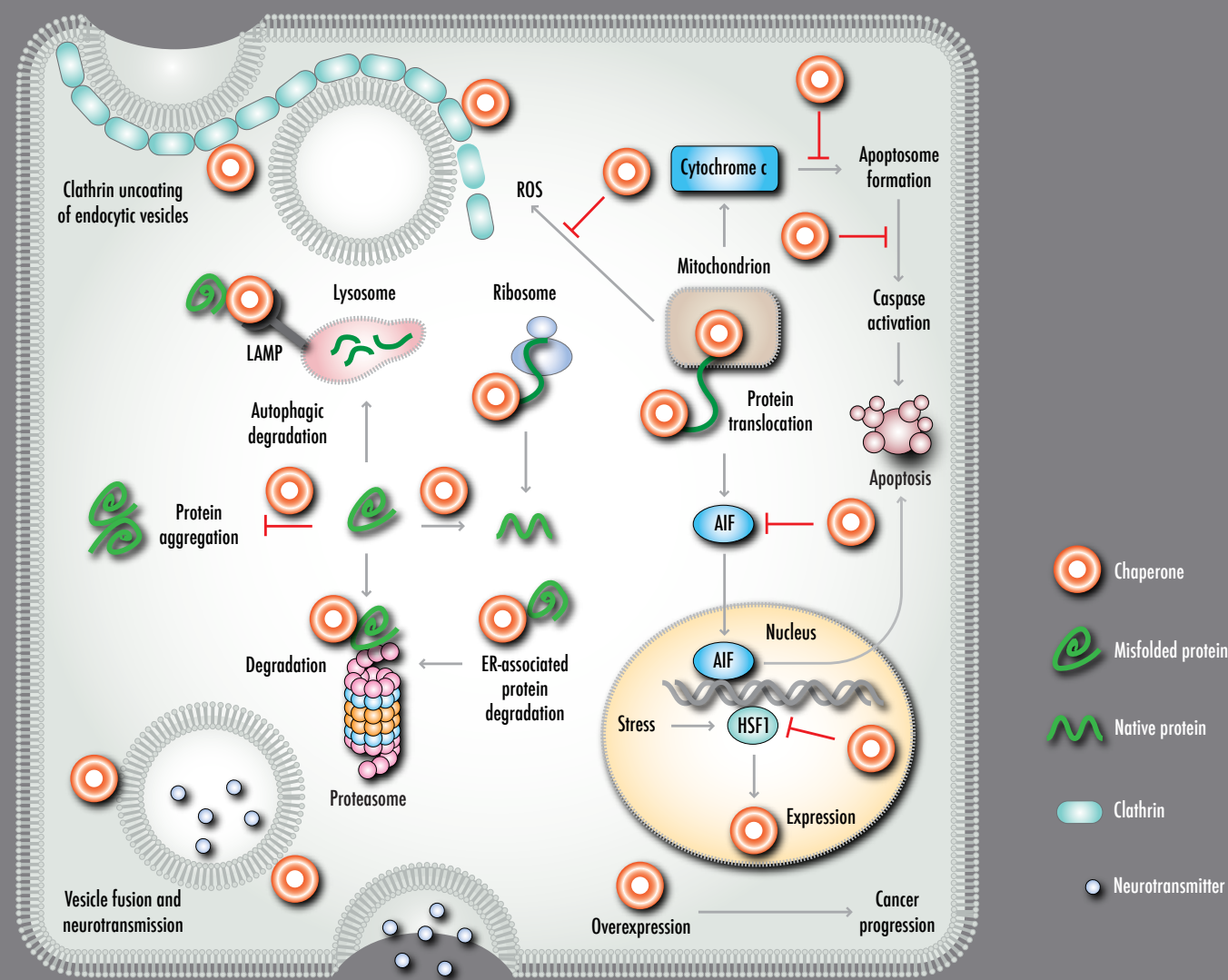
## 9-12 Additional Neurosciences Antibodies

- 13 Zebrafish Neurosciences

- 13 Legends



## Neural Chaperone Overview



**Role of molecular chaperones in cellular processes.** Molecular chaperones facilitate protein folding and prevent protein aggregation. They also regulate autophagy, vesicle fusion, signal transduction, apoptosis, and proteasomal degradation. **AIF**, apoptosis inducing factor; **ER**, endoplasmic reticulum; **HSF1**, heat shock transcription factor 1; **LAMP**, lysosomal-associated membrane protein; **ROS**, reactive oxygen species. (1)

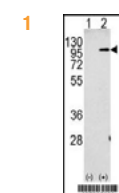
The schematic above is from the Abcepta Neural Chaperones Survey wall chart. Request a FREE copy at [www.abcepta.com](http://www.abcepta.com).

1. Muchowski PJ and Wacker JL. (2005) Modulation of neurodegeneration by molecular chaperones. *Nat Rev Neurosci*. 6(1), pp. 11-22.

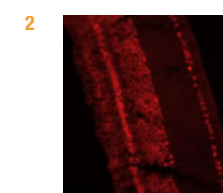
## Featured Neurosciences Products

Abcepta has one of the most extensive collections of Neurosciences antibodies. From neurodegenerative diseases Alzheimer's (APP) and Parkinson's (PARK8) to key processes such as neurogenesis (Neurogenin3) and neurotransmitters, Abcepta is your partner in Neurosciences research.

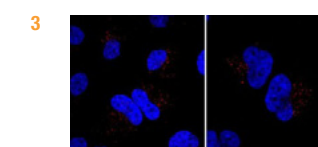
CAT. #	ANTIBODY	SP	ISO	VALID	SPEC
1	AP6306a APP (N-term)	Rb	plg	WB,IHC	H,M
	AP6103a BACE1C (Center)	Rb	plg	WB,IHC,IP,E	H,M,R
2	AP6329f CLC4 (C-term)	Rb	plg	WB,IHC,IF,E	H,M
3	AP2172a MIB (N-term)	Rb	plg	WB,IHC,FC,E	H
4	AP2024a Neurogenin3 (N-term)	Rb	plg	WB,IHC,FC,E	H,M
	AP6407a Park7 (DJ-1) (N-term)	Rb	plg	WB,IF,E	H
5	AM6406a PINK1 (Ascites)	M	mlg	WB,IF,E	H,M
	AP1202b PRDM2 (RIZ1)	Rb	plg	WB,IF,E	H,M
6	AP6231a PSEN1 (C-term)	Rb	plg	WB,IF,E	H



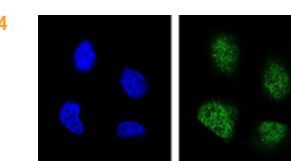
Western blot of 293 cell lysates either nontransfected (Lane 1) or transiently transfected with the APP gene (Lane 2) using APP Antibody.



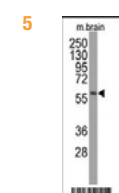
IF analysis of retinal tissue using CLC4 antibody.



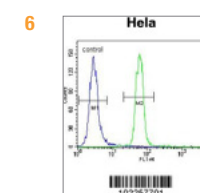
IF analysis of HeLa cells using MIB antibody.



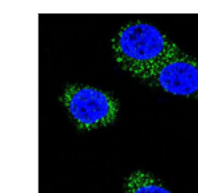
IF analysis of NCI-H460 cells using Neurogenin3 antibody.



Western blot of mouse brain tissue lysate using Pink1 antibody.



FC analysis of HeLa cells using PSEN1 antibody.



IF analysis of MDA-MB435 cells using PSEN1 antibody.

## Alzheimer's Antibodies

Alzheimer's disease (AD), is the most common form of dementia. Although AD develops differently for every individual, there are many common symptoms. Early symptoms are often mistakenly thought to be 'age-related' concerns or manifestations of stress. In the early stages, the most common symptom is difficulty in remembering recent events. When AD is suspected, the diagnosis is usually confirmed with tests that evaluate behavior and thinking abilities, often followed by a brain scan if available. Proteins such as amyloid precursor protein (APP) and presenilins 1 and 2 play a major role in development of the disease.

Abcepta has a wide selection of Alzheimer's antibody products. View our list on the side or visit the Abcepta website to search for your antibody of interest.

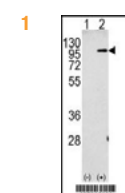
CAT. #	ANTIBODY	SP	ISO	VALID	SPEC		
<b>1</b>	AP6306a	APP (N-term)	Rb	plg	WB,IHC,FC,E	H,M	
	AP7774a	BACE (S498)	Rb	plg	WB,E	H,M	
	AP7774b	BACE1 (N-term)	Rb	plg	WB,IHC,E	H,M	
	AP6102a	BACE1B (Center)	Rb	plg	WB,IHC,E	H,M	
	AP6103a	BACE1C (Center)	Rb	plg	WB,IHC,FC,E	H	
	AP6104a	BACE1D (Center)	Rb	plg	WB,IHC,FC,E	H	
<b>2</b>	AP6121a	BACE2 (Center)	Rb	plg	WB,FC,E	H	
	AP6105a	BACE2B (C-term)	Rb	plg	WB,IHC,E	H	
	AP6106a	BACE2C (C-term)	Rb	plg	WB,IHC,E	H	
	<b>2</b>	AP7563c	CASP3 (Center)	Rb	plg	WB,IHC,FC,E	H
		AP7743b	CDK5R1 (p35) (C-term)	Rb	plg	WB,IHC,E	H
	AP1571a	KChIP1 (N-term)	Rb	plg	WB,IHC,E	H,M	
<b>3</b>	AP1572a	KChIP3 (N-term M1)	Rb	plg	WB,IHC,IFE	H,M	
	AP1425c	MAPT (S720)	Rb	plg	WB,IHC	H	
	AP7274c	PAT1(APPBP2) (Center)	Rb	plg	WB,E	H	
	AP6301b	PEN2 (Center P45)	Rb	plg	WB,E	H	
	AP2179a	PLIC1 (N-term)	Rb	plg	WB,IHC,E	H,M	
	AP6231a	PSEN1 (C-term)	Rb	plg	WB,IHC,IF,FC,E	H,M	
	AP6304a	PSN1 (C-term)	Rb	plg	WB,E	H	
	AP6304b	PSN1/2 (C-term)	Rb	plg	WB,IHC,E	H	
	AP6305a	PSN2 (C-term)	Rb	plg	WB,IFE	H,M	
	AP6304c	PSN2/1 (N-term)	Rb	plg	WB,IFE	H,M	
<b>4</b>	AP2712a	Sema5a (N-term)	Rb	plg	WB,E	H,M	
	<b>5</b>	AP2040b	TAU (C-term)	Rb	plg	WB,IHC,IFE	H
AP1228a		Ubiquitin (N-term)	Rb	plg	WB,IHC,E	H	

## Parkinson's Antibodies

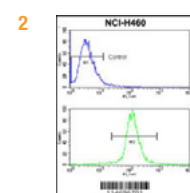
Parkinson's disease (also known as Parkinson disease, Parkinson's, idiopathic parkinsonism, primary parkinsonism, PD, or paralysis agitans) is a degenerative disorder of the central nervous system. The motor symptoms of Parkinson's disease result from the death of dopamine-generating cells in the substantia nigra, a region of the midbrain, the cause of this cell death remaining unknown. Early in the course of the disease, the most obvious symptoms are movement-related, these include shaking, rigidity, slowness of movement, and difficulty with walking and gait. Later, cognitive and behavioral problems may arise, with dementia commonly occurring in the advanced stages of the disease.

A variety of genes and proteins play an important role in the disease. SNCA, Parkin, Pink1, LRRK2, plus many more, contribute to the development of Parkinson's disease. For a complete listing of Abcepta's Parkinson's disease antibodies and related products, visit our website.

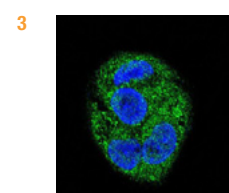
CAT. #	ANTIBODY	SP	ISO	VALID	SPEC	
AP6401b	Alpha-synuclein (C-term)	Rb	plg	WB,IHC,E	H	
<b>1</b>	AP6413a	CHIP (STUB1) (N-term)	Rb	plg	WB,IHC,E	H,M
	AP6417a	Drosophila DJ-1B (N-term)	Rb	plg	WB,E	D
AP6415a	Drosophila PARK6 (N-term)	Rb	plg	WB,E	D	
AP6414a	Drosophila Parkin (N-term)	Rb	plg	WB,E	D	
<b>2</b>	AP6412a	NURR1 (N-term)	Rb	plg	WB,IHC,IFE	H
<b>3</b>	AP6402b	PARK2 (PARKIN) (C-term)	Rb	plg	WB,IHC,FC,E	H,M
	AP6406a	PARK6 (PINK1) (N-term T133)	Rb	plg	WB,IHC,E	H,M
AP6407a	Park7 (DJ-1) (N-term)	Rb	plg	WB,IFE	H,M	
AM7099a	PARK8 (LRRK2)	M	mlgG1	WB,E	H,M	
AM7099b	PARK8 (LRRK2)	M	mlgG1	WB,E	H,M	
<b>4</b>	AP7099h	PARK8 (LRRK2) (L955)	Rb	plg	WB,IFE	H,M
	AM6406a	PINK1 (Ascites)	M	mlgG	WB, IHC, E	H,M
	AP2179a	PLIC1 (N-term)	Rb	plg	WB,IHC,E	H,M
AP6403a	SFXN5 (N-term)	Rb	plg	WB,IHC,E	M	



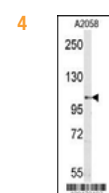
Western blot of 293 cell lysates either nontransfected (Lane 1) or transiently transfected with the APP gene (Lane 2) using APP Antibody.



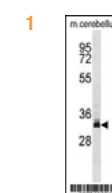
FC analysis of NCI-H460 cells using the CASP3 antibody.



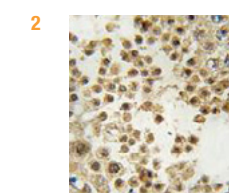
IF analysis of HepG2 cells using the KChIP3 antibody.



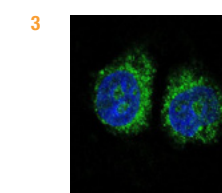
Western blot analysis of A2058 cells using the Sema5a antibody.



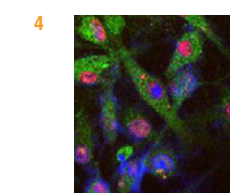
WB analysis of mouse cerebellum tissue lysates using the STUB1 antibody.



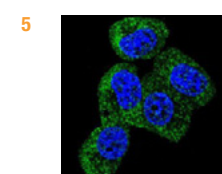
IHC analysis of human testis tissue stained with the Park2 antibody.



IF analysis of HeLa cells using the NURR1 antibody.



IF analysis of SY5Y cells using the PARK8 antibody.



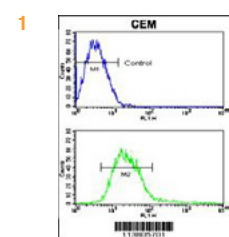
IF analysis of MCF-7 cells using the TAU antibody.

## Neurogenesis Antibodies

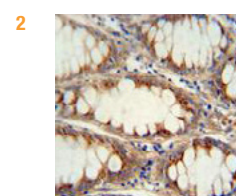
Neurogenesis is the process by which neurons develop from progenitor cells and neuronal stem cells. Disruptions in neurogenesis are implicated in a large number of pathologies.

Abcepta has a large selection of antibodies against major neurogenesis proteins. Visit our website for a full listing.

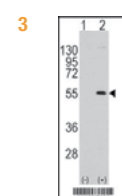
CAT. #	ANTIBODY	SP	ISO	VALID	SPEC
1	AP1492a ADAM17 (N-term)	Rb	plg	WB,FC,E	H
	AP2018b MAP2 (C-term)	Rb	plg	WB,IHC,E	H
	AP2021b NeuroD1 (C-term)	Rb	plg	WB,E	H,M
	AP2022a NeuroG1 (N-term)	Rb	plg	WB,E	H
	AP2023b Neurogenin2 (C-term)	Rb	plg	WB,E	H,M
2	AP2024a Neurogenin3 (N-term)	Rb	plg	WB,IHC,IFE	H,M
	AP2061a GDF11 (N-term)	Rb	plg	WB,E	H
3	AP6285a MEF2C (S387)	Rb	plg	WB,IHC,E	H
	AP7126a DCAMKL2 (N-term)	Rb	plg	WB,E	H
	AP7219b DCAMKL1 (N-term)	Rb	plg	WB,IHC,IFE	H,M
4	AP7437a ADAM9 (N-term)	Rb	plg	WB,FC,E	H,M
	AP7857b PSIP2 (C-term)	Rb	plg	WB,E	H



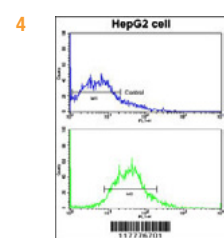
FC analysis of CEM cells using the ADAM17 antibody.



IHC analysis of human large intestine tissue stained with Neurogenin3 antibody.



Western blot of 293 cell lysates either nontransfected (Lane 1) or transiently transfected with the MEF2C gene (Lane 2) using MEF2C Antibody.

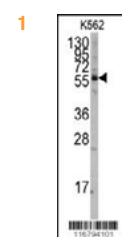


FC analysis of HepG2 cells using the ADAM9 antibody.

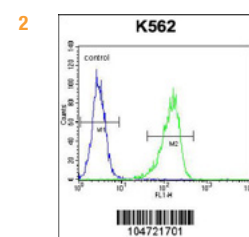
## Neurotransmitter Antibodies

Neurotransmitters are endogenous chemicals that transmit signals from a neuron to a target cell across a synapse. They are released into and diffuse across the synaptic cleft, where they bind to specific receptors in the membrane on the postsynaptic side of the synapse. Abcepta possesses an expansive portfolio of antibodies dedicated to neurotransmitter research. The full list can be consulted on our website.

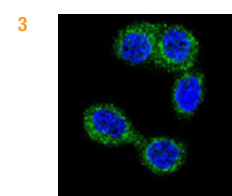
CAT. #	ANTIBODY	SP	ISO	VALID	SPEC
1	AP7853b ACHE (C-term)	Rb	plg	WB,IHC,FC,E	H
	AP1468b ALDH3A2 (C-term)	Rb	plg	WB,E	H
	AP1570b Calmodulin (C-term)	Rb	plg	WB,IHC,E	H
	AP7208a CAMK2 delta like (C-term)	Rb	plg	WB,IHC,E	H,M, Pr,R
	AP7210a CAMK2 gamma (C-term)	Rb	plg	WB,IHC,E	H
	AP7703a FAK2 (N-term)	Rb	plg	WB,IHC,E	H,M
2	AP1642a GPRC1F (C-term)	Rb	plg	WB,IHC,FC,E	H
	AP1640a GPRC1G (C-term)	Rb	plg	WB,IHC,E	H
3	AP1442a HNMT (N-term)	Rb	plg	WB,IHC,IFE	H
	AP2607b PAPSS1 (C-term A607)	Rb	plg	WB,E	H
	AP7167a PDXK (C-term)	Rb	plg	WB,IHC,E	H
	AP1565b Recoverin (C-term)	Rb	plg	WB,IHC,E	H
	AP7597d RIMS2 (S427)	Rb	plg	WB,E	H
	AP2608a SULT1C2 (N-term)	Rb	plg	WB,E	H
	AP2603b SULT2A (C-term)	Rb	plg	WB,E	H,M
4	AP2604b SULT2B1a/b (C-term)	Rb	plg	WB,E	H
	AP2610a SULT4A1a/b (N-term)	Rb	plg	WB,E	H,M



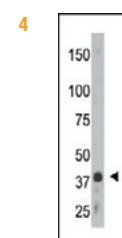
Western blot analysis in K562 cells using the ACHE antibodies



FC analysis of K562 cells using the GPRC1F antibody.



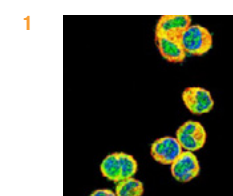
IF analysis of HeLa cells using the HNMT1 antibody.



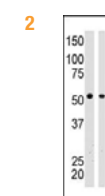
Western blot analysis in human placenta tissue lysate using the SULT2B1a/b antibodies.

## Additional Neurosciences Antibodies

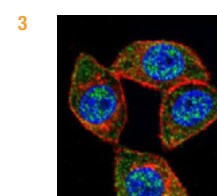
CAT. #	ANTIBODY	SP	ISO	VALID	SPEC
	AP7100d AATK (Center)	Rb	plg	WB,IHC,E	H
	AP7091b ADK (C-term)	Rb	plg	WB,IHC,E	H
	AP7141d AKT1 (S246)	Rb	plg	WB,IHC,E	H,M
1	AP7141a AKT1 (N-term)	Rb	plg	WB,IHC,IF,FC,E	H
	AP1472a ALDH5A1 (N-term)	Rb	plg	WB,IHC,FC,E	H
	AP2736b ALDOC (C-term)	Rb	plg	WB,IHC,E	H
	AP7600c ALK (Center)	Rb	plg	WB,IHC,E	H
	AP1826a AMBRA1 (N-term)	Rb	plg	WB,IHC,E	H
	AP6119a APBB1 (Center)	Rb	plg	WB,IHC,E	H,M
	AP6306a APP (N-term)	Rb	plg	WB,IHC,FC,E	H,M
	AP2508a ARNT/ARNT2	Rb	plg	WB,IHC,E	H
	AP7002a Aurora-A (N-term E107)	Rb	plg	WB,IHC,E	H
2	AP8174a BAIAP2 (C-term)	Rb	plg	WB,IHC,E	H
	AP7112a BCKDK (Center)	Rb	plg	WB,IHC,E	H
	AP1305a Bcl-w (BH3 Domain Specific)	Rb	plg	WB,IHC,E	H,M
	AP1308a Bim (BH3 Domain Specific)	Rb	plg	WB,IHC,E	H
	AP1714a Bmp3 (N-term)	Rb	plg	WB,IHC,E	H
3	AP7810c BRAF (Center)	Rb	plg	WB,IHC,IF,FC,E	H
	AP1493b BTBD14B (C-term)	Rb	plg	WB,E	H,M
	AP7205a CAMK1 (C-term)	Rb	plg	WB,IHC,E	H,M
	AP7253b CAMK1G (C-term)	Rb	plg	WB,IHC,E	H



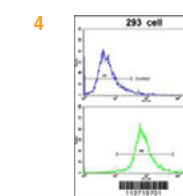
IF analysis of MDA-MB435 cells using the AKT1 antibody.



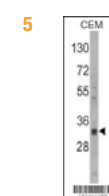
Western blot analysis of mouse brain tissue lysate using the BAIAP2 antibody.



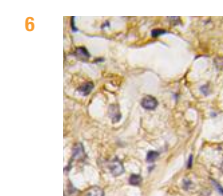
IF analysis of HeLa cells using the BRAF antibody.



FC analysis of 293 cells using the CDH2 antibody.



Western blot analysis of CEM cells using the CROC1A antibody.



IHC analysis using human prostate carcinoma tissue stained with the DRAGON antibody.

## Additional Neurosciences Antibodies (cont.)

CAT. #	ANTIBODY	SP	ISO	VALID	SPEC
	AP7211a CAMK4 (C-term)	Rb	plg	WB,E	H
	AP7513a CDC2L1 (N-term)	Rb	plg	WB,IHC,E	H,M
	AP7514a CDC2L5	Rb	plg	WB,IHC,E	H,M
	AP1473a CDH12 (N-term)	Rb	plg	WB,IHC,E	H
4	AP1498b CDH2 (C-term)	Rb	plg	WB,FC,E	H
	AP1401a CDH4 (N-term)	Rb	plg	WB,IHC,IF,FC,E	H
	AP1402a CDH8 (N-term)	Rb	plg	WB,IHC,E	H
	AP7521b CDK5 (C-term)	Rb	plg	WB,IHC,FC,E	H,M
	AP7088b CERK (C-term)	Rb	plg	WB,E	H,M
	AP6329f CLC4 (C-term)	Rb	plg	WB,IFE	H
5	AP2164a CROC1A (N-term)	Rb	plg	WB,IHC,E	H
	AP8461a CTDSP1 (N-term)	Rb	plg	WB,IHC,E	H
	AP8460a CTDSP2 (N-term)	Rb	plg	WB,IHC,E	H
	AP7595a DAAM2 (N-term)	Rb	plg	WB,IHC,E	H
	AP7086a DGUOK (N-term)	Rb	plg	WB,E	H,M
	AP7086b DGUOK (C-term)	Rb	plg	WB,E	H,M
	AP7034b DMPK (C-term)	Rb	plg	WB,E	H,M
6	AP1421c DRAGON (Center)	Rb	plg	WB,IHC,E	H,M
	AM1131a DRP-2 (Ascites)	M	mlgG2bk	WB,E	H,M
	AP6315c DSCR1 (C-term)	Rb	plg	WB,E	H
	AP6310a DSCR1L2 (C-term)	Rb	plg	WB,E	H,M
	AP7537a DYRK1A (N-term)	Rb	plg	WB,E	H
	AP7555a DYRK1A (N-term)	Rb	plg	WB,IHC	H

Additional Neurosciences Antibodies (cont.)

CAT. #	ANTIBODY	SP	ISO	VALID	SPEC	
	AP2120a	E2EPF (N-term)	Rb	plg	WB,IHC,E	H
	AP6138a	EDG2 (N-term)	Rb	plg	WB,E	H
	AP7278a	EN1 (N-term)	Rb	plg	WB,IHC,E	H
	AP7612d	EphA7	Rb	plg	WB,IHC,E	H,M
	AP7622a	EphB1 (C-term)	Rb	plg	WB,IHC,E	H,M
7	AP7623a	EphB2 (N-term)	Rb	plg	WB,IHC,E	H
	AM7623b	EPHB2	M	mIgG1k	WB,IHC,FC,E	H
	AM7624a	EPHB3	M	mIgG1k	WB,E	H
	AP7625d	EphB4	Rb	plg	WB,IHC,E	H
	AP7627a	EphB6 (N-term S45)	Rb	plg	WB,IHC,FC,E	H
	AP2160a	EPS15R (N-term)	Rb	plg	WB,E	H
	AP7629d	ERBB2 (Y1248)	Rb	plg	WB,IHC,E	H
	AP7501a	ERK2 (C-term)	Rb	plg	WB,IHC,E	H,M
8	AP2536b	FACL4 (Center)	Rb	plg	WB,IHC,IF,E	H
	AP2789c	GABRB3 (Center)	Rb	plg	WB,IHC,E	H
	AP8061a	GAK (N-term)	Rb	plg	WB,IHC,E	H
	AP8061c	GAK (Center)	Rb	plg	WB,IHC,E	H
	AP7268a	GCM1 (N-term)	Rb	plg	WB,E	H
	AP2064a	GDF2 (N-term)	Rb	plg	WB,IHC,E	H,M
	AP2017b	GFAP (C-term)	Rb	plg	WB,E	H,M
	AP1549b	GJA9 (C-term)	Rb	plg	WB,IHC,E	H
	AP1541a	GJB1 (N-term)	Rb	plg	WB,IHC,E	H

Additional Neurosciences Antibodies (cont.)

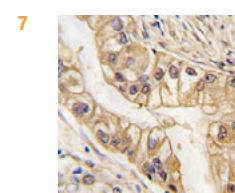
CAT. #	ANTIBODY	SP	ISO	VALID	SPEC	
	AP7871a	GMFG (N-term)	Rb	plg	WB,IHC,E	H,M,R
9	AP6133a	GREMLIN (C-term)	Rb	plg	WB,IHC,E	H,M
	AP1641a	GRPRC1H (C-term)	Rb	plg	WB,E	H,M
	AP8120b	GSK3A (C-term)	Rb	plg	WB,IHC,E	H
	AP2019a	Hash1 (N-term)	Rb	plg	WB,IHC,E	H,M
	AP1104a	HDAC4 (C-term)	Rb	plg	WB,E	H,M
	AP7629e	HER2	Rb	plg	WB,IHC,IF,FC,E	H,M
	AP7629b	HER2/ErbB2 (C-term)	Rb	plg	WB,IHC,E	H
	AP7629a	HER2/ErbB2 (N-term)	Rb	plg	WB,IHC,FC,E	H
	AP7539e	HIPK2 (N-term D69)	Rb	plg	WB,IHC,E	H
	AP1564a	Hippocalcin (N-term)	Rb	plg	WB,IHC,E	H,M
10	AP1442a	HNMT (N-term)	Rb	plg	WB,IHC,IF,E	H
	AP1700b	HRH3 (C-term)	Rb	plg	WB,IHC,E	H
	AP1334a	HSP40	Rb	plg	WB,IHC,E	H
	AP7139a	HSPB8 (N-term)	Rb	plg	WB,E	H
	AP8110a	IKK gamma	Rb	plg	WB,IHC,E	H
	AP2161a	IMOS-1 (N-term)	Rb	plg	WB,IHC,E	H,M
	AP6284a	INA (N-term)	Rb	plg	WB,IHC,E	H
11	AP1484a	KITLG (N-term)	Rb	plg	WB,IHC,FC,E	H
	AP1467c	Latexin (Center)	Rb	plg	WB,IHC,FC,E	H
	AP7813a	LIMK1 (N-term)	Rb	plg	WB,IHC,E	H
	AP6152a	LRP15 (C-term)	Rb	plg	WB,IHC,E	H

Additional Neurosciences Antibodies (cont.)

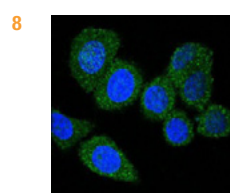
CAT. #	ANTIBODY	SP	ISO	VALID	SPEC	
12	AP6155a	LRP3 (C-term)	Rb	plg	WB,IHC,E	H
	AP6157a	LRP5 (C-term)	Rb	plg	WB,IHC,E	H,M
	AP1218a	LSD1 (N-term)	Rb	plg	WB,IHC,E	H,M
	AP6176a	MAGED1 (Center)	Rb	plg	WB,IHC,E	H
	AP7222a	MAPK10 (N-term)	Rb	plg	WB,E	H,M
	AP7144a	MARK1 (N-term)	Rb	plg	WB,IHC,E	H
	AP7145b	MARK4 (C-term)	Rb	plg	WB,E	H
	AP2545d	MeCP2 (S421)	Rb	plg	WB,E	H,M
13	AP2172a	MIB (N-term)	Rb	plg	WB,IHC,IF,E	H
	AP2181a	MJD (N-term)	Rb	plg	WB,IHC,E	H
	AP7965a	MLCK (N-term)	Rb	plg	WB,IHC,E	H,M
	AP7919a	MLK1 (C-term)	Rb	plg	WB,IHC,E	H
	AP7920a	MLK2 (C-term)	Rb	plg	WB,IHC,E	H
	AP7828a	MORF/MYST4 (N-term)	Rb	plg	WB,IHC,E	H
	AP7664d	MUSK	Rb	plg	WB,FC,E	H,M
	AP2185a	NCE2 (N-term)	Rb	plg	WB,IHC,E	H
	AP7771c	NGFB (Center)	Rb	plg	WB,IHC,FC,E	H
	AP8080a	NME1 (N-term)	Rb	plg	WB,IHC,E	H,M
	AP7272c	NP1(Nptx1) (Center)	Rb	plg	WB,IHC,E	H
	AP6222a	NRG1 (Center)	Rb	plg	WB,IHC,FC,E	H
14	AP2780b	NSE (Y25)	Rb	plg	WB,IHC,E	H,M
	AP7763b	NTF3 (C-term)	Rb	plg	WB,E	H

Additional Neurosciences Antibodies (cont.)

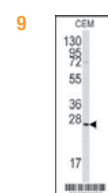
CAT. #	ANTIBODY	SP	ISO	VALID	SPEC	
	AP7765b	NTF5 (C-term)	Rb	plg	WB,IHC,FC,E	H
	AP7686d	NTRK1 (Y791)	Rb	plg	WB,E	H
	AP2774a	NUMBL (N-term)	Rb	plg	WB,IHC,E	H
	AP8086c	OPHN1L (Center)	Rb	plg	WB,IHC,E	H,M
	AP2747c	OPRS1 (Center)	Rb	plg	WB,E	H,M
15	AP2747a	OPRS1 (N-term)	Rb	plg	WB,FC,E	H
	AP6410a	Pael-R (GPR37) (N-term)	Rb	plg	WB,IHC,E	H
	AP7928d	PAK3 (C-term)	Rb	plg	WB,E	H
	AP7160a	PANK2 (N-term)	Rb	plg	WB,E	H,M,Pr,R
	AP8092a	PBP (N-term)	Rb	plg	WB,IHC,E	H
	AP8409a	PCPTP1 (N-term)	Rb	plg	WB,IHC,E	H,M
	AP7026b	PFTK1 (C-term)	Rb	plg	WB,E	H,M
	AP8029a	PI4KA (N-term)	Rb	plg	WB,IHC,E	H
	AP2102c	PJA (Center)	Rb	plg	WB,IHC,E	H
	AP7016a	PKC beta 1/2 (C-term)	Rb	plg	WB,IHC,E	H
	AP7016b	PKC beta 2 (C-term)	Rb	plg	WB,E	H,M,Pr,R
	AP7019a	PKC epsilon (N-term)	Rb	plg	WB,IHC,E	H
	AP7021a	PKC gamma (C-term)	Rb	plg	WB,IHC,E	H,M
16	AP1087a	PMAT(Slc29a4) (N-term)	Rb	plg	WB,IHC,E	H
	AP8474a	PPEF1 (N-term)	Rb	plg	WB,IHC,E	H
	AP2538a	PPT1 (N-term)	Rb	plg	WB,E	H,M
	AM1193a	PRDM10	M	mIgG1	WB,E	H,M



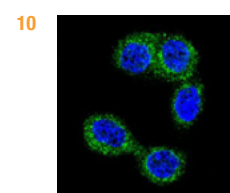
IHC analysis using human lung carcinoma stained with EphB2 antibody.



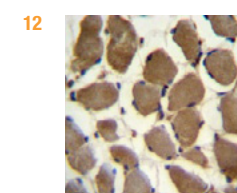
IF analysis of HeLa cells using the FACL4 antibody.



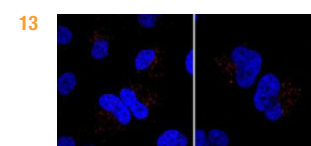
Western blot analysis of CEM cell lysate using the GREMLIN antibody.



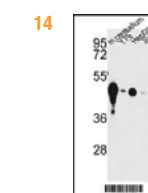
IF analysis of HeLa cells using the HNMT antibody.



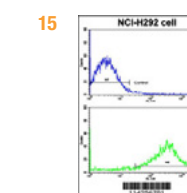
IHC analysis of human skeletal muscle tissue using the LRP3 antibody.



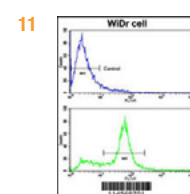
IF analysis of HeLa cells using MIB antibody.



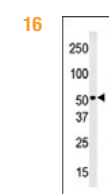
Western blot analysis of mouse cerebellum tissue lysate, Y79 cells, HepG2 cells, Jurkat cells, and CEM cells using the NSE antibody.



FC analysis of NCI-H292 cells using the OPRS1 antibody.



FC analysis of WiDr cells using the KITLG antibody.



Western blot analysis of HepG2 cell lysate with the PMAT antibody.

## Additional Neurosciences Antibodies (cont.)

CAT. #	ANTIBODY	SP	ISO	VALID	SPEC
AP1202b	PRDM2 (RIZ1)	Rb	plg	WB,IHC,IP,E	H,M,R
AP7078a	PRKCABP (N-term)	Rb	plg	WB,E	H,M
<b>17</b> AP8436a	PTEN (N-term)	Rb	plg	WB,IHC,IF,E	H,M
AP7582b	RASGRF1 (S929)	Rb	plg	WB,IHC,E	H
AP7942b	RSK2 (C-term)	Rb	plg	WB,IHC,E	H,Pr
AP7944a	RSK4 (N-term)	Rb	plg	WB,IHC,E	H,M
AP2740b	SEMAGA (C-term)	Rb	plg	WB,IHC,E	H
AP1408c	SHB (Center)	Rb	plg	WB,IHC,E	H
<b>18</b> AP2054a	SNAIL (N-term D24)	Rb	plg	WB,IHC,E	H
AP6261a	SOST (N-term)	Rb	plg	WB,IHC,E	H,M
AP8430a	STEP (N-term)	Rb	plg	WB,IHC,E	H
AP7244b	STK9 (C-term)	Rb	plg	WB,IHC,E	H
AP6411b	Synphilin-1 (SNCAIP) (C-term)	Rb	plg	WB,E	H,M

## Additional Neurosciences Antibodies (cont.)

CAT. #	ANTIBODY	SP	ISO	VALID	SPEC
<b>19</b> AP2757a	SYP (Y81)	Rb	plg	WB,IHC,FC,E	H
AP2050a	THY1 (N-term)	Rb	plg	WB,IHC,E	H
AP1457a	TRAPPC4 (N-term)	Rb	plg	WB,IHC,E	H
AP7686a	TRKA (C-term)	Rb	plg	WB,IHC,FC,E	H
AP7687d	TRKB	Rb	plg	WB,IHC,FC,E	H,M
AM7688a	TrkC (N-term)	M	mIgG1k	WB,IHC,E	H
<b>20</b> AM7679b	TYRO3	M	mIg	WB,IHC,IF,E	H
AP2107a	UBCE7IP3 (N-term)	Rb	plg	WB,IHC,E	H,M
AP2108a	UBCE7IP4 (N-term)	Rb	plg	WB,IHC,E	H,Ha
AP2109c	UBCE7IP5 (Center)	Rb	plg	WB,IHC,E	H
AP2100b	UbcH7-BP (C-term)	Rb	plg	WB,IHC,E	H
AP2156a	UBE2V (N-term)	Rb	plg	WB,E	H,M
AP2111a	UBE4B (N-term)	Rb	plg	WB,IHC,E	H,M

## Abcepta: Your Partner in Zebrafish Neurosciences.

Over the past couple of decades, its characteristics and the experimental approaches to which it is amenable (genetics, imaging, embryological manipulations, etc...) have had zebrafish become a prevailing species in neurosciences whether to study a vast array of biological questions, from neurogenesis to neurodegenerative diseases and addiction, or for the screening of compounds with therapeutic potential.

Zebrafish has a long history as a biological model organism in neurosciences. As soon as its usefulness was discovered, scientists started studying the fleeing mechano-sensorial responses involving Mauthner's and Rohon-Beard neurons. The transparency of the zebrafish embryo and larva made it easy to address neural development, greatly improving our understanding of neural crest cell migration pathways and derivatives and also of the midbrain-hindbrain boundary establishment. To date, one of the crown jewels of the study of zebrafish neural development is the complete dissection of the molecular basis of the retinotectal projection establishment.

More recently efforts have slightly switched towards using the zebrafish as a matter of convenience, especially when compared to its higher vertebrate cousins, to address neurodegenerative diseases and potential therapeutics. Zebrafish models of Parkinson's and Alzheimer's diseases have been established and are commonly used to both understand their molecular and cellular basis and assay compounds thought to have therapeutic potential.

Abcepta, in its effort to be your partner in Neurosciences, is proud to now offer our M.O.™ antibodies, a line of products specifically validated in zebrafish applications. For a complete list of our zebrafish M.O. antibodies, please visit our website at [www.abcepta.com](http://www.abcepta.com).

## Abcepta's FINISH LINE Guarantee™

Can't find the antibody you're looking for? Let Abcepta make it for you for FREE!

Are you in dire need of a particular antibody that you can't find to finish your study? Abcepta will put its first-in-class development pipeline at your disposal to make sure you cross the finish line first!

Submit your request online and Abcepta will develop the antibody you need free of charge upon approval. You will receive one FREE, full sized vial (100 µg) of antibody upon project completion.

Abcepta develops thousands of antibodies each year, and we are dedicating a significant portion of our capabilities to meet your specific needs.

## Abcepta's Evaluation Size Antibodies

Not sure whether an antibody is suitable for your particular needs? Why pay full price for an antibody that might end up in the back of your freezer?

With Abcepta's evaluation size vials, you pay only a fraction of the cost for 20 µg of over 10,000 antibodies. When you are convinced that you found the right antibody for your application, then and only then, buy the full size vial.

Abcepta strives to provide the best antibody for your specific application, each and every time.

## Legends

## APPLICATION (APP.)

E = ELISA  
IF = Immunofluorescence  
IHC = Immunohistochemistry  
IP = Immunoprecipitation  
WB = Western Blot

## REACTIVITY (REACT.)

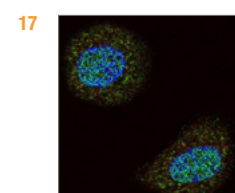
D = Drosophila  
H = Human  
Ha = Hamster  
M = Mouse  
Pr = Primate  
R = Rat

## ANTIBODY

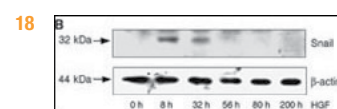
mAb = Monoclonal antibody  
mIg = Monoclonal immunoglobulin  
pAb = Polyclonal antibody  
plg = Polyclonal immunoglobulin

## HOST

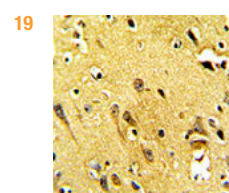
Ms = Mouse  
Rb = Rabbit



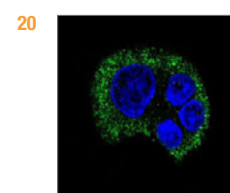
IF analysis of MCF-7 cells using the PTEN antibody.



Western blot analysis of HepG2 cells using the SNAIL antibody.



IHC analysis of human brain tissue stained with the SYP antibody.



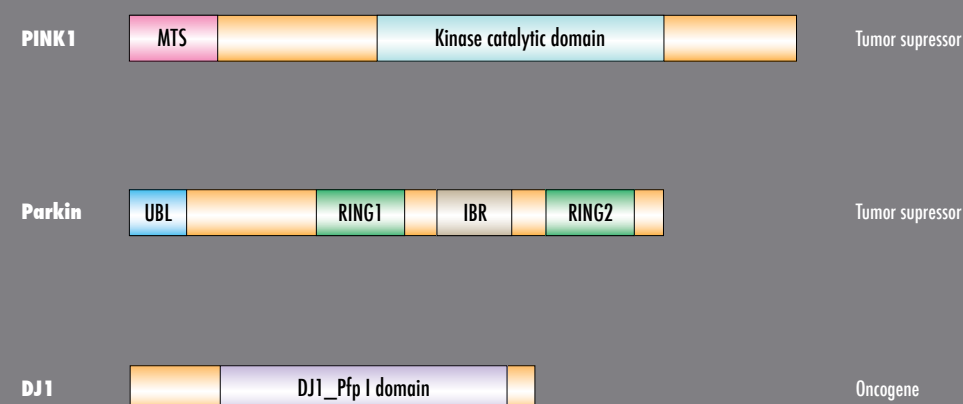
IF analysis of HepG2 cells using the TYRO3 antibody.

## PINK1 in Parkinson's Disease

As a leader in neurosciences resources, Abcepta would like to present an in depth look at the major Parkinson's disease protein PINK1. This diagram is part of the Abcepta Neurosciences Neural Chaperones Survey Wall Chart, available FREE at [www.abcepta.com](http://www.abcepta.com)!

Gene locus	Chromosome	Gene name	Association	Form of Parkinsonism
PARK1 & PARK4	4q21.3-q22 & 4p15	SNCA ( <i>α</i> -Synuclein)	Mutations	Autosomal dominant
PARK2	6q25.2-q27	PARK2 (Parkin)	Mutations	Autosomal recessive early-onset
PARK3	2p13	SPR (Sepsipaterin reductase)	DNA polymorphism	Autosomal dominant
PARK5	4p14	UCHL1 (Ubiquitin thiolesterase)	Mutations	Autosomal dominant
PARK6	1p36.12	PINK1 (PTEN-induced kinase 1)	Mutations	Autosomal recessive early-onset
PARK7	1p36	DJ1 (PD protein 7)	Mutations	Autosomal recessive early-onset
PARK8	12q12	LRRK2 (Leucine-rich repeat kinase 2)	Mutations	Autosomal dominant
PARK9	1p36	ATP13A2 (ATPase type 13A2)	Mutations	Autosomal recessive
PARK10	1p	HIVEP3 (HIV enhancer binding protein 3)	DNA polymorphism	Autosomal dominant
PARK11	2q37.1	GIGYF2 (GRB10 interacting GYF protein 2)	Mutations	Autosomal dominant
PARK12	Xq21-q25	PARK12	DNA polymorphism	X-linked
PARK13	2p13.1	HTRA2 (Serine peptidase 2)	Mutations	Autosomal dominant
PARK14	22q13.1	PLA2G6 (Phospholipase A2)	Mutations	Idiopathic
PARK15	22q11.2-qter	FBX07 (F-box protein 7)	Mutation	Autosomal recessive

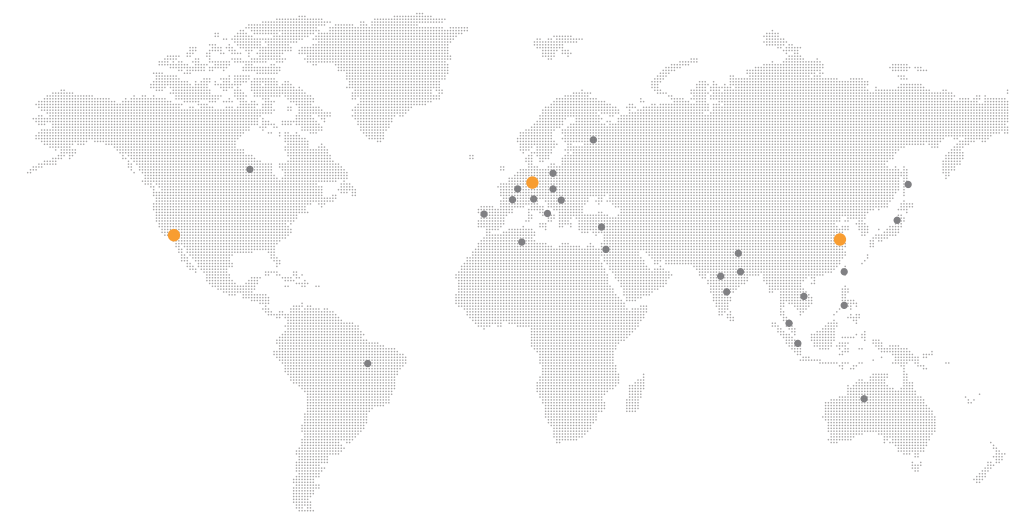
**Table:** Loci and genes associated with Parkinson's disease (PD). In addition to the table, polymorphisms or mutations in **NR4A2** (nuclear receptor subfamily 4, group A, member 2), **NDUFV2** (NADH dehydrogenase flavoprotein 2), **ADH3** (alcohol dehydrogenase 1C), **FGF20** (fibroblast growth factor 20), **GBA** (b-glucosidase), and **MAPT** (microtubule-associated protein tau) genes have been associated with susceptibility to PD (OMIM, 2).



**Figure:** Domain architecture of PINK1, Parkin and DJ1 proteins. In PD, these autosomal recessive genes are linked to oxidative stress or mitochondrial dysfunction. **MTS**, mitochondrial targeting sequence; **UBL**, ubiquitin-like domain; **RING**, RING finger motif; **IBR**, in between ring fingers (2).

## Abcepta: A Global Company

Abcepta truly has a global reach. With offices in the US and China, and a leading network of distributors in Europe and around the world, our products can be at your bench as fast as the next day. Review our list below to find the distributor for your region and take advantage of the products and services that Abcepta has to offer.



### USA Headquarters

Abcepta, Inc.  
10320 Camino Santa Fe  
Suite G, San Diego, CA  
92121 USA  
Tel: (888) 735-7227  
(858) 875-1900  
Fax: (858) 875-1999  
Email: [sales@abcepta.com](mailto:sales@abcepta.com)

### China

Abcepta Biotech Ltd. Co.  
388 Xiping Street Ascendas Park  
Building 2 Suzhou Industrial Park,  
Suzhou city, Jiangsu Province, China,  
215104  
Tel: +86 512 88856768  
Tel: +86 512 88856768  
Fax: +86 512 88856768  
Email: [orders-china@abcepta.com](mailto:orders-china@abcepta.com)

### Abcepta Distributors

#### North & South America

##### Brazil

Lab Research do Brasil Ltda  
Tel: +55 11 3544-4891  
Email: [vendas@lab-research.com](mailto:vendas@lab-research.com)

LGC Biotechnologia Ltda  
Tel: +55 11 4614 8070  
Email: [diretoria.geral@lgcbio.com.br](mailto:diretoria.geral@lgcbio.com.br)

##### Canada

Cedarlane Labs  
Tel: +1 (800) 268-5058  
Email: [custserv@cedarlanelabs.com](mailto:custserv@cedarlanelabs.com)

##### United States

Abcepta, Inc.  
Tel: (888) 735-7227  
Email: [orders@abcepta.com](mailto:orders@abcepta.com)

USA Headquarters  
Tel: (888) 735-7227  
Email: [orders@abcepta.com](mailto:orders@abcepta.com)

Cedarlane Labs  
Tel: +1 (800) 721-1644  
Email: [service@cedarlanelabs.com](mailto:service@cedarlanelabs.com)

#### Europe

##### Austria

BIOZOL GmbH  
Tel: +498937996666  
Email: [info@biozol.de](mailto:info@biozol.de)

Hölzel Diagnostika Handels GmbH  
Tel: +49 221 126 02 66  
Email: [info@hoelzel.de](mailto:info@hoelzel.de)

##### VWR International GmbH

Tel: +01 97 002 0  
Email: [info@at.vwr.com](mailto:info@at.vwr.com)

Divbio Science Europe  
Tel: +31 (0)76 565 1680  
Email: [orders@divbio.eu](mailto:orders@divbio.eu)

##### Belgium

Bio-Connect BV  
Tel: +32 2 503 0348  
Email: [info@bio-connect.nl](mailto:info@bio-connect.nl)

EMELCA Bioscience  
Tel: 0484 629 800  
Email: [info@emelcabio.com](mailto:info@emelcabio.com)

VWR International BVBA  
Tel: +016 385 011  
Email: [customerservice@be.vwr.com](mailto:customerservice@be.vwr.com)

Divbio Science Europe  
Tel: +31 (0)76 565 1680  
Email: [orders@divbio.eu](mailto:orders@divbio.eu)

#### Croatia

Bio-Kasztel  
Tel: +36 1 3853887  
Email: [info@kasztel.hu](mailto:info@kasztel.hu)

Divbio Science Italia  
Tel: +39 350 035 1719  
Email: [info@divbio.it](mailto:info@divbio.it)

##### Czech Republic

BARIA s.r.o.  
Tel: +420 244 911 228  
Email: [info@baria.cz](mailto:info@baria.cz)

VITRUM VWR s. r. o.  
Tel: +420 321 570 321  
Email: [info@cz.vwr.com](mailto:info@cz.vwr.com)

Divbio Science Italia  
Tel: +39 350 035 1719  
Email: [info@divbio.it](mailto:info@divbio.it)

##### Denmark

Nordic BioSite ApS  
Tel: 8844 8801  
Email: [www.nordicbiosite.com](mailto:www.nordicbiosite.com)

VWR - Bie & Berntsen  
Tel: +43 86 87 88  
Email: [info@dk.vwr.com](mailto:info@dk.vwr.com)

Divbio Science Europe  
Tel: +31 (0)76 565 1680  
Email: [orders@divbio.eu](mailto:orders@divbio.eu)

#### Estonia

Nordic BioSite OY  
Tel: +46 (0)8 544 433 40  
Email: [info@nordicbiosite.com](mailto:info@nordicbiosite.com)

Divbio Science Europe  
Tel: +31 (0)76 565 1680  
Email: [orders@divbio.eu](mailto:orders@divbio.eu)

##### Finland

Nordic BioSite OY  
Tel: 020 7432 007  
Email: [www.nordicbiosite.com](mailto:www.nordicbiosite.com)

VWR International Oy  
Tel: +09 80 45 51  
Email: [info@fi.vwr.com](mailto:info@fi.vwr.com)

Divbio Science Europe  
Tel: +31 (0)76 565 1680  
Email: [orders@divbio.eu](mailto:orders@divbio.eu)

##### France

Interchim  
Tel: 33 (0)4 70 03 73 06  
Email: [interbiotech@interchim.com](mailto:interbiotech@interchim.com)

VWR International S.A.S.  
Tel: +0 825 02 30 30 (0,15 EUR TTC/min)  
Email: [info@fr.vwr.com](mailto:info@fr.vwr.com)

#### CliniSciences

Tel: +33(0)977400909  
Email: [info@clinisciences.com](mailto:info@clinisciences.com)

Divbio Science Europe  
Tel: +31 (0)76 565 1680  
Email: [orders@divbio.eu](mailto:orders@divbio.eu)

##### Germany

BIOZOL GmbH  
Tel: +498937996666  
Email: [info@biozol.de](mailto:info@biozol.de)

Hölzel Diagnostika Handels GmbH  
Tel: +49 221 126 02 66  
Email: [info@hoelzel.de](mailto:info@hoelzel.de)

Antibodies-Online GmbH  
Tel: +49 (0)241 95 163 153  
Email: [orders@antibodies-online.com](mailto:orders@antibodies-online.com)

VWR International  
Tel: +0800 702 00 07  
Email: [info@de.vwr.com](mailto:info@de.vwr.com)

Divbio Science Europe  
Tel: +31 (0)76 565 1680  
Email: [orders@divbio.eu](mailto:orders@divbio.eu)

##### Greece

Interlab Ltd  
Tel: +30 2106532220  
Email: [info@interlab.gr](mailto:info@interlab.gr)



**Hungary**

Bio-Kasztel  
Tel: +36 1 3853887  
Email: info@kasztel.hu

Divbio Science Italia  
Tel: +39 350 035 1719  
Email: info@divbio.it

**Iceland**

Nordic BioSite AB  
Tel: +358 (0)20 7432 007  
Email: info@nordicbiosite.com

**Ireland**

Antibody Resource  
Tel: +44 1223 813746  
Email: www.antibodyresource.com

WVR International Ltd  
Tel: +01 88 22 222  
Email: info@ie.vwr.com

Generon Ltd.  
Tel: +44 (0)1753 866511  
Email: info@generon.co.uk

**Italy**

DBA Italia s.r.l.  
Tel: +39 02 26922300  
Email: orders@dbaItalia.it

WVR International PBI S.r.l.  
Tel: 2-3320311  
Email: info@it.vwr.com

Divbio Science Italia  
Tel: +39 350 035 1719  
Email: info@divbio.it

**Latvia**

Nordic BioSite OY  
Tel: +46 (0)8 544 433 40  
Email: info@nordicbiosite.com

Divbio Science Europe  
Tel: +31 (0)76 565 1680  
Email: orders@divbio.eu

**Lithuania**

Nordic BioSite OY  
Tel: +46 (0)8 544 433 40  
Email: info@nordicbiosite.com

Divbio Science Europe  
Tel: +31 (0)76 565 1680  
Email: orders@divbio.eu

**Luxembourg**

Bio-Connect BV  
Tel: +32 2 503 0348  
Email: info@bio-connect.nl

EMELCA Bioscience  
Tel: +31.618 407 397  
Email: info@emelcambio.com

Divbio Science Europe  
Tel: +31 (0)76 565 1680  
Email: orders@divbio.eu

**Netherlands**

Bio-Connect BV  
Tel: +31 (0)26 326 4450  
Email: info@bio-connect.nl

EMELCA Bioscience  
Tel: +31.618 407 397  
Email: info@emelcambio.com

WVR International B.V.  
Tel: +020 4808 400  
Email: info@nl.vwr.com

Divbio Science Europe  
Tel: +31 (0)76 565 1680  
Email: orders@divbio.eu

**Norway**

Nordic BioSite AS P.b.  
Tel: 2396 0418  
Email: info@nordicbiosite.com

WVR International AS  
Tel: 2290  
Email: info@no.vwr.com

Divbio Science Europe  
Tel: +31 (0)76 565 1680  
Email: orders@divbio.eu

**Poland**

STI  
Tel: +48 (61) 6417759  
Email: office@sti.biz.pl

Divbio Science Italia  
Tel: +39 350 035 1719  
Email: info@divbio.it

**Portugal**

AbBcn S.L.  
Tel: 902 220 246  
Email: info@antibodybcn.com

WVR International - Material de  
Laboratório, Lda  
Tel: +21 3600 770  
Email: info@pt.vwr.com

**Romania**

Bio-Kasztel  
Tel: +36 1 3853887  
Email: info@kasztel.hu  
Divbio Science Italia  
Tel: +39 350 035 1719  
Email: info@divbio.it

**Serbia**

Bio-Kasztel  
Tel: +36 1 3853887  
Email: info@kasztel.hu

**Slovakia**

BARIA s.r.o.  
Tel: +420 244 911 228  
Email: info@baria.cz  
Divbio Science Italia  
Tel: +39 350 035 1719  
Email: info@divbio.it

**Slovenia**

Bio-Kasztel  
Tel: +36 1 3853887  
Email: info@kasztel.hu

**Spain**

AbBcn S.L.  
Tel: 902 220 246  
Email: info@antibodybcn.com

Abyntek Biopharma S.L.  
Tel: (+34) 94 404 80 80  
Email: info@abyntek.com

WVR International EuroLab S.L.  
Tel: +902 222 897  
Email: info@es.vwr.com

**Sweden**

Nordic Biosite AB  
Tel: +358 (0)20 7432 007  
Email: info@nordicbiosite.com

WVR International AB  
Tel: +08 621 34 00  
Email: info@se.vwr.com

Divbio Science Europe  
Tel: +31 (0)76 565 1680  
Email: orders@divbio.eu

**Switzerland**

LuBioScience GmbH  
Tel: +41 41 417 02 80  
Email: info@lubio.ch

WVR International GmbH  
Tel: +044 745 13 13  
Email: info@ch.vwr.com

Divbio Science Europe  
Tel: +31 (0)76 565 1680  
Email: orders@divbio.eu

**United Kingdom**

Stratech Scientific Ltd.  
Tel: 0044 (0) 1638782600  
Email: info@stratech.co.uk

Insight Biotechnology  
Tel: 0800 073 3133  
https://www.insightbio.com

Antibody Resource  
Tel: +44 1223 813746  
Email: orders@antibodyresource.com

WVR International Ltd  
Tel: +0800 22 33 44  
Email: uksales@uk.vwr.com

**Asia/Pacific Rim****Australia**

Resolving Images Pty Ltd  
Tel: +61 3 9470 4704  
Email: sales@resolvingimages.com

Assay Matrix Pty Ltd  
Tel: +61 405 701 981  
Email: info@assaymatrix.com

**China**

China  
Tel: +86 512 88856768  
Email: sales@abcepta.com

**Hong Kong**

Gene Company Limited  
Tel: (852) 2896-6283  
Email: info@genehk.com

Onwon Trading Limited  
Tel: (852) 2757-7569  
Email: emily@onwon.com.hk

**India**

Discovery Bionics  
Tel: 91 – 11-49064641  
Email: sales@discoverybionics.com

**Japan**

Cosmo Bio Co., Ltd.  
Tel: 81-3-5632-9610  
Email: mail@cosmobio.co.jp

Funakoshi Inc.  
Tel: 81-3-5684-1620  
Email: reagent@funakoshi.co.jp

B-Bridge International, Inc.  
Tel: 075-644-4160  
Email: info@b-bridge.com

**Malaysia**

Precision Technologies Pte Ltd  
Tel: +65 6273 4573  
Email: scitech@pretech.com.sg

**New Zealand**

BioCore Pty Ltd  
Tel: 1800 003 991  
Email: sales@biocore.com.au

**Singapore**

Precision Technologies Pte Ltd.  
Tel: +65 6273 4573  
Email: scitech@pretech.com.sg

Research Instruments  
Tel: +65 6571 0888  
Email: info@ri.com.sg

**South Korea**

Sungwoo LifeScience  
Tel: +82-2-985-7471  
Email: order@sungwools.com

Kim & Friends Inc  
Tel: +82-2-2647-6611  
Email: knf.oversea1@gmail.com

Bioclone Corp.  
Tel: +82-2-2690-0058  
Email: bioclone@bioclone.co.kr

**Taiwan**

Kelowna International Scientific  
Inc.  
Tel: +886-2-8972-0201  
Email: kelowna@ms29.hinet.net

Bond Biotech  
Tel: 886-4-2358-3959  
Email: bond.biotech@gmail.com

## Legends

**VALIDATION**

ChIP = Chromatin Immunoprecipitation

DB = Phospho-specific dot blot

E = Elisa

IF = Immunofluorescence

IHC = Immunohistochemistry

IP = Immunoprecipitation

WB = Western blot

**SPECIFICITY**

Gt = Goat

H = Human

M = Mouse

R = Rat

**INTERLAB CO.,LTD**  
Tel: +886 2 2736 7100  
Email: service@interlab.com.tw

**Vietnam**

**Truong Bio, Inc.**  
Tel: +84-8-3755-3648  
Email: info@truong.bio

**Middle East**

**Israel**

**ADVANSYS Technologies for Life Ltd.**  
Tel: +972 (0) 89417118  
Email: info@advansys.co.il

**Pakistan**

**Life Technologies (India) Pvt Ltd**  
Tel: +91 11 4220 8000  
Email: customerservice@lifetchindia.com

**Turkey**

**Ardi Medikal Araştırma ve Diagnostik  
ürünleri San. Tic. Ltd. Şti.**  
Tel: +90 216 443 05 44  
Email: info@ardimed.com

**Africa**

**South Africa**

**BIOCOM biotech**  
Tel: +27 12 644 2795  
Email: info@biocombiotech.co.za

**Divbio Science Africa**

Tel: 087 820 5200  
Email: jason@divbio.africa

**Central America**

**Central America**

**Lab Research do Brasil Ltda.**  
Tel: 55 11 3544-4891  
Email: vendas@lab-research.com

**Worldwide**

**Worldwide**

**Antibodies-Online GmbH**  
Tel: +49 (0)241 95 163 153  
www.antibodies-online.com

## Legends

**VALIDATION**

ChIP = Chromatin Immunoprecipitation  
DB = Phospho-specific dot blot  
E = Elisa  
IF = Immunofluorescence  
IHC = Immunohistochemistry  
IP= Immunoprecipitation  
WB = Western blot

**SPECIFICITY**

Gt = Goat  
H = Human  
M = Mouse  
R = Rat



**USA Headquarters**

Abcepta, Inc.  
10320 Camino Santa Fe Suite G  
San Diego, CA 92121 USA  
Tel: (888) 735-7227  
(858) 875-1900  
Fax: (858) 875-1999  
Email: [sales@abcepta.com](mailto:sales@abcepta.com)

**China**

Abcepta Biotech Ltd. Co.  
388 Xiping Street Ascendas Park Building 2  
Suzhou Industrial Park  
Jiangsu, China  
Tel: +86 512 88856768  
Tel: +86 512 88856768  
Fax: +86 512 88856768  
Email: [orders-china@abcepta.com](mailto:orders-china@abcepta.com)