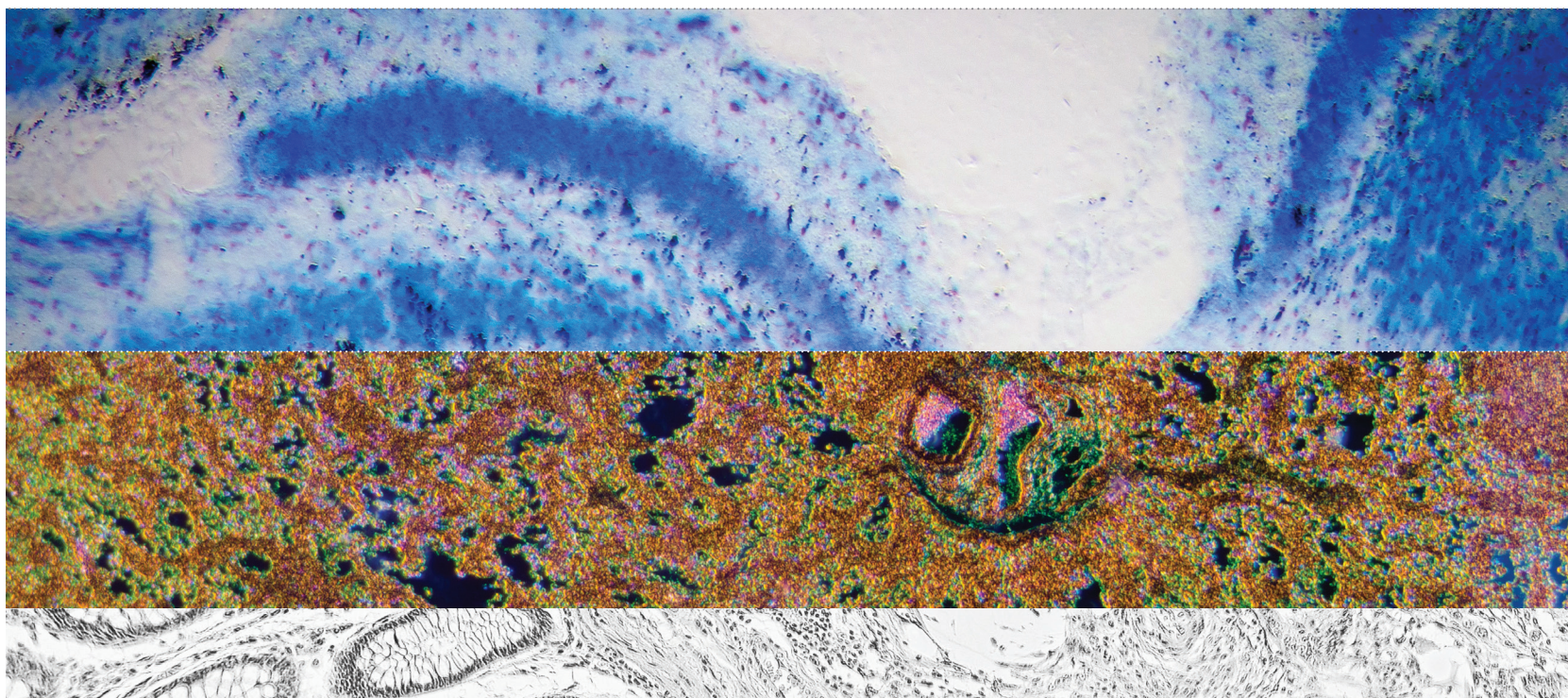
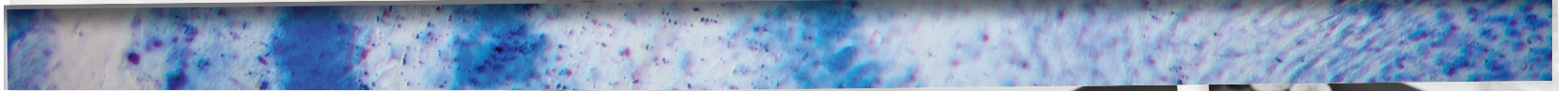


Product Overview





ABCEPTATM

Discovery Demands It



Abcepta: your partner for antibodies and related reagents

Abcepta manufactures and distributes high quality antibodies and related products for life science research. Our well-validated portfolio of antibodies covers the full spectrum of research fields, pathways, and diseases. Our team works everyday to provide you with products you can trust for your research.

Abcepta has been in business for more than fifteen years, and thousands of citations testify to the use of our products in key areas of research such as neuroscience, cancer, metabolism, gene regulation, stem cells, and more.

The products highlighted in this brochure are a sampling of our deep research portfolio. For a comprehensive, searchable list of our products by category or name, visit www.abcepta.com, where you can also find protocols and additional resources to support your research.

Table of Contents

4	Neuroscience Antibodies
5	Cancer Antibodies
6	Metabolism Antibodies
7	Stem Cell Antibodies
8	Phospho-Specific Antibodies and Protein Modification Antibodies
9	TAG Specific Antibodies
10	Abcepta: A Global Company
10-11	List of distributors

Neuroscience Antibodies (10,000+ products)

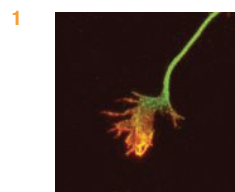
Neuroscience research encompasses a diversity of areas, including neuroendocrinology, development and repair, neurodegeneration, neuronal and glial markers, and neurotransmitters, receptors, and transporters. The realm of neuroscience is de facto impacted by a multitude of cellular processes, including apoptosis, autophagy, cell signaling, cell development and differentiation, and protein modifications, to name but a few.

The empirical methods employed by the first neuroscientists have yielded to the incorporation of cutting edge methodologies borrowed from biochemistry and genetics. Tremendous advances have been made through the extensive use of antibodies to image not only the dynamics of individual nerve cells and their molecular constituents but also the perceptual and motor tasks in the brain.

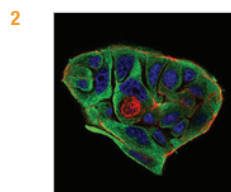
From Alzheimer's and Parkinson's to key processes such as neurogenesis, signal transmission and cellular remodeling, Abcepta is a key resource for your neuroscience research.

Alzheimer's Disease Antibodies

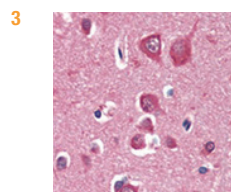
CAT. #	Antibody Target	Host	Application	Reactivity
1	AVS10003	Rb	IHC, ICC	H, M, R
2	A01924a	M	WB, FC, ICC, E	H, M, R
	AP2024a	Rb	WB, IHC, IF, E	H, M
	AP6407a	Rb	WB, IF, E	H, M
	AP7099h	Rb	WB, IF, E	H, M
3	AM6406a	Ms	WB, IHC, E	H, M



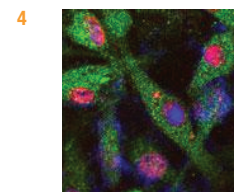
Cat# AVS10003
APP Antibody
Mouse cortical neurons



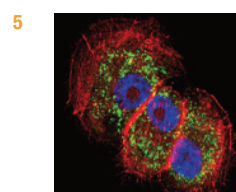
Cat# A01924a
BACE1 Antibody
MCF-7 cells



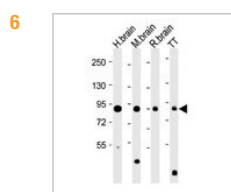
Cat# AM6406a
PINK1 Antibody
Human brain cortex tissue



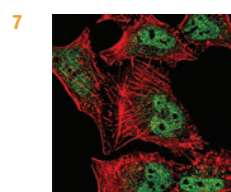
Cat# AP7099h
PARK8 Antibody
Tau-stable SY5Y cells



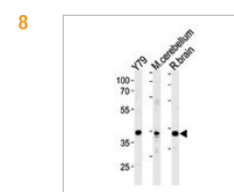
Cat# AP6402B
Parkin Antibody
NCI-H460 cells



Cat# AP7219b
DCAMKL1 Antibody
Human, mouse, rat brain lysate



Cat# AP6285a
MEF2C Antibody
Hela cells



Cat# AP2021b
NeuroD1 Antibody
Y79 cells, mouse cerebellum, rat brain lysates

Parkinson's Disease Antibodies

CAT. #	Antibody Target	Host	Application	Reactivity
4	AP7099h	Rb	WB, IF, E	H, M
5	AP6402b	Rb	WB, IF, FC, IHC-P, E	H, M
	AP6406a	Rb	WB, IHC, E	H, M
	AP6407a	Rb	WB, IF, E	H, M
	AM7099b	M	WB, E	H, M
AM7099a	M	WB, E	H, M	
AM6406a	PINK1 (Ascites)	M	WB, IHC, E	H, M

Neurogenesis Antibodies

CAT. #	Antibody Target	Host	Application	Reactivity
AT1041a	ADAM11 (M01)	M	WB, E	H
AT1042a	ADAM12 (M01)	M	WB, E	H
AP1492a	ADAM17 (N-term)	Rb	WB, FC, E	H
AT1043a	ADAM2 (M01)	M	WB, E	H
AP7437a	ADAM9 (N-term)	Rb	WB, FC, E	H, M
AT1063a	AES (M02)	Ms	WB, E	H
6	AP7219b	Rb	WB, IHC, IF, E	H, M
	AP7126a	Rb	WB, E	H
7	AP6285a	Rb	WB, IHC-P, IF, E	H
	AP2021b	Rb	WB, E	H, M
	AP2022a	Rb	WB, E	H
	AP2023b	Rb	WB, E	H, M
8	AP2021b	Rb	WB, E	H, M, R

Cancer Antibodies (12,000+ products)

Cancer is a multi-factorial disease triggered by a combination of genetic and environmental factors. Mutations in proto-oncogenes, tumor suppressor genes, and DNA damage repair components all play a role in the development of oncological diseases. Progress has been made in identifying fundamental oncogenic mutations, such as those occurring in members of the BRCA gene family, and developing predictive genetic tests. Mammography and PAP/HPV have enabled the detection of early stage cancers, thereby contributing to the reduction of cancer deaths.

Yet cancer is far from being eradicated, and only advancement in our fundamental knowledge of the biological origins of this disease holds the promise of developing novel and effective drugs to combat it. Hence, basic and translational cancer research continue to be essential to the endeavor of treating and preventing cancer.

Abcepta offers a comprehensive selection of cancer antibodies validated in multiple applications and across commonly studied species, to advance your research. These antibodies are directed against important pathways and cellular processes instrumental to our understanding of cancer.

Apoptosis and Autophagy Antibodies

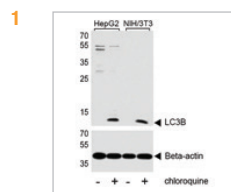
CAT. #	Antibody Target	Host	Application	Reactivity
1 AP1802a	LC3 (APG8B) (N-term)	Rb	WB, IHC-P, IF, E	H, M, R
AM1818a	Beclin 1 (Ascites)	M	WB, IHC-P, IF, E	H
AP1816a	ATG12 (N-term)	Rb	WB, IF, IHC-P, E	H
AP2183B	SQSTM1 (p62) (C-term)	Rb	WB, IHC-P, IF, E	H, M
AP1303a	Bcl-2 (BH3)	Rb	WB, IHC-P, IF, E	H, R
AP1812b	ATG5 (C-term)	Rb	WB, IHC-P, IF, E	H, M
2 AP1321a	BNIP3	Rb	WB, IHC-P, IF, E	H, M

Tumor Suppressor Antibodies

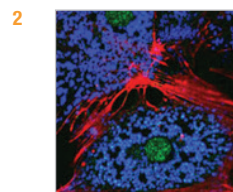
CAT. #	Antibody Target	Host	Application	Reactivity
AP11231b	CTNB1 (C-term)	Rb	WB, IHC-P, IF, E	H
3 AP2612d	Cyclin D1 (S90)	Rb	IHC-P, WB, IF, E	H, M
4 AM7401A	CHK1 Antibody	M	WB, E	H, M
ASC10537	CDKN2A Antibody	Rb	WB, IHC-P, IF, E	H, M, R
AH12532	Wilm's Tumor 1 (WT1)	M	IHC-P, IF, FC	H, M, R
AF1519a	Goat Anti-Hamartin	Gt	WB, IHC, E	H

Oncogene and Oncoprotein Antibodies

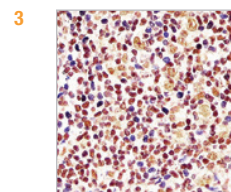
CAT. #	Antibody Target	Host	Application	Reactivity
5 A01368a	EGF Antibody	M	WB, ICC, E	H
6 AW5396-U400	FLT1 Antibody	M	WB	H
7 AP3122a	Phospho-HER4(Y1162)	Rb	WB, IHC-P, IF, E	H
8 AM2048a	SOX2 Antibody	M	WB, IHC-P, IF, FC, E	H
ALS14539	FOS / c-FOS Antibody	M	WB, IHC-P, E	H
ABV11293	AKT1 (T450)	Rb	WB, IHC, IF, FC	H, M, R, B



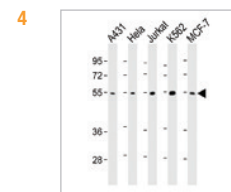
Cat# AP1802a
LC3 Antibody
HepG2, mouse NIH/3T3 cell lysates



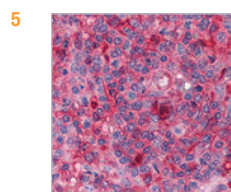
Cat# AP1321a
BNIP3 Antibody
Mouse hepatocytes



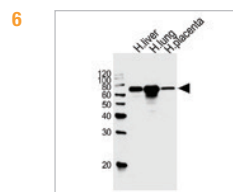
Cat# AP2612d
Cyclin D1 Antibody
Human tonsil tissue



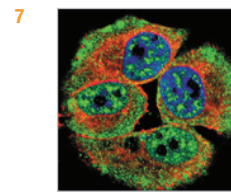
Cat# AM7401A
CHK1 Antibody
A431, HeLa, Jurkat, K562, MCF-7 lysates



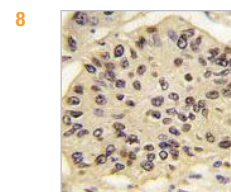
Cat# A01368a
EGF Antibody
Human spleen tissue



Cat# AW5396-U400
FLT1 Antibody
Human liver, lung, placenta lysates



Cat# AP3122a
Phospho-HER4 (Y1162) Antibody
A431 cell lysate



Cat# AM2048a
SOX2 Antibody
Lung carcinoma tissue

Metabolism Antibodies (8,000+ products)

Metabolism science focuses on the cellular processes, catabolism and anabolism, which support the maintenance of cell functions through the breakdown of molecules for energy and the corresponding use of this energy to construct cell structures such as proteins and nucleic acids. Metabolism antibodies research is important in understanding the homeostatic process of cellular regulation and metabolic pathways and numerous diseases of metabolic errors. Metabolism is a constant process as metabolic reactions are concurrently occurring in the body and cells at the same time, all the time. Metabolic diseases or metabolic disorders are a group of diseases that are caused by abnormal chemical reactions in the body's cells. The organs can malfunction in their production of certain metabolic enzymes or hormones or the enzymes or hormones themselves can fail to function properly. Metabolism antibodies are useful in many aspects of biochemical research.

Abcepta is a key resource for your metabolism research, offering a wide span of antibodies validated to your application and species of interest. Metabolic pathways and cellular processes instrumental to metabolism are the focus of Abcepta's development in this field of research.

Metabolic Disorders Antibodies

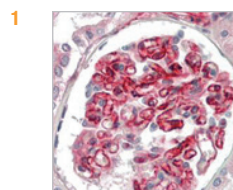
CAT. #	Antibody Target	Host	Application	Reactivity
1	ALS17233 Adiponectin Antibody	M	WB, IHC-P, E	H
2	AP7979B BDNF (C-term)	Rb	WB, IHC-P, IF, FC, E	H
3	ALS12609 GHRL / Ghrelin	Gt	IHC-P, E	H, Monkey
	AP52062 Rabbit Anti-LDL	Rb	WB, IF, IHC-P	H, M
	ALS12906 GSK3B / GSK3 Beta	Rb	WB, IHC-P, IF	H, M, R, B
	AP2401B RAGE (AGER) (C-term)	Rb	WB, IHC-P, E	H

Cellular Metabolism Antibodies

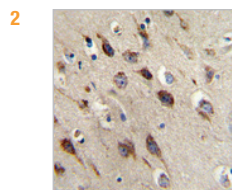
CAT. #	Antibody Target	Host	Application	Reactivity
	AP7759C HIF1Alpha (Center)	Rb	WB, IHC-P, IF, FC, E	H, M
	AT2033a FGF21 (monoclonal) (M01)	M	WB, IHC, E	H
	AP3434a Phospho-AKT1(S473)	Rb	WB, DB, E	H
	AP14053b BAG2 (C-term)	Rb	WB, IHC-P, E	H
	AP7563C Caspase-3 (CASP3) (Center)	Rb	WB, IHC-P, FC, E	H
4	A02135a LRP1 Antibody	M	WB, IHC, FC, ICC, E	H

Mitochondrial Metabolism Antibodies

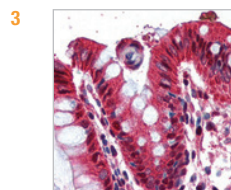
CAT. #	Antibody Target	Host	Application	Reactivity
5	AP52758 TORC1 Antibody	M	WB, ICC	H, M
6	AM1846B ALDH1A1 Antibody	M	FC, IF, WB, IHC-P, E	H
	ALS15789 ETFB (aa152-165)	Gt	WB, IHC-P, E	H
7	AT1989a FADS1 (monoclonal) (M04)	M	WB, IHC, E	H
	AP10767b CLPX (C-term)	Rb	WB, IHC-P, FC, E	H
8	ALS14896 TOMM22 / TOM22	M	WB, IHC-P, IF, E	H, M, R



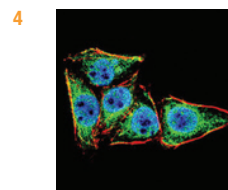
Cat# ALS17233
Adiponectin Antibody
Human kidney tissue



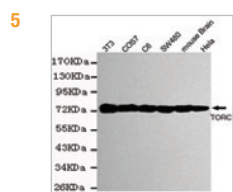
Cat# AP7979B
BDNF Antibody
Human brain tissue



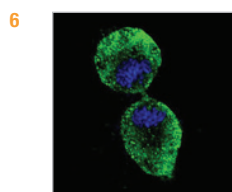
Cat# ALS12609
Ghrelin Antibody
Human colon tissue



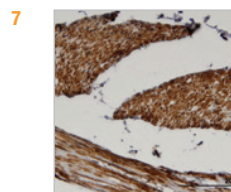
Cat# A02135a
LRP1 Antibody
HeLa cells



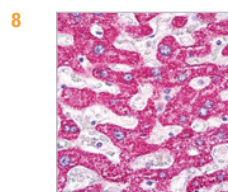
Cat# AP52758
TORC1 Antibody
Hela, mouse brain, SW480,
COS7, C6 and 3T3 cell lysates



Cat# AM1846B
ALDH1A1 Antibody
NCI-H460 cells



Cat# AT1989a
FADS1 Antibody
Human skeletal muscle tissue



Cat# ALS14896
TOMM22 Antibody
Human hepatocyte tissue

Stem Cell Antibodies (3,000+ products)

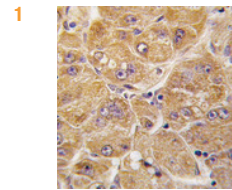
Stem cells are actively dividing pluripotent cells that retain the capacity to differentiate, when triggered by specific factors, into specialized post-mitotic cells. When unchallenged by differentiation factors, a stem cell maintains itself in a state of long-term self-renewal via mitotic division.

Because of their unique properties of self-regeneration and differentiation, stem cells are extensively studied with the hope they can be used as part of therapeutic regimens for neurodegenerative diseases, cancers, and other ailments. Early research efforts focused on intrinsic and extrinsic signals that drive a stem cell to differentiate into a given cell type.

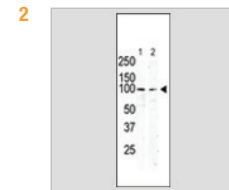
Abcepta's stem cell antibody portfolio includes not only well-characterized targets such as SOX2, OCT4, KLF4, NANOG, c-KIT, and LGR5, but also state-of-the-art targets emerging from cutting edge research. Visit abcepta.com to view Abcepta's extensive list of stem cell markers.

Stem Cell Antibodies

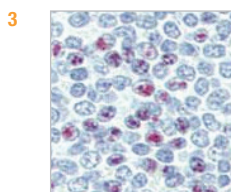
CAT. #	Antibody Target	Host	Application	Reactivity	
1	AP1465c	ALDH1A1 (Center)	Rb	WB, IHC, IF, FC, E	H
	AP1482d	CD9 (Center)	Rb	WB, IF, FC, E	H
2	AP7656a	c-KIT (N-term)	Rb	WB, IHC, FC, E	H, Pr
3	AP1485c	LIN28B (Center)	Rb	WB, IHC, IF, FC, E	H
4	AP1486c	NANOG (Center)	Rb	WB, IHC, IF, FC, E	H
	AP2758c	SOX1 (Center)	Rb	WB, IHC, IF, E	H
5	AM2725a	KLF4	M	WB, IF, FC, E	H
	AT4002a	SOX9 (M04)	M	WB, IF, E	H
	AT4060a	STAT1 (M01)	M	WB, IF, E	H
6	AT4513a	VIM (M01)	M	WB, IF, E	H
7	AT3384a	POU2F2 (M01)	M	WB, IHC, E	H
8	AT2084a	FOXA1	M	WB, IHC, IF	H



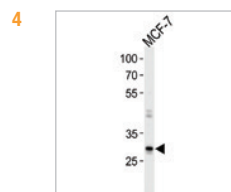
Cat# AP1465C
ALDH1A1 Antibody
Human hepatocarcinoma tissue



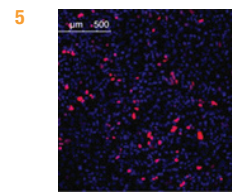
Cat# AP7656a
c-KIT Antibody
Serum-starved HeLa cell and primate testis lysates



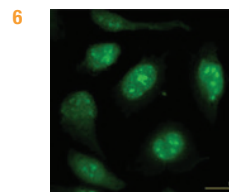
Cat# AP1485c
LIN28B Antibody
K562 cell lysate



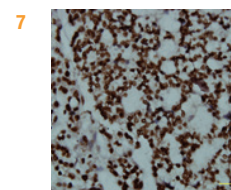
Cat# AP1486c
NANOG Antibody
MCF-7 cell lysate



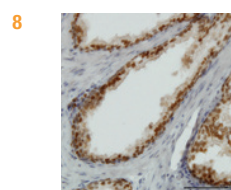
Cat# AM2725A
KLF4 Antibody
HeLa cells



Cat# AT4513a
VIM Antibody
Transfected 293T cells



Cat# AT3384a
POU2F2 Antibody
Human ovary, clear cell carcinoma tissue



Cat# AT2084a
FOXA1 Antibody
Human prostate tissue

Phosphospecific Antibodies and Protein Modification Antibodies

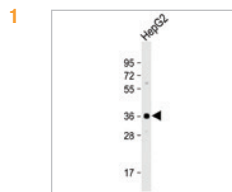
Abcepta's core portfolio includes antibodies targeting enzymes that modify other proteins. Our coverage encompasses target proteins involved in acetylation, glycosylation, methylation, phosphorylation, sumoylation, and ubiquitination. Included in this collection are antibodies against every known human kinase. Our website includes additional resources to assist in your research, including the highly cited SUMOPLOT[™] tool for predicting sumoylation sites on your protein.

Protein Modification Antibodies

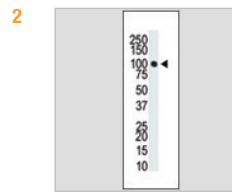
CAT. #	Antibody Target	Host	Application	Reactivity
1	AP7000d Aurora-C (N-term)	Rb	WB, IF, E	H
2	AP1034a Dnmt3a	Rb	WB, IHC, E	H
	AP2172a Mindbomb (N-term)	Rb	WB, IHC, IF, E	H
	AP7011a MSK2 (C-term R321)	Rb	WB, E	H, M
	AP7099h PARK8 (L955)	Rb	WB, IF, E	H, M
AP7025a PKC nu	Rb	WB, IHC, IF	H	
3	AP1224a SUMO2/3 (C-term)	Rb	WB, IHC-P, IF, E	H, M
4	AP2104a SMURF1 (N-term)	Rb	WB, IHC-P, E	H, M

Phospho-Specific Antibodies

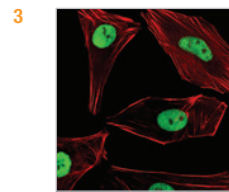
CAT. #	Antibody Target	Host	Application	Reactivity
5	AP3051A Phospho-CDC25A(T507)	Rb	WB, IHC-P, IF, E	H
	AP3115a Phospho-HIST1H3B3(S10)	Rb	DB, IHC-P, WB, E	H
	AP3249a Phospho-SMAD3(S208)	Rb	IF, DB, E	H
	AP3251a Phospho-SMAD4(T277)	Rb	IF, DB, IHC-P, E	H
6	AP3261a Phospho-STAT3(Y705)	Rb	WB, IHC-P, E	H
7	AP3415a Phospho-TSC2(S939)	W	DB, IF, E	H
	AP3301a Phospho-LC3C(S12)	Rb	WB, DB, E	H
	AP2104a SMURF1 (N-term)	Rb	WB, IHC-P, E	H, Ms
8	AP3434a Phospho-AKT1(S473)	Rb	WB, DB, E	H
	AP3607a Bi-Phospho-ERK1/2(T202/Y204)	Rb	WB, DB, E	H



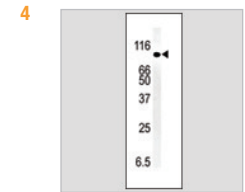
Cat# AP7000D
Aurora-C Antibody
HepG2 whole cell lysate



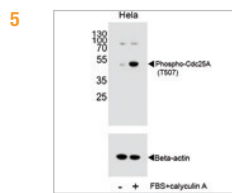
Cat# AP1034a
Dnmt3a Antibody
T47-D cell lysate



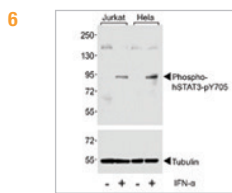
Cat# AP1224a
SUMO2/3 Antibody
SH-SY5Y cells



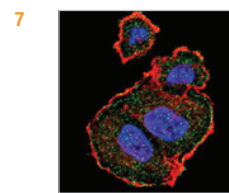
Cat# AP2104a
SMURF1 Antibody
Mouse kidney tissue lysate



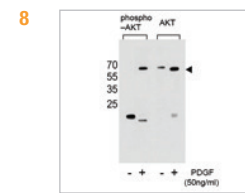
Cat# AP3051A
Phospho-CDC25A (T507)
Antibody HeLa cell lysate
Untreated or treated with calyculin A



Cat# AP3261a
Phospho-STAT3 (Y705) Antibody
Jurkat and HeLa cell lysates
Untreated or treated with IFN-α



Cat# AP3415a
Phospho-TSC2(S939) Antibody
MCF-7 cells



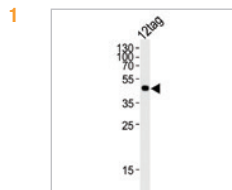
Cat# AP3434a
Phospho-AKT1 (S473) Antibody
NIH-3T3 cell lysate
Untreated or treated with PDGF

Tag Specific Antibodies

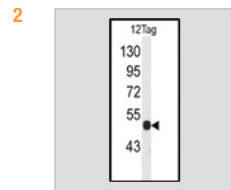
Abcepta offers a suite of highly specific antibodies for epitope tags. Tagged proteins have made isolation, purification, and detection processes easier than ever before, and are ubiquitous tools in research laboratories around the world. Due to the wide spread use of this technology, Abcepta has developed both polyclonal and monoclonal antibodies against an array of protein tags: B tag, FLAG, GFP, GST, HA Tag, His Tag, Myc Tag, Protein-C and VSV-g.

TAG Antibodies

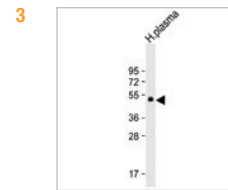
CAT. #	Antibody Target	Host	Application	
	AP1012a	HA Tag	Rb	WB, IF, CHIP, E
1	AP1013a	FLAG Tag	Rb	WB, E
2	AP1016a	VSV-g Tag	Rb	WB, E
3	AP1017a	Protein-C	Rb	WB, E
	AP1298a	GST	Rb	WB, E
4	AM1008a	HA Tag	M	WB, E
5	AM1010a	HIS Tag	M	WB, E
6	AM1007a	Myc Tag	M	WB, E
7	AM1011a	GST Tag	M	WB, E
8	AM1009a	GFP Tag	M	WB, E



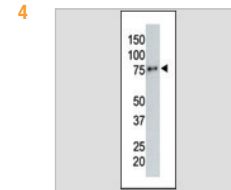
Cat# AP1013a
FLAG tag antibody (DYKDDDDK)
Recombinant Protein



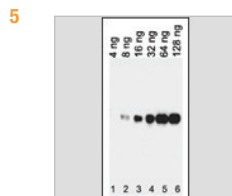
Cat# AP1016a
VSV-g Tag Antibody
Recombinant Protein



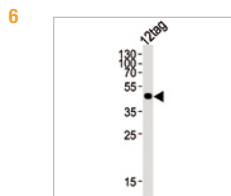
Cat# AP1017a
Protein C Antibody
Human plasma whole cell lysate



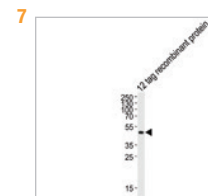
Cat# AM1008a
HA Tag Antibody
Recombinant protein in COS7 cells



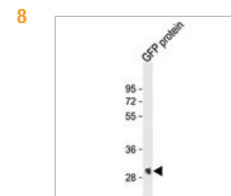
Cat# AM1010a
HIS Tag Antibody
Recombinant protein in bacterial lysates



Cat# AM1007a
Myc Tag Antibody
Recombinant protein in bacterial lysates



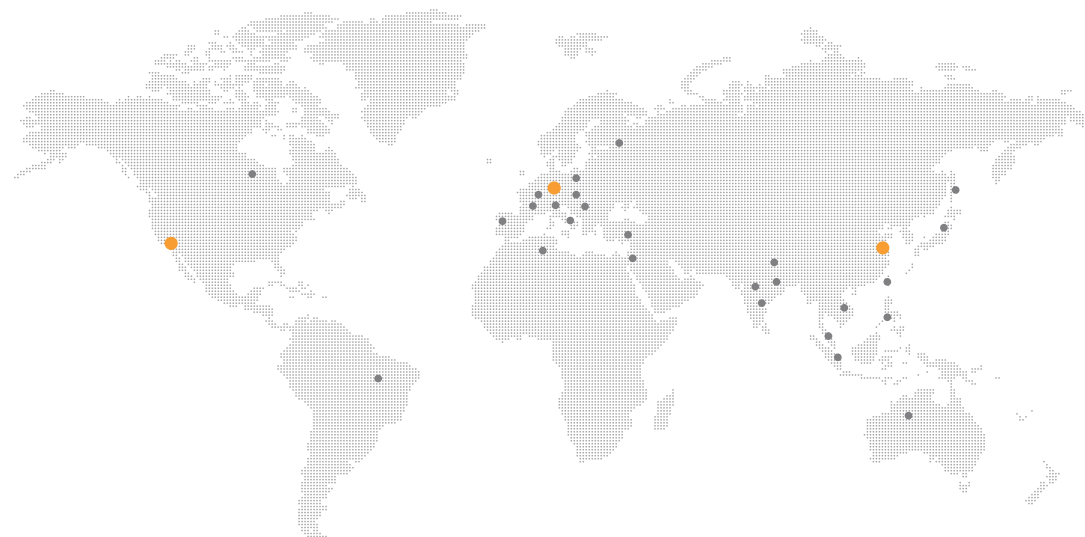
Cat# AM1011a
GST Tag Antibody
Recombinant protein in bacterial lysates



Cat# AM1009a
GFP Tag Antibody
Recombinant protein in bacterial lysates

Abcepta: A Global Company

Abcepta truly has a global reach. With offices in the US and China, and a leading network of distributors in Europe and around the world, our products can be at your bench as fast as the next day. Review our list below to find the distributor for your region and take advantage of the products and services that Abcepta has to offer.



USA Headquarters

Abcepta, Inc.
10320 Camino Santa Fe
Suite G, San Diego, CA
92121 USA
Tel: (888) 735-7227
(858) 875-1900
Fax: (858) 875-1999
Email: sales@abcepta.com

China

Abcepta Biotech Ltd. Co.
388 Xiping Street Ascendas Park
Building 2 Suzhou Industrial Park,
Suzhou city, Jiangsu Province, China,
215104
Tel: +86 512 88856768
Tel: +86 512 88856768
Fax: +86 512 88856768
Email: orders-china@abcepta.com

Abcepta Distributors

North & South America

Brazil

Lab Research do Brasil Ltda
Tel: +55 11 3544-4891
Email: vendas@lab-research.com

LGC Biotechnologia Ltda
Tel: +55 11 4614 8070
Email: diretoria.geral@lgcbio.com.br

Canada

Cedarlane Labs
Tel: +1 (800) 268-5058
Email: custserv@cedarlanelabs.com

United States

Abcepta, Inc.
Tel: (888) 735-7227
Email: orders@abcepta.com

USA Headquarters
Tel: (888) 735-7227
Email: orders@abcepta.com

Cedarlane Labs
Tel: +1 (800) 721-1644
Email: service@cedarlanelabs.com

Europe

Austria

BIOZOL GmbH
Tel: +498937996666
Email: info@biozol.de

Hölzel Diagnostika Handels GmbH
Tel: +49 221 126 02 66
Email: info@hoelzel.de

VWR International GmbH
Tel: +01 97 002 0
Email: info@at.vwr.com

Divbio Science Europe
Tel: +31 (0)76 565 1680
Email: orders@divbio.eu

Belgium

Bio-Connect BV
Tel: +32 2 503 0348
Email: info@bio-connect.nl

EMELCA Bioscience
Tel: 0484 629 800
Email: info@emelcabio.com

VWR International BVBA
Tel: +016 385 011
Email: customerservice@be.vwr.com

Divbio Science Europe
Tel: +31 (0)76 565 1680
Email: orders@divbio.eu

Croatia

Bio-Kasztel
Tel: +36 1 3853887
Email: info@kasztel.hu

Divbio Science Italia
Tel: +39 350 035 1719
Email: info@divbio.it

Czech Republic

BARIA s.r.o.
Tel: +420 244 911 228
Email: info@baria.cz

VITRUM VWR s. r. o.
Tel: +420 321 570 321
Email: info@cz.vwr.com

Divbio Science Italia
Tel: +39 350 035 1719
Email: info@divbio.it

Denmark

Nordic BioSite ApS
Tel: 8844 8801
Email: www.nordicbiosite.com

VWR - Bie & Berntsen
Tel: +43 86 87 88
Email: info@dk.vwr.com

Divbio Science Europe
Tel: +31 (0)76 565 1680
Email: orders@divbio.eu

Estonia

Nordic BioSite OY
Tel: +46 (0)8 544 433 40
Email: info@nordicbiosite.com

Divbio Science Europe
Tel: +31 (0)76 565 1680
Email: orders@divbio.eu

Finland

Nordic BioSite OY
Tel: 020 7432 007
Email: www.nordicbiosite.com

VWR International Oy
Tel: +09 80 45 51
Email: info@fi.vwr.com

Divbio Science Europe
Tel: +31 (0)76 565 1680
Email: orders@divbio.eu

France

Interchim
Tel: 33 (0)4 70 03 73 06
Email: interbiotech@interchim.com

VWR International S.A.S.
Tel: +0 825 02 30 30 (0,15 EUR
TTC/min)
Email: info@fr.vwr.com

CliniSciences

Tel: +33(0)977400909
Email: info@clinisciences.com

Divbio Science Europe
Tel: +31 (0)76 565 1680
Email: orders@divbio.eu

Germany

BIOZOL GmbH
Tel: +498937996666
Email: info@biozol.de

Hölzel Diagnostika Handels GmbH
Tel: +49 221 126 02 66
Email: info@hoelzel.de

Antibodies-Online GmbH
Tel: +49 (0)241 95 163 153
Email: orders@antibodies-online.com

VWR International
Tel: +0800 702 00 07
Email: info@de.vwr.com

Divbio Science Europe
Tel: +31 (0)76 565 1680
Email: orders@divbio.eu

Greece

Interlab Ltd
Tel: +30 2106532220
Email: info@interlab.gr

Hungary

Bio-Kasztel
Tel: +36 1 3853887
Email: info@kasztel.hu

Divbio Science Italia
Tel: +39 350 035 1719
Email: info@divbio.it

Iceland

Nordic BioSite AB
Tel: +358 (0)20 7432 007
Email: info@nordicbiosite.com

Ireland

Antibody Resource
Tel: +44 1223 813746
Email: www.antibodyresource.com

VWR International Ltd
Tel: +01 88 22 222
Email: info@ie.vwr.com

Generon Ltd.
Tel: +44 (0)1753 866511
Email: info@generon.co.uk

Italy

DBA Italia s.r.l.
Tel: +39 02 26922300
Email: orders@dbaItalia.it

VWR International PBI S.r.l.
Tel: 2-3320311
Email: info@it.vwr.com

Divbio Science Italia
Tel: +39 350 035 1719
Email: info@divbio.it

Latvia

Nordic BioSite OY
Tel: +46 (0)8 544 433 40
Email: info@nordicbiosite.com

Divbio Science Europe
Tel: +31 (0)76 565 1680
Email: orders@divbio.eu

Lithuania

Nordic BioSite OY
Tel: +46 (0)8 544 433 40
Email: info@nordicbiosite.com

Divbio Science Europe
Tel: +31 (0)76 565 1680
Email: orders@divbio.eu

Luxembourg

Bio-Connect BV
Tel: +32 2 503 0348
Email: info@bio-connect.nl

EMELCA Bioscience
Tel: +31.618 407 397
Email: info@emelcambio.com

Divbio Science Europe
Tel: +31 (0)76 565 1680
Email: orders@divbio.eu

Netherlands

Bio-Connect BV
Tel: +31 (0)26 326 4450
Email: info@bio-connect.nl

EMELCA Bioscience
Tel: +31.618 407 397
Email: info@emelcambio.com

VWR International B.V.
Tel: +020 4808 400
Email: info@nl.vwr.com

Divbio Science Europe
Tel: +31 (0)76 565 1680
Email: orders@divbio.eu

Norway

Nordic BioSite AS P.b.
Tel: 2396 0418
Email: info@nordicbiosite.com

VWR International AS
Tel: 2290
Email: info@no.vwr.com

Divbio Science Europe
Tel: +31 (0)76 565 1680
Email: orders@divbio.eu

Poland

STI
Tel: +48 (61) 6417759
Email: office@sti.biz.pl

Divbio Science Italia
Tel: +39 350 035 1719
Email: info@divbio.it

Portugal

AbBcn S.L.
Tel: 902 220 246
Email: info@antibodybcn.com

VWR International - Material de Laboratório, Lda
Tel: +21 3600 770
Email: info@pt.vwr.com

Romania

Bio-Kasztel
Tel: +36 1 3853887
Email: info@kasztel.hu

Divbio Science Italia
Tel: +39 350 035 1719
Email: info@divbio.it

Serbia

Bio-Kasztel
Tel: +36 1 3853887
Email: info@kasztel.hu

Slovakia

BARIA s.r.o.
Tel: +420 244 911 228
Email: info@baria.cz

Divbio Science Italia
Tel: +39 350 035 1719
Email: info@divbio.it

Slovenia

Bio-Kasztel
Tel: +36 1 3853887
Email: info@kasztel.hu

Spain

AbBcn S.L.
Tel: 902 220 246
Email: info@antibodybcn.com

Abyntek Biopharma S.L.
Tel: (+34) 94 404 80 80
Email: info@abyntek.com

VWR International EuroLab S.L.
Tel: +902 222 897
Email: info@es.vwr.com

Sweden

Nordic Biosite AB
Tel: +358 (0)20 7432 007
Email: info@nordicbiosite.com

VWR International AB
Tel: +08 621 34 00
Email: info@se.vwr.com

Divbio Science Europe
Tel: +31 (0)76 565 1680
Email: orders@divbio.eu

Switzerland

LuBioScience GmbH
Tel: +41 41 417 02 80
Email: info@lubio.ch

VWR International GmbH
Tel: +044 745 13 13
Email: info@ch.vwr.com

Divbio Science Europe
Tel: +31 (0)76 565 1680
Email: orders@divbio.eu

United Kingdom

Stratech Scientific Ltd.
Tel: 0044 (0) 1638782600
Email: info@stratech.co.uk

Insight Biotechnology
Tel: 0800 073 3133
https://www.insightbio.com

Antibody Resource
Tel: +44 1223 813746
Email: orders@antibodyresource.com

VWR International Ltd
Tel: +0800 22 33 44
Email: uksales@uk.vwr.com

Asia/Pacific Rim**Australia**

Resolving Images Pty Ltd
Tel: +61 3 9470 4704
Email: sales@resolvingimages.com

Assay Matrix Pty Ltd
Tel: +61 405 701 981
Email: info@assaymatrix.com

China

China
Tel: +86 512 88856768
Email: sales@abcepta.com

Hong Kong

Gene Company Limited
Tel: (852) 2896-6283
Email: info@genehk.com

Onwon Trading Limited
Tel: (852) 2757-7569
Email: emily@onwon.com.hk

India

Discovery Bionics
Tel: 91 – 11-49064641
Email: sales@discoverybionics.com

Japan

Cosmo Bio Co., Ltd.
Tel: 81-3-5632-9610
Email: mail@cosmobio.co.jp

Funakoshi Inc.
Tel: 81-3-5684-1620
Email: reagent@funakoshi.co.jp

B-Bridge International, Inc.
Tel: 075-644-4160
Email: info@b-bridge.com

Malaysia

Precision Technologies Pte Ltd
Tel: +65 6273 4573
Email: scitech@pretech.com.sg

New Zealand

BioCore Pty Ltd
Tel: 1800 003 991
Email: sales@biocore.com.au

Singapore

Precision Technologies Pte Ltd.
Tel: +65 6273 4573
Email: scitech@pretech.com.sg

Research Instruments
Tel: +65 6571 0888
Email: info@ri.com.sg

South Korea

Sungwoo LifeScience
Tel: +82-2-985-7471
Email: order@sungwools.com

Kim & Friends Inc
Tel: +82-2-2647-6611
Email: knf.oversea1@gmail.com

Bioclone Corp.
Tel: +82-2-2690-0058
Email: bioclone@bioclone.co.kr

Taiwan

Kelowna International Scientific Inc.
Tel: +886-2-8972-0201
Email: kelowna@ms29.hinet.net

Bond Biotech
Tel: 886-4-2358-3959
Email: bond.biotech@gmail.com

Legends

VALIDATION

ChIP = Chromatin Immunoprecipitation

DB = Phospho-specific dot blot

E = Elisa

IF = Immunofluorescence

IHC = Immunohistochemistry

IP = Immunoprecipitation

WB = Western blot

SPECIFICITY

Gt = Goat

H = Human

M = Mouse

R = Rat

INTERLAB CO.,LTD
 Tel: +886 2 2736 7100
 Email: service@interlab.com.tw

Vietnam

Truong Bio, Inc.
 Tel: +84-8-3755-3648
 Email: info@truong.bio

Middle East

Israel

ADVANSYS Technologies for Life Ltd.
 Tel: +972 (0) 89417118
 Email: info@advansys.co.il

Pakistan

Life Technologies (India) Pvt Ltd
 Tel: +91 11 4220 8000
 Email: customerservice@lifetchindia.com

Turkey

Ardi Medikal Araştırma ve Diagnostik
 Ürünleri San. Tic. Ltd. Şti.
 Tel: +90 216 443 05 44
 Email: info@ardimed.com

Africa

South Africa

BIOCOM biotech
 Tel: +27 12 644 2795
 Email: info@biocombiotech.co.za

Divbio Science Africa

Tel: 087 820 5200
 Email: jason@divbio.africa

Central America

Central America

Lab Research do Brasil Ltda.
 Tel: 55 11 3544-4891
 Email: vendas@lab-research.com

Worldwide

Worldwide

Antibodies-Online GmbH
 Tel: +49 (0)241 95 163 153
 www.antibodies-online.com

Legends

VALIDATION

ChIP = Chromatin Immunoprecipitation
 DB = Phospho-specific dot blot
 E = Elisa
 IF = Immunofluorescence
 IHC = Immunohistochemistry
 IP= Immunoprecipitation
 WB = Western blot

SPECIFICITY

Gt = Goat
 H = Human
 M = Mouse
 R = Rat



USA Headquarters

Abcepta, Inc.
10320 Camino Santa Fe Suite G
San Diego, CA 92121 USA
Tel: (888) 735-7227
(858) 875-1900
Fax: (858) 875-1999
Email: sales@abcepta.com

China

Abcepta Biotech Ltd. Co.
388 Xinpings Street Ascendas Park Building 2
Suzhou Industrial Park
Jiangsu, China
Tel: +86 512 88856768
Tel: +86 512 88856768
Fax: +86 512 88856768
Email: orders-china@abcepta.com