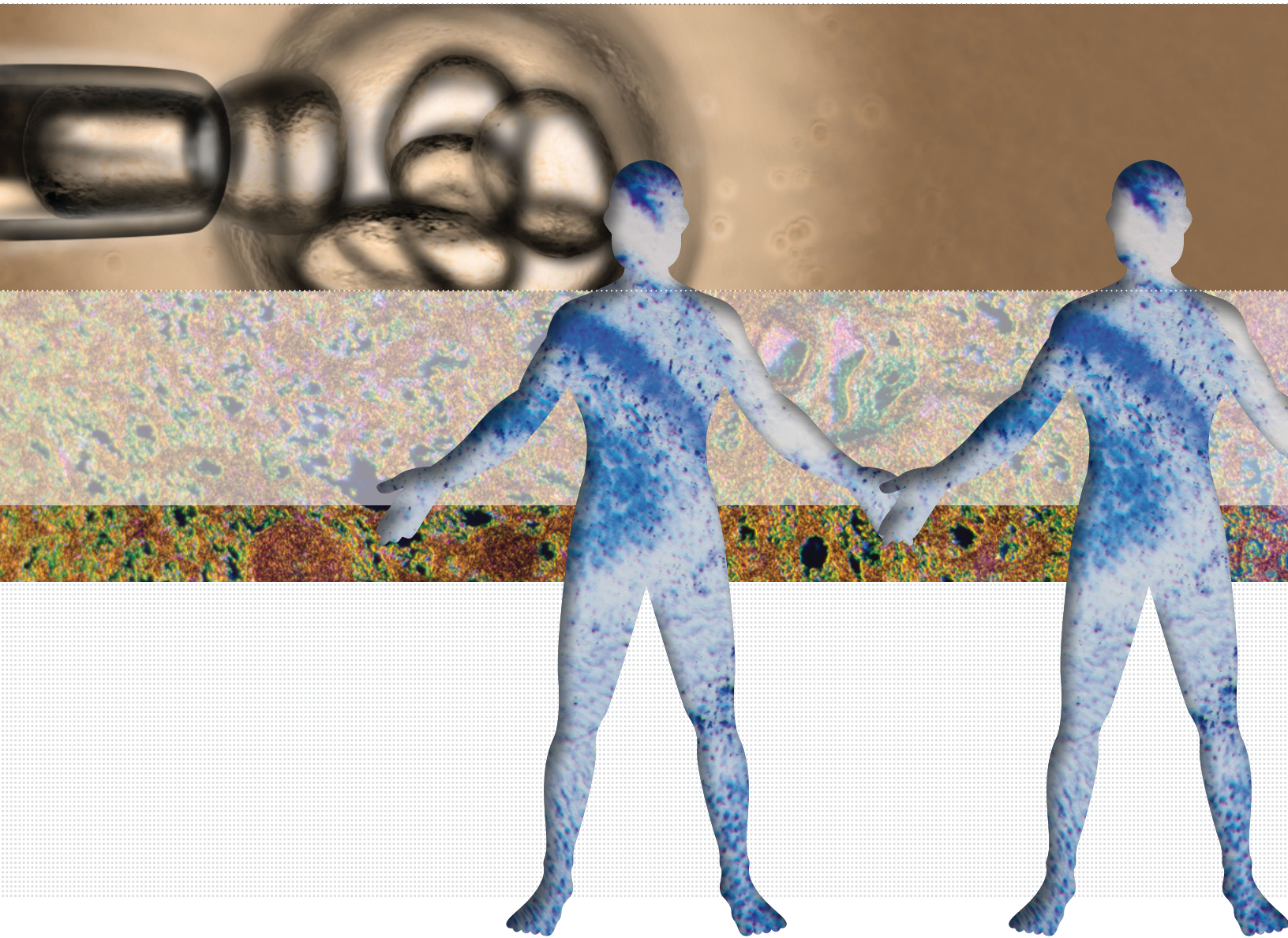


# Stem Cell Antibodies



# Abcepta: your partner in stem cell research

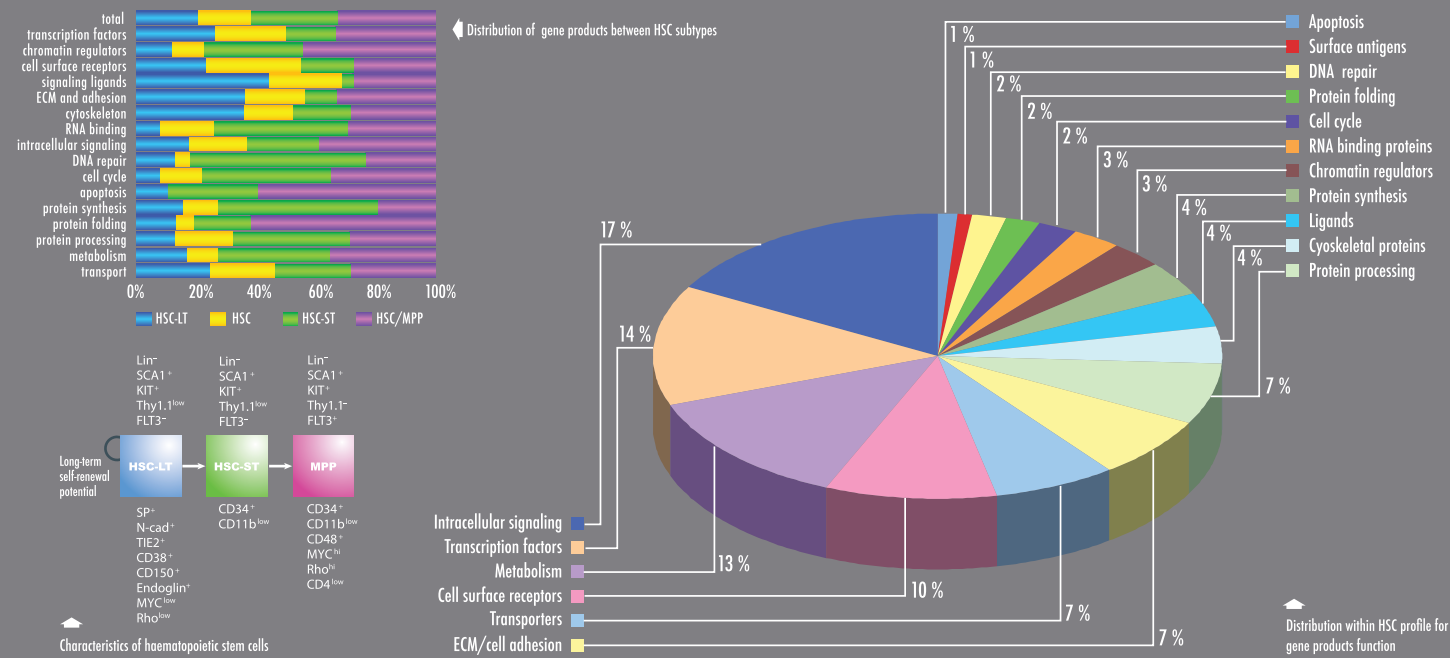
**At Abcepta, unsurpassed production capabilities translate into an extensive collection of antibodies focused on stem cell research, including popular targets such as SOX2, ALDH, OCT4, c-KIT, and NANOG, as well as the most recently discovered targets.**

Stem cells are actively dividing pluripotent cells that retain the capacity to differentiate under the right conditions into specialized post-mitotic cell types. In the absence of the specific triggers that are needed for a stem cell to differentiate into a skin, heart, or lung cell, or any other specialized cell types, it maintains itself in a state of long-term self-renewal via mitotic division. Because of their unique properties of self-regeneration and differentiation, stem cells are being evaluated as therapeutics for diseases such as neurodegenerative or muscular diseases, cancers, and others. Pressing questions in this rapidly evolving field concern the internal and external signals for cell differentiation and the specificity of such signals for differentiation into particular cell types. While individual transcription factors such as OCT4 and specific stem cell markers such as SOX2 have been characterized, the next step in stem cell research is to identify the hundreds of other genes that either play a critical role in stem cell biology, or are uniquely impacted within the stem cell environment. Abcepta's unsurpassed production capabilities and flexibility ensure access to the most state-of-the-art stem cell markers for your research.

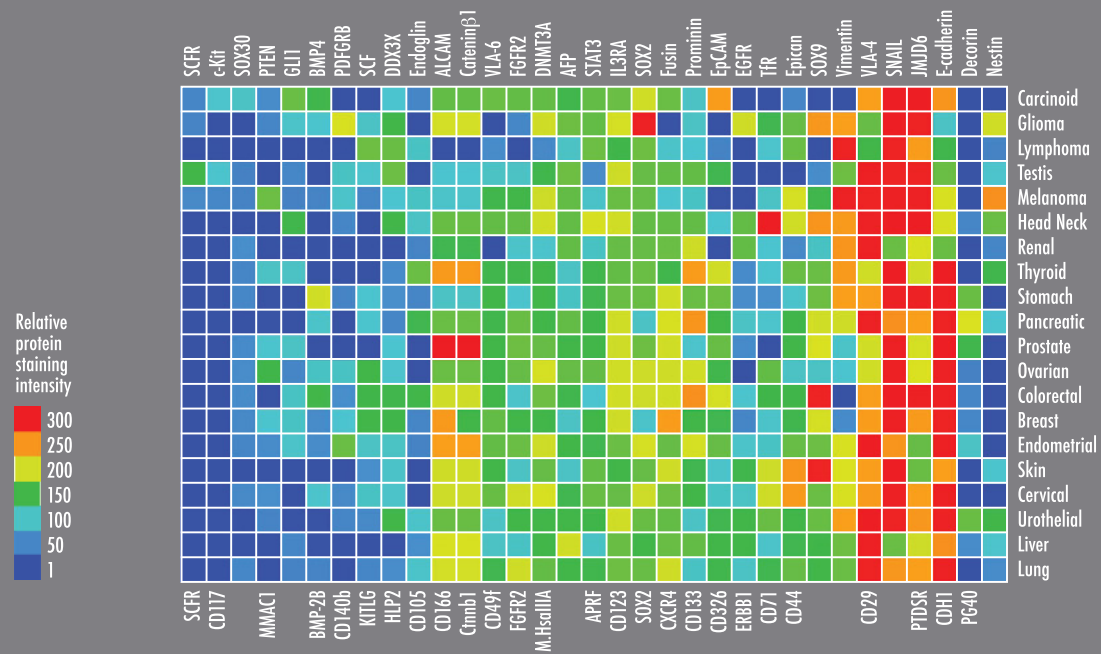
## Table of Contents

3	Abcepta and Stem Cells
5	Key Stem Cell Markers
6	<b>Product Focus</b>
6	SOX9 Antibodies OCT4
7	Antibodies NANOG
7	Antibodies LIN28B
8	Antibodies
8	c-KIT Antibodies KLF4
9-13	Antibodies <b>Additional Stem Cell Products</b>
13	<b>Legends</b>
14	<b>Stem Cell Literature Networks</b>

## Stem Cell Distribution



## Stem Cell Cancer Profile

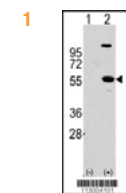


The images above are from the Abcepta Stem Cell Protein Survey wall chart, an overview of stem cell distribution, associations, and profiling. Request a FREE copy at [www.abcepta.com](http://www.abcepta.com).

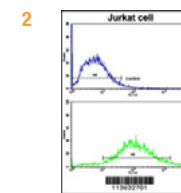
## Key Stem Cell Markers

Abcepta has one of the most extensive antibody collections of key stem cell markers. From OCT4, NANOG, and SOX9, Abcepta's premium selection serves as a vital tool for stem cell research.

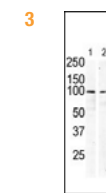
CAT. #	ANTIBODY	HOST	ISO	APP.	REACT.
1	AP1465c ALDH1A1 (Center)	Rb	plg	WB, IHC, IF, FC, E	H
2	AP1482d CD9 (Center)	Rb	plg	WB, IF, FC, E	H
3	AP7656a c-KIT (N-term)	Rb	plg	WB, IHC, FC, E	H, Pr
	AP1467c Latexin (Center)	Rb	plg	WB, IHC, FC, E	H
4	AP1485c LIN28B (Center)	Rb	plg	WB, IHC, IF, FC, E	H
5	AP1486c NANOG (Center)	Rb	plg	WB, IHC, IF, FC, E	H
6	AP2021a NEUROD1	Rb	plg	WB, IHC, IF, E	H
7	AP2020d Nestin (S1409)	Rb	plg	WB, IHC, FC, E	H
8	AP13842a POU2F2 (N-term)	Rb	plg	WB, E	H
9	AP2046a OCT4 (OCT3) (N-term)	Rb	plg	WB, IF, E	H
10	AM2048a SOX2	Ms	mlgG1	WB, IHC, IF, FC, E	H
11	AP1409a SOX9 (N-term)	Rb	plg	WB, IHC, IF, E	H
12	AP2739c Vimentin (Center)	Rb	plg	WB, IHC, E	H



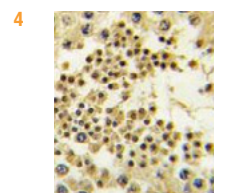
WB analysis of 293 cell lysates either non-transfected (lane 1) or transiently transfected with an exogenous ALDH1A1 gene (lane 2) using the ALDH1A1 (Center) pAb.



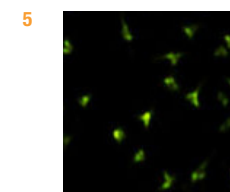
FC analysis of Jurkat cells using CD9 (Center) pAb.



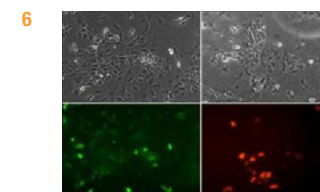
WB analysis using the c-KIT (N-term) pAb of serum-starved HeLa cell lysate (lane 1) and primate testis tissue lysate (lane 2).



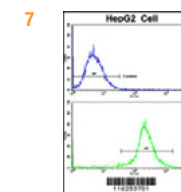
IHC analysis of human testis tissue stained with the LIN28B (Center) pAb.



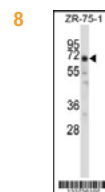
IF analysis of HeLa cells with NANOG (Center) pAb.



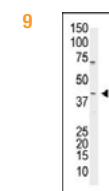
IF analysis of ES cells transfected with mouse NeuroD1 stained with the NeuroD1 pAb. (Kindly supplied by Sally Lowell, Edinburgh University, Edinburgh, UK).



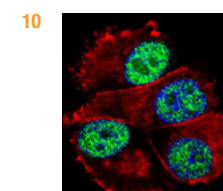
FC analysis of HepG2 cells using the Nestin (S1409) pAb.



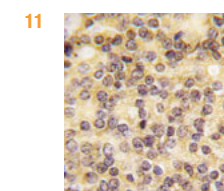
WB analysis of ZR-75-1 cell lysates with the POU2F2 (N-term) pAb.



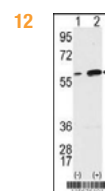
WB analysis of A375 cell lysates with the OCT4 (OCT3) (N-term) pAb.



Confocal IF analysis of MCF-7 cells with the SOX2 mAb (green). Actin filaments have been labeled with phalloidin (red) and DAPI was used as a counterstain (blue).



IHC analysis of human prostate carcinoma tissue with the SOX9 (N-term) pAb.



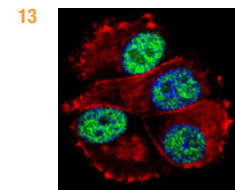
WB analysis of 293 cell lysates either non-transfected (lane 1) or transiently transfected with an exogenous Vimentin gene (lane 2) using the Vimentin (Center) pAb.

## SOX2 Antibodies

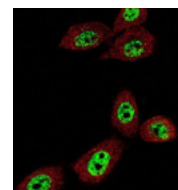
SRY (sex determining region Y)-box 2, also known as SOX2, is a transcription factor that is essential to maintain self-renewal of undifferentiated embryonic stem cells. SOX2 is one of the key transcription factors required in induced pluripotent stem cells. The primary role of SOX2 in induced pluripotent stem cells is controlling OCT4 expression, and these cells perpetuate their own expression when expressed concurrently.

Abcepta has a large selection of high quality SOX2 antibodies tested in a variety of applications. Provided here is a select listing of our best SOX antibodies. For a full listing visit [www.abcepta.com](http://www.abcepta.com).

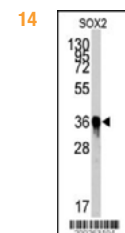
CAT. #	ANTIBODY	HOST	ISO	APP.	REACT.	
13	AM2048a	SOX2	Ms	mlgG1	WB, IHC, IF, FC, E	H
14	AM2048b	SOX2 (Ascites)	Ms	mlgG1	WB, IHC, FC, E	H
15	AP2048d	SOX2 (N-term)	Rb	plg	WB, IHC, IF, FC, E	H
	AP3737a	Phospho-SOX2 (pS250)	Rb	plg	IHC, FC, DB, E	H



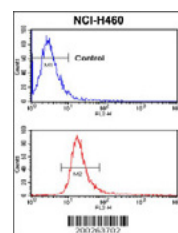
Confocal IF analysis of MCF-7 cells with the SOX2 mAb (green). Actin filaments have been labeled with phalloidin (red) and DAPI was used as a counterstain (blue).



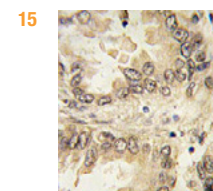
Confocal IF analysis of U-251MG cells with the SOX2 mAb (green). Actin filaments have been labeled with phalloidin (red).



WB analysis of lysates of cells expressing a recombinant SOX2 protein using the SOX2 mAb.



FC analysis of NCI-H460 cells using the SOX2 mAb.



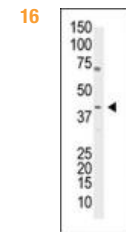
IHC analysis of human lung carcinoma tissue with the SOX2 (N-term) pAb.

## OCT4 Antibodies

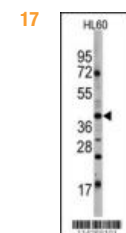
OCT4 (octamer-binding transcription factor 4) also known as POU5F1 (POU domain, class 5, transcription factor 1) is a protein that in humans is encoded by the POU5F1 gene. OCT4 is a homeodomain transcription factor of the POU family. This protein is critically involved in the self-renewal of undifferentiated embryonic stem cells. As such, it is frequently used as a marker for undifferentiated cells. OCT4 expression must be closely regulated; too much or too little will cause differentiation of the cells.

Abcepta provides great selection for OCT4 antibodies. View our select list below or view our full OCT4 catalog at [www.abcepta.com](http://www.abcepta.com).

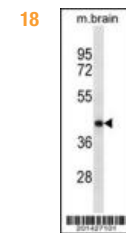
CAT. #	ANTIBODY	HOST	ISO	APP.	REACT.	
16	AP2046a	OCT4 (OCT3) (N-term)	Rb	plg	WB, IF, E	H
17	AP2046c	OCT4 (OCT3) (E125)	Rb	plg	WB, IHC, E	H
18	AM1967a	POU5F1 (Ascites)	Ms	mlgM	WB, E	H
19	AP3724a	Phospho-OCT4 (pS236)	Rb	plg	DB, E	H



WB analysis of A375 cell lysates with the OCT4 (OCT3) (N-term) pAb.



WB analysis of HL60 lysates with the OCT4 (OCT3) (E125) pAb.



WB analysis of mouse brain tissue lysates with the POU5F1 (Ascites) mAb.



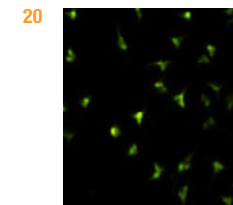
DB analysis of the Phospho-OCT4 (pS236) pAb.

## NANOG Antibodies

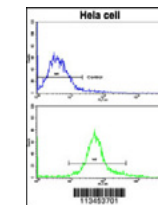
NANOG is a homeobox DNA-binding transcription factor, aptly named after the mythic Celtic land of the ever young. NANOG is expressed in embryonic stem cells and is key in maintaining their pluripotency. NANOG, in coordination with other important factors such as OCT4 and SOX2, is involved in maintaining embryonic stem cell proliferation and self-renewal and in preventing their differentiation.

Abcepta's stem cell antibody portfolio includes an excellent selection of NANOG antibodies. A partial list is below and a full listing is on the Abcepta website.

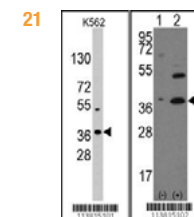
CAT. #	ANTIBODY	HOST	ISO	APP.	REACT.	
20	AP1486c	NANOG (Center)	Rb	plg	WB, IHC, IF, FC, E	H
21	AP1486a	NANOG (N-term)	Rb	plg	WB, IHC, E	H
22	AM1486b	NANOG	Ms	mlg1k	WB, E	H



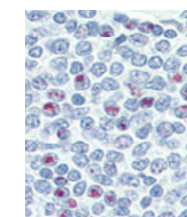
IF analysis of HeLa cells stained with the NANOG (Center) pAb.



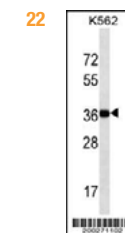
Flow cytometric analysis of HeLa cells using NANOG Antibody.



WB analysis of K562 cell line lysates using the NANOG (N-term) pAb (left panel). WB analysis of 293 cell lysates either non-transfected (lane 1) or transiently transfected with an exogenous NANOG gene (lane 2) using the NANOG (N-term) pAb (right panel).



IHC analysis of human spleen tissue with the NANOG (N-term) pAb (red). Nuclei have been counterstained with hematoxylin (blue).



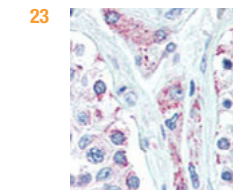
WB analysis of K562 cell line lysates using the NANOG mAb.

## LIN28B Antibodies

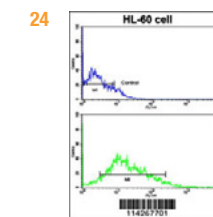
LIN28B encodes a microRNA-binding protein that binds to and enhances the translation of the IGF-2 (insulin-like growth factor 2) mRNA. LIN28B has also been shown to bind to the let-7 pre-microRNA and block its maturation. LIN28B is a marker of undifferentiated human embryonic stem cells and has been used to enhance the efficiency of the formation of induced pluripotent stem cells from human fibroblasts.

Abcepta's LIN28B antibody list includes many products with peer-reviewed citations. Visit [www.abcepta.com](http://www.abcepta.com) for a full listing or review the list below.

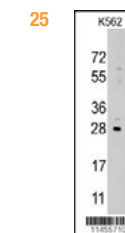
CAT. #	ANTIBODY	HOST	ISO	APP.	REACT.	
23	AP1485a	LIN28B (N-term)	Rb	plg	WB, IHC, FC, E	H
24	AP1485b	LIN28B (C-term)	Rb	plg	WB, FC, E	H
25	AP1485c	LIN28B (Center)	Rb	plg	WB, IHC, IF, FC, E	H



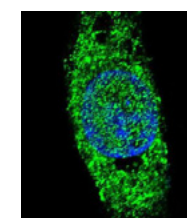
IHC analysis of human testis tissue with the LIN28B (N-term) pAb (red). Nuclei have been counterstained with hematoxylin (blue).



FC analysis of HL-60 cells using the LIN28B (C-term) pAb.



WB analysis of K562 cell line lysates using the LIN28B (Center) pAb.



Confocal IF analysis of HepG2 cells labeled with the LIN28B (C-term) pAb (green). DAPI was used as a nuclear counterstain (blue).

## c-KIT Antibodies

The proto-oncogene c-KIT, also known as mast/stem cell growth factor receptor or CD117, is a tyrosine kinase that has been involved in the mobilization of hematopoietic progenitors. Hematopoietic progenitor cells are normally present in the blood at low levels. When they are needed at higher levels in the circulating blood, progenitors migrate from the bone marrow into the bloodstream by a process called mobilization. Signaling through c-KIT has been shown to be critical to this process.

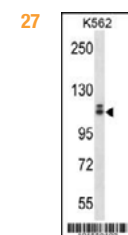
Abcepta has an extensive collection of c-KIT antibodies. View our list below or go to [www.abcepta.com](http://www.abcepta.com) for a full portfolio.

CAT. #	ANTIBODY	HOST	ISO	APP.	REACT.	
26	AP7656a	c-KIT (N-term)	Rb	plg	WB, IHC, FC, E	H, Pr
27	AP7656b	c-KIT (C-term)	Rb	plg	WB, E	H, M
28	AP7656h	c-KIT (C-term)	Rb	plg	WB, IHC, FC	H
	AP1484c	SCF (KITLG) (Center)	Rb	plg	WB, IHC, IF, FC, E	H

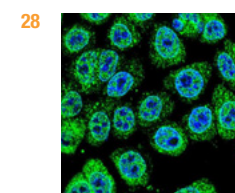


WB analysis of serum-starved HeLa cells (lane 1) and primate testis tissue lysate (lane 2) using the c-KIT (N-term) pAb.

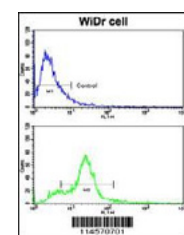
FC analysis of HeLa cells using the c-KIT (N-term) pAb.



WB analysis of K562 cell line lysates using the c-KIT (C-term) pAb.



Confocal IF analysis of HeLa cells labeled with the SCF (KITLG) (Center) pAb (green). DAPI was used as a nuclear counterstain (blue).



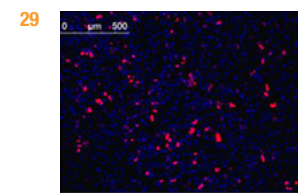
FC analysis of WiDr cells using the SCF (KITLG) (Center) pAb.

## KLF4 Antibodies

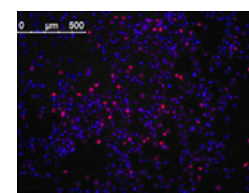
In embryonic stem cells, Krüppel-like factor 4 (KLF4) has been demonstrated to be a good marker of stem cell-like capacity in terms of self-renewal and pluripotency. KLF4 is a member of the Krüppel-like family of transcription factors, paralogues to the Drosophila melanogaster Krüppel gene. Members of this family have been extensively studied for their roles in cell proliferation, differentiation, and survival, notably in the context of cancerous cells.

KLF4 antibodies are readily available from Abcepta portfolio, which include numerous products with peer-reviewed citations. Go to [www.abcepta.com](http://www.abcepta.com) for a full listing.

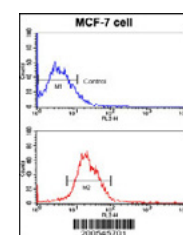
CAT. #	ANTIBODY	HOST	ISO	APP.	REACT.	
29	AM2725a	KLF4	Ms	mIgG1	WB, IF, FC, E	H, M
30	AP2725a	KLF4	Rb	plg	WB, IHC, E	H
	AP2725e	KLF4	Rb	plg	WB, IHC, E	H
	AP3652a	Phospho-KLF4 (pS245)	Rb	plg	DB, E	H



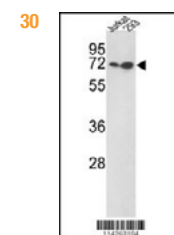
IF analysis of HeLa cells expressing human KLF4 labeled with the KLF4 mAb (red). DAPI was used as a nuclear counterstain (blue).



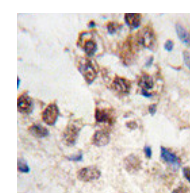
IF analysis of HeLa cells expressing mouse KLF4 labeled with the KLF4 mAb (red). DAPI was used as a nuclear counterstain (blue).



FC analysis of MCF-7 cells using the KLF4 mAb.



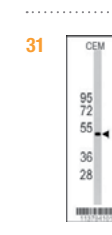
WB analysis of Jurkat (lane 1) and 293 (lane 2) cell lines with the KLF4 pAb.



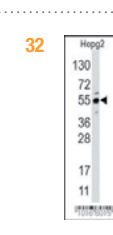
IHC analysis of human prostate carcinoma tissue using the KLF4 pAb.

## Embryonic Stem Cell Antibodies

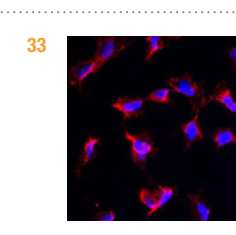
CAT. #	ANTIBODY	HOST	ISO	APP.	REACT.	
	AP2730b	NANOS (C-term)	Rb	plg	WB, IHC, E	H
	AP2046a	OCT4 (OCT3) (N-term)	Rb	plg	WB, IF, E	H
31	AP1408c	SHB (Center)	Rb	plg	WB, IHC, E	H
	AP1464c	SNX6 (Center)	Rb	plg	WB, E	H, M
	AM2048a	SOX2	Ms	mIgG1	WB, IHC, IF, FC, E	H
	AP7279c	TGIF (Center L223)	Rb	plg	WB, E	H
	AP1406a	IRF6 (N-term)	Rb	plg	WB, E	H
	AP1027a	JMJD1B (N-term)	Rb	plg	WB, E	H
	AP1028b	JMJD2D (C-term)	Rb	plg	WB, E	H
	AP1022b	JMJD3 (C-term)	Rb	plg	WB, IHC, E	M
33	AP1030a	JMJD4 (N-term)	Rb	plg	WB, E	H
	AP1031a	JMJD5 (C-term)	Rb	plg	WB, E	H
	AP1042a	JMJD6 (N-term)	Rb	plg	WB, E	H, M
	AM2725a	KLF4	Ms	mIgG1	WB, IF, FC, E	H
	AM1485a	LIN28a	Ms	mIgG1k	WB, IHC, IF, E	H
	AP7149a	MELK (Center)	Rb	plg	WB, E	H
	AP1486c	NANOG (Center)	Rb	plg	WB, IHC, IF, FC, E	H
33	AP1407b	NANOS1 (C-term)	Rb	plg	WB, IHC, IF, FC, E	H
	AP8401a	BDP1 (N-term)	Rb	plg	WB, E	H
	AP1482a	CD9 (N-term)	Rb	plg	WB, FC, E	H
	AP1483b	DDX3 (C-term)	Rb	plg	WB, IHC, E	H
	AP1403a	DDX4 (N-term)	Rb	plg	WB, IHC, E	H
34	AP1470a	ERAS (N-term)	Rb	plg	WB, IHC, IF, FC, E	H
	AP2064a	BMP9 (GDF2) (N-term)	Rb	plg	WB, IHC, E	H, M
	AP2066a	GDF3 (N-term)	Rb	plg	WB, IHC, E	H, M
	AP6133a	GREMLIN (C-term)	Rb	plg	WB, IHC, E	H, M



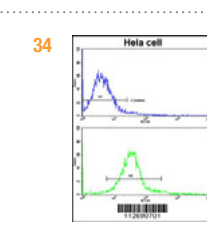
WB analysis of CEM cell lysates using the SHB (Center) pAb.



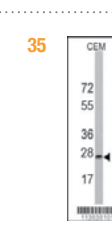
WB analysis of HepG2 cell lysates using the JMJD4 (N-term) pAb.



IF analysis of HeLa cells stained with the NANOS1 (C-Term) pAb (red). DAPI was used as a nuclear counterstain (blue).



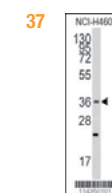
FC analysis of HeLa cells using the ERAS (N-term) pAb.



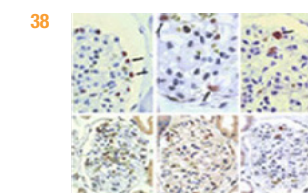
WB analysis of CEM cell lysates using the BARX1 (C-term) pAb.



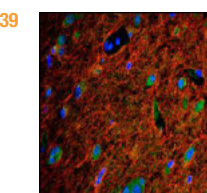
IHC analysis of human hepatocarcinoma using the NESTIN (S1409) pAb.



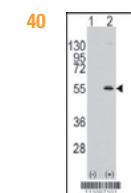
WB analysis of NCI-H460 cell lysates with the SOX1 (Center) pAb.



IHC analysis of human hepatocarcinoma using the BMPR1A (C-term) pAb.



IF analysis of cryosections of human brain tissues using the BMPR2 (N-term) pAb (red). Hoechst 33258 was used as a nuclear counterstain (blue). (Kindly supplied by Chunqing Zhang, Third Military Medical University, Chongqing, China).



WB analysis of 293 cell lysates either non-transfected (lane 1) or transiently transfected with an exogenous MEF2C gene (lane 2) using the MEF2C (S387) pAb.

## Neural Stem Cell Antibodies

CAT. #	ANTIBODY	HOST	ISO	APP.	REACT.	
35	AP2726b	BARX1 (C-term)	Rb	plg	WB, E	H
	AP7638a	FGFR3 (C-term)	Rb	plg	WB, IHC, E	H
	AP7639d	FGFR4	Rb	plg	WB, E	H
	AP2017a	GFAP (N-term)	Rb	plg	WB, IHC, E	H
	AP2769a	LHX2 (Y213)	Rb	plg	WB, E	H
	AP1426c	LMX1a (Center)	Rb	plg	WB, E	H, M
	AP2018b	MAP2 (C-term)	Rb	plg	WB, IHC, E	H
	AP2769a	MSX1 (N-term)	Rb	plg	WB, E	H
36	AP2020d	NESTIN (S1409)	Rb	plg	WB, IHC, FC, E	H
	AJ1552a	NOTCH1	Rb	mIg	WB, IHC, ICC	H, M
	AP6220a	NOTCH3 (C-term)	Rb	plg	WB, IHC, IF	H
	AP2053a	SLUG (Center)	Rb	plg	WB, IHC, IF, E	H, M
37	AP2758c	SOX1 (Center)	Rb	plg	WB, IHC, IF, E	H

## Mesenchymal Stem Cell Antibodies

CAT. #	ANTIBODY	HOST	ISO	APP.	REACT.	
38	AP2004b	BMPR1A (C-term)	Rb	plg	WB, IHC, IF, E	H, M
	AP2005b	BMPR1B (C-term)	Rb	plg	WB, IHC, E	H
39	AP2006a	BMPR2 (N-term)	Rb	plg	WB, IHC, IF, FC, E	H, M
	AP6294a	CD14 (N-term)	Rb	plg	WB, IHC, E	H
	AJ1163a	CD44	Rb	mIg	WB, IHC, FC, ICC	H
	AP2751a	DESMIN (T16)	Rb	plg	WB, IHC, E	H
	AP1404b	GATA4 (C-term)	Rb	plg	WB, E	H
	AP2060a	GDF10 (N-term)	Rb	plg	WB, IHC, E	H
40	AP6285a	MEF2C (S387)	Rb	plg	WB, IHC, E	H
	AP6809a	MTM1 (N-term)	Rb	plg	WB, IHC, E	H
	AP2002a	OSTEOCALCIN (N-term)	Rb	plg	WB, IHC, E	H
	AP7672b	ROR2 (C-term)	Rb	plg	WB, IHC, E	H



Additional Stem Cell Antibodies (cont.)

CAT. #	ANTIBODY	HOST	ISO	APP.	REACT.	
	AP7646a	FUCA2 (N-term)	Rb	plg	WB, IHC, E	H
	AP2785a	GADD45A (N-term)	Rb	plg	WB, E	H, M
	AP2062a	GDF15 (N-term)	Rb	plg	WB, IHC	H
59	AP2066a	GDF3 (N-term)	Rb	plg	WB, IHC, E	H, M
	AP2068a	GDF8 (N-term)	Rb	plg	WB, IHC, E	H
	AP2069a	GDF9 (N-term)	Rb	plg	WB, IHC, E	H
	AP2017b	GFAP (C-term)	Rb	plg	WB, E	H, M
	AP1405c	GNL3 (Center)	Rb	plg	WB, E	H
	AP1461b	GNPDA1 (C-term)	Rb	plg	WB, IHC, E	H
	AP6339c	GPC3 (Center)	Rb	plg	WB, IF	H, M
	AP6283a	GRB2 (Y209)	Rb	plg	WB, IHC, E	H
	AP2019b	ASCL1 (N-term)	Rb	plg	WB, IHC, E	H, M
60	AP7629e	ERBB2	Rb	plg	WB, IHC, IF, FC, E	H
	AP7629b	ERBB2 (C-term)	Rb	plg	WB, IHC, E	H
	AP6276a	HES1 (N-term T24)	Rb	plg	WB, E	H
	AP8140c	HK2 (Center)	Rb	plg	WB, IHC, E	H
	AP2778a	HNF4A (S142)	Rb	plg	WB, E	H
	AP1442a	HNMT (N-term)	Rb	plg	WB, IHC, IF, E	H
	AP7648c	HS2ST1 (Center)	Rb	plg	WB, IHC, E	H
61	AP7199b	HSPB1 (S15)	Rb	plg	WB, IHC, E	H
	AP1455c	IDE (Center)	Rb	plg	WB, IHC, E	H
	AP7651e	ILK (S246)	Rb	plg	WB, IHC, E	H
	AP7651d	ILK1 (S259)	Rb	plg	WB, IHC, E	H
	AP7651a	ILK1/ILK2 (N-term)	Rb	plg	WB, IHC, E	H
	AP6284c	INA (Center)	Rb	plg	WB, IHC, E	H
	AP1125b	JAK2 (C-term)	Rb	plg	WB, IF, E	H, M

Additional Stem Cell Antibodies (cont.)

CAT. #	ANTIBODY	HOST	ISO	APP.	REACT.	
	AP2715c	JUNCTOPHILIN3 (Center)	Rb	plg	WB, IHC, E	M
62	AP1484c	SCF (Center)	Rb	plg	WB, IHC, IF, FC, E	H
	AP7296a	LAP3 (N-term)	Rb	plg	WB, IHC, E	H
	AP2049b	LEFTYA (C-term)	Rb	plg	WB, E	H, M
	AP1423a	LHX6 (N-term)	Rb	plg	WB, IHC, E	H, M
63	AP7250c	MAPK1 (Center)	Rb	plg	WB, IHC, E	H
	AP1452c	MARCH8 (Center)	Rb	plg	WB, IHC, E	H
	AP2019a	ASCL1 (N-term)	Rb	plg	WB, IHC, E	H, M
	AP2767a	MCAM (Y641)	Rb	plg	WB, E	H
	AP7149a	MELK (Center)	Rb	plg	WB, E	H
64	AP1454a	METTL7A (N-term)	Rb	plg	WB, IHC, E	H
	AP1459a	MIPEP (N-term)	Rb	plg	WB, IHC, E	H
	AP6194a	MMP10 (C-term)	Rb	plg	WB, IHC, E	H, M
65	AP6196a	MMP12 (C-term)	Rb	plg	WB, IHC, IF, E	H, M
	AP6198a	MMP14 (N-term)	Rb	plg	WB, IHC, FC, E	H
	AP6200a	MMP16 (N-term)	Rb	plg	WB, IHC, E	H
	AP6206a	MMP25 (C-term)	Rb	plg	WB, E	H, M
	AP1407b	NANOS1 (C-term)	Rb	plg	WB, IHC, IF, FC, E	H
	AP2021b	NEUROD1 (C-term)	Rb	plg	WB, E	H, M
	AP2022a	NEUROG1 (N-term)	Rb	plg	WB, E	H
	AP2023b	NEUROG2 (C-term)	Rb	plg	WB, E	H, M
	AP2024a	NEUROG3 (N-term)	Rb	plg	WB, IHC, IF, E	H, M
	AP7596d	NOMO1 (S1205)	Rb	plg	WB, E	H
	AP2756a	NUMB (N-term G94)	Rb	plg	WB, E	H
	AP2719a	OLFM1 (N-term)	Rb	plg	WB, IHC, E	H

Additional Stem Cell Antibodies (cont.)

CAT. #	ANTIBODY	HOST	ISO	APP.	REACT.	
	AP6407c	DJ-1 (Center0)	Rb	plg	WB, E	H
66	AP1720a	PDGFA (N-term)	Rb	plg	WB, IHC, E	H
	AP1087a	PMAT (N-term)	Rb	plg	WB, IHC, E	H
	AP6408c	PXN (Center)	Rb	plg	WB, IHC, E	H
	AP1450c	PYGM (Center)	Rb	plg	WB, IHC	H
67	AP1428a	RAX (N-term)	Rb	plg	WB, IHC, E	H, M
	AP1446c	SCNM1 (Center)	Rb	plg	WB, IHC, E	H
	AP1408c	SHB (Center)	Rb	plg	WB, IHC, E	H
	AP2053b	SLUG (N-term K9)	Rb	plg	WB, E	H
	AP1443a	STC2 (N-term)	Rb	plg	WB, IHC, E	H, M
	AP1448b	STK39 (C-term)	Rb	plg	WB, IHC, E	H, M
	AP1441b	SWAP70 (C-term)	Rb	plg	WB, IHC, E	H
	AP2047a	TDGF1 (N-term)	Rb	plg	WB, IHC, E	H
	AP2760b	UGP2 (C-term)	Rb	plg	WB, IHC, E	H
68	AP2723b	WIF1 (C-term)	Rb	plg	WB, IHC, E	H
	AP2015a	XLKD1 (N-term)	Rb	plg	WB, IHC, E	H, M
	AP1412c	YBX2 (Center)	Rb	plg	WB, E	H
	AP2761a	ZIC3 (N-term)	Rb	plg	WB, IHC, E	H
	AP2722b	ZIC4 (C-term)	Rb	plg	WB, E	H

Abcepta offers an expansive collection of stem cell antibodies. Visit the Abcepta website for a full listing. Companion blocking peptides are available for all stem cell antibodies.

Abcepta provides one of the largest selections of phospho-specific stem cell antibodies available. Visit [www.abcepta.com](http://www.abcepta.com) to view the full listing.

Legends

APPLICATION (APP.)

DB = Phospho-specific Dot Blot  
 E = ELISA  
 IF = Immunofluorescence  
 IHC = Immunohistochemistry  
 WB = Western Blot

REACTIVITY (REACT.)

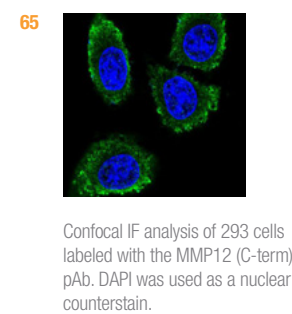
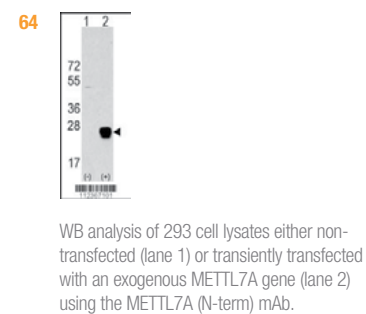
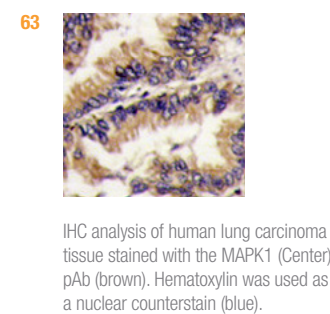
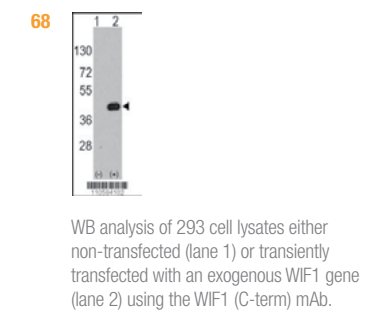
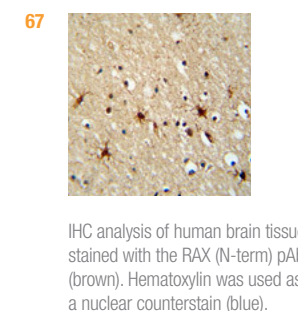
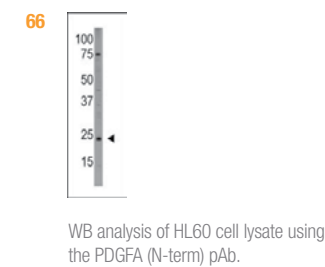
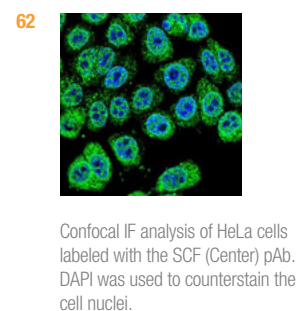
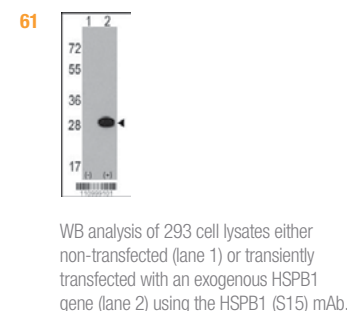
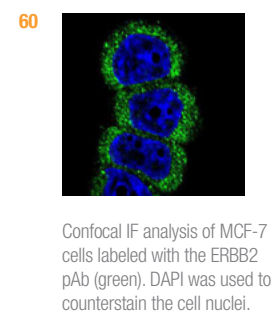
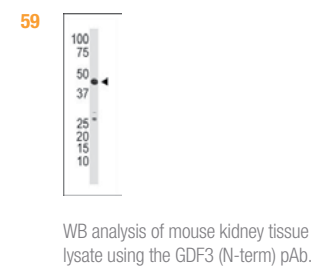
H = Human  
 M = Mouse  
 Pr = Primate

ANTIBODY

mAb = Monoclonal antibody  
 mIg = Monoclonal immunoglobulin  
 pAb = Polyclonal antibody  
 plg = Polyclonal immunoglobulin

HOST

Ms = Mouse  
 Rb = Rabbit

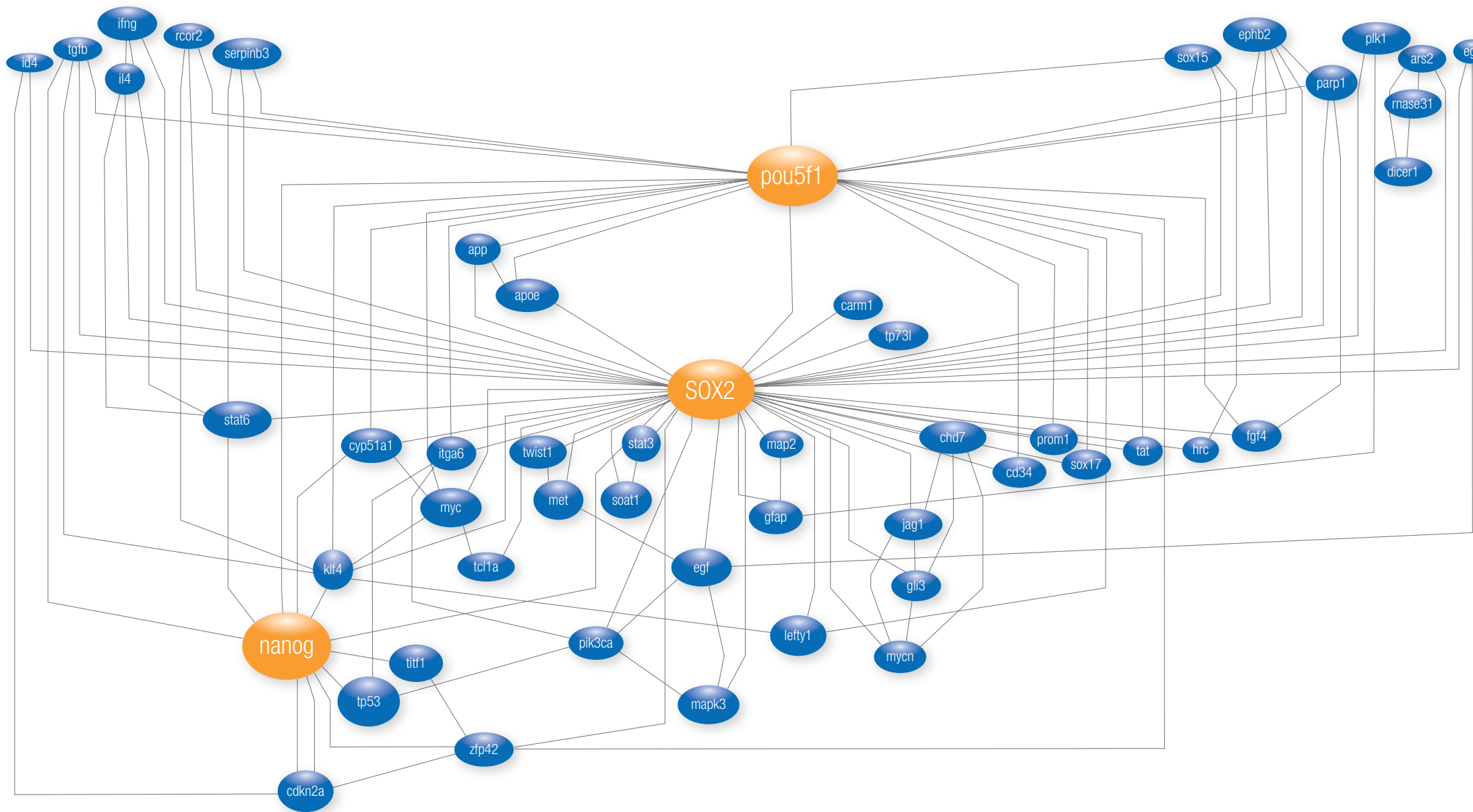


## Stem Cell Literature Networks

This SOX2 network was generated using Cytoscape V2.2, with a lexically-driven XML plug-in to the Agilent Literature Search, curated and color coded in Adobe Illustrator CS5.

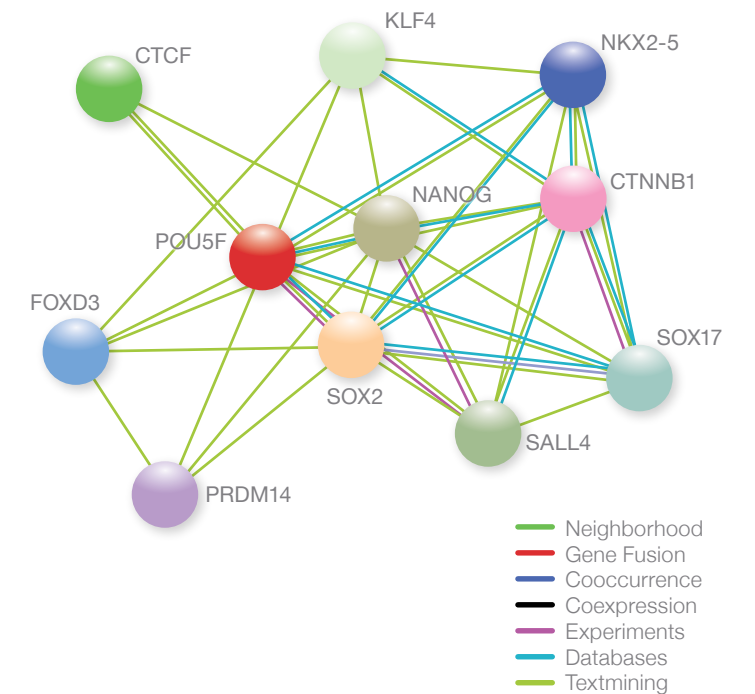
Abcepta's Gene Network Discovery Team has developed a powerful technology to perform sophisticated nearest-neighbor analysis of protein associations via large-scale mining of literature abstracts.

The result is a concise visual representation of the collective findings of scores of independent scientists, distilled from hundreds of peer-reviewed publication. Presented below is the gene network centered on SOX2, an important stem cell marker. Contact Abcepta today for a free custom network production centered on your gene of interest!



Signaling pathways are subnetworks of proteins that communicate via a series of interactions. We used a protein-protein interaction network compiled from the STRING database of known and predicted protein interactions. The STRING database aggregates protein-protein associations from over a dozen other pathway and protein interaction databases and combines these with computational predictions based on sequence, co-expression, literature mining, interactions between orthologous proteins, and other biological features to provide a comprehensive protein relationship resource<sup>(1)</sup>. Known physical binding interactions are weighted (scored) based on evidence from high-throughput experiments, genomic context, coexpression, and text mining. These weights (scores) allow interpretation of the array of biological features into the stem cell framework.

Scores: OCT4		Scores: SOX2		Scores: Nanog	
SOX2	0.999	POU5F1	0.999	POU5F1	0.994
NANOG	0.994	KLF4	0.994	SOX2	0.994
KLF4	0.993	NANOG	0.994	SALL4	0.993
CTCF	0.981	SMAD4	0.986	KLF4	0.993
SALL4	0.981	PAX6	0.986	ZFP42	0.972
SOX17	0.976	POU2F1	0.976	ISYNA1	0.970
FOXD3	0.976	FOXE3	0.973	LIN28A	0.966
NKX2-5	0.974	ISYNA1	0.971	FAM48A	0.965
PRDM14	0.973	CTNNB1	0.970	SMAD1	0.960
CTNNB1	0.971	STAT3	0.967	GATA6	0.953



1. Szklarczyk D, Franceschini A, Kuhn M, Simonovic M, Roth A, Minguéz P, Doerks T, Stark M, Müller J, Bork P, Jensen L.J., von Mering C. (2011) The STRING database in 2011: functional interaction networks of proteins, globally integrated and scored. Nucleic Acids Res. 39, D561-D568.





**USA Headquarters**

Abcepta, Inc.  
10320 Camino Santa Fe Suite G  
San Diego, CA 92121 USA  
Tel: (888) 735-7227  
(858) 875-1900  
Fax: (858) 875-1999  
Email: [sales@abcepta.com](mailto:sales@abcepta.com)

**China**

Abcepta Biotech Ltd. Co.  
388 Xiping Street Ascendas Park Building 2  
Suzhou Industrial Park  
Jiangsu, China  
Tel: +86 512 88856768  
Tel: +86 512 88856768  
Fax: +86 512 88856768  
Email: [orders-china@abcepta.com](mailto:orders-china@abcepta.com)