

Anti-CCS Picoband Antibody
Catalog # ABO10055**Specification**

Anti-CCS Picoband Antibody - Product Information

Application	WB, IHC-P
Primary Accession	O14618
Host	Rabbit
Reactivity	Human, Mouse, Rat
Clonality	Polyclonal
Format	Lyophilized

Description

Rabbit IgG polyclonal antibody for Copper chaperone for superoxide dismutase(CCS) detection. Tested with WB, IHC-P in Human;Mouse;Rat.

Reconstitution

Add 0.2ml of distilled water will yield a concentration of 500ug/ml.

Anti-CCS Picoband Antibody - Additional Information

Gene ID 9973

Other Names

Copper chaperone for superoxide dismutase, Superoxide dismutase copper chaperone, CCS

Calculated MW

29041 MW KDa

Application Details

Immunohistochemistry(Paraffin-embedded Section), 0.5-1 µg/ml, Human, By Heat

Western blot, 0.1-0.5 µg/ml, Human, Mouse, Rat

Subcellular Localization

Cytoplasm .

Tissue Specificity

Ubiquitous.

Protein Name

Copper chaperone for superoxide dismutase

Contents

Each vial contains 5mg BSA, 0.9mg NaCl, 0.2mg Na₂HPO₄, 0.05mg NaN₃.

Immunogen

A synthetic peptide corresponding to a sequence at the C-terminus of human CCS (174-209aa DADGRAIFRMEDEQLKVWDVIGRSLIIDEGEDDLGR), different from the related mouse sequence by six amino acids, and from the related rat sequence by seven amino acids.

Purification

Immunogen affinity purified.

Cross Reactivity

No cross reactivity with other proteins

Storage

At -20°C for one year. After reconstitution, at 4°C for one month. It can also be aliquotted and stored frozen at -20°C for a longer time. Avoid repeated freezing and thawing.

Anti-CCS Picoband Antibody - Protein Information

Name CCS ([HGNC:1613](#))

Function

Delivers copper to copper zinc superoxide dismutase (SOD1).

Cellular Location

Cytoplasm.

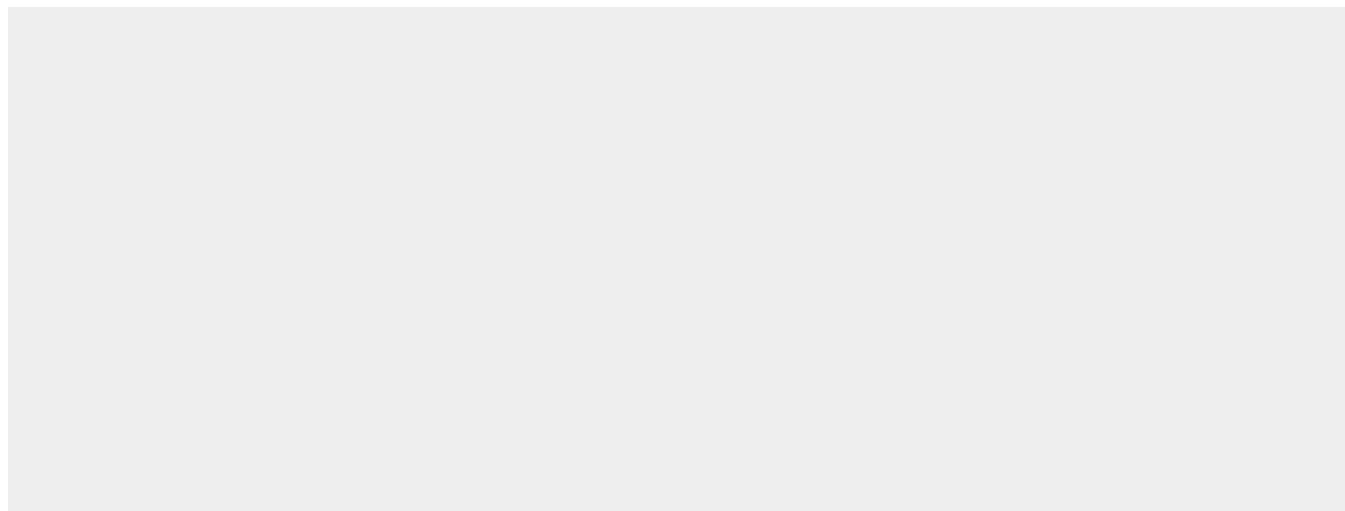
Tissue Location

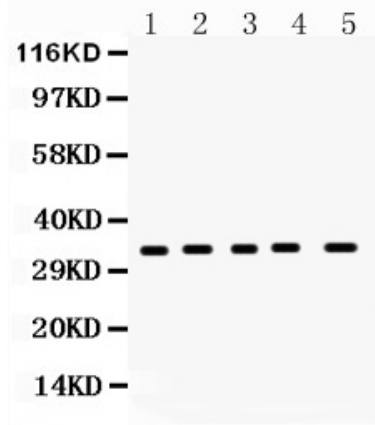
Ubiquitous.

Anti-CCS Picoband Antibody - Protocols

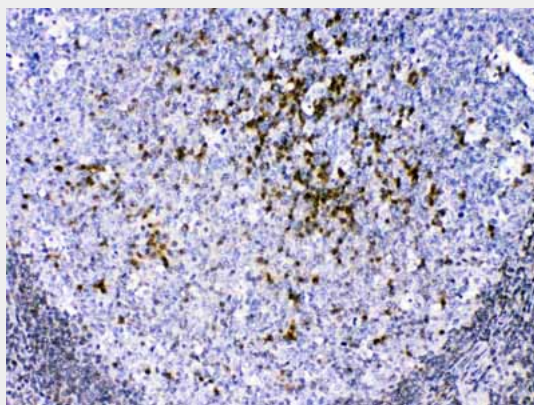
Provided below are standard protocols that you may find useful for product applications.

- [Western Blot](#)
- [Blocking Peptides](#)
- [Dot Blot](#)
- [Immunohistochemistry](#)
- [Immunofluorescence](#)
- [Immunoprecipitation](#)
- [Flow Cytometry](#)
- [Cell Culture](#)

Anti-CCS Picoband Antibody - Images



Western blot analysis of CCS expression in rat brain extract (lane 1), rat spleen extract (lane 2), mouse brain extract (lane 3), mouse spleen extract (lane 4) and 293T whole cell lysates (lane 5). CCS at 34KD was detected using rabbit anti- CCS Antigen Affinity purified polyclonal antibody (Catalog #ABO10055) at 0.5 μ g/mL. The blot was developed using chemiluminescence (ECL) method .



CCS was detected in paraffin-embedded sections of human tonsil tissues using rabbit anti- CCS Antigen Affinity purified polyclonal antibody (Catalog # ABO10055) at 1 μ g/mL. The immunohistochemical section was developed using SABC method .

Anti-CCS Picoband Antibody - Background

Copper chaperone for superoxide dismutase is a metalloprotein that is responsible for the delivery of Cu to superoxide dismutase (SOD1). In humans the protein is encoded by the CCS gene. And this gene is mapped to chromosome 11q13 by fluorescence in situ hybridization. The CCS protein is present in mammals and most eukaryotes including yeast. The structure of CCS is composed of three distinct domains that are necessary for its function. Although CCS is important for many organisms, there are CCS independent pathways for SOD1, and many species lack CCS all together, such as *C. elegans*.