

Anti-TFPI Picoband Antibody
Catalog # ABO10140**Specification**

Anti-TFPI Picoband Antibody - Product Information

Application	WB
Primary Accession	P10646
Host	Rabbit
Reactivity	Human
Clonality	Polyclonal
Format	Lyophilized

Description

Rabbit IgG polyclonal antibody for Tissue factor pathway inhibitor(TFPI) detection. Tested with WB in Human.

Reconstitution

Add 0.2ml of distilled water will yield a concentration of 500ug/ml.

Anti-TFPI Picoband Antibody - Additional Information

Gene ID 7035

Other Names

Tissue factor pathway inhibitor, TFPI, Extrinsic pathway inhibitor, EPI, Lipoprotein-associated coagulation inhibitor, LACI, TFPI, LACI, TFPI1

Calculated MW

35015 MW KDa

Application Details

Western blot, 0.1-0.5 µg/ml, Human

Subcellular Localization

Isoform Alpha: Secreted.

Tissue Specificity

Mostly in endothelial cells.

Protein Name

Tissue factor pathway inhibitor

Contents

Each vial contains 5mg BSA, 0.9mg NaCl, 0.2mg Na₂HPO₄, 0.05mg NaN₃.

Immunogen

E.coli-derived human TFPI recombinant protein (Position: N253-M304). Human TFPI shares 51.1% and 53.2% amino acid (aa) sequence identity with mouse and rat TFPI, respectively.

Purification

Immunogen affinity purified.

Cross Reactivity

No cross reactivity with other proteins.

Storage

At -20°C for one year. After reconstitution, at 4°C for one month. It can also be aliquotted and stored frozen at -20°C for a longer time. Avoid repeated freezing and thawing.

Anti-TFPI Picoband Antibody - Protein Information

Name TFPI

Synonyms LACI, TFPI1

Function

Inhibits factor X (X(a)) directly and, in a Xa-dependent way, inhibits VIIa/tissue factor activity, presumably by forming a quaternary Xa/LACI/VIIa/TF complex. It possesses an antithrombotic action and also the ability to associate with lipoproteins in plasma.

Cellular Location

[Isoform Alpha]: Secreted.

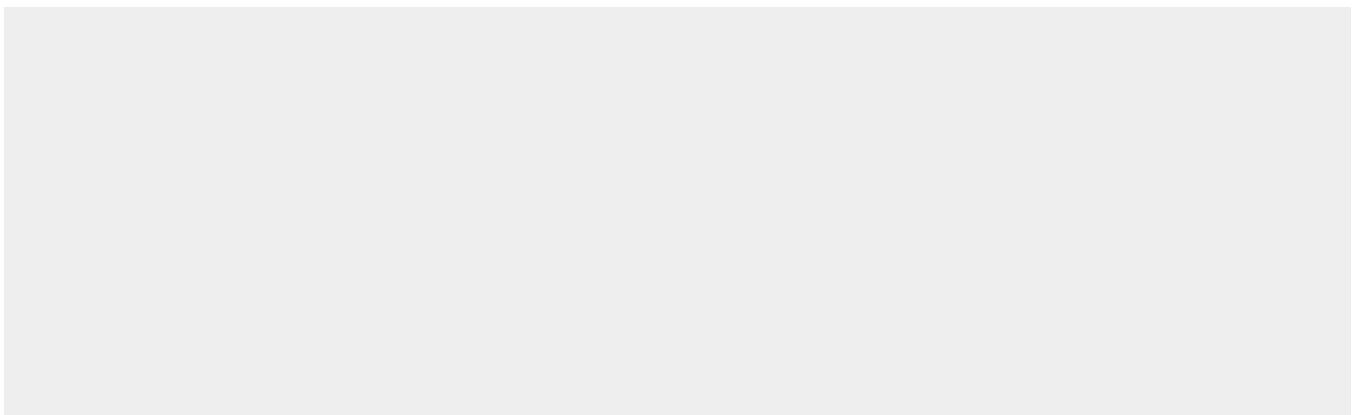
Tissue Location

Mostly in endothelial cells.

Anti-TFPI Picoband Antibody - Protocols

Provided below are standard protocols that you may find useful for product applications.

- [Western Blot](#)
- [Blocking Peptides](#)
- [Dot Blot](#)
- [Immunohistochemistry](#)
- [Immunofluorescence](#)
- [Immunoprecipitation](#)
- [Flow Cytometry](#)
- [Cell Culture](#)

Anti-TFPI Picoband Antibody - Images

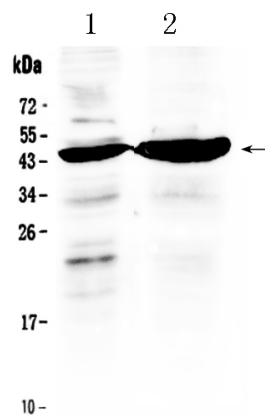


Figure 1. Western blot analysis of TFPI using anti- TFPI antibody (ABO10140). Electrophoresis was performed on a 5-20% SDS-PAGE gel at 70V (Stacking gel) / 90V (Resolving gel) for 2-3 hours. The sample well of each lane was loaded with 50ug of sample under reducing conditions. Lane 1: HELA whole Cell lysates, Lane 2: MCF-7 whole cell lysates. After Electrophoresis, proteins were transferred to a Nitrocellulose membrane at 150mA for 50-90 minutes. Blocked the membrane with 5% Non-fat Milk/ TBS for 1.5 hour at RT. The membrane was incubated with rabbit anti- TFPI antigen affinity purified polyclonal antibody (Catalog # ABO10140) at 0.5 μ g/mL overnight at 4°C, then washed with TBS-0.1%Tween 3 times with 5 minutes each and probed with a goat anti-rabbit IgG-HRP secondary antibody at a dilution of 1:10000 for 1.5 hour at RT. The signal is developed using an Enhanced Chemiluminescent detection (ECL) kit with Tanon 5200 system. A specific band was detected for TFPI at approximately 45KD. The expected band size for TFPI is at 35KD.

Anti-TFPI Picoband Antibody - Background

TFPI (Tissue factor pathway inhibitor) also known as EPI, LACI, TFI and TFPT1 is a single-chain polypeptide which can reversibly inhibit Factor Xa (Xa) and Thrombin (Factor IIa). While Xa is inhibited, the Xa-TFPI complex can subsequently also inhibit the FVIIa-tissue factor complex. TFPI contributes significantly to the inhibition of Xa in vivo, despite being present at concentrations of only 2.5 nM. The gene for TFPI is located on chromosome 2q31-q32.1, and has nine exons which span 70 kb. TFPI has a relative molecular mass of 34,000 to 40,000 depending on the degree of proteolysis of the C-terminal region.