

Anti-Myelin PLP Picoband Antibody
Catalog # ABO10142**Specification**

Anti-Myelin PLP Picoband Antibody - Product Information

Application	WB
Primary Accession	P60201
Host	Rabbit
Reactivity	Human, Mouse, Rat
Clonality	Polyclonal
Format	Lyophilized

Description

Rabbit IgG polyclonal antibody for Myelin proteolipid protein (PLP1) detection. Tested with WB in Human; Mouse; Rat.

Reconstitution

Add 0.2ml of distilled water will yield a concentration of 500ug/ml.

Anti-Myelin PLP Picoband Antibody - Additional Information

Gene ID 5354

Other Names

Myelin proteolipid protein, PLP, Lipophilin, PLP1, PLP

Calculated MW

30077 MW KDa

Application Details

Western blot, 0.1-0.5 µg/ml, Human, Mouse, Rat

Subcellular Localization

Cell membrane ; Multi-pass membrane protein . Myelin membrane . Colocalizes with SIRT2 in internodal regions, at paranodal axoglial junction and Schmidt-Lanterman incisures of myelin sheath .

Protein Name

Myelin proteolipid protein

Contents

Each vial contains 5mg BSA, 0.9mg NaCl, 0.2mg Na₂HPO₄, 0.05mg Na₃N.

Immunogen

A synthetic peptide corresponding to a sequence at the N-terminus of human Myelin PLP (37-70aa HEALTGTEKLIETYFSKNYQDYELINVIHAFQY), identical to the related mouse and rat sequences.

Purification

Immunogen affinity purified.

Cross Reactivity

No cross reactivity with other proteins.

Storage

At -20°C for one year. After reconstitution, at 4°C for one month. It can also be aliquotted and stored frozen at -20°C for a longer time. Avoid repeated freezing and thawing.

Anti-Myelin PLP Picoband Antibody - Protein Information

Name PLP1

Synonyms PLP

Function

This is the major myelin protein from the central nervous system. It plays an important role in the formation or maintenance of the multilamellar structure of myelin.

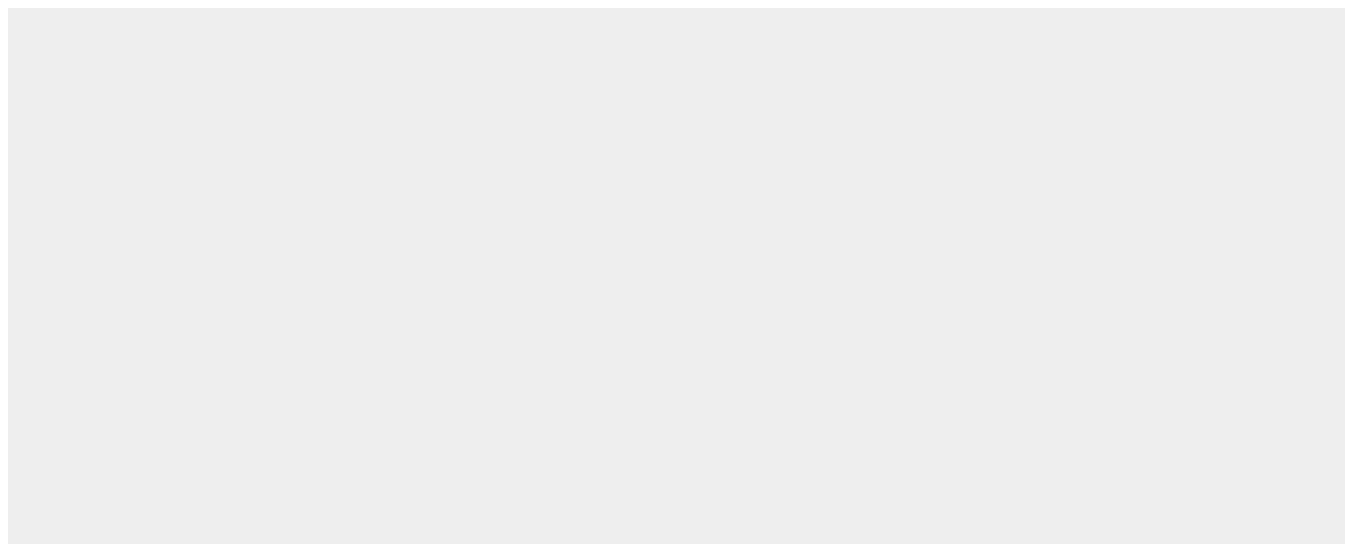
Cellular Location

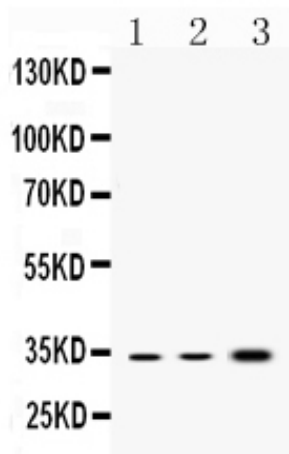
Cell membrane; Multi-pass membrane protein. Myelin membrane. Note=Colocalizes with SIRT2 in internodal regions, at paranodal axoglial junction and Schmidt-Lanterman incisures of myelin sheath.

Anti-Myelin PLP Picoband Antibody - Protocols

Provided below are standard protocols that you may find useful for product applications.

- [Western Blot](#)
- [Blocking Peptides](#)
- [Dot Blot](#)
- [Immunohistochemistry](#)
- [Immunofluorescence](#)
- [Immunoprecipitation](#)
- [Flow Cytometry](#)
- [Cell Culture](#)

Anti-Myelin PLP Picoband Antibody - Images



Western blot analysis of Myelin PLP expression in rat brain extract (lane 1), mouse brain extract (lane 2) and SHG-44 whole cell lysates (lane 3). Myelin PLP at 34KD was detected using rabbit anti- Myelin PLP Antigen Affinity purified polyclonal antibody (Catalog # ABO10142) at 0.5 μ g/mL. The blot was developed using chemiluminescence (ECL) method .

Anti-Myelin PLP Picoband Antibody - Background

Proteolipid protein 1 (PLP1) is a form of myelin proteolipid protein (PLP). This gene is mapped to Xq22.2. And this gene encodes a transmembrane proteolipid protein that is the predominant component of myelin. The encoded protein may play a role in the compaction, stabilization, and maintenance of myelin sheaths, as well as in oligodendrocyte development and axonal survival. Mutations in this gene cause Pelizaeus-Merzbacher disease and spastic paraplegia type 2. Alternatively splicing results in multiple transcript variants, including the DM20 splice variant.