

**Anti-CPM Picoband Antibody**  
**Catalog # ABO10202****Specification**

---

**Anti-CPM Picoband Antibody - Product Information**

Application	WB
Primary Accession	<a href="#">P14384</a>
Host	Rabbit
Reactivity	Human
Clonality	Polyclonal
Format	Lyophilized

**Description**

Rabbit IgG polyclonal antibody for Carboxypeptidase M(CPM) detection. Tested with WB in Human.

**Reconstitution**

Add 0.2ml of distilled water will yield a concentration of 500ug/ml.

**Anti-CPM Picoband Antibody - Additional Information**

**Gene ID** 1368

**Other Names**

Carboxypeptidase M, CPM, 3.4.17.12, CPM

**Calculated MW**

50514 MW KDa

**Application Details**

Western blot, 0.1-0.5 µg/ml, Human<br>

**Subcellular Localization**

Cell membrane ; Lipid-anchor, GPI-anchor .

**Protein Name**

Carboxypeptidase M

**Contents**

Each vial contains 5mg BSA, 0.9mg NaCl, 0.2mg Na<sub>2</sub>HPO<sub>4</sub>, 0.05mg Na<sub>3</sub>.

**Immunogen**

A synthetic peptide corresponding to a sequence at the C-terminus of human CPM (286-316aa KYPREEKLPSFWNNKASLIEYIKQVHLGVK), different from the related mouse sequence by two amino acids.

**Purification**

Immunogen affinity purified.

**Cross Reactivity**

No cross reactivity with other proteins.

**Storage**

At -20°C for one year. After reconstitution, at 4°C for one month. It can also be aliquotted and stored frozen at -20°C for a longer time. Avoid repeated freezing and thawing.

**Anti-CPM Picoband Antibody - Protein Information****Name** CPM**Function**

Specifically removes C-terminal basic residues (Arg or Lys) from peptides and proteins. It is believed to play important roles in the control of peptide hormone and growth factor activity at the cell surface, and in the membrane-localized degradation of extracellular proteins.

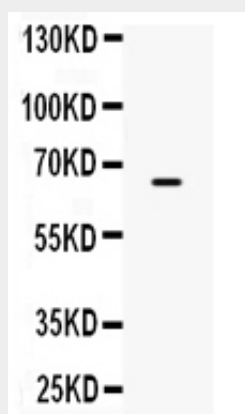
**Cellular Location**

Cell membrane; Lipid-anchor, GPI-anchor

**Anti-CPM Picoband Antibody - Protocols**

Provided below are standard protocols that you may find useful for product applications.

- [Western Blot](#)
- [Blocking Peptides](#)
- [Dot Blot](#)
- [Immunohistochemistry](#)
- [Immunofluorescence](#)
- [Immunoprecipitation](#)
- [Flow Cytometry](#)
- [Cell Culture](#)

**Anti-CPM Picoband Antibody - Images**

Western blot analysis of CPM expression in HEPG2 whole cell lysates (lane 1). CPM at 65KD was detected using rabbit anti- CPM Antigen Affinity purified polyclonal antibody (Catalog # ABO10202) at 0.5 µg/mL. The blot was developed using chemiluminescence (ECL) method .

**Anti-CPM Picoband Antibody - Background**

CPM, mapped to 12q15, is known as Carboxypeptidase M. The protein encoded by this gene is a

membrane-bound arginine/lysine carboxypeptidase. Its expression is associated with monocyte to macrophage differentiation. This encoded protein contains hydrophobic regions at the amino and carboxy termini and has 6 potential asparagine-linked glycosylation sites. The active site residues of carboxypeptidases A and B are conserved in this protein. Three alternatively spliced transcript variants encoding the same protein have been described for this gene.