

**Anti-Dishevelled 2 Picoband Antibody**  
**Catalog # ABO10247****Specification**

---

**Anti-Dishevelled 2 Picoband Antibody - Product Information**

Application	WB
Primary Accession	<a href="#">O14641</a>
Host	Rabbit
Reactivity	Human, Mouse, Rat
Clonality	Polyclonal
Format	Lyophilized

**Description**

Rabbit IgG polyclonal antibody for Segment polarity protein dishevelled homolog DVL-2(DVL2) detection. Tested with WB in Human;Mouse;Rat.

**Reconstitution**

Add 0.2ml of distilled water will yield a concentration of 500ug/ml.

**Anti-Dishevelled 2 Picoband Antibody - Additional Information**

**Gene ID** 1856

**Other Names**

Segment polarity protein dishevelled homolog DVL-2, Dishevelled-2, DSH homolog 2, DVL2

**Calculated MW**

78948 MW KDa

**Application Details**

Western blot, 0.1-0.5 µg/ml, Mouse, Rat, Human<br>

**Subcellular Localization**

Cell membrane ; Peripheral membrane protein ; Cytoplasmic side . Cytoplasm, cytosol . Cytoplasmic vesicle . Localizes at the cell membrane upon interaction with frizzled family members and promotes their internalization. Localizes to cytoplasmic puncta (By similarity). .

**Protein Name**

Segment polarity protein dishevelled homolog DVL-2

**Contents**

Each vial contains 5mg BSA, 0.9mg NaCl, 0.2mg Na<sub>2</sub>HPO<sub>4</sub>, 0.05mg Na<sub>3</sub>.

**Immunogen**

A synthetic peptide corresponding to a sequence at the N-terminus of human Dishevelled 2 (35-64aa AERITLGDFKSVLQRPAGAKYFFKSMQDF), identical to the related mouse sequence.

**Purification**

Immunogen affinity purified.

**Cross Reactivity**

No cross reactivity with other proteins.

**Storage**

**At -20°C for one year. After reconstitution, at 4°C for one month. It can also be aliquotted and stored frozen at -20°C for a longer time. Avoid repeated freezing and thawing.**

**Anti-Dishevelled 2 Picoband Antibody - Protein Information****Name** DVL2**Function**

Plays a role in the signal transduction pathways mediated by multiple Wnt genes (PubMed:<a href="http://www.uniprot.org/citations/24616100" target="\_blank">24616100</a>). Participates both in canonical and non-canonical Wnt signaling by binding to the cytoplasmic C- terminus of frizzled family members and transducing the Wnt signal to down-stream effectors. Promotes internalization and degradation of frizzled proteins upon Wnt signaling.

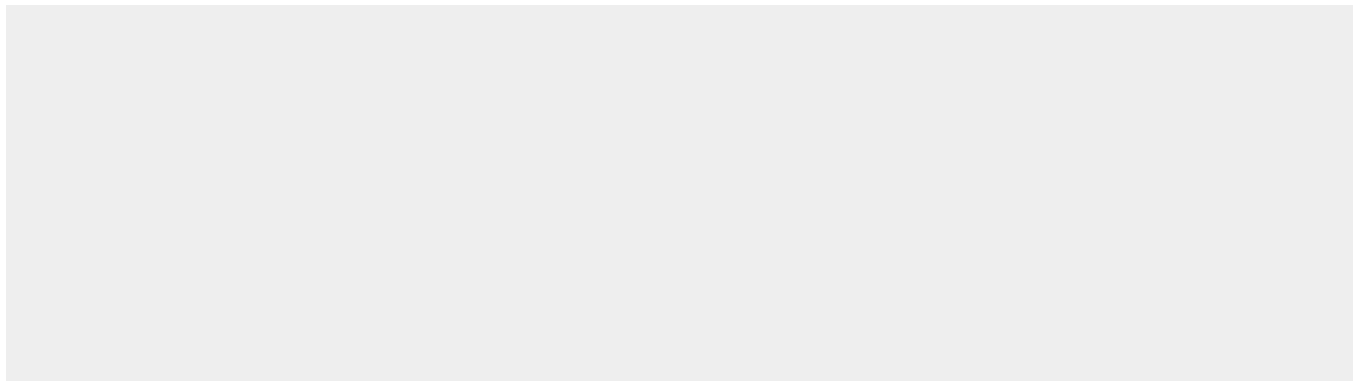
**Cellular Location**

Cell membrane {ECO:0000250|UniProtKB:Q60838}; Peripheral membrane protein {ECO:0000250|UniProtKB:Q60838}; Cytoplasmic side {ECO:0000250|UniProtKB:Q60838}. Cytoplasm, cytosol. Cytoplasmic vesicle {ECO:0000250|UniProtKB:Q60838}. Nucleus Note=Localizes at the cell membrane upon interaction with frizzled family members and promotes their internalization. Localizes to cytoplasmic puncta (By similarity). Interaction with FOXK1 and FOXK2 induces nuclear translocation (PubMed:25805136) {ECO:0000250|UniProtKB:Q60838, ECO:0000269|PubMed:24616100, ECO:0000269|PubMed:25805136}

**Anti-Dishevelled 2 Picoband Antibody - Protocols**

Provided below are standard protocols that you may find useful for product applications.

- [Western Blot](#)
- [Blocking Peptides](#)
- [Dot Blot](#)
- [Immunohistochemistry](#)
- [Immunofluorescence](#)
- [Immunoprecipitation](#)
- [Flow Cytometry](#)
- [Cell Culture](#)

**Anti-Dishevelled 2 Picoband Antibody - Images**

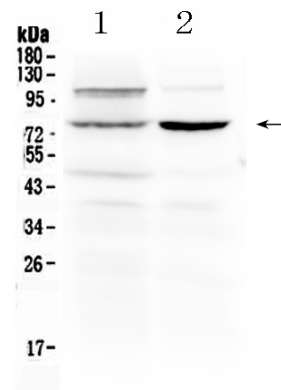


Figure 1. Western blot analysis of Dishevelled 2 using anti- Dishevelled 2 antibody (ABO10247). Electrophoresis was performed on a 5-20% SDS-PAGE gel at 70V (Stacking gel) / 90V (Resolving gel) for 2-3 hours. The sample well of each lane was loaded with 50ug of sample under reducing conditions. Lane 1: rat liver tissue lysates, Lane 2: mouse kidney tissue lysates. After Electrophoresis, proteins were transferred to a Nitrocellulose membrane at 150mA for 50-90 minutes. Blocked the membrane with 5% Non-fat Milk/ TBS for 1.5 hour at RT. The membrane was incubated with rabbit anti- Dishevelled 2 antigen affinity purified polyclonal antibody (Catalog # ABO10247) at 0.5  $\mu$ g/mL overnight at 4 $^{\circ}$ C, then washed with TBS-0.1%Tween 3 times with 5 minutes each and probed with a goat anti-rabbit IgG-HRP secondary antibody at a dilution of 1:10000 for 1.5 hour at RT. The signal is developed using an Enhanced Chemiluminescent detection (ECL) kit with Tanon 5200 system. A specific band was detected for Dishevelled 2 at approximately 79KD. The expected band size for Dishevelled 2 is at 79KD.

#### Anti-Dishevelled 2 Picoband Antibody - Background

Segment polarity protein dishevelled homolog DVL-2 is a protein that in humans is encoded by the DVL2 gene. This gene encodes a member of the dishevelled (dsh) protein family. The vertebrate dsh proteins have approximately 40% amino acid sequence similarity with *Drosophila* dsh. This gene encodes a 90-kD protein that undergoes posttranslational phosphorylation to form a 95-kD cytoplasmic protein, which may play a role in the signal transduction pathway mediated by multiple Wnt proteins. The mechanisms of dishevelled function in Wnt signaling are likely to be conserved among metazoans.