

**Anti-Anterior Gradient 2 Picoband Antibody**  
**Catalog # ABO10267****Specification**

---

**Anti-Anterior Gradient 2 Picoband Antibody - Product Information**

Application	WB, IHC-P
Primary Accession	<a href="#">O95994</a>
Host	Rabbit
Reactivity	Human, Mouse, Rat
Clonality	Polyclonal
Format	Lyophilized

**Description**

Rabbit IgG polyclonal antibody for Anterior gradient protein 2 homolog(AGR2) detection. Tested with WB, IHC-P in Human;Mouse;Rat.

**Reconstitution**

Add 0.2ml of distilled water will yield a concentration of 500ug/ml.

**Anti-Anterior Gradient 2 Picoband Antibody - Additional Information**

**Gene ID** 10551

**Other Names**

Anterior gradient protein 2 homolog, AG-2, hAG-2, HPC8, Secreted cement gland protein XAG-2 homolog, AGR2, AG2

**Calculated MW**

19979 MW KDa

**Application Details**

Immunohistochemistry(Paraffin-embedded Section), 0.5-1 µg/ml, Human, Mouse, Rat, By Heat  
Western blot, 0.1-0.5 µg/ml, Human, Mouse, Rat

**Subcellular Localization**

Secreted . Endoplasmic reticulum .

**Tissue Specificity**

Expressed strongly in trachea, lung, stomach, colon, prostate and small intestine. Expressed weakly in pituitary gland, salivary gland, mammary gland, bladder, appendix, ovary, fetal lung, uterus, pancreas, kidney, fetal kidney, testis, placenta, thyroid gland and in estrogen receptor (ER)-positive breast cancer cell lines. .

**Protein Name**

Anterior gradient protein 2 homolog

**Contents**

Each vial contains 5mg BSA, 0.9mg NaCl, 0.2mg Na<sub>2</sub>HPO<sub>4</sub>, 0.05mg NaN<sub>3</sub>.

**Immunogen**

E.coli-derived human Anterior Gradient 2 recombinant protein (Position: R21-L175). Human Anterior Gradient 2 shares 93.5% amino acid (aa) sequence identity with mouse Anterior Gradient 2.

**Purification**

Immunogen affinity purified.

**Cross Reactivity**

No cross reactivity with other proteins

**Storage**

**At -20°C for one year. After reconstitution, at 4°C for one month. It can also be aliquotted and stored frozen at -20°C for a longer time. Avoid repeated freezing and thawing.**

**Anti-Anterior Gradient 2 Picoband Antibody - Protein Information**

**Name** AGR2

**Synonyms** AG2

**Function**

Required for MUC2 post-transcriptional synthesis and secretion. May play a role in the production of mucus by intestinal cells (By similarity). Proto-oncogene that may play a role in cell migration, cell differentiation and cell growth. Promotes cell adhesion (PubMed:[23274113](http://www.uniprot.org/citations/23274113)).

**Cellular Location**

Secreted. Endoplasmic reticulum {ECO:0000250|UniProtKB:O88312}

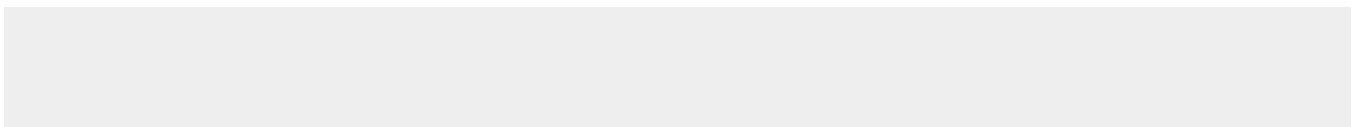
**Tissue Location**

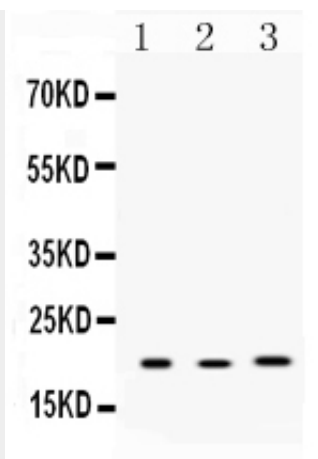
Expressed strongly in trachea, lung, stomach, colon, prostate and small intestine. Expressed weakly in pituitary gland, salivary gland, mammary gland, bladder, appendix, ovary, fetal lung, uterus, pancreas, kidney, fetal kidney, testis, placenta, thyroid gland and in estrogen receptor (ER)-positive breast cancer cell lines

**Anti-Anterior Gradient 2 Picoband Antibody - Protocols**

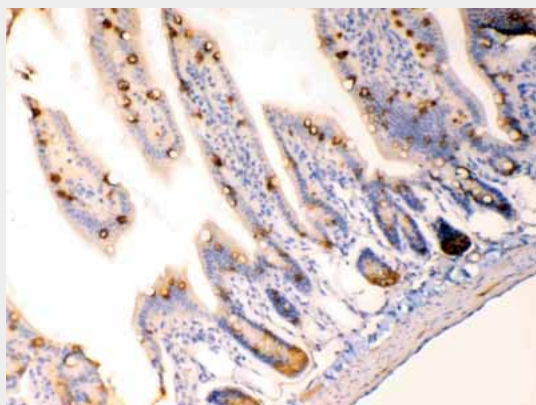
Provided below are standard protocols that you may find useful for product applications.

- [Western Blot](#)
- [Blocking Peptides](#)
- [Dot Blot](#)
- [Immunohistochemistry](#)
- [Immunofluorescence](#)
- [Immunoprecipitation](#)
- [Flow Cytometry](#)
- [Cell Culture](#)

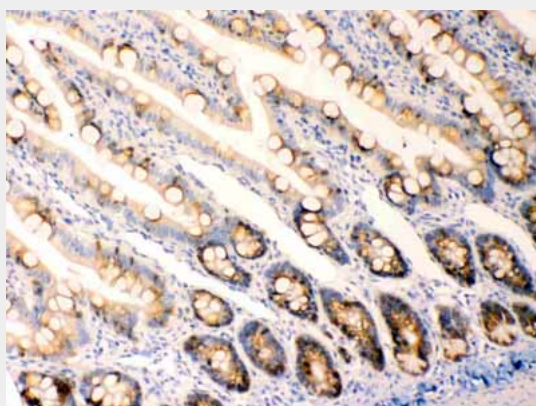
**Anti-Anterior Gradient 2 Picoband Antibody - Images**



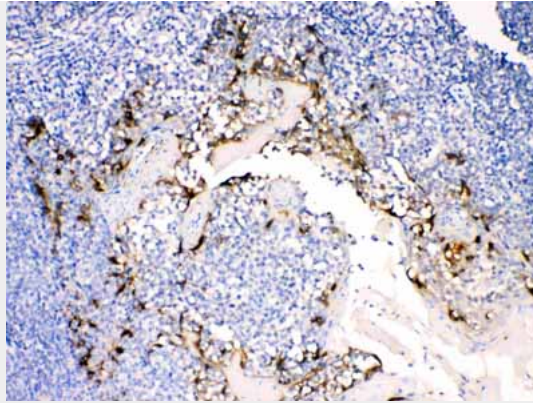
Western blot analysis of Anterior Gradient 2 expression in rat lung extract (lane 1), mouse liver extract (lane 2) and MCF-7 whole cell lysates (lane 3). Anterior Gradient 2 at 20KD was detected using rabbit anti- Anterior Gradient 2 Antigen Affinity purified polyclonal antibody (Catalog # ABO10267) at 0.5  $\mu$ g/mL. The blot was developed using chemiluminescence (ECL) method .



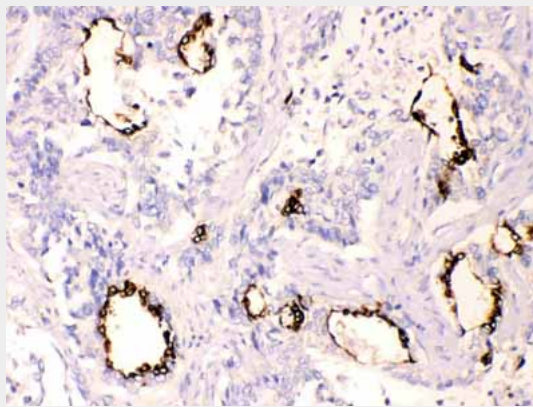
Anterior Gradient 2 was detected in paraffin-embedded sections of mouse intestine tissues using rabbit anti- Anterior Gradient 2 Antigen Affinity purified polyclonal antibody (Catalog # ABO10267) at 1  $\mu$ g/mL. The immunohistochemical section was developed using SABC method .



Anterior Gradient 2 was detected in paraffin-embedded sections of rat intestine tissues using rabbit anti- Anterior Gradient 2 Antigen Affinity purified polyclonal antibody (Catalog # ABO10267) at 1  $\mu$ g/mL. The immunohistochemical section was developed using SABC method .



Anterior Gradient 2 was detected in paraffin-embedded sections of human tonsil tissues using rabbit anti- Anterior Gradient 2 Antigen Affinity purified polyclonal antibody (Catalog # ABO10267) at 1  $\mu$ g/mL. The immunohistochemical section was developed using SABC method .



Anterior Gradient 2 was detected in paraffin-embedded sections of human lung cancer tissues using rabbit anti- Anterior Gradient 2 Antigen Affinity purified polyclonal antibody (Catalog # ABO10267) at 1  $\mu$ g/mL. The immunohistochemical section was developed using SABC method .

#### **Anti-Anterior Gradient 2 Picoband Antibody - Background**

Anterior gradient protein 2 homolog (AGR-2), also known as secreted cement gland protein XAG-2 homolog, is a protein that in humans is encoded by the AGR2 gene. Anterior gradient homolog 2 was originally discovered in *Xenopus laevis*. In *Xenopus* AGR2 plays a role in cement gland differentiation, but in human cancer cell lines high levels of AGR2 correlate with downregulation of the p53 response, cell migration, and cell transformation. However, there have been other observations that AGR2 can repress growth and proliferation.