

**Anti-CDR2 Picoband Antibody**  
**Catalog # ABO10272****Specification**

---

**Anti-CDR2 Picoband Antibody - Product Information**

Application	WB
Primary Accession	<a href="#">Q01850</a>
Host	Rabbit
Reactivity	Human, Mouse
Clonality	Polyclonal
Format	Lyophilized

**Description**

Rabbit IgG polyclonal antibody for Cerebellar degeneration-related protein 2(CDR2) detection. Tested with WB in Human;Mouse.

**Reconstitution**

Add 0.2ml of distilled water will yield a concentration of 500ug/ml.

**Anti-CDR2 Picoband Antibody - Additional Information**

**Gene ID** 1039

**Other Names**

Cerebellar degeneration-related protein 2, Major Yo paraneoplastic antigen, Paraneoplastic cerebellar degeneration-associated antigen, CDR2, PCD17

**Calculated MW**

51855 MW KDa

**Application Details**

Western blot, 0.1-0.5 µg/ml, Human, Mouse<br>

**Protein Name**

Cerebellar degeneration-related protein 2

**Contents**

Each vial contains 5mg BSA, 0.9mg NaCl, 0.2mg Na<sub>2</sub>HPO<sub>4</sub>, 0.05mg NaN<sub>3</sub>.

**Immunogen**

A synthetic peptide corresponding to a sequence in the middle region of human CDR2 (232-2656aa ELEQQLGATGAYRARALELEAEVAEMRQMLQSEH), different from the related mouse sequence by two amino acids.

**Purification**

Immunogen affinity purified.

**Cross Reactivity**

No cross reactivity with other proteins.

**Storage**

At -20°C for one year. After reconstitution, at 4°C for one month. It can also be aliquotted and stored frozen at -20°C for a longer time. Avoid repeated freezing and thawing.

**Anti-CDR2 Picoband Antibody - Protein Information**

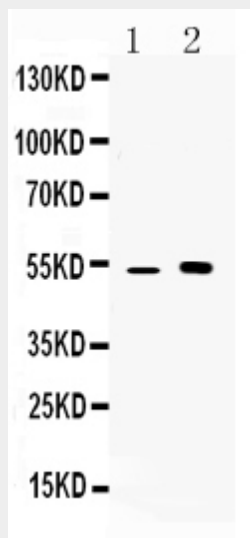
**Name** CDR2

**Synonyms** PCD17

**Anti-CDR2 Picoband Antibody - Protocols**

Provided below are standard protocols that you may find useful for product applications.

- [Western Blot](#)
- [Blocking Peptides](#)
- [Dot Blot](#)
- [Immunohistochemistry](#)
- [Immunofluorescence](#)
- [Immunoprecipitation](#)
- [Flow Cytometry](#)
- [Cell Culture](#)

**Anti-CDR2 Picoband Antibody - Images**

Western blot analysis of CDR2 expression in mouse kidney extract (lane 1) and MCF-7 whole cell lysates (lane 2). CDR2 at 52KD was detected using rabbit anti- CDR2 Antigen Affinity purified polyclonal antibody (Catalog # ABO10272) at 0.5 µg/mL. The blot was developed using chemiluminescence (ECL) method .

**Anti-CDR2 Picoband Antibody - Background**

Cerebellar degeneration-related protein 2 is a protein that in humans is encoded by the CDR2 gene. By a combination of study of rodent/human somatic cell hybrids and in situ hybridization, this

gene is assigned to 16p13.1-p12. The onconeural cerebellar degeneration-related antigen Cdr2 is associated with paraneoplastic syndromes. Neoplastic expression of Cdr2 in ovary and breast tumors triggers an autoimmune response that suppresses tumor growth by developing tumor immunity, but culminates in cerebellar degeneration when Cdr2-specific immune cells recognize neuronal Cdr2.