

**Anti-TMEM240 Picoband Antibody**  
**Catalog # ABO10351****Specification**

---

**Anti-TMEM240 Picoband Antibody - Product Information**

Application	WB
Primary Accession	<a href="#">Q5SV17</a>
Host	Rabbit
Reactivity	Human, Mouse, Rat
Clonality	Polyclonal
Format	Lyophilized

**Description**

Rabbit IgG polyclonal antibody for Transmembrane protein 240(TMEM240) detection. Tested with WB in Human;Mouse;Rat.

**Reconstitution**

Add 0.2ml of distilled water will yield a concentration of 500ug/ml.

**Anti-TMEM240 Picoband Antibody - Additional Information**

**Gene ID** 339453

**Other Names**

Transmembrane protein 240, TMEM240, C1orf70

**Calculated MW**

19908 MW KDa

**Application Details**

Western blot, 0.1-0.5 µg/ml, Human, Mouse, Rat<br>

**Subcellular Localization**

Cell junction, synapse . Cell membrane ; Multi-pass membrane protein .

**Protein Name**

Transmembrane protein 240

**Contents**

Each vial contains 5mg BSA, 0.9mg NaCl, 0.2mg Na<sub>2</sub>HPO<sub>4</sub>, 0.05mg NaN<sub>3</sub>.

**Immunogen**

E.coli-derived human TMEM240 recombinant protein (Position: M1-L173). Human TMEM240 shares 97.7% amino acid (aa) sequence identity with mouse TMEM240.

**Purification**

Immunogen affinity purified.

**Cross Reactivity**

No cross reactivity with other proteins.

## Storage

At -20°C for one year. After reconstitution, at 4°C for one month. It can also be aliquotted and stored frozen at -20°C for a longer time. Avoid repeated freezing and thawing.

## Anti-TMEM240 Picoband Antibody - Protein Information

**Name** TMEM240

**Synonyms** C1orf70

### Cellular Location

Synapse {ECO:0000250|UniProtKB:B2RWJ3}. Cell membrane; Multi-pass membrane protein

## Anti-TMEM240 Picoband Antibody - Protocols

Provided below are standard protocols that you may find useful for product applications.

- [Western Blot](#)
- [Blocking Peptides](#)
- [Dot Blot](#)
- [Immunohistochemistry](#)
- [Immunofluorescence](#)
- [Immunoprecipitation](#)
- [Flow Cytometry](#)
- [Cell Culture](#)

## Anti-TMEM240 Picoband Antibody - Images

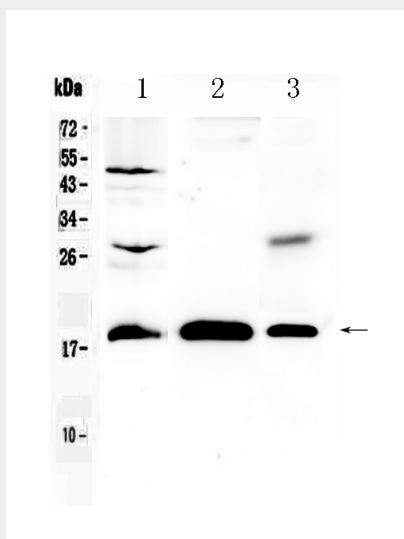


Figure 1. Western blot analysis of TMEM240 using anti- TMEM240 antibody (ABO10351). Electrophoresis was performed on a 5-20% SDS-PAGE gel at 70V (Stacking gel) / 90V (Resolving gel) for 2-3 hours. The sample well of each lane was loaded with 50ug of sample under reducing conditions. Lane 1: rat brain tissue lysates, Lane 2: NIH3T3 whole Cell lysates, Lane 3: COLO320 whole cell lysates. After Electrophoresis, proteins were transferred to a Nitrocellulose membrane at 150mA for 50-90 minutes. Blocked the membrane with 5% Non-fat Milk/ TBS for 1.5 hour at RT.

The membrane was incubated with rabbit anti- TMEM240 antigen affinity purified polyclonal antibody (Catalog # ABO10351) at 0.5 µg/mL overnight at 4°C, then washed with TBS-0.1%Tween 3 times with 5 minutes each and probed with a goat anti-rabbit IgG-HRP secondary antibody at a dilution of 1:10000 for 1.5 hour at RT. The signal is developed using an Enhanced Chemiluminescent detection (ECL) kit with Tanon 5200 system. A specific band was detected for TMEM240 at approximately 19KD. The expected band size for TMEM240 is at 19KD.

**Anti-TMEM240 Picoband Antibody - Background**

TMEM240 is a small, highly conserved transmembrane protein expressed in brain. The TMEM240 gene maps to chromosome 1p36.33. This gene encodes a transmembrane-domain containing protein found in the brain and cerebellum. Mutations in this gene result in spinocerebellar ataxia 21.