

**Anti-CTAG1A Picoband Antibody**  
**Catalog # ABO10352****Specification**

---

**Anti-CTAG1A Picoband Antibody - Product Information**

Application	WB
Primary Accession	<a href="#">P78358</a>
Host	Rabbit
Reactivity	Human
Clonality	Polyclonal
Format	Lyophilized

**Description**

Rabbit IgG polyclonal antibody for Cancer/testis antigen 1(CTAG1A) detection. Tested with WB in Human.

**Reconstitution**

Add 0.2ml of distilled water will yield a concentration of 500ug/ml.

**Anti-CTAG1A Picoband Antibody - Additional Information**

**Gene ID** 1485;246100

**Other Names**

Cancer/testis antigen 1, Autoimmunogenic cancer/testis antigen NY-ESO-1, Cancer/testis antigen 6.1, CT6.1, L antigen family member 2, LAGE-2, CTAG1A, CTAG, CTAG1, ESO1, LAGE2, LAGE2A

**Calculated MW**

17992 MW KDa

**Application Details**

Western blot, 0.1-0.5 µg/ml, Human<br>

**Subcellular Localization**

Cytoplasm .

**Tissue Specificity**

Expressed in testis and ovary and in a wide variety of cancers. Detected in uterine myometrium. Expressed from 18 weeks until birth in human fetal testis. In the adult testis, is strongly expressed in spermatogonia and in primary spermatocytes, but not in post-meiotic cells or in testicular somatic cells (at protein level). .

**Protein Name**

Cancer/testis antigen 1

**Contents**

Each vial contains 5mg BSA, 0.9mg NaCl, 0.2mg Na2HPO4, 0.05mg NaN3.

**Immunogen**

A synthetic peptide corresponding to a sequence at the C-terminus of human CTAG1A (131-164aa

NILTIRLTAADHRQLQLSISSCLQQLSLLMWITQ).

**Purification**

Immunogen affinity purified.

**Cross Reactivity**

No cross reactivity with other proteins.

**Storage**

**At -20°C for one year. After reconstitution, at 4°C for one month. It can also be aliquotted and stored frozen at -20°C for a longer time. Avoid repeated freezing and thawing.**

**Anti-CTAG1A Picoband Antibody - Protein Information**

**Name** CTAG1A

**Synonyms** CTAG, CTAG1, ESO1, LAGE2, LAGE2A

**Cellular Location**

Cytoplasm.

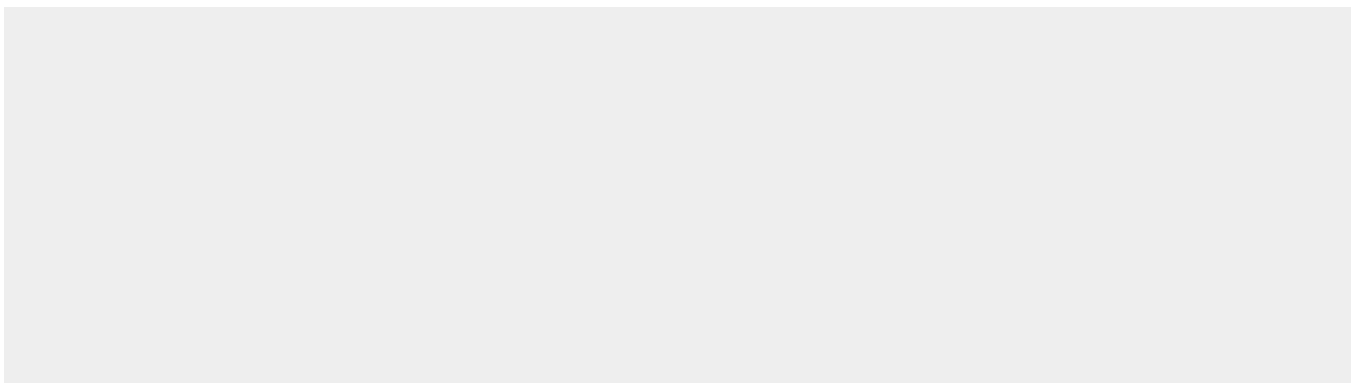
**Tissue Location**

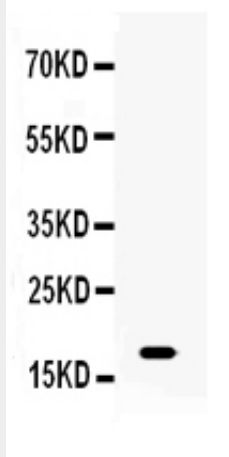
Expressed in testis and ovary and in a wide variety of cancers. Detected in uterine myometrium. Expressed from 18 weeks until birth in human fetal testis. In the adult testis, is strongly expressed in spermatogonia and in primary spermatocytes, but not in post-meiotic cells or in testicular somatic cells (at protein level)

**Anti-CTAG1A Picoband Antibody - Protocols**

Provided below are standard protocols that you may find useful for product applications.

- [Western Blot](#)
- [Blocking Peptides](#)
- [Dot Blot](#)
- [Immunohistochemistry](#)
- [Immunofluorescence](#)
- [Immunoprecipitation](#)
- [Flow Cytometry](#)
- [Cell Culture](#)

**Anti-CTAG1A Picoband Antibody - Images**



Western blot analysis of CTAG1A expression in HELA whole cell lysates (lane 1). CTAG1A at 18KD was detected using rabbit anti- CTAG1A Antigen Affinity purified polyclonal antibody (Catalog #ABO10352) at 0.5  $\mu$ g/mL. The blot was developed using chemiluminescence (ECL) method .

#### **Anti-CTAG1A Picoband Antibody - Background**

CTAG1A, which they called LAGE2A, is an identical copy of the CTAG1B gene. This gene is mapped to chromosome Xq28. It lies in the opposite orientation and centromeric to the CTAG1B gene. The protein encoded by this gene is a tumor cell antigen found in various types of cancers, which makes it a good candidate for a cancer vaccine. This gene is also highly expressed in normal ovary and testis tissues.