

**Anti-Actin Antibody (Monoclonal, AC-40)**  
**Catalog # ABO10397****Specification****Anti-Actin Antibody (Monoclonal, AC-40) - Product Information**

Application	WB, IHC-F
Primary Accession	<a href="#">P68133</a>
Host	Mouse
Isotype	Mouse IgG2a
Reactivity	Human, Mouse, Rat
Clonality	Monoclonal
Format	Lyophilized

**Description**

Mouse IgG monoclonal antibody for Actin detection. Tested with WB, IHC-F in Human;mouse;rat;chicken. No cross reactivity with other proteins.

**Reconstitution**

Add 1ml of PBS buffer will yield a concentration of 100ug/ml.

**Anti-Actin Antibody (Monoclonal, AC-40) - Additional Information**

**Gene ID** 58

**Other Names**

Actin, alpha skeletal muscle, Alpha-actin-1, ACTA1, ACTA

**Calculated MW**

42051 MW KDa

**Application Details**

Immunohistochemistry(Frozen Section), 4 µg/ml, Human, chicken, mouse, rat, -<br>Western blot, 2 µg/ml, Human, chicken, mouse, rat<br>

**Subcellular Localization**

Cytoplasm, cytoskeleton.

**Protein Name**

Actin, alpha skeletal muscle|Actin, alpha cardiac muscle 1|Actin, aortic smooth muscle|Actin, cytoplasmic 1|Actin, cytoplasmic 2|Actin, gamma-enteric smooth muscle

**Contents**

Mouse ascites fluid, 1.2% sodium acetate, 2mg BSA, with 0.01mg NaN3 as preservative.

**Immunogen**

Synthetic actin C-terminal peptideSer-Gly-Pro-Ser-Ile-Val-His-Arg-Lys-Cys-Phe,attached to a Multiple Antigen Peptide(MAP) backbone.

**Purification**

Ascites

**Cross Reactivity**

No cross reactivity with other proteins

**Storage**

At -20°C for one year. After reconstitution, at 4°C for one month. It can also be aliquotted and stored frozen at -20°C for a longer time. Avoid repeated freezing and thawing.

**Anti-Actin Antibody (Monoclonal, AC-40) - Protein Information**

**Name** ACTA1

**Synonyms** ACTA

**Function**

Actins are highly conserved proteins that are involved in various types of cell motility and are ubiquitously expressed in all eukaryotic cells.

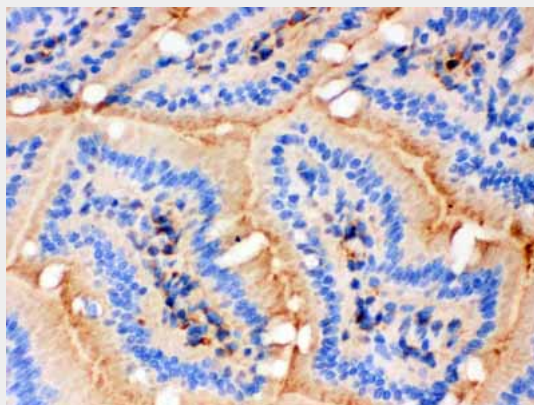
**Cellular Location**

Cytoplasm, cytoskeleton.

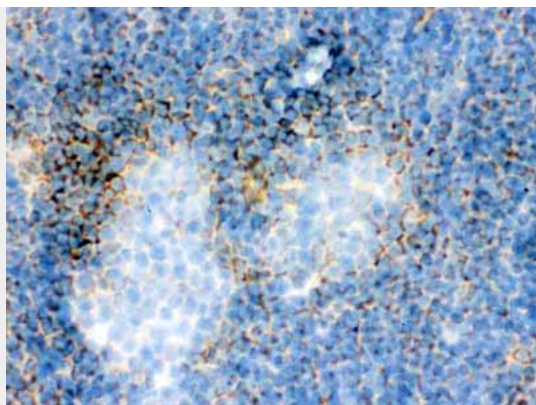
**Anti-Actin Antibody (Monoclonal, AC-40) - Protocols**

Provided below are standard protocols that you may find useful for product applications.

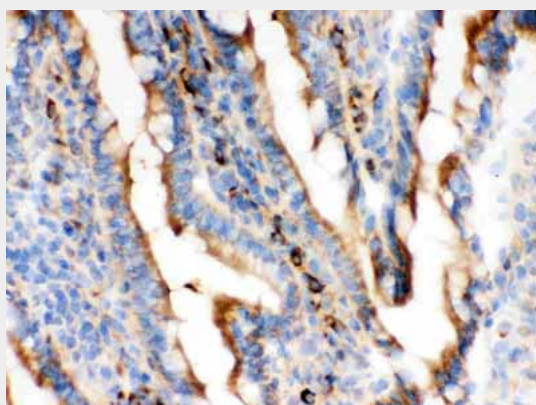
- [Western Blot](#)
- [Blocking Peptides](#)
- [Dot Blot](#)
- [Immunohistochemistry](#)
- [Immunofluorescence](#)
- [Immunoprecipitation](#)
- [Flow Cytometry](#)
- [Cell Culture](#)

**Anti-Actin Antibody (Monoclonal, AC-40) - Images**

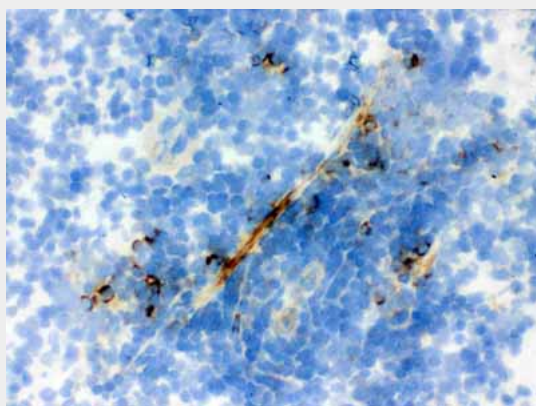
Anti- Actin antibody, ABO10397, IHC(F)IHC(F): Mouse Intestine Tissue



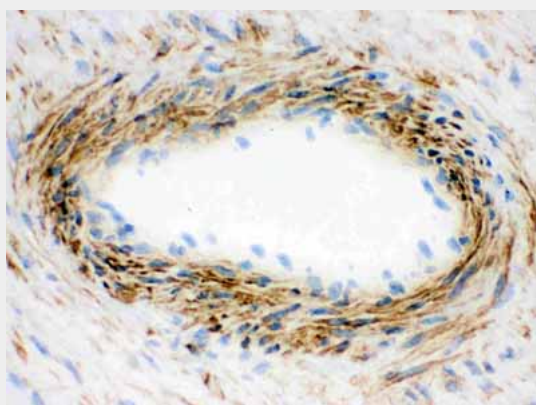
Anti- Actin antibody, ABO10397, IHC(F)IHC(F): Mouse Spleen Tissue



Anti- Actin antibody, ABO10397, IHC(F)IHC(F): Rat Intestine Tissue



Anti- Actin antibody, ABO10397, IHC(F)IHC(F): Rat Spleen Tissue



Anti- Actin antibody, ABO10397, IHC(F)IHC(F): Human Placenta Tissue

#### **Anti-Actin Antibody (Monoclonal, AC-40) - Background**

Actin, a highly conserved protein, is a major component of both the cytoskeletal and contractile structures in the cell types. It varies in amount, being related to the type of differentiation and to the functional state of cells and tissues. The actins exhibit over 90% sequence homology, but each isoform has a unique NH2-terminal sequence. The isoforms are comprised of three alpha-actin, one beta-actin, two gamma-actin. Because the amino acid sequence of the C-terminal is the same for almost all actins, this antibody has been raised using a synthetic peptide corresponding to the C-terminal 11 residues.