

**Anti-Cytokeratin Peptide 18 Antibody (Monoclonal, CY-90)**  
**Catalog # ABO10420****Specification****Anti-Cytokeratin Peptide 18 Antibody (Monoclonal, CY-90) - Product Information**

Application	WB, IHC-P, IHC-F
Primary Accession	<a href="#">Q5BJY9</a>
Host	Mouse
Isotype	Mouse IgG1
Reactivity	Human, Rat
Clonality	Monoclonal
Format	Lyophilized

**Description**

Mouse IgG monoclonal antibody for Cytokeratin Peptide 18, keratin 18 (KRT18) detection. Tested with WB, IHC-P, IHC-F in Human; rat. No cross reactivity with other proteins.

**Reconstitution**

Add 1ml of PBS buffer will yield a concentration of 100ug/ml.

**Anti-Cytokeratin Peptide 18 Antibody (Monoclonal, CY-90) - Additional Information**

**Gene ID** 294853

**Other Names**

Keratin, type I cytoskeletal 18, Cytokeratin-18, CK-18, Keratin-18, K18, Krt18  
{ECO:0000250|UniProtKB:P05783}

**Calculated MW**

47761 MW KDa

**Application Details**

Immunohistochemistry(Paraffin-embedded Section), 1-2 µg/ml, Human, rat, By Heat<br><br>Immunohistochemistry(Frozen Section), 0.5-2 µg/ml, Human, rat, -<br>Western blot, 0.5-1 µg/ml, Human, rat<br>

**Subcellular Localization**

Nucleus matrix . Nucleus, nucleolus . Cytoplasm .

**Tissue Specificity**

Expressed on the plasma membrane of hepatocytes and in the narrow apical portions of supporting cells in the vomeronasal sensory epithelium. Detected in the type III alveolar cells of the lung, in the proliferative crypt epithelium of the small intestine and in the older intragemmal cells of the tongue. .

**Protein Name**

Keratin, type I cytoskeletal 18

**Contents**

Mouse ascites fluid, 1.2% sodium acetate, 2mg BSA, with 0.01mg NaN3 as preservative.

**Immunogen**

The human epidermal carcinoma A-431 and MCF-7 human breast cancer cell lines.

**Purification**

Ascites

**Cross Reactivity**

No cross reactivity with other proteins

**Storage**

**At -20°C for one year. After reconstitution, at 4°C for one month. It can also be aliquotted and stored frozen at -20°C for a longer time. Avoid repeated freezing and thawing.**

**Sequence Similarities**

Belongs to the intermediate filament family.

**Anti-Cytokeratin Peptide 18 Antibody (Monoclonal, CY-90) - Protein Information**

**Name** Krt18 {ECO:0000250|UniProtKB:P05783}

**Function**

When phosphorylated, plays a role in filament reorganization. Involved in the delivery of mutated CFTR to the plasma membrane. Together with KRT8, is involved in interleukin-6 (IL-6)-mediated barrier protection (By similarity). Involved in the uptake of thrombin- antithrombin complexes by hepatic cells.

**Cellular Location**

Nucleus matrix. Cytoplasm, perinuclear region {ECO:0000250|UniProtKB:P05783}. Nucleus, nucleolus {ECO:0000250|UniProtKB:P05783}. Cytoplasm

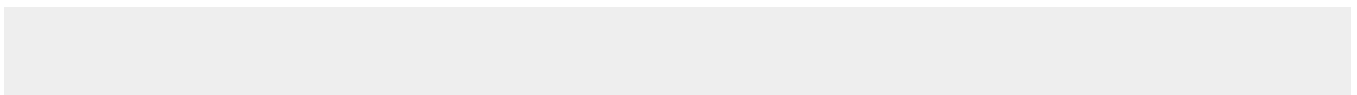
**Tissue Location**

Expressed on the plasma membrane of hepatocytes and in the narrow apical portions of supporting cells in the vomeronasal sensory epithelium. Detected in the type III alveolar cells of the lung, in the proliferative crypt epithelium of the small intestine and in the older intragemmal cells of the tongue

**Anti-Cytokeratin Peptide 18 Antibody (Monoclonal, CY-90) - Protocols**

Provided below are standard protocols that you may find useful for product applications.

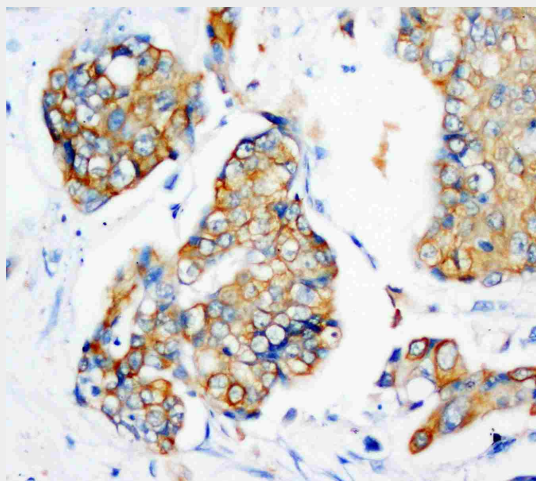
- [Western Blot](#)
- [Blocking Peptides](#)
- [Dot Blot](#)
- [Immunohistochemistry](#)
- [Immunofluorescence](#)
- [Immunoprecipitation](#)
- [Flow Cytometry](#)
- [Cell Culture](#)

**Anti-Cytokeratin Peptide 18 Antibody (Monoclonal, CY-90) - Images**

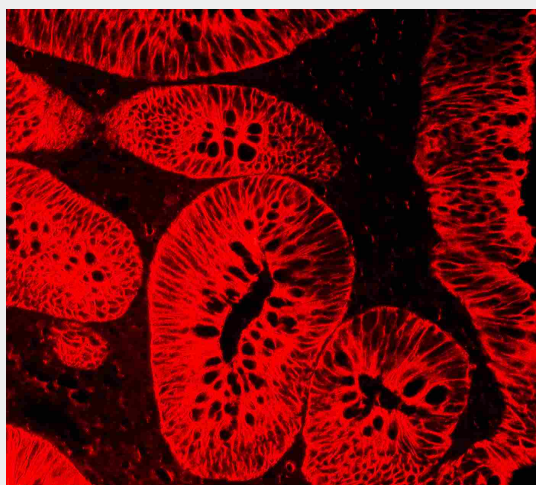
76KD —  
45KD —  
33KD —  
26KD —



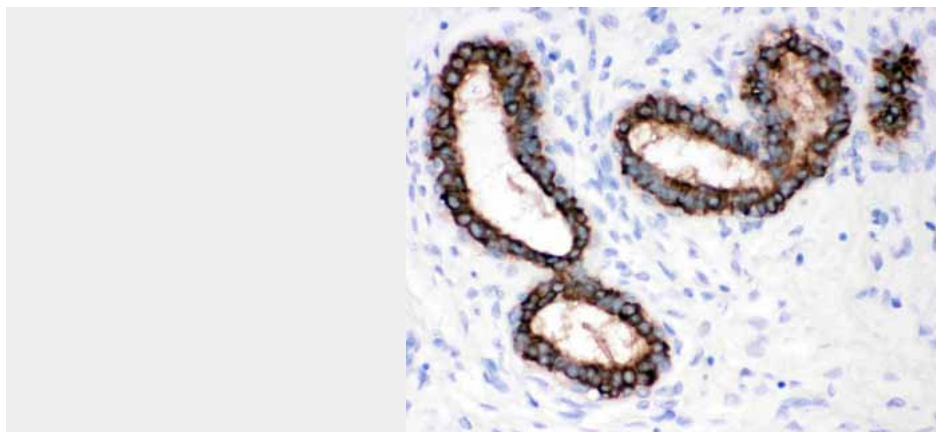
Anti-Cytokeratin Peptide 18 antibody (monoclonal), ABO10420, Western blottingWB: MCF-7 Cell Lysate



Anti-Cytokeratin Peptide 18 antibody (monoclonal), ABO10420, IHC(P)IHC(P): Human Mammary Cancer Tissue



Anti-Cytokeratin Peptide 18 antibody (monoclonal), ABO10420, IHC(P)IHC(P): Human Rectal Cancer Tissue



Anti-Cytokeratin Peptide 18 antibody (monoclonal), ABO10420, IHC(P)IHC(P): Human Mammary Cancer Tissue

#### **Anti-Cytokeratin Peptide 18 Antibody (Monoclonal, CY-90) - Background**

Intermediate filaments (IFs) are a structurally related family of cellular proteins that appear to be intimately involved with the cytoskeleton. Human keratin 18 (KRT18) and the homologous mouse Endo B are type I IF protein subunits whose expression is restricted in adults to a variety of simple epithelial tissues. The KRT18 gene is 3,791 bp long and the keratin 18 protein is coded for by 7 exons. The K18 gene is 3791 bp in length and the K18 protein is coded for by seven exons. By Southern blotting using the genomic DNA PCR product, the gene for keratin 18 is assigned to chromosome 12. Mutation of human keratin 18 in association with cryptogenic cirrhosis.