

Anti-Insulin Antibody (Monoclonal, K36AC10)
Catalog # ABO10441**Specification**

Anti-Insulin Antibody (Monoclonal, K36AC10) - Product Information

Application	IHC
Primary Accession	P01323
Host	Mouse
Isotype	Mouse IgG1
Reactivity	Human, Rat
Clonality	Monoclonal
Format	Lyophilized

Description

Mouse IgG monoclonal antibody for Insulin, insulin (INS) detection. Tested with IHC-P in Human;rabbit;rat. No cross reactivity with other proteins.

Reconstitution

Add 1ml of PBS buffer will yield a concentration of 100ug/ml.

Anti-Insulin Antibody (Monoclonal, K36AC10) - Additional Information

Gene ID 24506

Other Names

Insulin-2, Insulin-2 B chain, Insulin-2 A chain, Ins2, Ins-2

Calculated MW

12339 MW KDa

Application Details

Immunohistochemistry(Paraffin-embedded Section), 0.4-1 µg/ml, Human, rabbit, rat, By Heat

Subcellular Localization

Secreted.

Protein Name

Insulin

Contents

Mouse ascites fluid, 1.2% sodium acetate, 2mg BSA, with 0.01mg NaN₃ as preservative.

Immunogen

Human insulin.

Purification

Ascites

Cross Reactivity

No cross reactivity with other proteins

Storage

At -20°C for one year. After reconstitution, at 4°C for one month. It can also be aliquotted and stored frozen at -20°C for a longer time. Avoid repeated freezing and thawing.

Sequence Similarities

Belongs to the insulin family.

Anti-Insulin Antibody (Monoclonal, K36AC10) - Protein Information

Name Ins2

Synonyms Ins-2

Function

Insulin decreases blood glucose concentration. It increases cell permeability to monosaccharides, amino acids and fatty acids. It accelerates glycolysis, the pentose phosphate cycle, and glycogen synthesis in liver.

Cellular Location

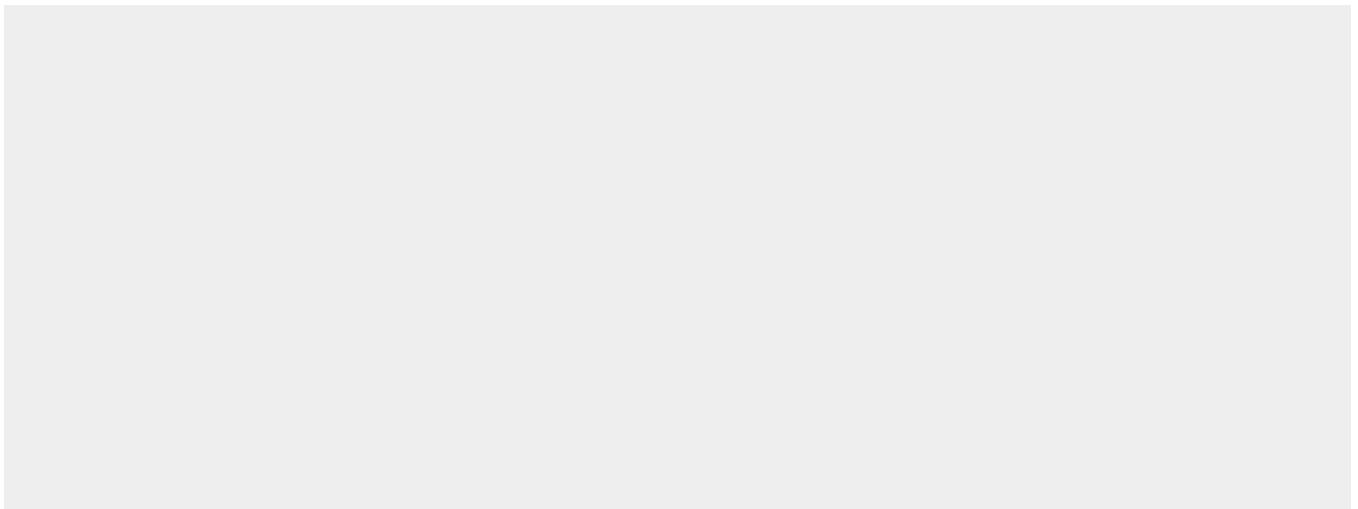
Secreted.

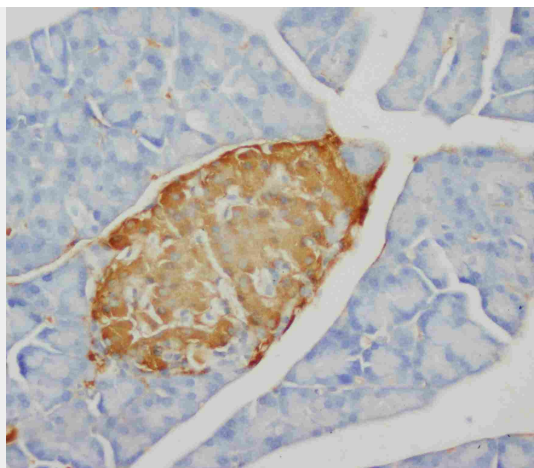
Anti-Insulin Antibody (Monoclonal, K36AC10) - Protocols

Provided below are standard protocols that you may find useful for product applications.

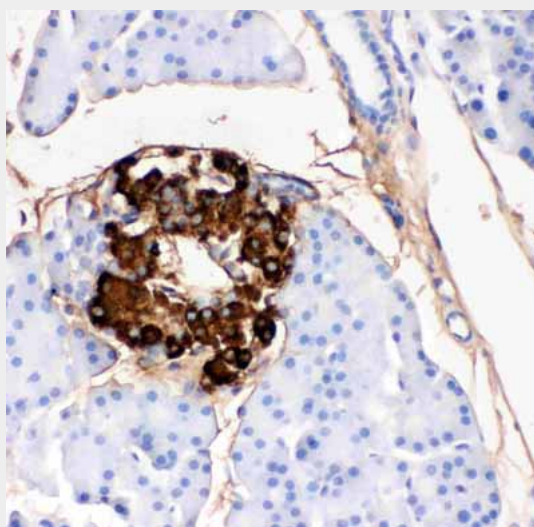
- [Western Blot](#)
- [Blocking Peptides](#)
- [Dot Blot](#)
- [Immunohistochemistry](#)
- [Immunofluorescence](#)
- [Immunoprecipitation](#)
- [Flow Cytometry](#)
- [Cell Culture](#)

Anti-Insulin Antibody (Monoclonal, K36AC10) - Images





Anti-Insulin antibody (monoclonal), ABO10441, IHC(P)IHC(P): Rat Pancreas Tissue



Anti-Insulin antibody (monoclonal), ABO10441, IHC(P)IHC(P): Rat Pancreas Tissue

Anti-Insulin Antibody (Monoclonal, K36AC10) - Background

Insulin, synthesized by the beta cells of the islets of Langerhans, consists of 2 dissimilar polypeptide chains, A and B, which are linked by 2 disulfide bonds. The insulin gene contains 3 exons and 2 introns; exon 2 encodes the signal peptide, the B chain, and part of the C peptide, while exon 3 encodes the remainder of the C peptide and the A chain. Localization of the human insulin gene to the distal end of the short arm of chromosome 11. Harper et al.(1981) and Harper and Saunders(1981) assigned the insulin gene to 11p15.5 by in situ hybridization.