

**Anti-MAP1 Antibody (Monoclonal, HM-1)**  
**Catalog # ABO10445****Specification**

---

**Anti-MAP1 Antibody (Monoclonal, HM-1) - Product Information**

Application	WB, IHC-P, IHC-F
Primary Accession	<a href="#">P34926</a>
Host	Mouse
Isotype	Mouse IgG1
Reactivity	Mouse, Rat
Clonality	Monoclonal
Format	Lyophilized

**Description**

Mouse IgG monoclonal antibody for MAP1, microtubule-associated protein 1A (MAP1A) detection. Tested with WB, IHC-P, IHC-F in Mouse;rat. No cross reactivity with other proteins.

**Reconstitution**

Add 1ml of PBS buffer will yield a concentration of 100ug/ml.

**Anti-MAP1 Antibody (Monoclonal, HM-1) - Additional Information**

**Gene ID** 25152

**Other Names**

Microtubule-associated protein 1A, MAP-1A, MAP1A heavy chain, MAP1 light chain LC2, Map1a, Mtap1a

**Calculated MW**

299531 MW KDa

**Application Details**

Immunohistochemistry(Paraffin-embedded Section), 1-2 µg/ml, Mouse, rat, By Heat<br><br>Immunohistochemistry(Frozen Section), 1-2 µg/ml, Mouse, rat, -<br>Western blot, 0.5-2 µg/ml, Mouse, rat<br>

**Subcellular Localization**

Cytoplasm, cytoskeleton .

**Tissue Specificity**

Brain, heart and muscle.

**Protein Name**

Microtubule-associated protein 1A

**Contents**

Mouse ascites fluid, 1.2% sodium acetate, 2mg BSA, with 0.01mg NaN3 as preservative.

**Immunogen**

Rat brain microtubule-associated proteins(MAPs).

**Purification**

Ascites

**Cross Reactivity**

No cross reactivity with other proteins

**Storage**

At -20°C for one year. After reconstitution, at 4°C for one month. It can also be aliquotted and stored frozen at -20°C for a longer time. Avoid repeated freezing and thawing.

**Anti-MAP1 Antibody (Monoclonal, HM-1) - Protein Information**

**Name** Map1a

**Synonyms** Mtap1a

**Function**

Structural protein involved in the filamentous cross-bridging between microtubules and other skeletal elements.

**Cellular Location**

Cytoplasm, cytoskeleton.

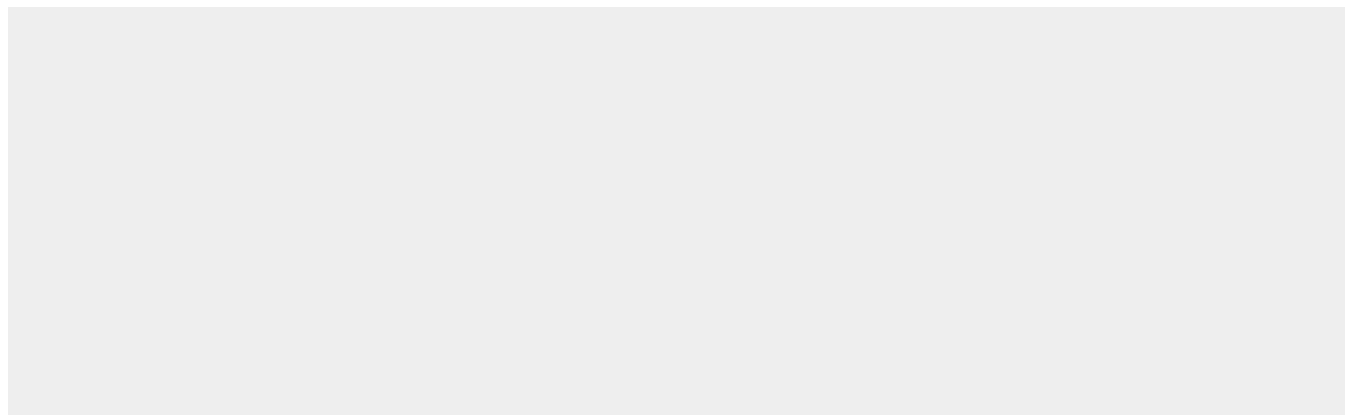
**Tissue Location**

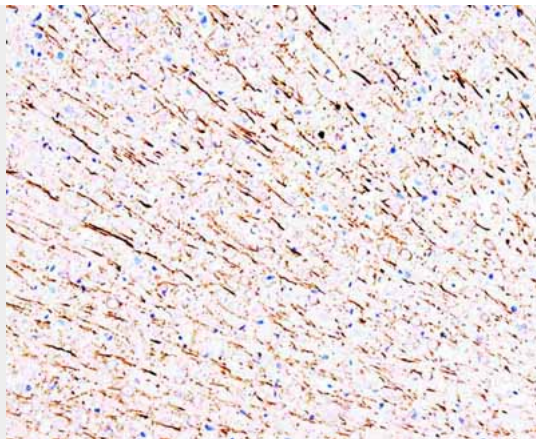
Brain, heart and muscle.

**Anti-MAP1 Antibody (Monoclonal, HM-1) - Protocols**

Provided below are standard protocols that you may find useful for product applications.

- [Western Blot](#)
- [Blocking Peptides](#)
- [Dot Blot](#)
- [Immunohistochemistry](#)
- [Immunofluorescence](#)
- [Immunoprecipitation](#)
- [Flow Cytometry](#)
- [Cell Culture](#)

**Anti-MAP1 Antibody (Monoclonal, HM-1) - Images**



Anti-MAP1 antibody (monoclonal), ABO10445, IHC(P)IHC(P): Rat Brain Tissue

#### **Anti-MAP1 Antibody (Monoclonal, HM-1) - Background**

Microtubules are the ubiquitous cytoskeletal structural components that are involved in intracellular transport. They are composed of tubulin and microtubule-associated proteins (MAPs). MAP1 is one of the major neuronal MAPs as well as being the largest (350KD). MAPs include MAP1A, MAP1B, and MAP2. MAP1a is a single-copy gene spanning 10.5 kb. MAP1a coding sequence is contained in five exons. MAP1B is encoded as a polypeptide that is processed to form a complex N-terminal microtubule-binding domain.