

**Anti-Myosin(Skeletal, Fast) Antibody (Monoclonal, MY-32)**  
**Catalog # ABO10451****Specification****Anti-Myosin(Skeletal, Fast) Antibody (Monoclonal, MY-32) - Product Information**

Application	WB
Primary Accession	<a href="#">I6L963</a>
Host	Mouse
Isotype	Mouse IgG1
Reactivity	Human, Mouse, Rat
Clonality	Monoclonal
Format	Lyophilized

**Description**

Mouse IgG monoclonal antibody for Myosin (Skeletal, Fast), myosin, heavy chain 1, skeletal muscle, adult; myosin, heavy chain 2, skeletal muscle, adult (MYH1; MYH2) detection. Tested with WB, IHC-P in Human;mouse;rat;rabbit. No cross reactivity with other proteins.

**Reconstitution**

Add 1ml of PBS buffer will yield a concentration of 100ug/ml.

**Anti-Myosin(Skeletal, Fast) Antibody (Monoclonal, MY-32) - Additional Information****Calculated MW**

183084 MW KDa

**Application Details**

Immunohistochemistry(Paraffin-embedded Section), 1.5-2 µg/ml, Human, mouse, rabbit, rat, By Heat  
Western blot, 1-2 µg/ml, Human, mouse, rabbit, rat

**Subcellular Localization**

MYH1: Cytoplasm, myofibril. Note: Thick filamentsof the myofibrils.|Myh1: Cytoplasm, myofibril. Note: Thick filamentsof the myofibrils.|MYH2: Cytoplasm, myofibril. Note: Thick filamentsof the myofibrils.

**Protein Name**

Myosin-1; Myosin-2

**Contents**

Mouse ascites fluid, 1.2% sodium acetate, 2mg BSA, with 0.01mg NaN3 as preservative.

**Immunogen**

Rabbit muscle myosin.

**Purification**

Ascites

**Cross Reactivity**

No cross reactivity with other proteins

**Storage**

At -20°C for one year. After reconstitution, at 4°C for one month. It can also be aliquotted and stored frozen at -20°C for a longer time. Avoid repeated freezing and thawing.

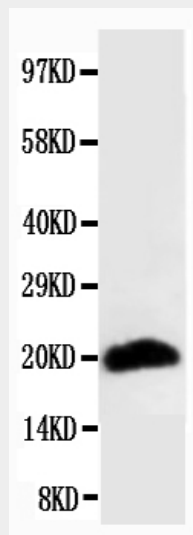
**Sequence Similarities**

Belongs to the TRAFAC class myosin-kinesin ATPase superfamily. Myosin family.

**Anti-Myosin(Skeletal, Fast) Antibody (Monoclonal, MY-32) - Protein Information****Anti-Myosin(Skeletal, Fast) Antibody (Monoclonal, MY-32) - Protocols**

Provided below are standard protocols that you may find useful for product applications.

- [Western Blot](#)
- [Blocking Peptides](#)
- [Dot Blot](#)
- [Immunohistochemistry](#)
- [Immunofluorescence](#)
- [Immunoprecipitation](#)
- [Flow Cytometry](#)
- [Cell Culture](#)

**Anti-Myosin(Skeletal, Fast) Antibody (Monoclonal, MY-32) - Images**

Anti-Myosin(Skeletal, Fast) antibody (monoclonal), ABO10451, Western blottingWB: Rat Skeletal Muscle Tissue Lysate

**Anti-Myosin(Skeletal, Fast) Antibody (Monoclonal, MY-32) - Background**

Myosin is composed of 2 heavy chains of about 200,000 daltons each and 4 light chains of about 20,000 daltons each. The light chains are of 2 distinct types: the phosphorylatable, regulatory, or MLC2 type, and the nonphosphorylatable, alkali, or MLC1 and MLC3 types(MYL1 according to the HGM symbols). Skeletal Myosin(Fast),, also known as MYL1, mapped to the region 2q32.1-qter.