

**Anti-CD56/NCAM-1 Antibody**  
**Catalog # ABO10454****Specification**

---

**Anti-CD56/NCAM-1 Antibody - Product Information**

Application	ICC
Primary Accession	<a href="#">P13596</a>
Host	Mouse
Isotype	Mouse IgG1
Reactivity	Human, Mouse, Rat
Clonality	Monoclonal
Format	Lyophilized

**Description**

Mouse IgG monoclonal antibody for NCAM, neural cell adhesion molecule 1 (NCAM1) detection. Tested with WB, ICC in Human;mouse;rat. No cross reactivity with other proteins.

**Reconstitution**

Add 1ml of PBS buffer will yield a concentration of 100ug/ml.

**Anti-CD56/NCAM-1 Antibody - Additional Information**

**Gene ID** 24586

**Other Names**

Neural cell adhesion molecule 1, N-CAM-1, NCAM-1, CD56, Ncam1, Ncam

**Calculated MW**

94658 MW KDa

**Application Details**

Immunocytochemistry , 1 µg/ml, Human, mouse, rat, -<br>Western blot, 4 µg/ml, Human, mouse, rat<br>

**Subcellular Localization**

Cell membrane; Single-pass type I membrane protein.

**Protein Name**

Neural cell adhesion molecule 1

**Contents**

Mouse ascites fluid, 1.2% sodium acetate, 2mg BSA, with 0.01mg NaN3 as preservative.

**Immunogen**

Growth cone enriched plasma membrane fraction from E17 rat forebrain.

**Purification**

Ascites

**Cross Reactivity**

No cross reactivity with other proteins

Storage

**At -20°C for one year. After reconstitution, at 4°C for one month. It can also be aliquotted and stored frozen at -20°C for a longer time. Avoid repeated freezing and thawing.**

#### Sequence Similarities

Contains 2 fibronectin type-III domains.

### Anti-CD56/NCAM-1 Antibody - Protein Information

**Name** Ncam1 {ECO:0000312|RGD:67378}

**Synonyms** Ncam

#### Function

This protein is a cell adhesion molecule involved in neuron- neuron adhesion, neurite fasciculation, outgrowth of neurites, etc.

#### Cellular Location

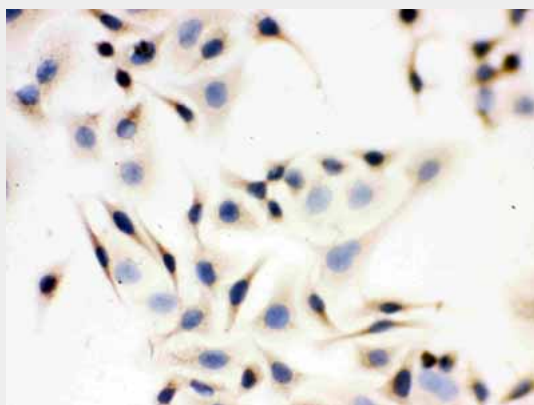
Cell membrane; Single-pass type I membrane protein

### Anti-CD56/NCAM-1 Antibody - Protocols

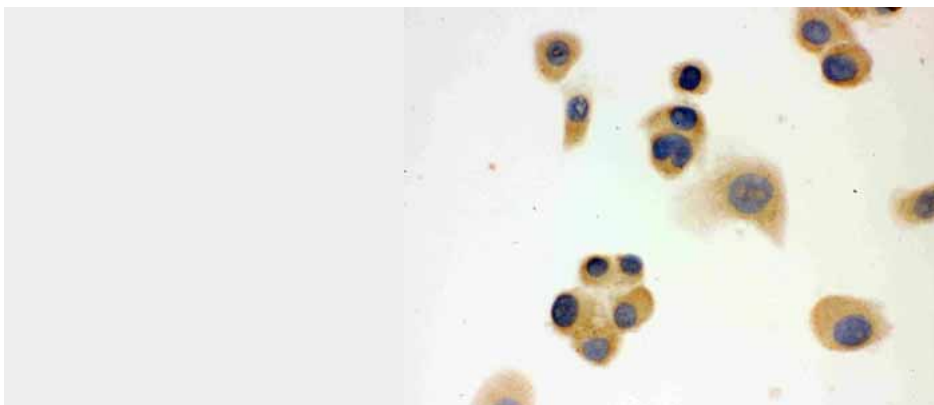
Provided below are standard protocols that you may find useful for product applications.

- [Western Blot](#)
- [Blocking Peptides](#)
- [Dot Blot](#)
- [Immunohistochemistry](#)
- [Immunofluorescence](#)
- [Immunoprecipitation](#)
- [Flow Cytometry](#)
- [Cell Culture](#)

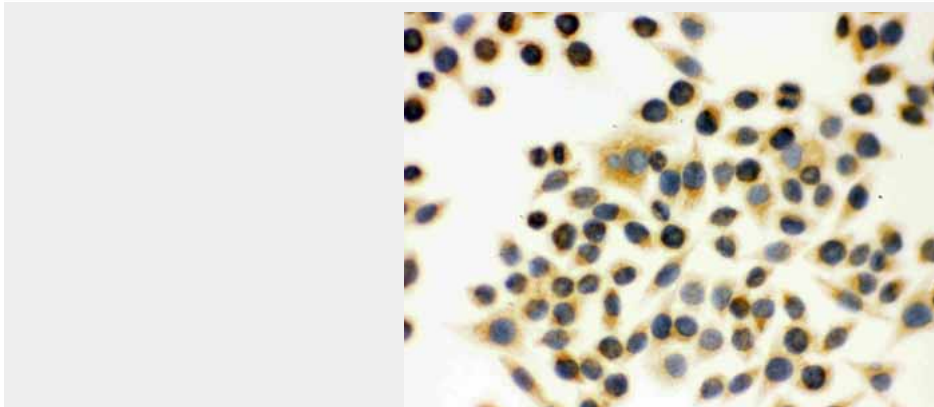
### Anti-CD56/NCAM-1 Antibody - Images



Anti- NCAM antibody, ABO10454, ICCICC: A549 Cell



Anti- NCAM antibody, ABO10454, ICCICC: NEURO-2?? Cell



Anti- NCAM antibody, ABO10454, ICCICC: SMMC-7721 Cell

#### **Anti-CD56/NCAM-1 Antibody - Background**

The neural cell adhesion molecule appears on early embryonic cells and is important in the formation of cell collectives and their boundaries at sites of morphogenesis. Later in development it is found on various differentiated tissues and is a major CAM mediating adhesion among neurons and between neurons and muscle. NCAM shares many features with immunoglobulins and is considered a member of the immunoglobulin superfamily. NCAM gene is mapped to 11q23.1.