

Anti-Paxillin Antibody (Monoclonal, PXC-10)
Catalog # ABO10465**Specification**

Anti-Paxillin Antibody (Monoclonal, PXC-10) - Product Information

Application	WB, ICC
Primary Accession	Q66H76
Host	Mouse
Isotype	Mouse IgG1
Reactivity	Human, Mouse, Rat
Clonality	Monoclonal
Format	Lyophilized

Description

Mouse IgG monoclonal antibody for Paxillin, paxillin (PXN) detection. Tested with WB, ICC in Human;mouse;rat;chicken. No cross reactivity with other proteins.

Reconstitution

Add 1ml of PBS buffer will yield a concentration of 100ug/ml.

Anti-Paxillin Antibody (Monoclonal, PXC-10) - Additional Information

Gene ID 360820

Other Names

Paxillin, Pxn

Calculated MW

64019 MW KDa

Application Details

Immunocytochemistry , 1 µg/ml, Human, mouse, rat, chicken, -
Western blot, 1-2 µg/ml, Human, mouse, rat, chicken

Subcellular Localization

Cytoplasm, cytoskeleton . Cell junction, focal adhesion . Cytoplasm, cell cortex . Colocalizes with integrins at the cell periphery. Colocalizes with PXN to membrane ruffles and the leading edge of migrating cells (By similarity). .

Protein Name

Paxillin

Contents

Mouse ascites fluid, 1.2% sodium acetate, 2mg BSA, with 0.01mg NaN3 as preservative.

Immunogen

C-terminal part of recombinant chicken paxillin(amino acids 305-559).

Purification

Ascites

Cross Reactivity

No cross reactivity with other proteins

Storage

At -20°C for one year. After reconstitution, at 4°C for one month. It can also be aliquotted and stored frozen at -20°C for a longer time. Avoid repeated freezing and thawing.

Sequence Similarities

Belongs to the paxillin family.

Anti-Paxillin Antibody (Monoclonal, PXC-10) - Protein Information

Name Pxn {ECO:0000312|RGD:1305759}

Function

Cytoskeletal protein involved in actin-membrane attachment at sites of cell adhesion to the extracellular matrix (focal adhesion). Recruits other proteins such as TRIM15 to focal adhesion.

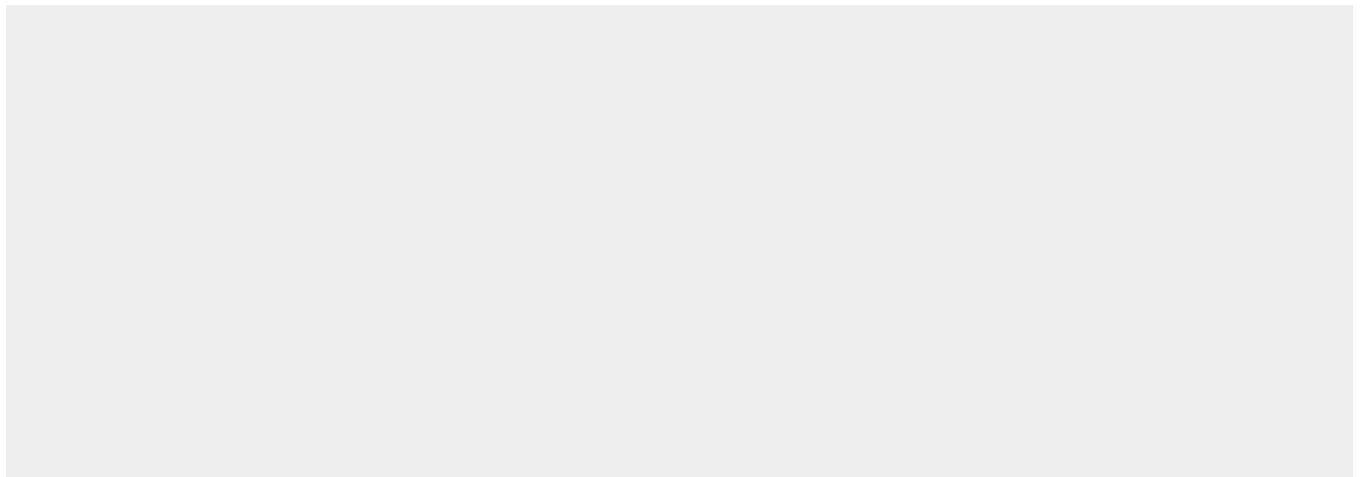
Cellular Location

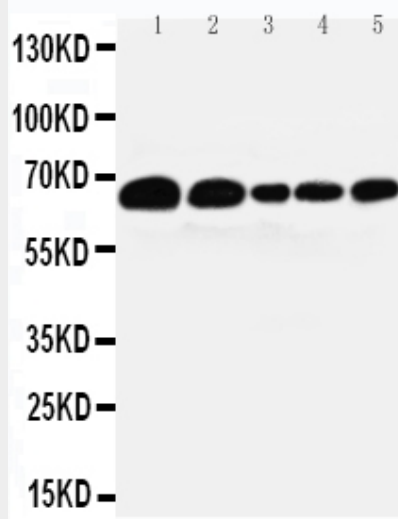
Cytoplasm, cytoskeleton {ECO:0000250|UniProtKB:P49023}. Cell junction, focal adhesion {ECO:0000250|UniProtKB:P49023}. Cytoplasm, cell cortex {ECO:0000250|UniProtKB:Q8VI36}. Note=Colocalizes with integrins at the cell periphery. Colocalizes with PXN to membrane ruffles and the leading edge of migrating cells (By similarity) {ECO:0000250|UniProtKB:P49023}

Anti-Paxillin Antibody (Monoclonal, PXC-10) - Protocols

Provided below are standard protocols that you may find useful for product applications.

- [Western Blot](#)
- [Blocking Peptides](#)
- [Dot Blot](#)
- [Immunohistochemistry](#)
- [Immunofluorescence](#)
- [Immunoprecipitation](#)
- [Flow Cytometry](#)
- [Cell Culture](#)

Anti-Paxillin Antibody (Monoclonal, PXC-10) - Images



Anti-Paxillin antibody (monoclonal), ABO10465, Western blotting
Lane 1: 293T Cell Lysate
Lane 2: HELA Cell Lysate
Lane 3: MCF-7 Cell Lysate
Lane 4: MM231 Cell Lysate
Lane 5: JURKAT Cell Lysate

Anti-Paxillin Antibody (Monoclonal, PXC-10) - Background

The paxillin gene can be alternatively spliced to include 1 of 2 alternative exons, generating beta and gamma isoforms. Paxillin is a 68-kDa focal adhesion protein that is phosphorylated on tyrosine residues in fibroblasts in response to transformation by v-src, treatment with platelet-derived growth factor, or cross-linking of integrins. The 68-kD protein(paxillin) is a cytoskeletal component that localizes to the focal adhesions at the ends of actin stress fibers in chicken embryo fibroblasts. It is also present in the focal adhesions of Madin-Darby bovine kidney(MDBK) epithelial cells but is absent, like talin, from the cell-cell adherens junctions of these cells.