

**Anti-Beta-HCG Antibody (Monoclonal, PC-2)**  
**Catalog # ABO10491****Specification**

---

**Anti-Beta-HCG Antibody (Monoclonal, PC-2) - Product Information**

Application	IHC
Primary Accession	<a href="#">P01233</a>
Host	Mouse
Isotype	Mouse IgG1
Reactivity	Human
Clonality	Monoclonal
Format	Lyophilized

**Description**

Mouse IgG monoclonal antibody for beta-HCG, chorionic gonadotropin, beta polypeptide (CGB) detection. Tested with IHC-P in Human. Cross-reactivities with LH, FSH and TSH are less than 0.3%.

**Reconstitution**

Add 1ml of PBS buffer will yield a concentration of 100ug/ml.

**Anti-Beta-HCG Antibody (Monoclonal, PC-2) - Additional Information****Calculated MW**

17739 MW KDa

**Application Details**

Immunohistochemistry(Paraffin-embedded Section), 2 µg/ml, Human, By Heat<br> <br>

**Subcellular Localization**

Secreted.

**Tissue Specificity**

Placenta.

**Protein Name**

Choriogonadotropin subunit beta

**Contents**

Mouse ascites fluid, 1.2% sodium acetate, 2mg BSA, with 0.01mg NaN<sub>3</sub> as preservative.

**Immunogen**

Purified human Chorionic Gonadotropin.

**Purification**

Ascites

**Cross Reactivity**

Cross-reactivities with LH, FSH and TSH are less than 0.3%.

**Storage**

**At -20 °C for one year. After r°Constitution,**

at 4°C for one month. It can also be aliquotted and stored frozen at -20°C for a longer time. Avoid repeated freezing and thawing.

#### Sequence Similarities

Belongs to the glycoprotein hormones subunit beta family.

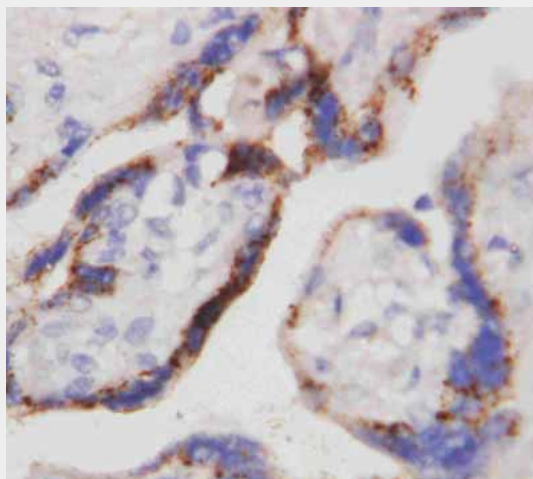
#### Anti-Beta-HCG Antibody (Monoclonal, PC-2) - Protein Information

#### Anti-Beta-HCG Antibody (Monoclonal, PC-2) - Protocols

Provided below are standard protocols that you may find useful for product applications.

- [Western Blot](#)
- [Blocking Peptides](#)
- [Dot Blot](#)
- [Immunohistochemistry](#)
- [Immunofluorescence](#)
- [Immunoprecipitation](#)
- [Flow Cytometry](#)
- [Cell Culture](#)

#### Anti-Beta-HCG Antibody (Monoclonal, PC-2) - Images



Anti-beta-HCG antibody (monoclonal), ABO10491, IHC(P)IHC(P): Human Placenta Tissue

#### Anti-Beta-HCG Antibody (Monoclonal, PC-2) - Background

beta-HCG (beta-Human Chorionic Gonadotropin), also termed as Chorionic Gonadotropin, Beta Chain (CGB). It is encoded by a multigene cluster composed of six homologous sequences. And in the family of beta-containing glycoprotein hormones, beta-HCG is unique in that it contains an extension of 29 amino acids at its COOH end. beta-HCG is mapped to 19q13.32 and expressed in trophoblast and various malignant tumors promotes cellular motility in vivo. beta-HCG has a novel function in uterine adaptation to early pregnancy as well as in tumor development and underline the importance of HCG as an as yet unrecognized angiogenic factor.