

**Anti-ATF6 Antibody**  
**Catalog # ABO10506****Specification**

---

**Anti-ATF6 Antibody - Product Information**

Application	WB
Primary Accession	<a href="#">P18850</a>
Host	Rabbit
Reactivity	Human, Mouse, Rat
Clonality	Polyclonal
Format	Lyophilized

**Description**

Rabbit IgG polyclonal antibody for Cyclic AMP-dependent transcription factor ATF-6 alpha(ATF6) detection. Tested with WB in Human;Mouse;Rat.

**Reconstitution**

Add 0.2ml of distilled water will yield a concentration of 500ug/ml.

**Anti-ATF6 Antibody - Additional Information**

**Gene ID** 22926

**Other Names**

Cyclic AMP-dependent transcription factor ATF-6 alpha, cAMP-dependent transcription factor ATF-6 alpha, Activating transcription factor 6 alpha, ATF6-alpha, Processed cyclic AMP-dependent transcription factor ATF-6 alpha, ATF6

**Calculated MW**

74585 MW KDa

**Application Details**

Western blot, 0.1-0.5 µg/ml, Human, Mouse, Rat<br>

**Subcellular Localization**

Endoplasmic reticulum membrane; Single-pass type II membrane protein.

**Tissue Specificity**

Ubiquitous.

**Protein Name**

Cyclic AMP-dependent transcription factor ATF-6 alpha

**Contents**

Each vial contains 5mg BSA, 0.9mg NaCl, 0.2mg Na<sub>2</sub>HPO<sub>4</sub>, 0.05mg Thimerosal, 0.05mg NaN<sub>3</sub>.

**Immunogen**

A synthetic peptide corresponding to a sequence at the C-terminus of human ATF6(599-614aa NINENVINGQDYEVMM), different from the related mouse and rat sequences by one amino acid.



**Purification**

Immunogen affinity purified.

**Cross Reactivity**

No cross reactivity with other proteins

**Storage**

**At -20°C for one year. After r°Constitution, at 4°C for one month. It°Can also be aliquotted and stored frozen at -20°C for a longer time.Avoid repeated freezing and thawing.**

**Sequence Similarities**

Belongs to the bZIP family. ATF subfamily.

**Anti-ATF6 Antibody - Protein Information****Name** ATF6**Function**

[Cyclic AMP-dependent transcription factor ATF-6 alpha]: Precursor of the transcription factor form (Processed cyclic AMP- dependent transcription factor ATF-6 alpha), which is embedded in the endoplasmic reticulum membrane (PubMed:<a href="http://www.uniprot.org/citations/10564271" target="\_blank">10564271</a>, PubMed:<a href="http://www.uniprot.org/citations/11158310" target="\_blank">11158310</a>, PubMed:<a href="http://www.uniprot.org/citations/11779464" target="\_blank">11779464</a>). Endoplasmic reticulum stress promotes processing of this form, releasing the transcription factor form that translocates into the nucleus, where it activates transcription of genes involved in the unfolded protein response (UPR) (PubMed:<a href="http://www.uniprot.org/citations/10564271" target="\_blank">10564271</a>, PubMed:<a href="http://www.uniprot.org/citations/11158310" target="\_blank">11158310</a>, PubMed:<a href="http://www.uniprot.org/citations/11779464" target="\_blank">11779464</a>).

**Cellular Location**

Endoplasmic reticulum membrane; Single-pass type II membrane protein. Golgi apparatus membrane; Single-pass type II membrane protein. Note=Translocates from the endoplasmic reticulum to the Golgi, where it is processed.

**Tissue Location**

Ubiquitous..

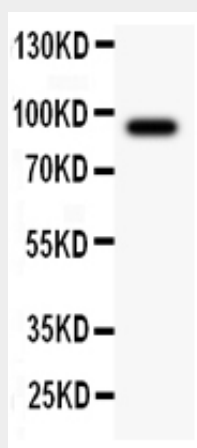
**Anti-ATF6 Antibody - Protocols**

Provided below are standard protocols that you may find useful for product applications.

- [Western Blot](#)
- [Blocking Peptides](#)
- [Dot Blot](#)
- [Immunohistochemistry](#)
- [Immunofluorescence](#)
- [Immunoprecipitation](#)
- [Flow Cytometry](#)
- [Cell Culture](#)

**Anti-ATF6 Antibody - Images**





Anti- ATF6 antibody, ABO10506, Western blotting All lanes: Anti ATF6 (ABO10506) at 0.5ug/ml WB: A549 Whole Cell Lysate at 40ug Predicted bind size: 75KD Observed bind size: 90KD

#### **Anti-ATF6 Antibody - Background**

ATF6, a member of the leucine zipper protein family, is an endoplasmic reticulum(ER) stress-regulated transmembrane transcription factor that activates the transcription of ER molecules. ATF6 gene is mapped to chromosome 1q23.3. ATF6 can constitutively induce the promoter of glucose-regulated protein(grp) genes through activation of the endoplasmic reticulum(ER) stress element(ERSE).