

Anti-BDNF Antibody
Catalog # ABO10509**Specification**

Anti-BDNF Antibody - Product Information

Application	WB
Primary Accession	P23560
Host	Rabbit
Reactivity	Human, Mouse, Rat
Clonality	Polyclonal
Format	Lyophilized

Description

Rabbit IgG polyclonal antibody for Brain-derived neurotrophic factor(BDNF) detection. Tested with WB in Human;Mouse;Rat.

Reconstitution

Add 0.2ml of distilled water will yield a concentration of 500ug/ml.

Anti-BDNF Antibody - Additional Information

Gene ID 627

Other Names

Brain-derived neurotrophic factor, BDNF, Abrineurin, BDNF

Calculated MW

27818 MW KDa

Application Details

Western blot, 0.1-0.5 µg/ml, Human, Mouse, Rat

Subcellular Localization

Secreted.

Tissue Specificity

Brain. Highly expressed in hippocampus, amygdala, cerebral cortex and cerebellum. Also expressed in heart, lung, skeletal muscle, testis, prostate and placenta. .

Protein Name

Brain-derived neurotrophic factor(BDNF)

Contents

Each vial contains 5mg BSA, 0.9mg NaCl, 0.2mg Na₂HPO₄, 0.05mg Thimerosal, 0.05mg NaN₃.

Immunogen

A synthetic peptide corresponding to a sequence at the N-terminal of human BDNF(129-148aa HSDPARRGELSVCDISEWV), identical to the related rat and mouse sequences.

Purification

Immunogen affinity purified.

Cross Reactivity

No cross reactivity with other proteins

Storage

At -20°C for one year. After reconstitution, at 4°C for one month. It can also be aliquotted and stored frozen at -20°C for a longer time. Avoid repeated freezing and thawing.

Sequence Similarities

Belongs to the NGF-beta family.

Anti-BDNF Antibody - Protein Information

Name BDNF {ECO:0000303|PubMed:28397838, ECO:0000312|HGNC:HGNC:1033}

Function

Important signaling molecule that activates signaling cascades downstream of NTRK2 (PubMed:11152678). During development, promotes the survival and differentiation of selected neuronal populations of the peripheral and central nervous systems. Participates in axonal growth, pathfinding and in the modulation of dendritic growth and morphology. Major regulator of synaptic transmission and plasticity at adult synapses in many regions of the CNS. The versatility of BDNF is emphasized by its contribution to a range of adaptive neuronal responses including long-term potentiation (LTP), long-term depression (LTD), certain forms of short-term synaptic plasticity, as well as homeostatic regulation of intrinsic neuronal excitability.

Cellular Location

Secreted

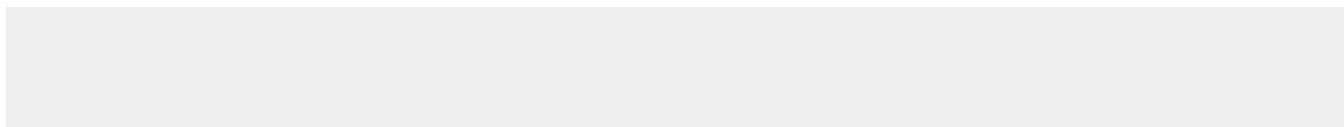
Tissue Location

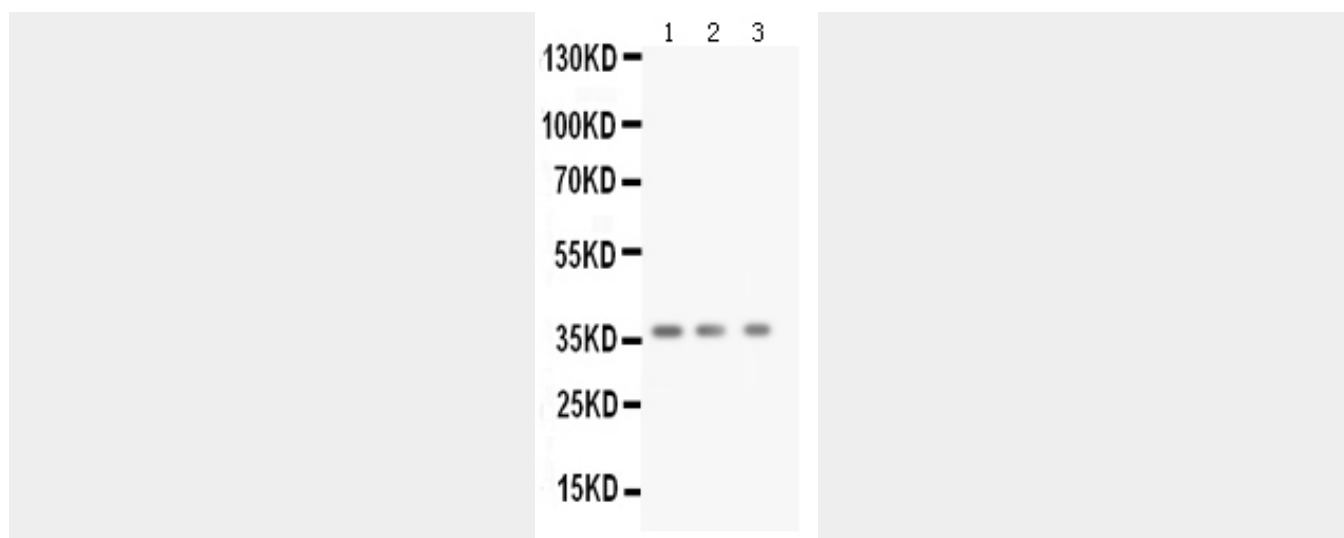
Detected in blood plasma and in saliva (at protein level) (PubMed:11152678, PubMed:19467646). Brain. Highly expressed in hippocampus, amygdala, cerebral cortex and cerebellum. Also expressed in heart, lung, skeletal muscle, testis, prostate and placenta

Anti-BDNF Antibody - Protocols

Provided below are standard protocols that you may find useful for product applications.

- [Western Blot](#)
- [Blocking Peptides](#)
- [Dot Blot](#)
- [Immunohistochemistry](#)
- [Immunofluorescence](#)
- [Immunoprecipitation](#)
- [Flow Cytometry](#)
- [Cell Culture](#)

Anti-BDNF Antibody - Images



Anti-BDNF antibody, ABO10509, Western blotting All lanes: Anti BDNF (ABO10509) at 0.5ug/ml Lane 1: Rat Brain Tissue Lysate at 50ug Lane 2: Mouse Brain Tissue Lysate at 50ug Lane 3: MCF-7 Whole Cell Lysate at 40ug Predicted bind size: 28KD Observed bind size: 37KD

Anti-BDNF Antibody - Background

Brain derived neurotrophic factor (BDNF) is a member of the neurotrophin family of growth factors that includes NGF, NT3, and NT4. BDNF is a prosurvival factor induced by cortical neurons that is necessary for survival of striatal neurons in the brain. BDNF is expressed within peripheral ganglia and is not restricted to neuronal target fields. BDNF has been purified and shown to reduce the amount of naturally occurring neuronal cell death in portions of the peripheral nervous system.