

Anti-Calretinin Antibody
Catalog # ABO10510**Specification**

Anti-Calretinin Antibody - Product Information

Application	WB, IHC-P
Primary Accession	P22676
Host	Rabbit
Reactivity	Human, Mouse, Rat
Clonality	Polyclonal
Format	Liquid

Description

Rabbit IgG polyclonal antibody for Calretinin(CALB2) detection. Tested with WB, IHC-P in Human;Mouse;Rat.

Anti-Calretinin Antibody - Additional Information

Gene ID 794

Other Names

Calretinin, CR, 29 kDa calbindin, CALB2, CAB29

Calculated MW

31540 MW KDa

Application Details

Immunohistochemistry(Paraffin-embedded Section), 0.5-1 µg/ml, Human, Mouse, Rat, By Heat
Western blot, 0.1-0.5 µg/ml, Human, Mouse, Rat

Tissue Specificity

Brain.

Protein Name

Calretinin(CR)

Contents

Each vial contains 50% glycerol, 0.9mg NaCl, 0.2mg Na2HPO4. Carrier free (No BSA) form available in stock. If you want this antibody carrier free please specify "Carrier Free" or "No BSA" in your order note. "

Immunogen

A synthetic peptide corresponding to a sequence at the N-terminus of human Calretinin(4-18aa PQQPPYLHLAELTA), identical to the related rat sequence.

Purification

Immunogen affinity purified.

Cross Reactivity

No cross reactivity with other proteins

Storage

At -20°C for one year, at 4°C for one month. Avoid repeated freezing and thawing.

Sequence Similarities

Belongs to the calbindin family.

Anti-Calretinin Antibody - Protein Information

Name CALB2 ([HGNC:1435](#))

Synonyms CAB29

Function

Calcium-binding protein involved in calcium homeostasis and signal transduction. It plays a critical role in buffering intracellular calcium levels and modulating calcium-dependent signaling pathways (PubMed:2001709). Predominantly expressed in specific neuronal populations, influences synaptic plasticity and neuronal excitability, contributing to learning and memory (By similarity). During embryonic development, it facilitates neuronal differentiation and maturation (By similarity).

Cellular Location

Synapse {ECO:0000250|UniProtKB:Q08331}. Cell projection, dendrite {ECO:0000250|UniProtKB:Q08331}. Note=Located in dendrioles, small dendrites that makes up a brush structure found as the terminal specialization of a dendrite of a unipolar brush cell {ECO:0000250|UniProtKB:Q08331}

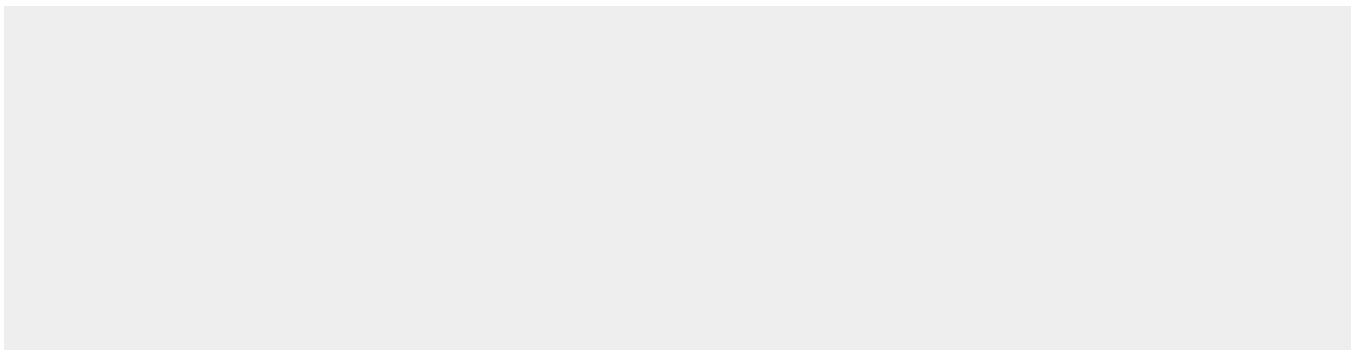
Tissue Location


Brain.

Anti-Calretinin Antibody - Protocols

Provided below are standard protocols that you may find useful for product applications.

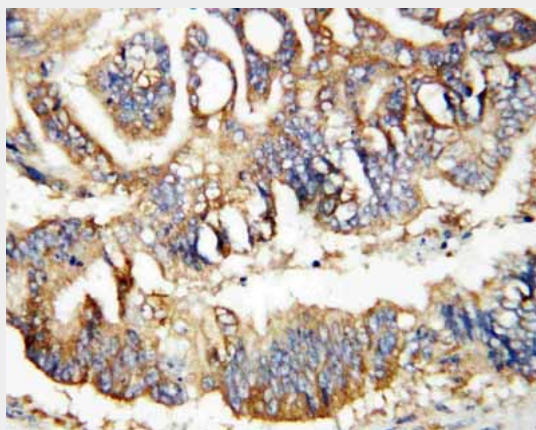
- [Western Blot](#)
- [Blocking Peptides](#)
- [Dot Blot](#)
- [Immunohistochemistry](#)
- [Immunofluorescence](#)
- [Immunoprecipitation](#)
- [Flow Cytometry](#)
- [Cell Culture](#)

Anti-Calretinin Antibody - Images



58KD -
40KD -
29KD -
20KD -
14KD -
8KD -

Anti-Calretinin antibody, ABO10510, Western blottingWB: HELA Cell Lysate



Anti-Calretinin antibody, ABO10510, IHC(P)IHC(P): Human Rectal Cancer Tissue

Anti-Calretinin Antibody - Background

Calbindin is a calcium-binding protein belonging to the troponin C superfamily. Calretinin is expressed in central and peripheral nervous system and in many normal and pathological tissues. The rat and human calretinin exhibit 98% sequence homology and 91% homology to many other species. Two calcium binding proteins, calbindin and calretinin, have been reported to be expressed in abundance in Purkinje cells and other cell types in the cerebellum.