

**Anti-CCR5 Antibody**  
Catalog # ABO10512**Specification****Anti-CCR5 Antibody - Product Information**

Application	<b>WB</b>
Primary Accession	<a href="#">P51681</a>
Host	<b>Rabbit</b>
Reactivity	<b>Human</b>
Clonality	<b>Polyclonal</b>
Format	<b>Lyophilized</b>

**Description**

Rabbit IgG polyclonal antibody for C-C chemokine receptor type 5(CCR5) detection. Tested with WB in Human.

**Reconstitution**

Add 0.2ml of distilled water will yield a concentration of 500ug/ml.

**Anti-CCR5 Antibody - Additional Information**

**Gene ID** 1234

**Other Names**

C-C chemokine receptor type 5, C-C CKR-5, CC-CKR-5, CCR-5, CCR5, CHEMR13, HIV-1 fusion coreceptor, CD195, CCR5, CMKBR5

**Calculated MW**

40524 MW KDa

**Application Details**

Western blot, 0.1-0.5 µg/ml, Human<br>

**Subcellular Localization**

Cell membrane ; Multi-pass membrane protein .

**Tissue Specificity**

Highly expressed in spleen, thymus, in the myeloid cell line THP-1, in the promyeloblastic cell line KG-1a and on CD4+ and CD8+ T-cells. Medium levels in peripheral blood leukocytes and in small intestine. Low levels in ovary and lung. .

**Protein Name**

C-C chemokine receptor type 5

**Contents**

Each vial contains 5mg BSA, 0.9mg NaCl, 0.2mg Na<sub>2</sub>HPO<sub>4</sub>, 0.05mg Thimerosal, 0.05mg NaN<sub>3</sub>.

**Immunogen**

A synthetic peptide corresponding to a sequence in the middle region of human CCR5(179-197aa SSHFPYSQYQFWKNFQTLK).

**Purification**

Immunogen affinity purified.

**Cross Reactivity**

No cross reactivity with other proteins

**Storage**

At -20°C for one year. After r°Constitution, at 4°C for one month. It°Can also be aliquotted and stored frozen at -20°C for a longer time.Avoid repeated freezing and thawing.

**Sequence Similarities**

Belongs to the G-protein coupled receptor 1 family.

**Anti-CCR5 Antibody - Protein Information**

**Name** CCR5 ([HGNC:1606](#))

**Synonyms** CMKBR5

**Function**

Receptor for a number of inflammatory CC-chemokines including CCL3/MIP-1-alpha, CCL4/MIP-1-beta and RANTES and subsequently transduces a signal by increasing the intracellular calcium ion level. May play a role in the control of granulocytic lineage proliferation or differentiation. Participates in T-lymphocyte migration to the infection site by acting as a chemotactic receptor (PubMed:<a href="http://www.uniprot.org/citations/30713770" target="\_blank">30713770</a>).

**Cellular Location**

Cell membrane; Multi-pass membrane protein

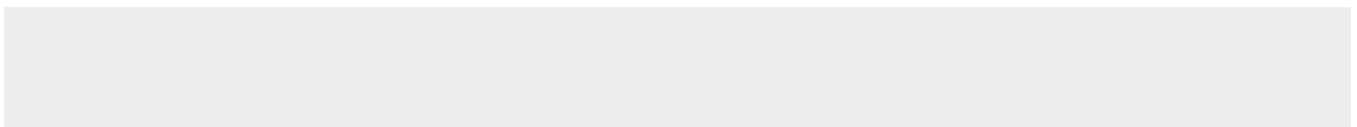
**Tissue Location**

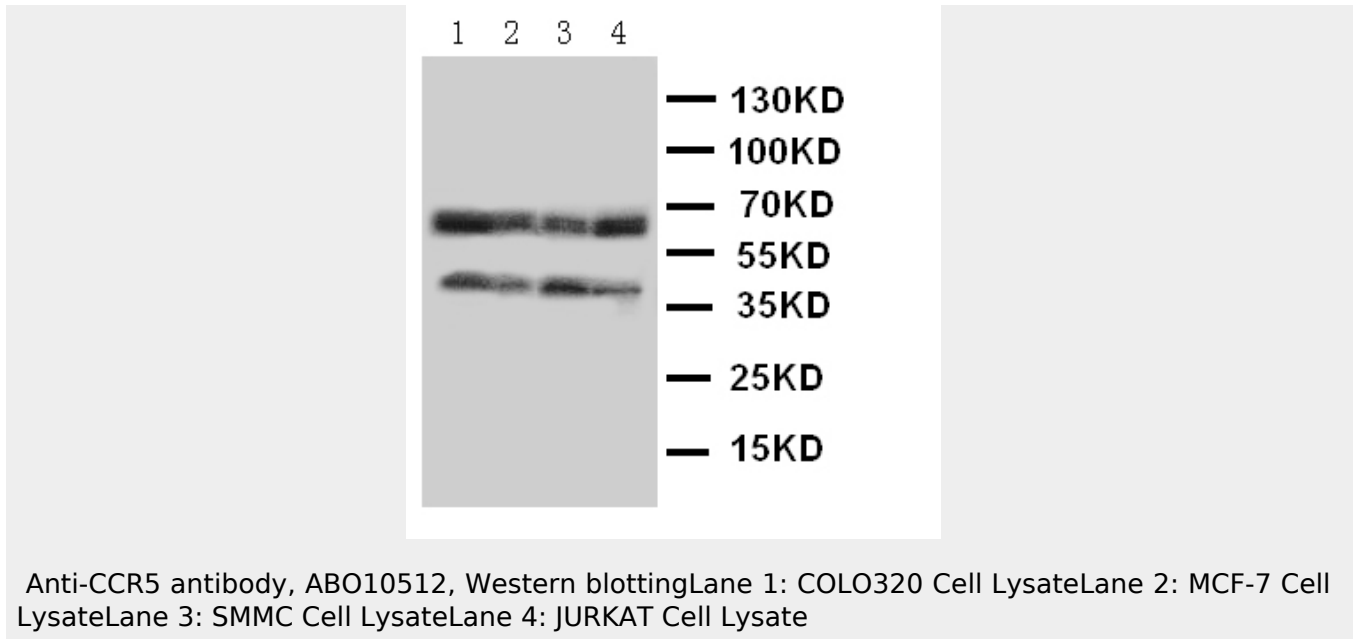
Highly expressed in spleen, thymus, in the myeloid cell line THP-1, in the promyeloblastic cell line KG-1a and on CD4+ and CD8+ T-cells. Medium levels in peripheral blood leukocytes and in small intestine. Low levels in ovary and lung.

**Anti-CCR5 Antibody - Protocols**

Provided below are standard protocols that you may find useful for product applications.

- [Western Blot](#)
- [Blocking Peptides](#)
- [Dot Blot](#)
- [Immunohistochemistry](#)
- [Immunofluorescence](#)
- [Immunoprecipitation](#)
- [Flow Cytometry](#)
- [Cell Culture](#)

**Anti-CCR5 Antibody - Images**



### Anti-CCR5 Antibody - Background

Human CC chemokine receptor 5 (CCR5), which is 17.5 kb from the CMKBR2 gene, encodes a 352-amino acid protein with a calculated molecular mass of 40,600 Da. It is organized into four exons and two introns. Human CCR5 is a co-receptor for macrophage-tropic strains of human immunodeficiency virus (HIV)-1 and is expressed by bone-marrow-derived cells. CCR5 is expressed on neurons, astrocytes, and microglia in the central nervous system, and on epithelium, endothelium, vascular smooth muscle and fibroblasts in other tissues. Functionally, CCR5 mediates the activation of cells by the chemokines macrophage inflammatory protein-1alpha, macrophage inflammatory protein-1beta, and RANTES, and serves as a fusion cofactor for macrophage-tropic strains of human immunodeficiency virus type 1.