

**Anti-CD40/TNFRSF5 Antibody**  
**Catalog # ABO10516****Specification**

---

**Anti-CD40/TNFRSF5 Antibody - Product Information**

Application	WB
Primary Accession	<a href="#">P25942</a>
Host	Rabbit
Reactivity	Human
Clonality	Polyclonal
Format	Lyophilized

**Description**

Rabbit IgG polyclonal antibody for Tumor necrosis factor receptor superfamily member 5(CD40) detection. Tested with WB in Human.

**Reconstitution**

Add 0.2ml of distilled water will yield a concentration of 500ug/ml.

**Anti-CD40/TNFRSF5 Antibody - Additional Information**

**Gene ID** 958

**Other Names**

Tumor necrosis factor receptor superfamily member 5, B-cell surface antigen CD40, Bp50, CD40L receptor, CDw40, CD40, CD40, TNFRSF5

**Calculated MW**

30619 MW KDa

**Application Details**

Western blot, 0.1-0.5 µg/ml, Human<br>

**Subcellular Localization**

Isoform I: Cell membrane; Single-pass type I membrane protein.

**Tissue Specificity**

B-cells and in primary carcinomas.

**Protein Name**

Tumor necrosis factor receptor superfamily member 5

**Contents**

Each vial contains 5mg BSA, 0.9mg NaCl, 0.2mg Na<sub>2</sub>HPO<sub>4</sub>, 0.05mg Thimerosal, 0.05mg NaN<sub>3</sub>.

**Immunogen**

A synthetic peptide corresponding to a sequence at the N-terminus of human CD40(20-37aa, PEPPTACREKQYLINSQC).

**Purification**

Immunogen affinity purified.

**Cross Reactivity**

No cross reactivity with other proteins

**Storage**

**At -20°C for one year. After reconstitution, at 4°C for one month. It can also be aliquotted and stored frozen at -20°C for a longer time. Avoid repeated freezing and thawing.**

**Sequence Similarities**

Contains 4 TNFR-Cys repeats.

**Anti-CD40/TNFRSF5 Antibody - Protein Information**

**Name** CD40

**Synonyms** TNFRSF5

**Function**

Receptor for TNFSF5/CD40LG (PubMed: [31331973](http://www.uniprot.org/citations/31331973)). Transduces TRAF6- and MAP3K8-mediated signals that activate ERK in macrophages and B cells, leading to induction of immunoglobulin secretion (By similarity).

**Cellular Location**

[Isoform I]: Cell membrane; Single-pass type I membrane protein

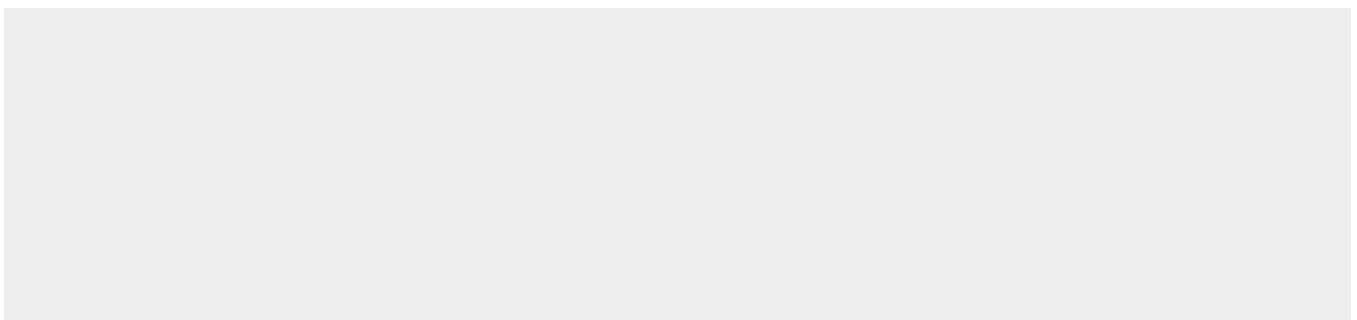
**Tissue Location**

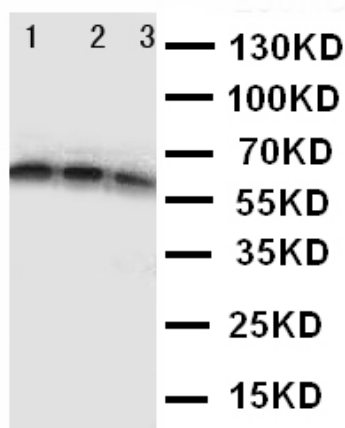
B-cells and in primary carcinomas.

**Anti-CD40/TNFRSF5 Antibody - Protocols**

Provided below are standard protocols that you may find useful for product applications.

- [Western Blot](#)
- [Blocking Peptides](#)
- [Dot Blot](#)
- [Immunohistochemistry](#)
- [Immunofluorescence](#)
- [Immunoprecipitation](#)
- [Flow Cytometry](#)
- [Cell Culture](#)

**Anti-CD40/TNFRSF5 Antibody - Images**



Anti-CD40 antibody, ABO10516, Western blotting  
Lane 1: Recombinant Human CD40 Protein 10ng  
Lane 2: Recombinant Human CD40 Protein 5ng  
Lane 3: Recombinant Human CD40 Protein 2.5ng

#### Anti-CD40/TNFRSF5 Antibody - Background

CD40 is a cell surface receptor that is expressed on the surface of all mature B cells and also expressed on monocytes, dendritic cells, and thymic epithelium. CD40 is a member of the tumor necrosis factor(TNF) receptor superfamily and is the receptor for CD40 ligand. CD40 ligand(CD40L, CD154, gp39, and TRAM) belongs to the TNF gene family and is expressed more widely than CD40 predominantly on activated CD4+ T cells. Activation of CD40 has also been shown to inhibit the growth of certain B cell lymphomas and to induce the death of transformed cells of mesenchymal or epithelial origin.