

**Anti-CXCR2 Antibody**  
**Catalog # ABO10522****Specification**

---

**Anti-CXCR2 Antibody - Product Information**

Application	WB
Primary Accession	<a href="#">P25025</a>
Host	Rabbit
Reactivity	Human, Mouse, Rat
Clonality	Polyclonal
Format	Lyophilized

**Description**

Rabbit IgG polyclonal antibody for C-X-C chemokine receptor type 2(CXCR2) detection. Tested with WB in Human;Mouse;Rat.

**Reconstitution**

Add 0.2ml of distilled water will yield a concentration of 500ug/ml.

**Anti-CXCR2 Antibody - Additional Information**

**Gene ID** 3579

**Other Names**

C-X-C chemokine receptor type 2, CXC-R2, CXCR-2, CDw128b, GRO/MGSA receptor, High affinity interleukin-8 receptor B, IL-8R B, IL-8 receptor type 2, CD182, CXCR2, IL8RB

**Calculated MW**

40759 MW KDa

**Application Details**

Western blot, 0.1-0.5 µg/ml, Human, Mouse, Rat<br>

**Subcellular Localization**

Cell membrane; Multi-pass membrane protein.

**Protein Name**

C-X-C chemokine receptor type 2(CXC-R2/CXCR-2)

**Contents**

Each vial contains 5mg BSA, 0.9mg NaCl, 0.2mg Na<sub>2</sub>HPO<sub>4</sub>, 0.05mg Thimerosal, 0.05mg NaN<sub>3</sub>.

**Immunogen**

A synthetic peptide corresponding to a sequence in the middle region of human CXCR2(196-212aa CYEDMGNNNTANWRMLLR), different from the related mouse sequence by six amino acids.

**Purification**

Immunogen affinity purified.

**Cross Reactivity**

No cross reactivity with other proteins

Storage

**At -20°C for one year. After r°Constitution, at 4°C for one month. It°Can also be aliquotted and stored frozen at -20°C for a longer time.Avoid repeated freezing and thawing.**

#### **Sequence Similarities**

Belongs to the G-protein coupled receptor 1 family.

### **Anti-CXCR2 Antibody - Protein Information**

**Name** CXCR2

**Synonyms** IL8RB

#### **Function**

Receptor for interleukin-8 which is a powerful neutrophil chemotactic factor (PubMed:<a href="http://www.uniprot.org/citations/1891716" target="\_blank">1891716</a>). Binding of IL-8 to the receptor causes activation of neutrophils. This response is mediated via a G- protein that activates a phosphatidylinositol-calcium second messenger system (PubMed:<a href="http://www.uniprot.org/citations/8662698" target="\_blank">8662698</a>). Binds to IL-8 with high affinity. Also binds with high affinity to CXCL3, GRO/MGSA and NAP-2.

#### **Cellular Location**

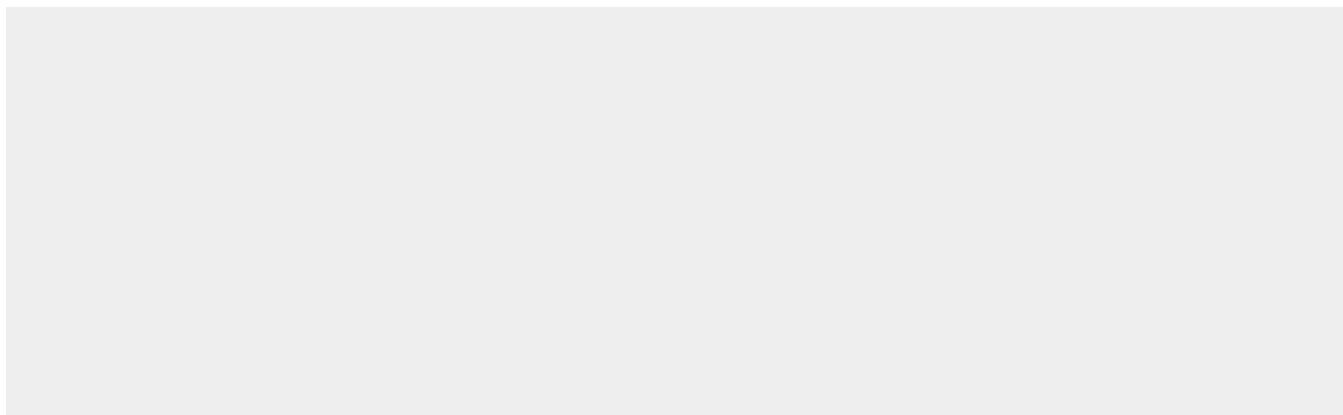
Cell membrane; Multi-pass membrane protein.

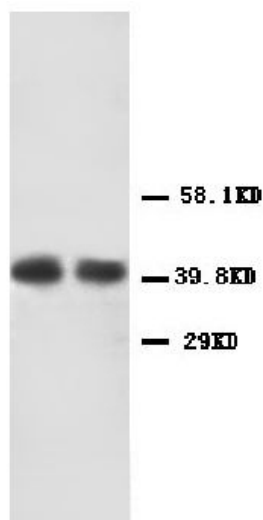
### **Anti-CXCR2 Antibody - Protocols**

Provided below are standard protocols that you may find useful for product applications.

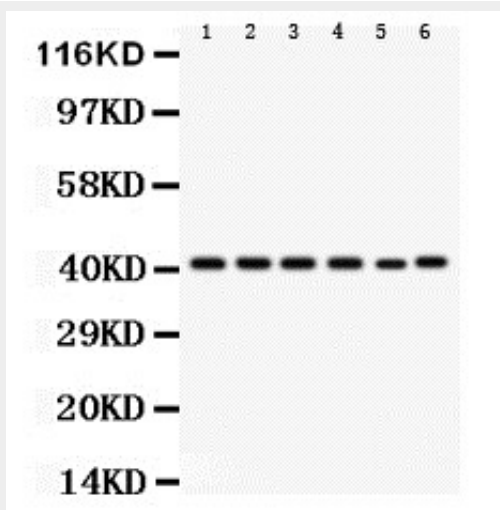
- [Western Blot](#)
- [Blocking Peptides](#)
- [Dot Blot](#)
- [Immunohistochemistry](#)
- [Immunofluorescence](#)
- [Immunoprecipitation](#)
- [Flow Cytometry](#)
- [Cell Culture](#)

### **Anti-CXCR2 Antibody - Images**





Anti-CXCR2 antibody, ABO10522, Western blotting  
Lane 1: Human Rectal Cancer Tissue Lysate  
Lane 2: Human Rectal Cancer Tissue Lysate



Anti- CXCR2 antibody, ABO10522, Western blotting  
All lanes: Anti CXCR2(ABO10522) at 0.5ug/ml  
Lane 1: Rat Spleen Tissue Lysate at 50ug  
Lane 2: Rat Kidney Tissue Lysate at 50ug  
Lane 3: Rat Brain Tissue Lysate at 50ug  
Lane 4: Mouse Testis Tissue Lysate at 50ug  
Lane 5: HEPA Whole Cell Lysate at 40ug  
Lane 6: Mouse Brain Tissue Lysate at 50ug  
Predicted bind size: 41KD  
Observed bind size: 41KD

### Anti-CXCR2 Antibody - Background

CXCR2 is a receptor for Interleukin 8, which is a powerful neutrophil chemotactic factor. It is a member of the GPCR family(subfamily, chemokine). Binding of IL8 to the receptor causes activation of neutrophils. This response is mediated via a G-protein that activate a phosphatidylinositol-calcium second messenger system. This receptor binds to IL8 with a high affinity and to GRO/MGSA and NAP2 also with a high affinity. It has been reported to be expressed in a wide variety of tissues. ESTs have been isolated from human placenta and thymus libraries.