

Anti-CD56/NCAM-1 Antibody
Catalog # ABO10541**Specification**

Anti-CD56/NCAM-1 Antibody - Product Information

Application	WB, IHC-P
Primary Accession	P13591
Host	Rabbit
Reactivity	Human, Mouse, Rat
Clonality	Polyclonal
Format	Lyophilized

Description

Rabbit IgG polyclonal antibody for Neural cell adhesion molecule 1(NCAM1) detection. Tested with WB, IHC-P in Human;Mouse;Rat.

Reconstitution

Add 0.2ml of distilled water will yield a concentration of 500ug/ml.

Anti-CD56/NCAM-1 Antibody - Additional Information

Gene ID 4684

Other Names

Neural cell adhesion molecule 1, N-CAM-1, NCAM-1, CD56, NCAM1, NCAM

Calculated MW

94574 MW KDa

Application Details

Immunohistochemistry(Paraffin-embedded Section), 0.5-1 µg/ml, Rat, Human, Mouse, By Heat
Western blot, 0.1-0.5 µg/ml, Human, Mouse, Rat

Subcellular Localization

Isoform 1: Cell membrane; Single-pass type I membrane protein.

Protein Name

Neural cell adhesion molecule 1(N-CAM-1/NCAM-1)

Contents

Each vial contains 5mg BSA, 0.9mg NaCl, 0.2mg Na₂HPO₄, 0.05mg Thimerosal, 0.05mg NaN₃.

Immunogen

A synthetic peptide corresponding to a sequence at the C-terminus of human NCAM(657-673aa DHVMLKSLDWNAEYEVY), identical to the related rat and mouse sequences.

Purification

Immunogen affinity purified.

Cross Reactivity

No cross reactivity with other proteins

Storage

At -20°C for one year. After reconstitution, at 4°C for one month. It can also be aliquotted and stored frozen at -20°C for a longer time. Avoid repeated freezing and thawing.

Sequence Similarities

Contains 2 fibronectin type-III domains.

Anti-CD56/NCAM-1 Antibody - Protein Information

Name NCAM1 ([HGNC:7656](#))

Synonyms NCAM

Function

This protein is a cell adhesion molecule involved in neuron- neuron adhesion, neurite fasciculation, outgrowth of neurites, etc. (Microbial infection) Acts as a receptor for Zika virus.

Cellular Location

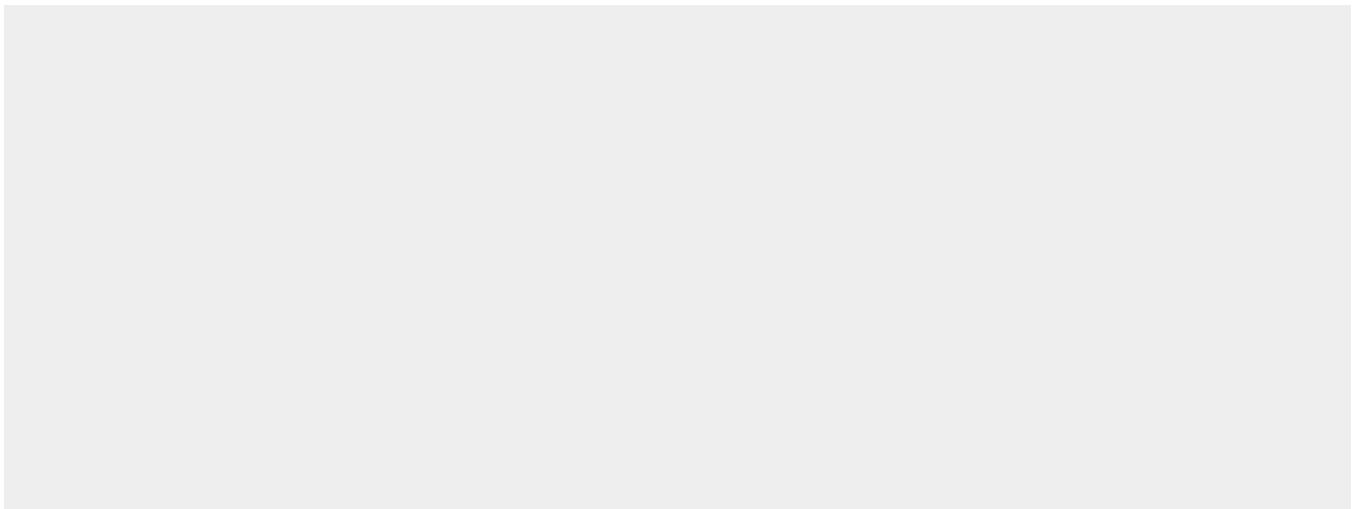
[Isoform 1]: Cell membrane; Single-pass type I membrane protein [Isoform 3]: Cell membrane; Lipid-anchor, GPI- anchor [Isoform 5]: Secreted.

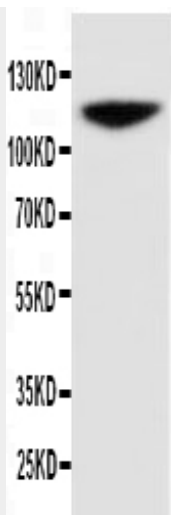
Anti-CD56/NCAM-1 Antibody - Protocols

Provided below are standard protocols that you may find useful for product applications.

- [Western Blot](#)
- [Blocking Peptides](#)
- [Dot Blot](#)
- [Immunohistochemistry](#)
- [Immunofluorescence](#)
- [Immunoprecipitation](#)
- [Flow Cytometry](#)
- [Cell Culture](#)

Anti-CD56/NCAM-1 Antibody - Images





Anti-NCAM antibody, ABO10541, Western blottingWB: Rat Brain Tissue Lysate

Anti-CD56/NCAM-1 Antibody - Background

NCAM is a membrane-bound glycoprotein that plays a role in cell-cell and cell-matrix adhesion through both its homophilic and heterophilic binding activity. The neural cell adhesion molecule appears on early embryonic cells and is important in the formation of cell collectives and their boundaries at sites of morphogenesis. Later in development it is found on various differentiated tissues and is a major CAM mediating adhesion among neurons and between neurons and muscle. NCAM gene is mapped to 11q23. The neural cell adhesion molecule (NCAM) can influence a number of diverse intercellular events, including junctional communication, the association of axons with pathways and targets, and signals that alter levels of neurotransmitter enzymes.