

Anti-NMDAR2B Antibody
Catalog # ABO10545**Specification**

Anti-NMDAR2B Antibody - Product Information

Application	WB
Primary Accession	Q13224
Host	Rabbit
Reactivity	Human, Mouse, Rat
Clonality	Polyclonal
Format	Lyophilized

Description

Rabbit IgG polyclonal antibody for Glutamate receptor ionotropic, NMDA 2B(GRIN2B) detection. Tested with WB in Human;Mouse;Rat.

Reconstitution

Add 0.2ml of distilled water will yield a concentration of 500ug/ml.

Anti-NMDAR2B Antibody - Additional Information

Gene ID 2904

Other Names

Glutamate receptor ionotropic, NMDA 2B, GluN2B, Glutamate [NMDA] receptor subunit epsilon-2, N-methyl D-aspartate receptor subtype 2B, NMDAR2B, NR2B, N-methyl-D-aspartate receptor subunit 3, NR3, hNR3, GRIN2B, NMDAR2B

Calculated MW

166367 MW KDa

Application Details

Western blot, 0.1-0.5 µg/ml, Mouse, Rat, Human

Subcellular Localization

Cell membrane; Multi-pass membrane protein. Cell junction, synapse, postsynaptic cell membrane; Multi-pass membrane protein.

Tissue Specificity

Primarily found in the fronto-parieto-temporal cortex and hippocampus pyramidal cells, lower expression in the basal ganglia. .

Protein Name

Glutamate receptor ionotropic, NMDA 2B

Contents

Each vial contains 5mg BSA, 0.9mg NaCl, 0.2mg Na₂HPO₄, 0.05mg Thimerosal, 0.05mg NaN₃.

Immunogen

A synthetic peptide corresponding to a sequence at the C-terminus of human

NMDAR2B(1131-1146aa, DFYLDQFRTKENSHPHW), identical to the related mouse and rat sequence.

Purification

Immunogen affinity purified.

Cross Reactivity

No cross reactivity with other proteins

Storage

At -20°C for one year. After reconstitution, at 4°C for one month. It can also be aliquotted and stored frozen at -20°C for a longer time. Avoid repeated freezing and thawing.

Anti-NMDAR2B Antibody - Protein Information

Name GRIN2B

Synonyms NMDAR2B

Function

Component of NMDA receptor complexes that function as heterotetrameric, ligand-gated ion channels with high calcium permeability and voltage-dependent sensitivity to magnesium. Channel activation requires binding of the neurotransmitter glutamate to the epsilon subunit, glycine binding to the zeta subunit, plus membrane depolarization to eliminate channel inhibition by Mg(2+) (PubMed: [8768735](http://www.uniprot.org/citations/8768735), PubMed: [26919761](http://www.uniprot.org/citations/26919761), PubMed: [26875626](http://www.uniprot.org/citations/26875626), PubMed: [28126851](http://www.uniprot.org/citations/28126851)). Sensitivity to glutamate and channel kinetics depend on the subunit composition (PubMed: [8768735](http://www.uniprot.org/citations/8768735), PubMed: [26875626](http://www.uniprot.org/citations/26875626)). In concert with DAPK1 at extrasynaptic sites, acts as a central mediator for stroke damage. Its phosphorylation at Ser-1303 by DAPK1 enhances synaptic NMDA receptor channel activity inducing injurious Ca²⁺ influx through them, resulting in an irreversible neuronal death. Contributes to neural pattern formation in the developing brain. Plays a role in long-term depression (LTD) of hippocampus membrane currents and in synaptic plasticity (By similarity).

Cellular Location

Cell membrane; Multi-pass membrane protein {ECO:0000250|UniProtKB:Q00960}. Postsynaptic cell membrane {ECO:0000250|UniProtKB:Q00960}; Multi-pass membrane protein {ECO:0000250|UniProtKB:Q00960}. Late endosome {ECO:0000250|UniProtKB:Q01097}. Lysosome {ECO:0000250|UniProtKB:Q01097}. Cytoplasm, cytoskeleton {ECO:0000250|UniProtKB:Q01097}. Note=Co-localizes with the motor protein KIF17 along microtubules. {ECO:0000250|UniProtKB:Q01097}

Tissue Location

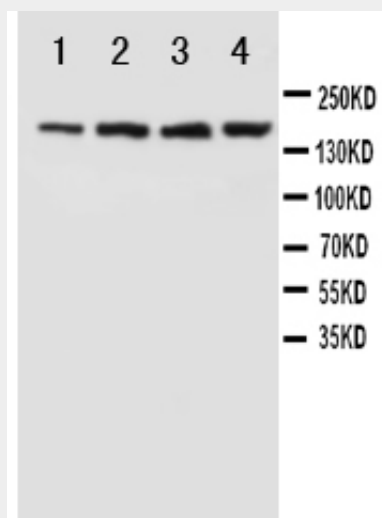
Primarily found in the fronto-parieto-temporal cortex and hippocampus pyramidal cells, lower expression in the basal ganglia.

Anti-NMDAR2B Antibody - Protocols

Provided below are standard protocols that you may find useful for product applications.

- [Western Blot](#)
- [Blocking Peptides](#)
- [Dot Blot](#)
- [Immunohistochemistry](#)
- [Immunofluorescence](#)
- [Immunoprecipitation](#)
- [Flow Cytometry](#)
- [Cell Culture](#)

Anti-NMDAR2B Antibody - Images



Anti-NMDAR2B antibody, ABO10545, Western blotting
Lane 1: Rat Brain Tissue Lysate
Lane 2: Rat Brain Tissue Lysate
Lane 3: Mouse Brain Tissue Lysate
Lane 4: Mouse Brain Tissue Lysate

Anti-NMDAR2B Antibody - Background

The N-methyl-D-aspartate receptor 2B, also names as GRIN2B. The sequence of the predicted 1,484-amino acid human protein is 98% and 96% identical to the sequences of the rat and mouse Nmdar2b proteins, respectively. Nmdar2B gene is located on mouse chromosome 6 between Rho and Ly49 centromerically and Glb telomerically. Mapping of the human NMDAR2B receptor subunit gene (GRIN2B) to chromosome 12p12 overexpression of NMDA receptor 2B (NR2B) in the forebrains of transgenic mice leads to enhanced activation of NMDA receptors, facilitating synaptic potentiation in response to stimulation at 10-100 Hz.