

**Anti-TIMP-4 Antibody**  
**Catalog # ABO10562****Specification**

---

**Anti-TIMP-4 Antibody - Product Information**

Application	WB, E
Primary Accession	<a href="#">Q99727</a>
Host	Rabbit
Reactivity	Human
Clonality	Polyclonal
Format	Lyophilized

**Description**

Rabbit IgG polyclonal antibody for Metalloproteinase inhibitor 4(TIMP4) detection. Tested with WB, ELISA in Human.

**Reconstitution**

Add 0.2ml of distilled water will yield a concentration of 500ug/ml.

**Anti-TIMP-4 Antibody - Additional Information**

**Gene ID** 7079

**Other Names**

Metalloproteinase inhibitor 4, Tissue inhibitor of metalloproteinases 4, TIMP-4, TIMP4

**Calculated MW**

25503 MW KDa

**Application Details**

Western blot, 0.1-0.5 µg/ml, Human, -<br>ELISA , 0.1-0.5 µg/ml, Human<br>

**Subcellular Localization**

Secreted.

**Tissue Specificity**

Abundant in heart and present at low levels in many other tissues.

**Protein Name**

Metalloproteinase inhibitor 4

**Contents**

Each vial contains 5mg BSA, 0.9mg NaCl, 0.2mg Na<sub>2</sub>HPO<sub>4</sub>, 0.05mg Thimerosal, 0.05mg NaN<sub>3</sub>.

**Immunogen**

A synthetic peptide corresponding to a sequence at the C-terminus of human TIMP4(209-224aa RGHPLRKEFVDIVQP).

**Purification**

Immunogen affinity purified.

**Cross Reactivity**

No cross reactivity with other proteins

**Storage**

**At -20°C for one year. After reconstitution, at 4°C for one month. It can also be aliquotted and stored frozen at -20°C for a longer time. Avoid repeated freezing and thawing.**

**Sequence Similarities**

Belongs to the protease inhibitor I35 (TIMP) family.

**Anti-TIMP-4 Antibody - Protein Information**

**Name** TIMP4

**Function**

Complexes with metalloproteinases (such as collagenases) and irreversibly inactivates them by binding to their catalytic zinc cofactor. Known to act on MMP-1, MMP-2, MMP-3, MMP-7 and MMP-9.

**Cellular Location**

Secreted.

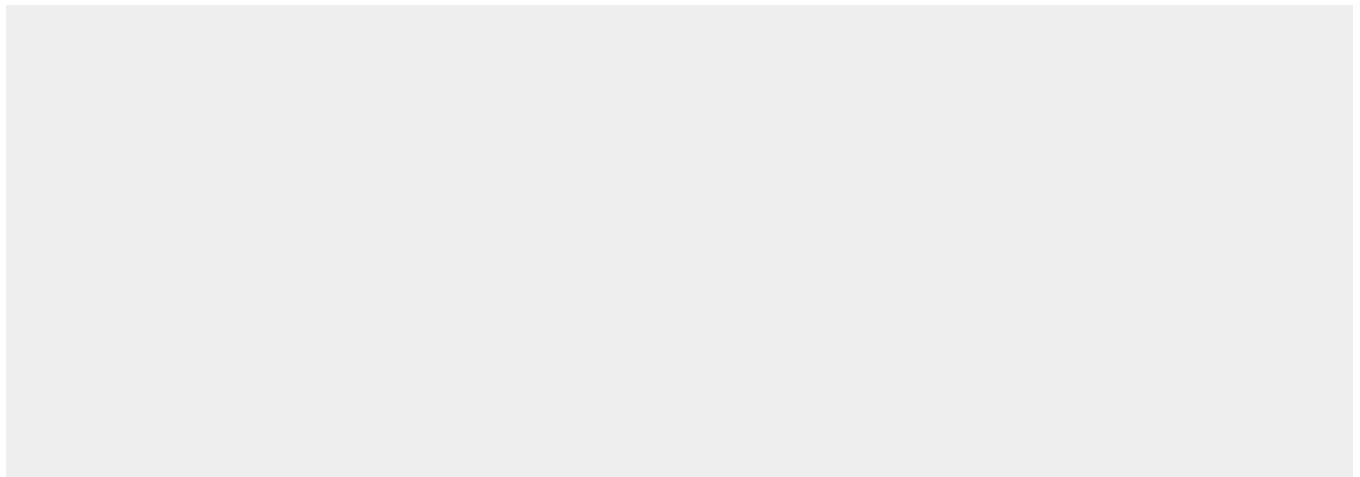
**Tissue Location**

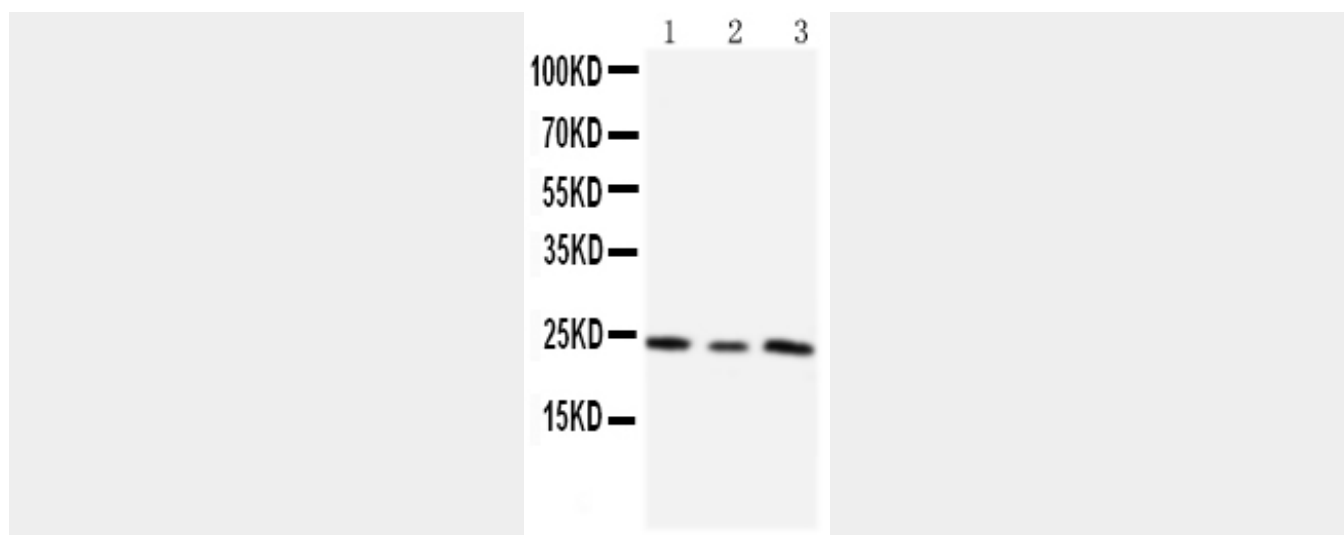
Abundant in heart and present at low levels in many other tissues

**Anti-TIMP-4 Antibody - Protocols**

Provided below are standard protocols that you may find useful for product applications.

- [Western Blot](#)
- [Blocking Peptides](#)
- [Dot Blot](#)
- [Immunohistochemistry](#)
- [Immunofluorescence](#)
- [Immunoprecipitation](#)
- [Flow Cytometry](#)
- [Cell Culture](#)

**Anti-TIMP-4 Antibody - Images**



Anti-TIMP4 antibody, ABO10562, Western blotting  
Lane 1: HT1080 Cell Lysate  
Lane 2: HELA Cell Lysate  
Lane 3: SMMC Cell Lysate

#### **Anti-TIMP-4 Antibody - Background**

Metalloproteinase inhibitor 4 is an enzyme that in humans is encoded by the TIMP4 gene. And this gene is mapped to chromosome 3p25. This gene belongs to the TIMP gene family. The proteins encoded by this gene family are inhibitors of the matrix metalloproteinases, a group of peptidases involved in degradation of the extracellular matrix. The secreted, netrin domain-containing protein encoded by this gene is involved in regulation of platelet aggregation and recruitment and may play role in hormonal regulation and endometrial tissue remodeling.