

Anti-Cytochrome C Antibody
Catalog # ABO10575**Specification**

Anti-Cytochrome C Antibody - Product Information

Application	IHC, ICC, WB
Primary Accession	P99999
Host	Rabbit
Reactivity	Human, Mouse, Rat
Clonality	Polyclonal
Format	Lyophilized

Description

Rabbit IgG polyclonal antibody for Cytochrome c(CYCS) detection. Tested with WB, IHC-P, IHC-F, ICC in Human;Mouse;Rat.

Reconstitution

Add 0.2ml of distilled water will yield a concentration of 500ug/ml.

Anti-Cytochrome C Antibody - Additional Information

Gene ID 54205

Other Names

Cytochrome c, CYCS, CYC

Calculated MW

11749 MW KDa

Application Details

Immunocytochemistry , 0.5-1 µg/ml, Human, -
Immunohistochemistry(Frozen Section), 0.5-1 µg/ml, Human, Rat, Mouse
Immunohistochemistry(Paraffin-embedded Section), 0.5-1 µg/ml, Human, Rat, Mouse, By Heat
Western blot, 0.1-0.5 µg/ml, Human, Mouse, Rat

Subcellular Localization

Mitochondrion intermembrane space. Loosely associated with the inner membrane.

Protein Name

Cytochrome c

Contents

Each vial contains 5mg BSA, 0.9mg NaCl, 0.2mg Na₂HPO₄, 0.05mg Thimerosal, 0.05mg NaN₃.

Immunogen

A synthetic peptide corresponding to a sequence at the C-terminus of human Cytochrome C(91-105 aa ERADLIAYLK^KATNE), identical to the related mouse and rat sequences.

Purification

Immunogen affinity purified.

Cross Reactivity

No cross reactivity with other proteins

Storage

At -20°C for one year. After reconstitution, at 4°C for one month. It can also be aliquotted and stored frozen at -20°C for a longer time. Avoid repeated freezing and thawing.

Sequence Similarities

Belongs to the cytochrome c family.

Anti-Cytochrome C Antibody - Protein Information

Name CYCS

Synonyms CYC

Function

Electron carrier protein. The oxidized form of the cytochrome c heme group can accept an electron from the heme group of the cytochrome c1 subunit of cytochrome reductase. Cytochrome c then transfers this electron to the cytochrome oxidase complex, the final protein carrier in the mitochondrial electron-transport chain.

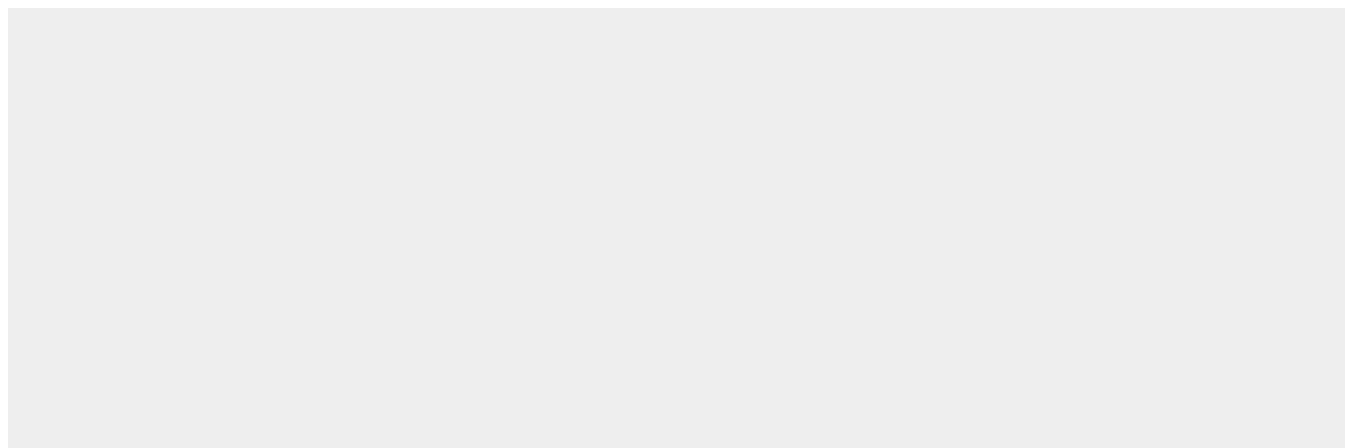
Cellular Location

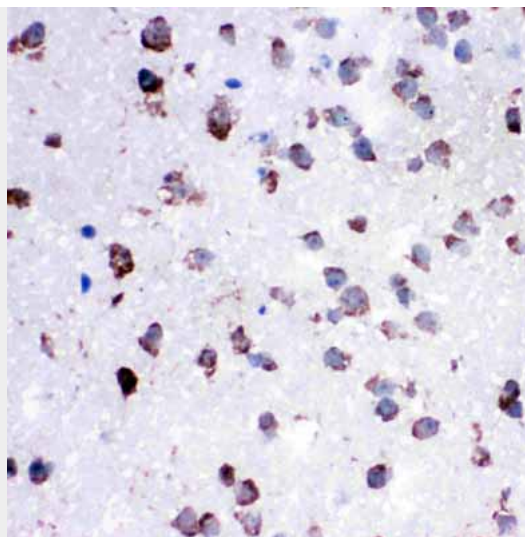
Mitochondrion intermembrane space. Note=Loosely associated with the inner membrane

Anti-Cytochrome C Antibody - Protocols

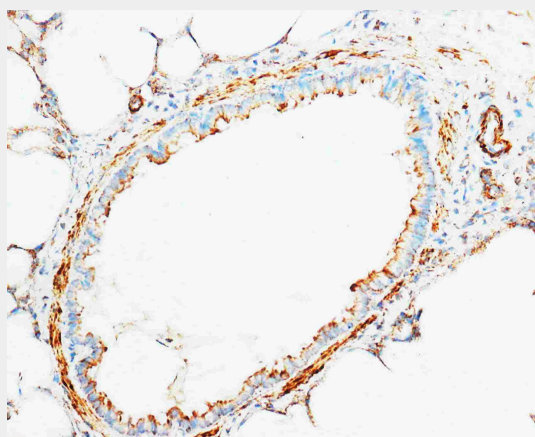
Provided below are standard protocols that you may find useful for product applications.

- [Western Blot](#)
- [Blocking Peptides](#)
- [Dot Blot](#)
- [Immunohistochemistry](#)
- [Immunofluorescence](#)
- [Immunoprecipitation](#)
- [Flow Cytometry](#)
- [Cell Culture](#)

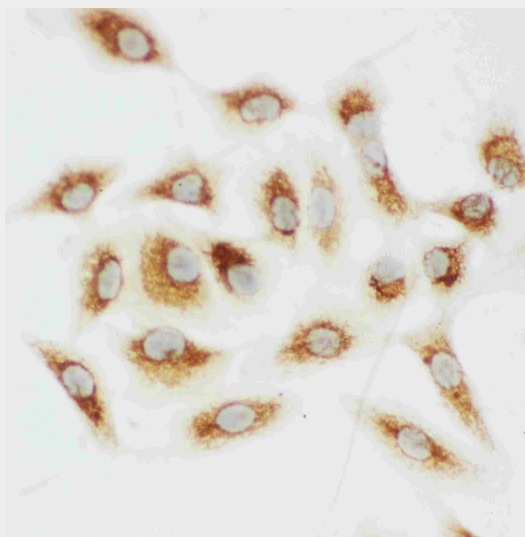
Anti-Cytochrome C Antibody - Images



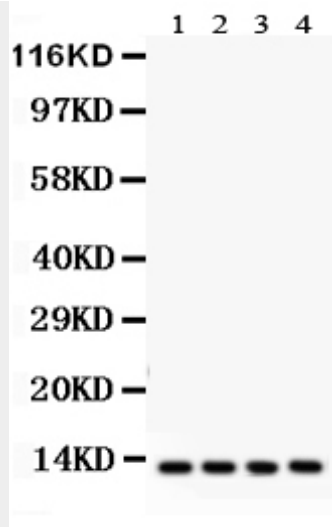
Anti-Cytochrome C antibody, ABO10575, IHC(P)IHC(P): Rat Lung Tissue



Anti-Cytochrome C antibody, ABO10575, IHC(F)IHC(F): Rat Brain Tissue



Anti-Cytochrome C antibody, ABO10575, ICCICC: A549 Cell



Anti-Cytochrome C antibody, ABO10575, Western blotting All lanes: Anti Cytochrome C (ABO10575) at 0.5ug/ml Lane 1: Rat Liver Tissue Lysate at 50ug Lane 2: HELA Whole Cell Lysate at 40ug Lane 3: MCF-7 Whole Cell Lysate at 40ug Lane 4: HEPA Whole Cell Lysate at 40ug Predicted bind size: 12KD Observed bind size: 12KD

Anti-Cytochrome C Antibody - Background

Cytochrome C is located in the mitochondria of all aerobic cells and is involved in the electron transport system. Human cytochrome c has 104 amino acid residues and a molecular weight of 11,458 and is mapped to 7p15.2. Cytochrome c released from mitochondria has been proposed to be an essential component of an apoptotic pathway responsive to DNA damage and other forms of cell stress. And it has a role in different apoptotic signaling cascades.