

Anti-OPCML Antibody
Catalog # ABO10585**Specification**

Anti-OPCML Antibody - Product Information

Application	WB, IHC-P
Primary Accession	Q14982
Host	Rabbit
Reactivity	Human, Mouse, Rat
Clonality	Polyclonal
Format	Lyophilized

Description

Rabbit IgG polyclonal antibody for Opioid-binding protein/cell adhesion molecule(OPCML) detection. Tested with WB, IHC-P in Human;Mouse;Rat.

Reconstitution

Add 0.2ml of distilled water will yield a concentration of 500ug/ml.

Anti-OPCML Antibody - Additional Information

Gene ID 4978

Other Names

Opioid-binding protein/cell adhesion molecule, OBCAM, OPCML, Opioid-binding cell adhesion molecule, IGLON family member 1, OPCML, IGLON1, OBCAM

Calculated MW

38008 MW KDa

Application Details

Immunohistochemistry(Paraffin-embedded Section), 0.5-1 µg/ml, Human, Rat, Mouse, By Heat
Western blot, 0.1-0.5 µg/ml, Human, Rat, Mouse

Subcellular Localization

Cell membrane ; Lipid-anchor, GPI-anchor .

Protein Name

Opioid-binding protein/cell adhesion molecule(OBCAM/OPCML/Opioid-binding cell adhesion molecule)

Contents

Each vial contains 5mg BSA, 0.9mg NaCl, 0.2mg Na₂HPO₄, 0.05mg Thimerosal, 0.05mg NaN₃.

Immunogen

A synthetic peptide corresponding to a sequence at the C-terminus of human OPCML(294-312aa YTCVATNKLGNITLY), identical to the related rat and mouse sequences.

Purification

Immunogen affinity purified.

Cross Reactivity

No cross reactivity with other proteins

Storage

At -20°C for one year. After reconstitution, at 4°C for one month. It can also be aliquotted and stored frozen at -20°C for a longer time. Avoid repeated freezing and thawing.

Sequence Similarities

Belongs to the immunoglobulin superfamily. IgLON family.

Anti-OPCML Antibody - Protein Information

Name OPCML

Synonyms IGLON1, OBCAM

Function

Binds opioids in the presence of acidic lipids; probably involved in cell contact.

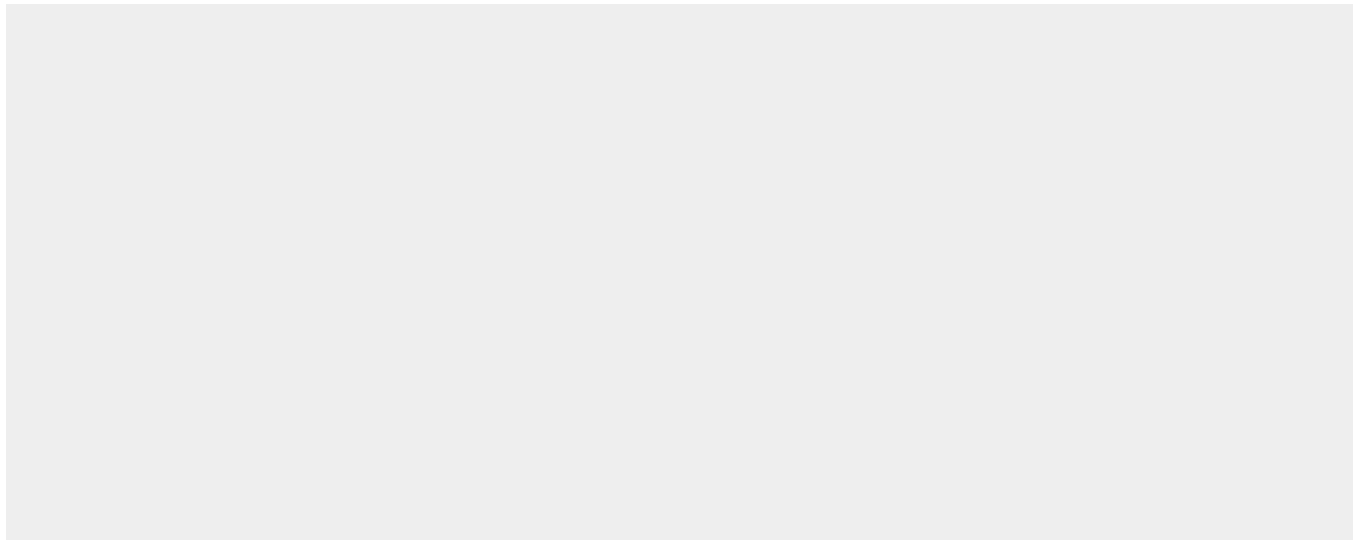
Cellular Location

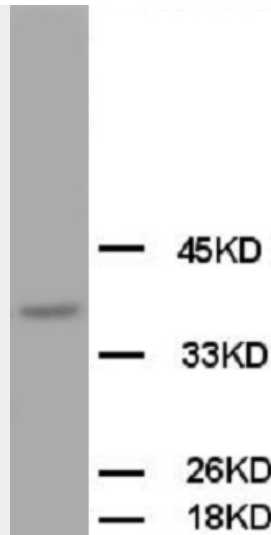
Cell membrane; Lipid-anchor, GPI- anchor

Anti-OPCML Antibody - Protocols

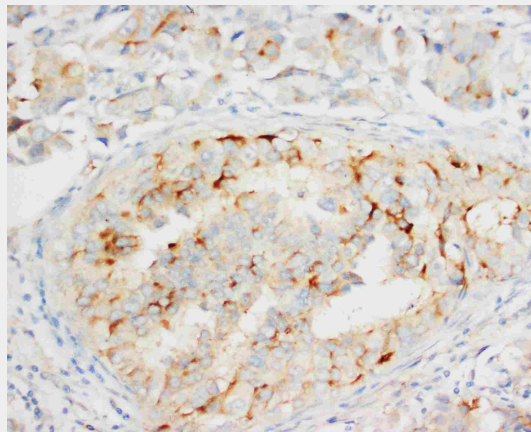
Provided below are standard protocols that you may find useful for product applications.

- [Western Blot](#)
- [Blocking Peptides](#)
- [Dot Blot](#)
- [Immunohistochemistry](#)
- [Immunofluorescence](#)
- [Immunoprecipitation](#)
- [Flow Cytometry](#)
- [Cell Culture](#)

Anti-OPCML Antibody - Images



Anti-OPCML antibody, ABO10585, Western blottingWB: Rat Brain Tissue Lysate



Anti-OPCML antibody, ABO10585, IHC(P)IHC(P): Human Mammary Cancer Tissue

Anti-OPCML Antibody - Background

Opioid-binding protein/cell adhesion molecule-like(OPCML),(also called opioid-binding cell adhesion molecule(OBCAM). OPCML is a member of the IgLON family of immunoglobulin(Ig) domain-containing glycosylphosphatidylinositol(GPI)-anchored cell adhesion molecules, as an excellent candidate for the 11q25 ovarian cancer TSG in EOC. The OPCML gene comprises 7 exons, spans approximately 600 kb, and is transcribed from telomere to centromere . And due to the lack of transmembrane domains necessary for signal transduction, it is improbable that OBCAM acts independently as an opioid receptor; more likely, it plays an important accessory role in opioid receptor function.